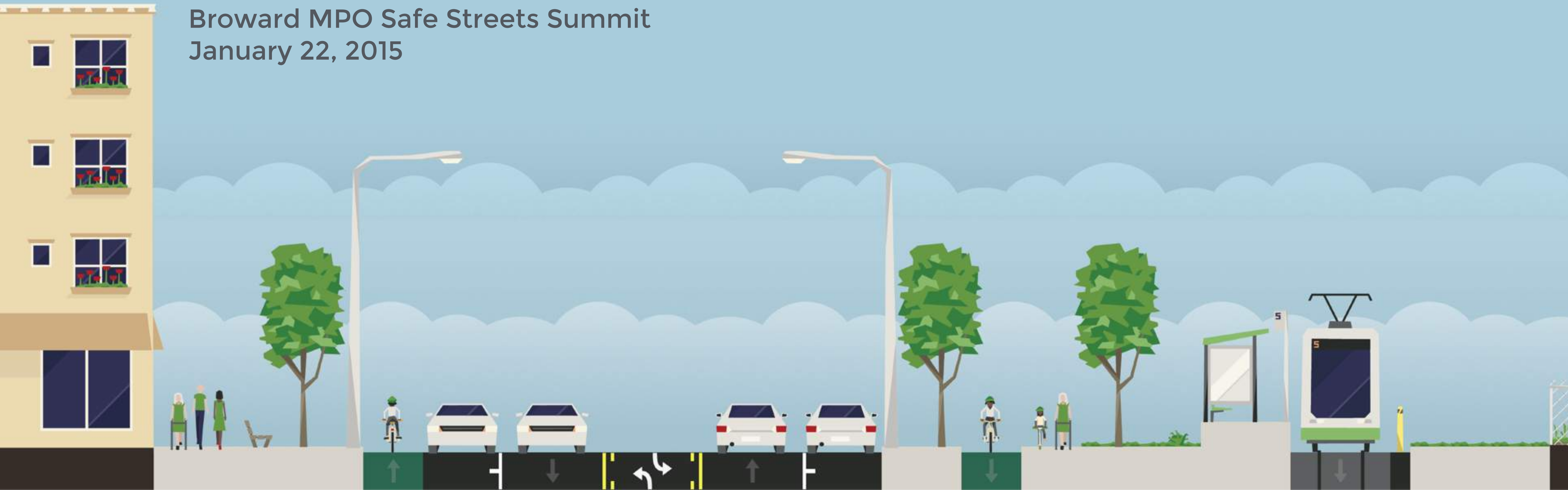


# Civic technology and community engagement

Luring stakeholders into complete streets

Broward MPO Safe Streets Summit  
January 22, 2015



# About me

“I don’t know why people ever, ever try to stop nerds from doing things. It’s really the most incredible waste of time.”

Jerry Holkins



DAYTONA BEACH FLORIDA

DAYTONA

DAYTONA



# Development FastPass<sup>Alpha</sup>

- 1 Determine business
- 2 Find a location
- 3 Review & next steps

## Zoning map

Zones in which you're qualified to be in will be shown on the map to the left. Select individual parcels to learn more.

**R50** Rental & Leasing

Based on the information we've collected so far, these zones are most likely approved for your business.

**DCP-0** Downtown Centennial Plan

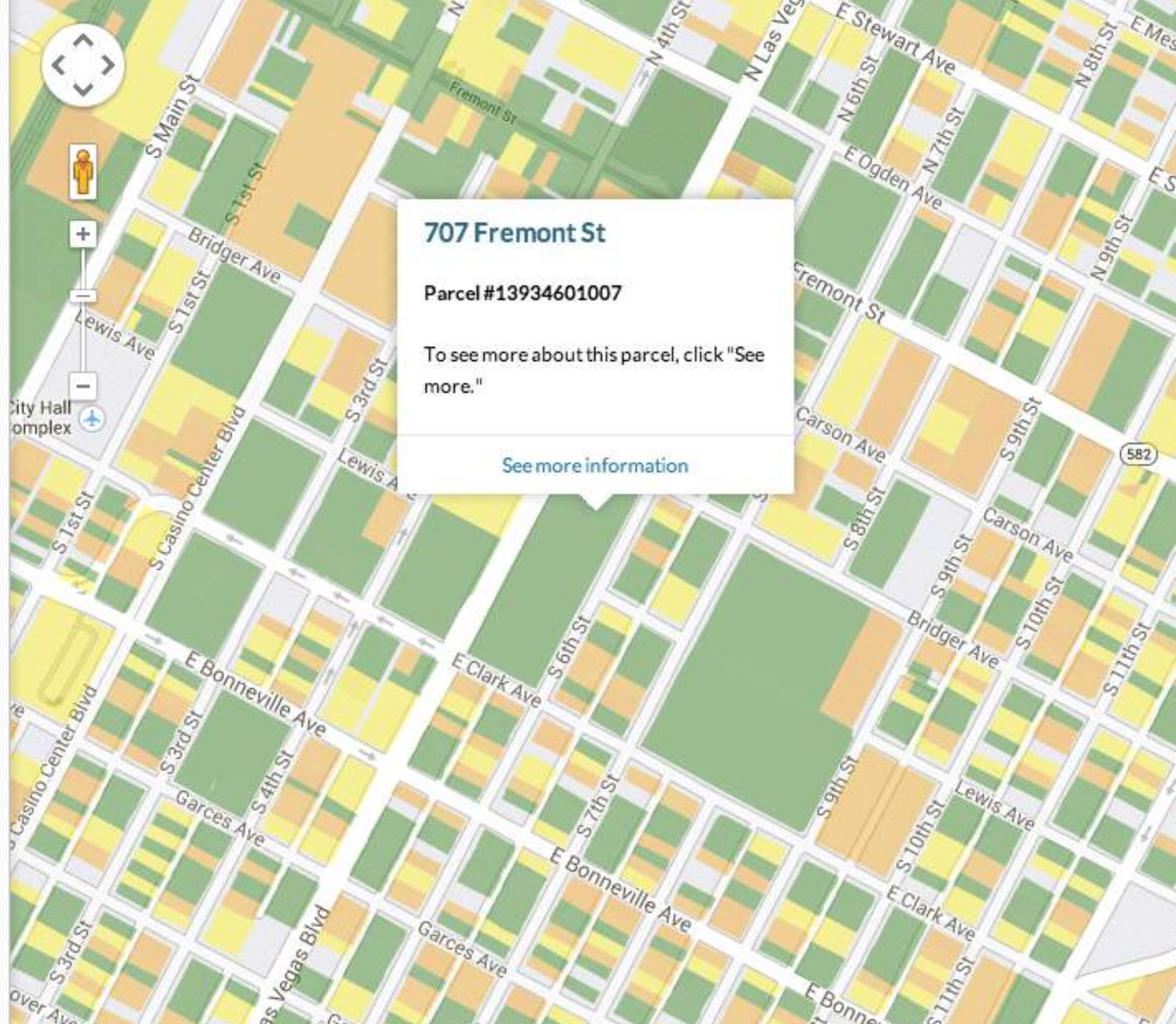
These zones may require additional conditions for approval.

**CM-1** Light Industrial

**CM-2** Medium Industrial

← Back

Select a parcel on the map to continue →



## Las Vegas Development Fastpass

<http://www.codeforamerica.org/apps/development-fastpass/>

# AM I IN LAS VEGAS?

Because the city boundaries are a  
lot weirder than you think.

USE MY CURRENT LOCATION

OR

495 S. Las Vegas Blvd

TELL ME

What's this site about?

**Am I In Las Vegas?**


<http://amiinlasvegas.com/>

9:56 PM 100%

STREETMIX · Help ▾ · Contact ▾

Sign in · New street · My streets · Share ▾

# By The Beach

40' width ▾ · by  MSoslow · Aug 14, 2013

Element	Width
Sidewalk	6'
Sidewalk with a tree	4'
Drive lane	9'
Drive lane	9'
Bike lane	6'
Bike rack	6'

Undo Redo

 16th & M (northbound) 3  MIN WALK

S4	Silver Spring Station Northbound	5 <sup>6</sup> <sub>21</sub> MINUTES
S2	Silver Spring Station Northbound	7 <sup>8</sup> <sub>27</sub> MINUTES

 16th & M (southbound) 3  MIN WALK

S4	Franklin Square Southbound	0 <sup>15</sup> MINUTES
S2	Federal Triangle Southbound	0 <sup>9</sup> MINUTES

**M** Farragut North 8  MIN WALK

RD	Shady Grove	6 <sup>9</sup> MINUTES
RD	Silver Spring	7 MINUTES
RD	Glenmont	14 MINUTES

 U B E R

UberBLACK 3  
MINUTES

uberX 3  
MINUTES

# TransitScreen

## 1776

WHERE REVOLUTIONS BEGIN

\*\*\*




 K & 15th 3  MIN WALK

D6	Stadium - Armory Eastbound	1 <sup>16</sup> MINUTES
80	Fort Totten Northbound	6 <sup>34</sup> MINUTES
80	Kennedy Center Southbound	13 <sup>36</sup> MINUTES
D6	Sibley Hospital Westbound	37 <sup>93</sup> MINUTES




		MINUTES AWAY
CAR 2GO	1150 15th St NW	1
CAR 2GO	1160 15th St NW	1
CAR 2GO	1174 15th St NW	1

capital bikeshare BIKES EMPTY DOCKS

	Thomas Circle	1	31
	14th & Rhode Island Ave NW	1	22
	15th & L St NW	22	1

 K & 14th 6  MIN WALK

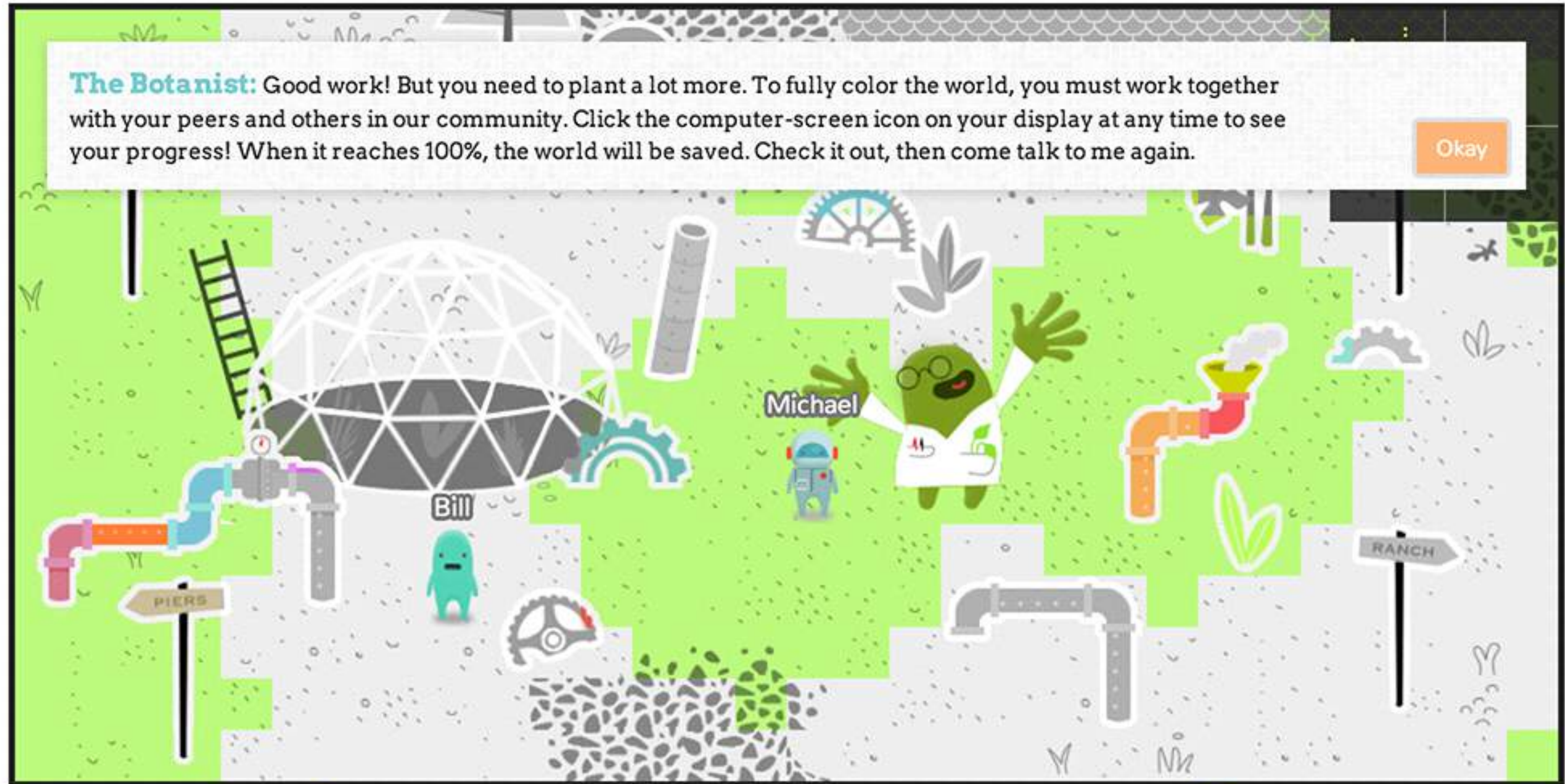
D6	Stadium - Armory Eastbound	1 <sup>2</sup> <sub>16</sub> MINUTES
	Woodley Park - Adams Morgan - McPherson Square Metro Northbound	2 <sup>2</sup> <sub>5</sub> MINUTES
	Georgetown - Union Station Eastbound	2 <sup>7</sup> <sub>11</sub> MINUTES
S4	Franklin Square Southbound	4 MINUTES

**M** McPherson Square 7  MIN WALK

OR	Vienna/Fairfax-GMU	4 MINUTES
BL	Franconia-Springfield	6 MINUTES
SV	Wiehle-Reston East	13 MINUTES

**The Botanist:** Good work! But you need to plant a lot more. To fully color the world, you must work together with your peers and others in our community. Click the computer-screen icon on your display at any time to see your progress! When it reaches 100%, the world will be saved. Check it out, then come talk to me again.

Okay



chat with other players...

Chat



Tue Jul 08 00:26:54 Bill: hey

Tue Jul 08 00:25:48 Bill has joined!



# Engagement Tools 101

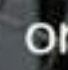
“Cities have the capability of providing something for everybody only because, and only when, they are created by everybody.”

Jane Jacobs

# Welcome to BikeWalkKC Community Forum.

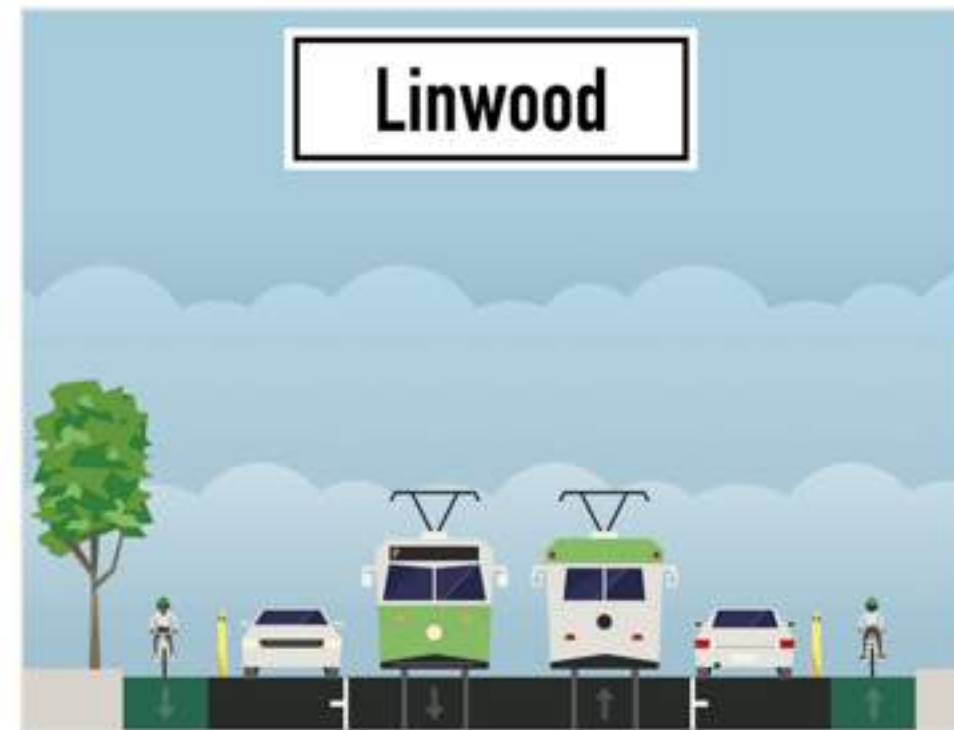
Help us plan the future of walking and biking in Greater Kansas City!

 Connect with Facebook

or  Sign Up with Email

## Complete the Streets - Design a Streetcar Route for People!

Posted Jul 18 9 Interactions  Topic is now closed 



*Show us how you define a complete street on Independence Ave, Linwood Blvd, and Main St.*

### Description

Kansas City is planning to add a streetcar on Independence Avenue and Linwood Boulevard. The plan also calls for the expansion of the downtown line along Main St. to the Plaza.

Follow these simple steps in order to remix your streets and share it with us. Show us what a complete street (with a streetcar) looks like to you!

1. Go to [streetmix.net](http://streetmix.net)
2. Start with blank street
3. Add the streetcar and all the other things you think it needs to make your street complete
4. Name your street (Linwood, Independence, or Main)
5. Click "share" and the "save as image"
6. Upload your street here and add a description

**MindMixer**

<https://mindmixer.com/>

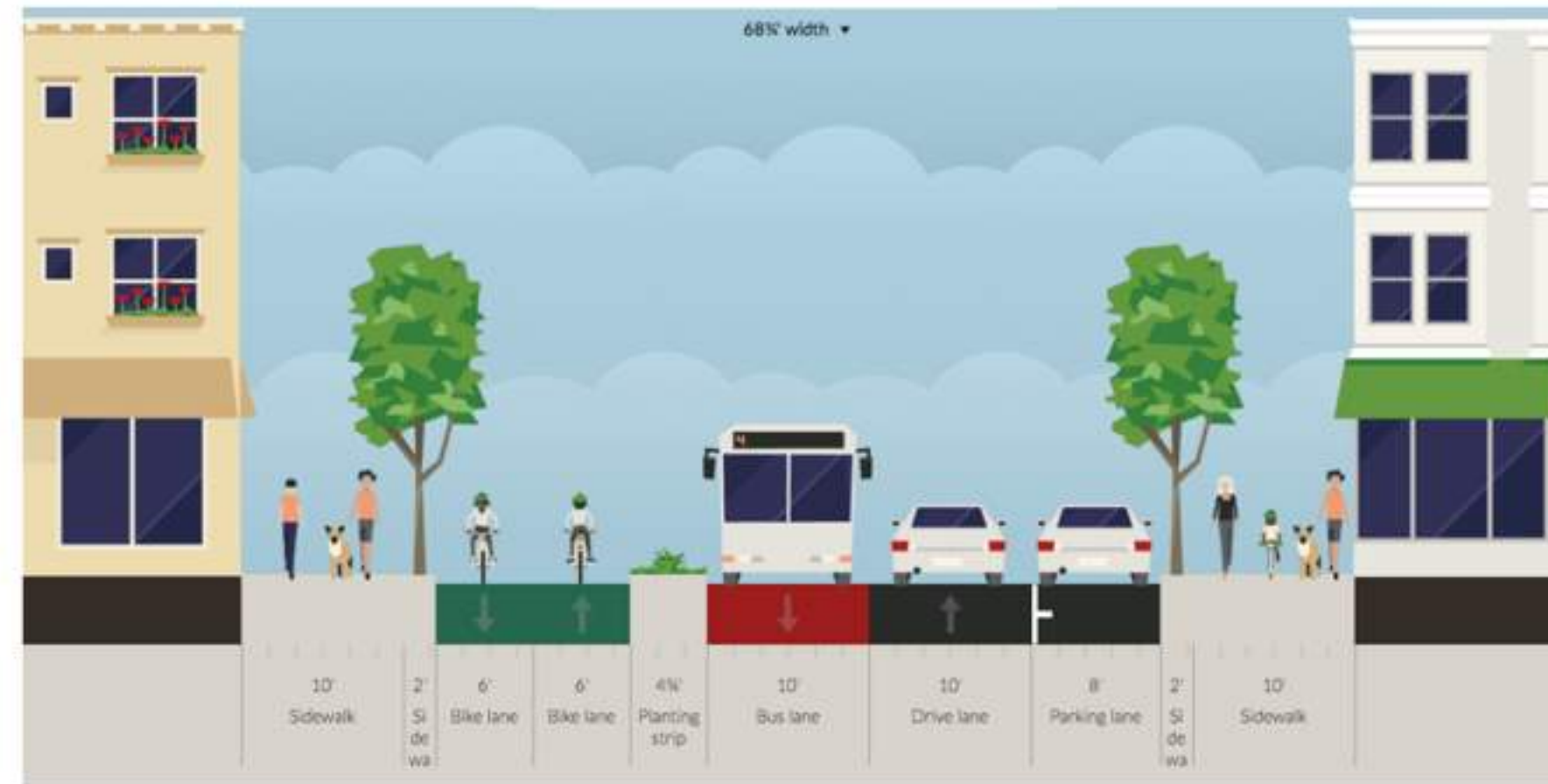


# 17 neighbors want a separated 2-way cycle track with a bus-only lane in one direction on **Polk Street**.

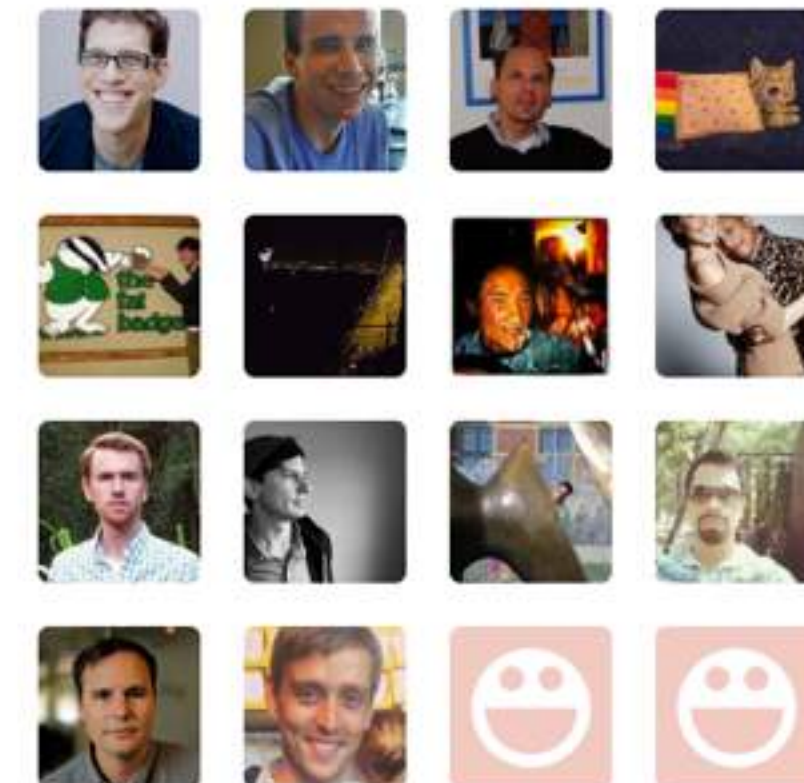
Suggested by [Teo Wickland](#) on Oct 5, 2013



Me Too



## Supporters All



## Topics

[Safety](#) [Streets](#) [Transit](#) [Urban](#)

Polk Street is wide enough to accommodate a separated 2-way cycle track on one side of the street and to retain



## SDOT Blog

Department of Transportation news and events



[« Previous post](#) | [SDOT Blog Home Page](#) | [Next post »](#)

### Once Around the Web: Streetmix – Go play with your street!



**Streetmix** is a free web app lets you mash up bike lanes, sidewalks, parks, transit and car lanes to see what kind of arrangements might be the most appealing and practical. What's your vision for the street outside? More cars? More bikes? New streetcar? More street trees? More sidewalks?

#### ASK US A QUESTION!

Have a question about our current work at the Seattle Department of Transportation? We're ready to get you an answer!

[Click here and scroll down](#)

#### Search SDOT Blog

#### Archives

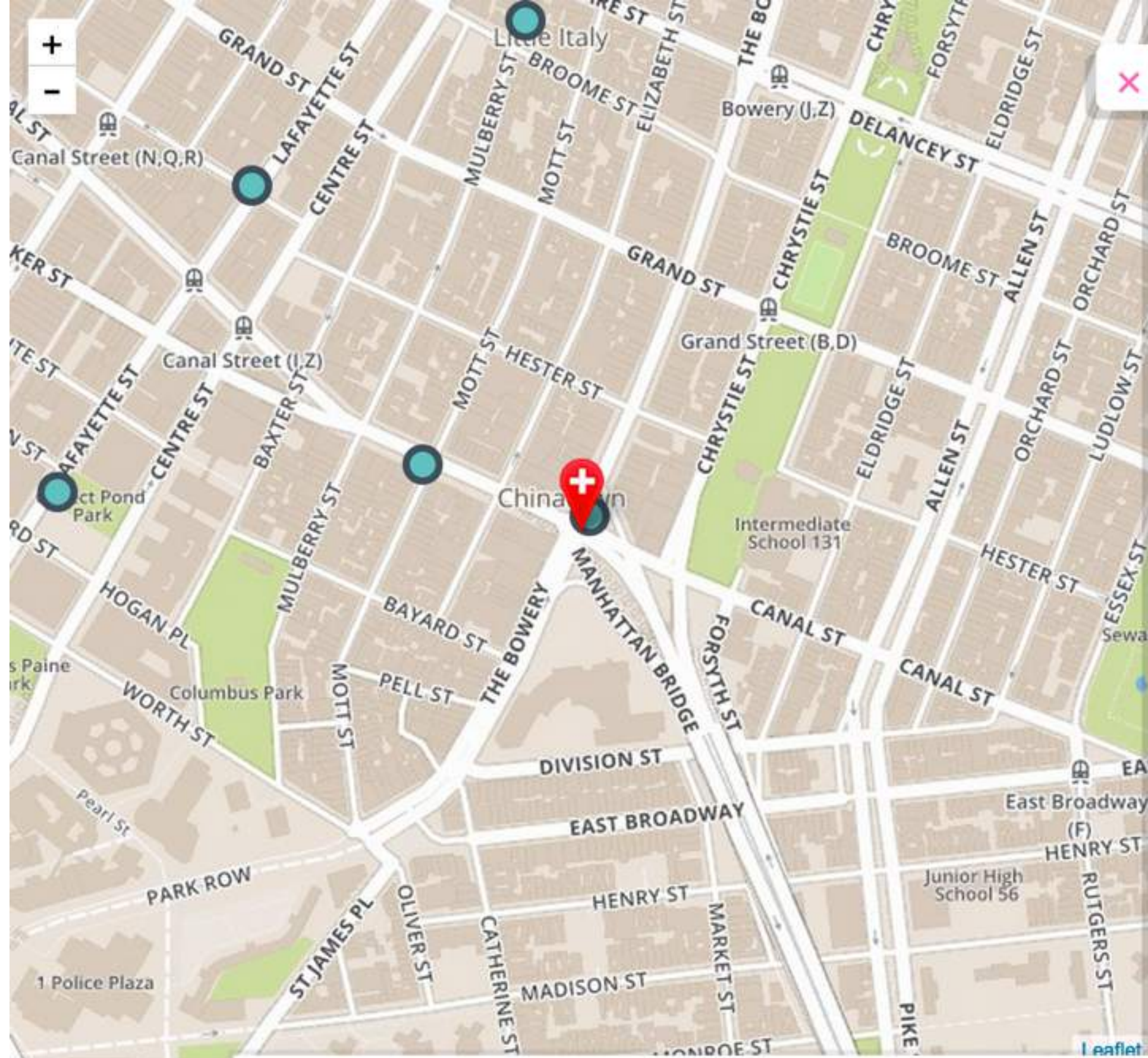
 [Subscribe to SDOT Blog](#)

#### Contact us

Call 206-684-ROAD

#### SDOT Photos





Drag the map to where you want bike parking.

### Why do you want bike parking here?

Location Name  
Corner of The Bowery and Manhattan Bridge

Reason  
It's close to my house!

Your Name  
Your Email  
optional

Please provide some optional/private information about yourself.

Okay Decline

# Chinatown Bike Parking

Tell us where you need bike parking.

[Map](#)  
[Demo Disclaimer](#)

 [Join us on Facebook!](#)

We work hard to consistently serve bicyclists in Chinatown by installing bike racks on city sidewalks each year. You can help us locate the best places for these racks by using this map to put in a request where more bike parking is needed.

We will review your request in the field looking for sites on the public right-of-way that don't interfere with pedestrian travel and are clear of other street furniture. While we try to conduct field surveys as promptly as possible, the process can sometimes take several months. Many factors influence if and when a bike rack can be installed, so the date and time of installation cannot be guaranteed.



[Suggest Location](#)

[News](#)

[Timeline](#)

[FAQ](#)

[Bike Smart!](#)

[Documents](#)

[Contact Us](#)

# New York City Bike Share

Help shape NYC's new transit option



tanya wants a Riverdale station. [Check it out →](#)



Tell us where you'd like to see a bike share station

Click "Suggest Station", then drag the map pin to make adjustments.

Click "Confirm Station" when you're done, and tell us why it's a good location.

**SUGGEST STATION**



**Shareabouts**

<https://openplans.org/>

# Lessons from Streetmix

# Go to the people

“A desk is a dangerous place from which to view the world.”

John Le Carré



A close-up photograph of a baseball resting on a green grass field. The baseball is white with red stitching and is positioned on the right side of the frame. The background is a blurred mix of green grass and brown dirt. Overlaid on the image is white text in a bold, sans-serif font. The text reads: "TOP STARTUP MISCONCEPTIONS: IF YOU BUILD IT, THEY WILL COME".

TOP STARTUP MISCONCEPTIONS:  
**IF YOU BUILD IT, THEY WILL COME**

(source unknown)



**Textizen**

<https://www.textizen.com/>

# Don't give homework

“Toys and games are the preludes to serious ideas.”

Charles Eames









## Mina Kvarter (“My Blocks”)

<http://byggjtjanst.se/aktuellt/mina-kvarter/>



## Mina Kvarter ("My Blocks")

<http://byggjtjanst.se/aktuellt/mina-kvarter/>





## Participatory Chinatown

<http://engagementgamelab.org/games/participatory-chinatown/>



## Participatory Chinatown

<http://engagementlab.org/games/participatory-chinatown/>

PlanIt  
Philly 24/7

MISSION | PUBLIC SQUARE | **BANK**

1300 | 23rd | 6 | Janelle D. ▾



# PLEDGE YOUR COINS TO CAUSES



ORDER BY: Newest causes first ▾

SEARCH Search for cause



## A new baseball field in Battery Heights

4

Lorem ipsum dolor sit amet, consectetur adipiscing elit, sed diam nonummy nibh euismod tincidunt ut laoreet dolore magna aliquam erat volutpat. Ut wisi enim ad minim veniam, quis nostrud exerci tation ullamcorper suscipit

### Community PlanIt

<http://engagementgamelab.org/games/community-planit/>

# Invite creativity and collaboration

“Before you can think outside of the box, you have to start with a box.”

Twyla Tharp





# Shell Beach Express



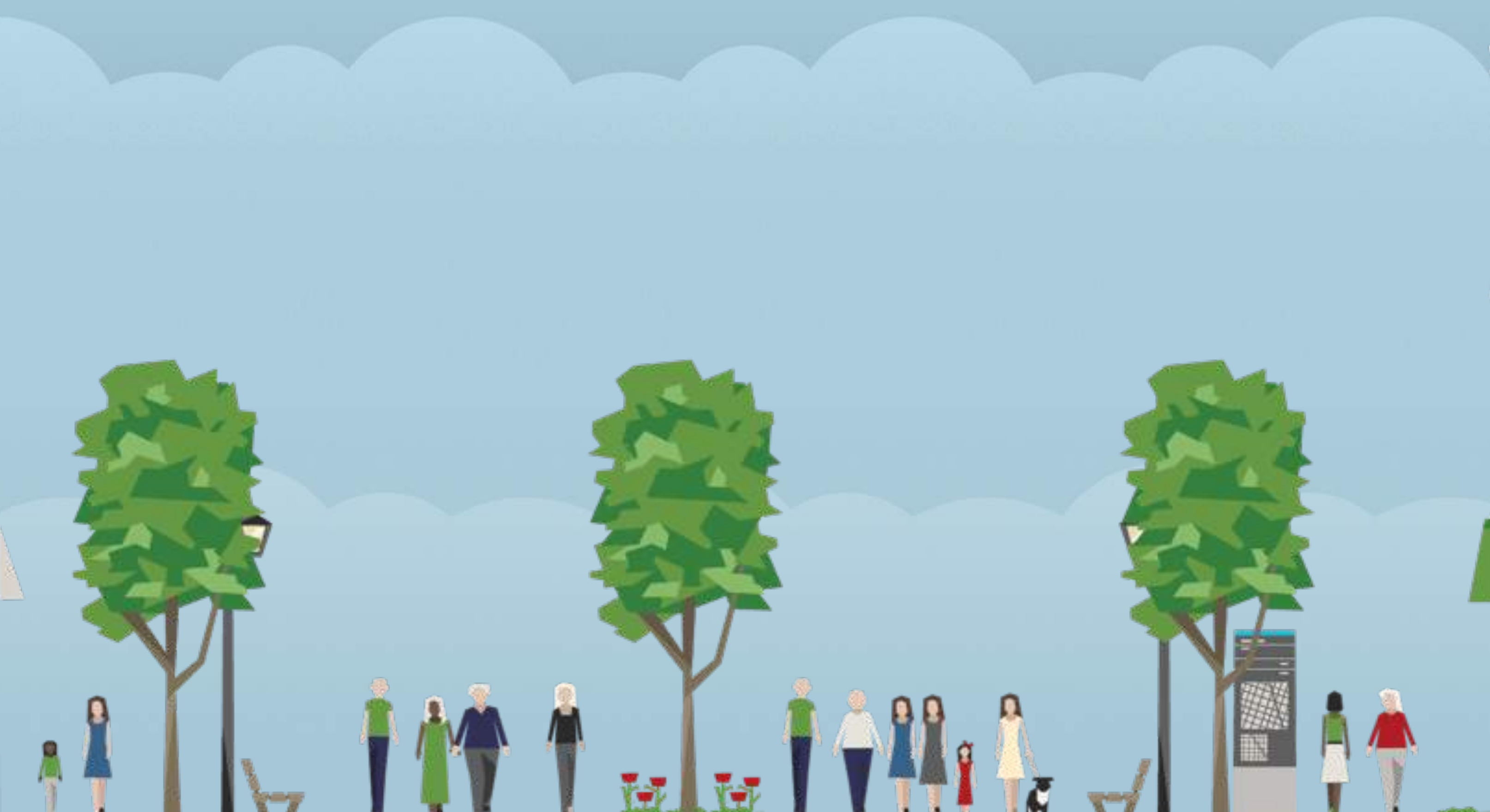
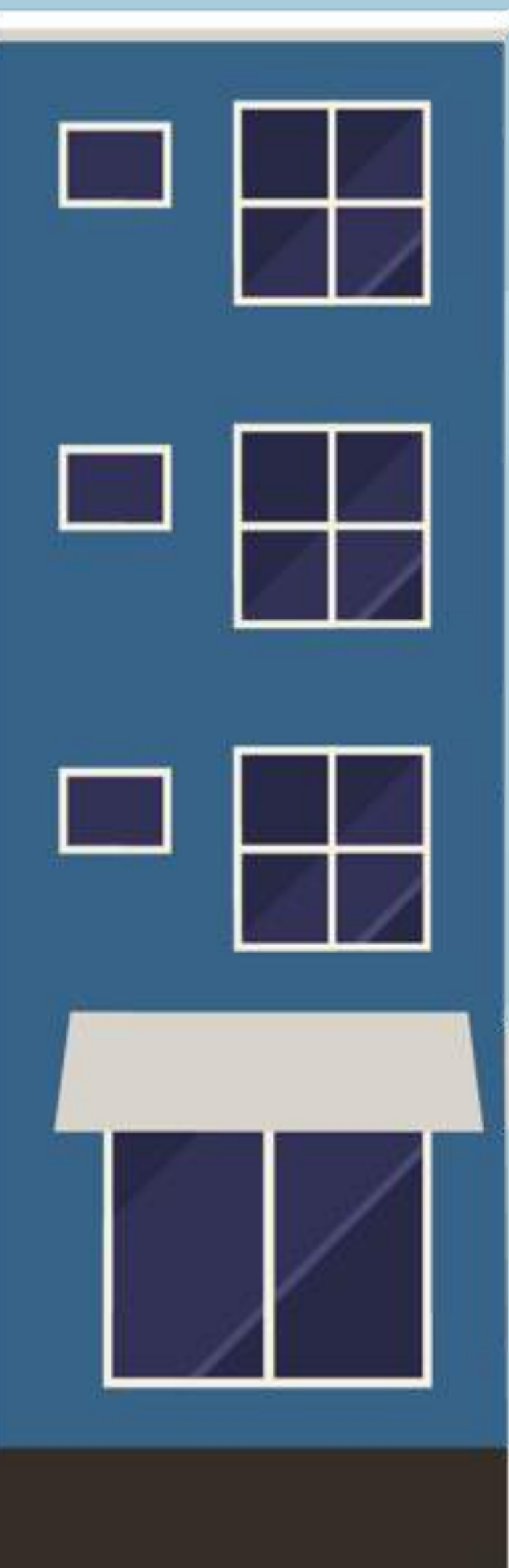
# Post Energy Crisis Street



2m .3.3 1.4m .3 1m .3 .6 .3 .6 .6 .6 .6 1m .3.3.3 .6 1m .8m .3.3.3 1m .6 .6 .6 .6 .3 .6 .3 1m .3 1.4m .3.3 2m

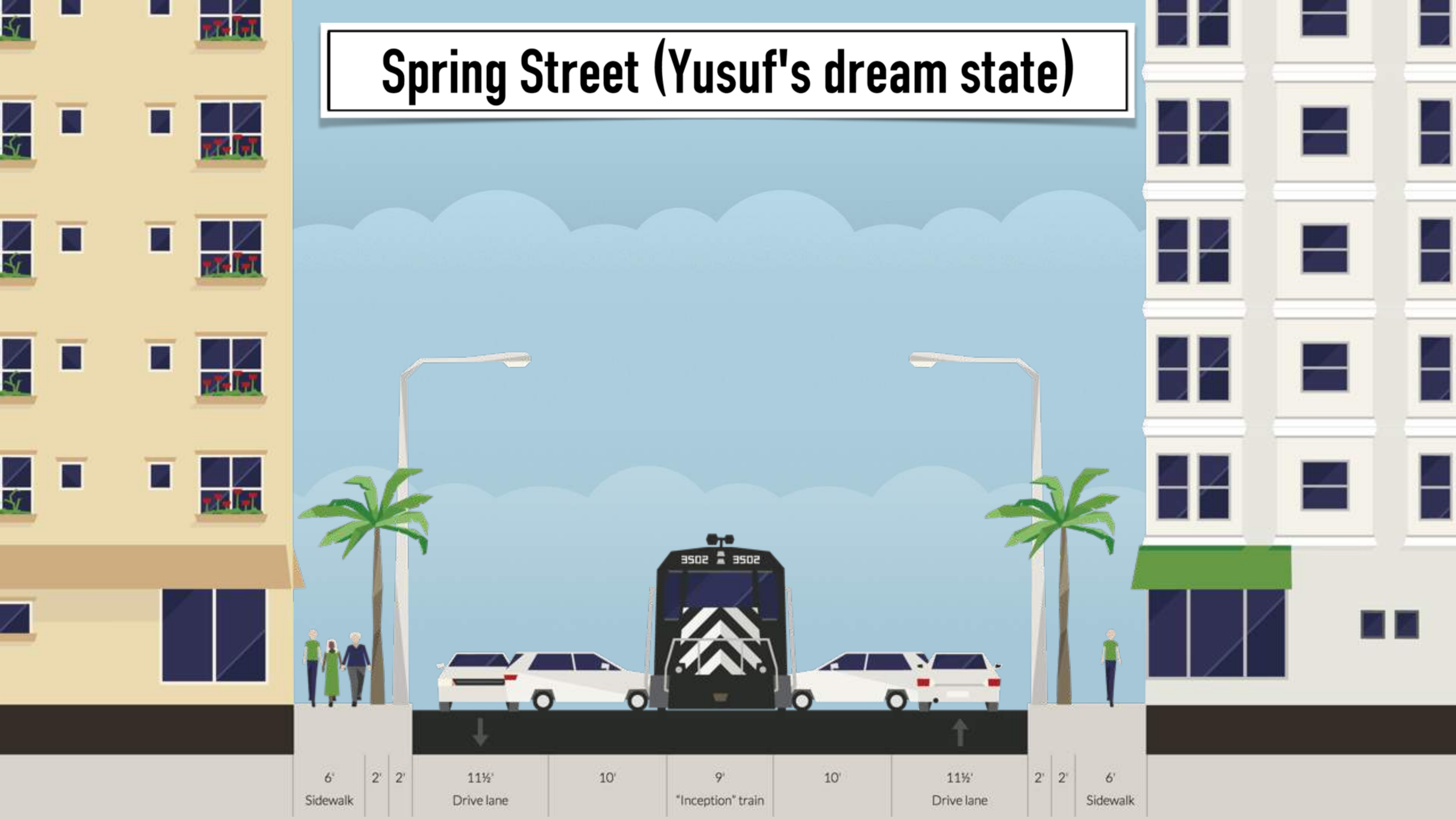


# 강주영 보행거리



2m	.6	.6	1.1m	4m	.6	.6	.7	4m	1.2m	.6	.6	.6	2m	.8m
Sidewalk				Sidewalk				Sidewalk	Bench				Sidewalk	

# Spring Street (Yusuf's dream state)



6'  
Sidewalk

2' 2'

11½'  
Drive lane

10'

9'  
"Inception" train

10'

11½'  
Drive lane

2' 2'

6'  
Sidewalk



# It's not the technology, stupid

“Computer design is quite often merely bad design done on a computer.”

Mike Hicks

Field Guides  
To Ensuring Voter Intent

Vol. 03

# Testing ballots for usability

Field-researched, critical election  
design techniques to help ensure that  
every vote is cast as voters intend

**Civic Design**

<http://civicdesigning.org/>

OFFICIAL BALLOT, GENERAL ELECTION  
PALM BEACH COUNTY, FLORIDA  
NOVEMBER 7, 2000

OFFICIAL BALLOT, GENERAL ELEC  
PALM BEACH COUNTY, FLORID  
NOVEMBER 7, 2000

PRESIDENT VICE PRESIDENT (Candidates will be listed with their electors.) (Group)	(REPUBLICAN) GEORGE W. BUSH - PRESIDENT DICK CHENEY - VICE PRESIDENT	3 →	← 4	(REFORM) PAT BUCHANAN - PRESIDENT EZOLA FOSTER - VICE PRESIDENT	
	(DEMOCRATIC) AL GORE - PRESIDENT JOE LIEBERMAN - VICE PRESIDENT	5 →	← 6	(SOCIALIST) DAVID McREYNOLDS - PRESIDENT MARY CAL HOLLIS - VICE PRESIDENT	
	(LIBERTARIAN) HARRY BROWNE - PRESIDENT ART OLIVIER - VICE PRESIDENT	7 →	← 8	(CONSTITUTION) HOWARD PHILLIPS - PRESIDENT J. CURTIS FRAZIER - VICE PRESIDENT	
	(GREEN) RALPH NADER - PRESIDENT WINONA LaDUKE - VICE PRESIDENT	9 →	← 10	(WORKERS WORLD) MONICA MOOREHEAD - PRESIDENT GLORIA La RIVA - VICE PRESIDENT	
	(SOCIALIST WORKERS) JAMES HARRIS - PRESIDENT MARGARET TROWE - VICE PRESIDENT	11 →			
	(NATURAL LAW) JOHN HAGELIN - PRESIDENT NAT GOLDHABER - VICE PRESIDENT	13 →			
					WRITE-IN CANDIDATE To vote for a write-in candidate, follow the directions on the long stub of your ballot card.

**Before**

THIS LINE IS ALL CAPITAL LETTERS.



**After**

This Line is Upper and Lowercase.



**No. 01**

# Use lowercase letters.

Lowercase letters are more legible than ALL CAPITAL LETTERS because they make shapes that are easier to recognize.

# NOTICE of Public Meeting



**For:** Highland Village  
Neighborhood Traffic Project

**By:** City of Houston  
Department of Public Works & Engineering  
Transportation Planning Section

**Date:** Wednesday, June 11, 2003

**Time:** 7:00 P.M - 8:30 P.M.

**Place:** Will Rogers Elementary School  
3101 Wesleyan

Dear Resident,

Working with representatives from your neighborhood, a plan has been developed to reduce the amount of documented cut-through traffic in your neighborhood. As a result of this plan, physical modifications to your neighborhood streets are being considered. This project is the result of an application from your neighborhood for participation in the Neighborhood Traffic Project program.

A public meeting has been scheduled to present these proposed modifications and to discuss the impacts they may have on neighborhood driving patterns. We have attached a map of the proposed modification for your review on the back of this form.

We would like to hear from you concerning these proposed modifications. Public comments will be taken during the meeting or written comments (form provided below) can be mailed to our office during a 14-day period following the public meeting. After the comment period, the Department of Public Works and Engineering will review all the information and comments regarding the project. If approved, temporary devices, which mimic the proposed modifications, will be installed to evaluate actual impacts.

For further information, please call the Transportation Planning Section at 713-837-7280. Thank you for your participation and interest in traffic safety on Houston's streets.

## **Comment Card** .....

Do you have any comments regarding the proposed Neighborhood Traffic Project? All comments must be returned to us within 14 days following the Wednesday, June 11, 2003 meeting. (please print)



## **Project:**

Forest Park Southeast  
Neighborhood Plan  
& Form-Based District

## **Purpose:**

Please join us to help  
your community plan for  
the future of the  
neighborhood!  
Please bring your  
family and friends!

## **Participants:**

Open to all members of  
the general public.

## **Map of Study Area:**



## **List of Meetings:**

- Public Meeting #1: Introduction  
*Tuesday, March 4, 2014; 6:00 - 7:30 PM*
- Public Meeting #2: Plan Options  
*Tuesday, April 29, 2014; 6:00 - 7:30 PM*
- Public Meeting #3: Preferred Plan  
*To Be Determined*
- Public Meeting #4: Form-Based District  
*To Be Determined*

## **Meeting Location:**


Adams Park Community Center  
4317 Vista Avenue; St. Louis, MO 63110

For further information, please contact **Matthew Green** | Project Manager with Park Central Development  
at 314.535.5311 | [matthew@parkcentraldevelopment.org](mailto:matthew@parkcentraldevelopment.org) | 4512 Manchester Avenue Suite 100



- Department of Human Services
- About Us
- Contact Us
- Cash for Families
- Data
- Food Benefits
- Local Office Locations
- Nutrition
- Publications
- Refugee Services
- Housing Assistance
- Parents as Scholars: Helping Parents Get an Education
- Self-Sufficiency Office Locations
- The JOBS Program

### SNAP Applicant and Recipient Information



**How do I know if I am eligible for food benefits?**

To apply for food benefits you can go to the [closest local office](#). To find out where the closest office is you can [contact Oregon SafeNet, 1-800-723-3638](#). Or you can visit the DHS website for [a list of DHS self-sufficiency offices](#). The application can also be printed, filled out by hand and sent to your local office.

To find out if you are eligible for, please use your [SNAP benefits estimator](#) to get an idea about the amount of food benefits you may be eligible for.

**How do I apply for food benefits?**

[Apply online](#) for food benefits.

OR

You can apply for food benefits by downloading an application and instructions below. You will need the Adobe [Acrobat Reader](#) software to view these PDF files. You can download the free software at <http://get.adobe.com/reader/>

For questions about how or where to apply for food stamps Contact Oregon SafeNet, 1-800-723-3638

- These application forms should be printed and filled out by hand and then sent to your local [DHS self-sufficiency office](#).
- English (PDF)
  - Spanish (PDF)
  - Russian (PDF)
  - Somali (PDF)
  - Vietnamese (PDF)
- If you are having difficulty opening the application forms, please contact us to [report the problem](#).

**Where do I send the application? Whom should I contact if I have questions?**

- Families and single adults with a disability [contact your local DHS self-sufficiency office](#).
- Seniors and people with disabilities [contact a Seniors & People with Disabilities or Area Agencies on Aging office](#).
- For more information on how and where to apply for food stamps, you can call Oregon SafeNet, 1-800-723-3638.

**What can I buy with food benefits?**

You can find an explanation of the types of food items you can buy with your EBT card on the USDA [Food and Nutrition Services Web site](#).

**How can I make the most of my food benefits?**

For information about making good use of your food money see [USDA](#).

Also see [Food Benefits Nutrition Education](#)

**How can I find out the balance on my Oregon Trail card?**

There are two ways to find out how much money is in your food benefit or cash account.

- You can look at your last store or ATM receipt (also see [How to Use Your Oregon Trail Card](#) pages 14 and 15)
- You can call customer service at 1-888-997-4447



- Information for applicants and recipients**
- About SNAP
  - Am I eligible?
  - Am I an eligible student?
  - How do I apply for benefits?
  - Where do I send the application?
  - What can I buy with SNAP benefits?
  - How can I find out the balance on my account?
  - Whom should I contact for more information?

- Information for retailers**
- How can my store be certified to accept SNAP benefits?
  - What items can be bought with food benefits?
- SNAP Resources**
- Other resources
  - How to use your Oregon Trail Card
  - Publications & data
  - How to report food benefits fraud



Also, applying online — the #1 purpose of this screen — gets lost in a sea of equally-prominent tiny text links



**My Street**  
Commercial Street  
Total Width: 21.1 m  
**Furnishings Zone: 1.0 m**  
(max 2.0 m, min 1.0 m)

**Edit street element**  
Commercial Street  
**Furnishings Zone**

Slider: 1.0 m  
min 1.0 m max 2.0 m  
Buttons: Set to min width, Set to max width

Choose surface colour  
Color palette: white, light green, orange, yellow, red, cyan, grey, black, More colours

Choose surface texture  
Texture palette: various patterns and colors

Level: 0.1 m (up/down arrows)




## Bayou St. John Bridge

There are two possible solutions for the Bayou St. John bridge, based on how the lanes approach from the Paris Avenue roundabout. Each cross section is shown below, followed by three options for the roundabout. Under the current weekend closure, the entire north span is closed to automobile traffic.

### Bayou St. John Bridge Option 1 (24' each side)



### Bayou St. John Bridge Option 2 (24' each side) ...



**Design**

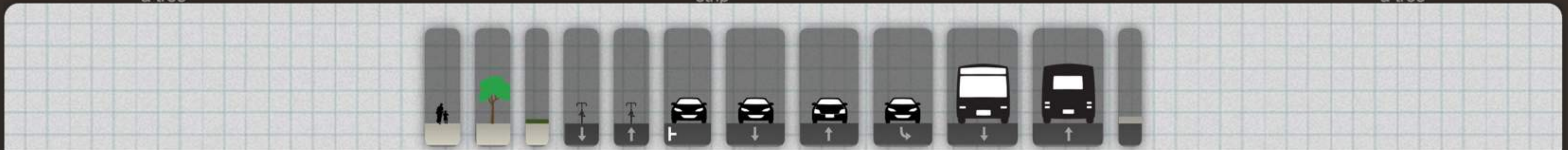
**User Experience**

# Prototype, not plan

“A good traveler has no fixed plans and is not intent upon arriving.”

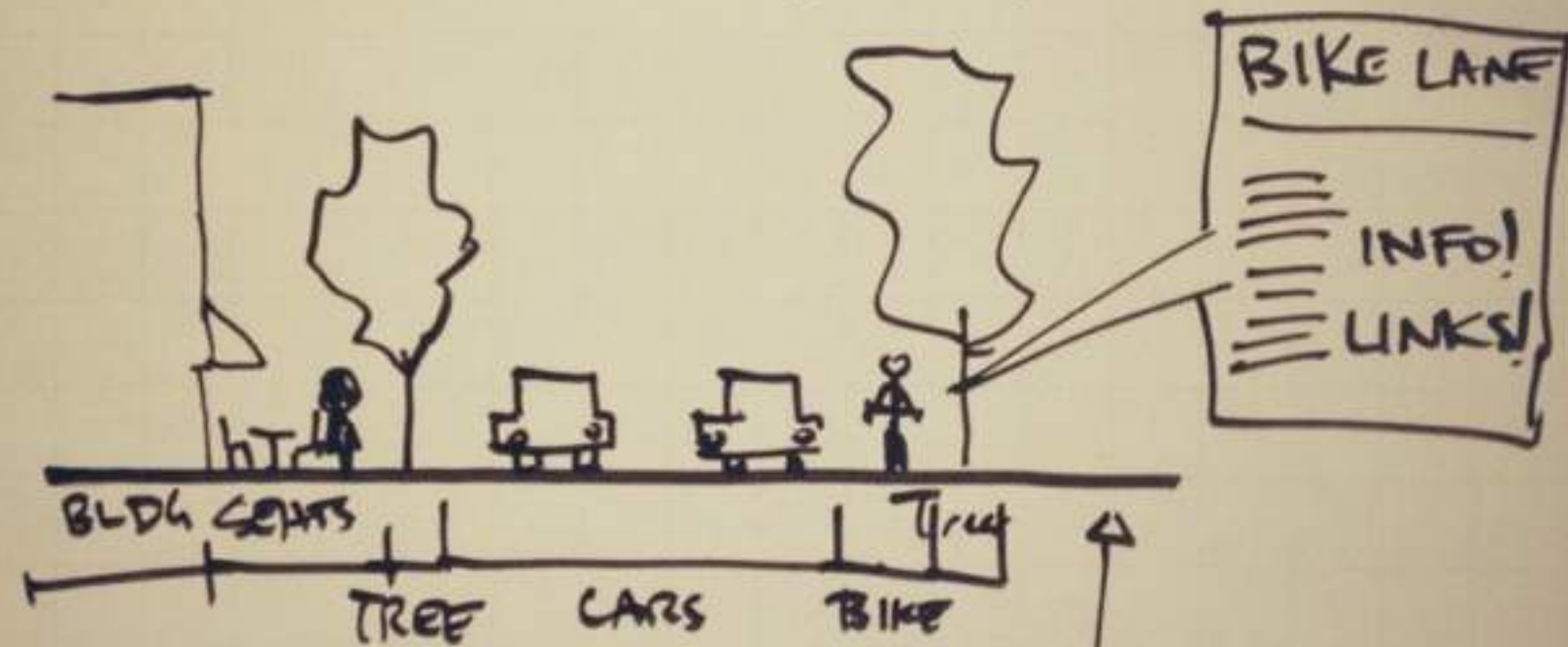
Lao Tzu

# STREETMIX<sub>alpha</sub>



# Super BLOCKEE 2

- Create street sections in your browser!
- Share designs with your friends + your city!
- Learn how to achieve change in your community!



YOUR IDEA HERE!

LOOKS LIKE A SUPER MARIO GAME!

TONS OF FUN!

CIVIC ENGAGEMENT!



# Vision for Master Plan Union Station 2050

Los Angeles, CA



## How to draw an owl

1.



1. Draw some circles

2.



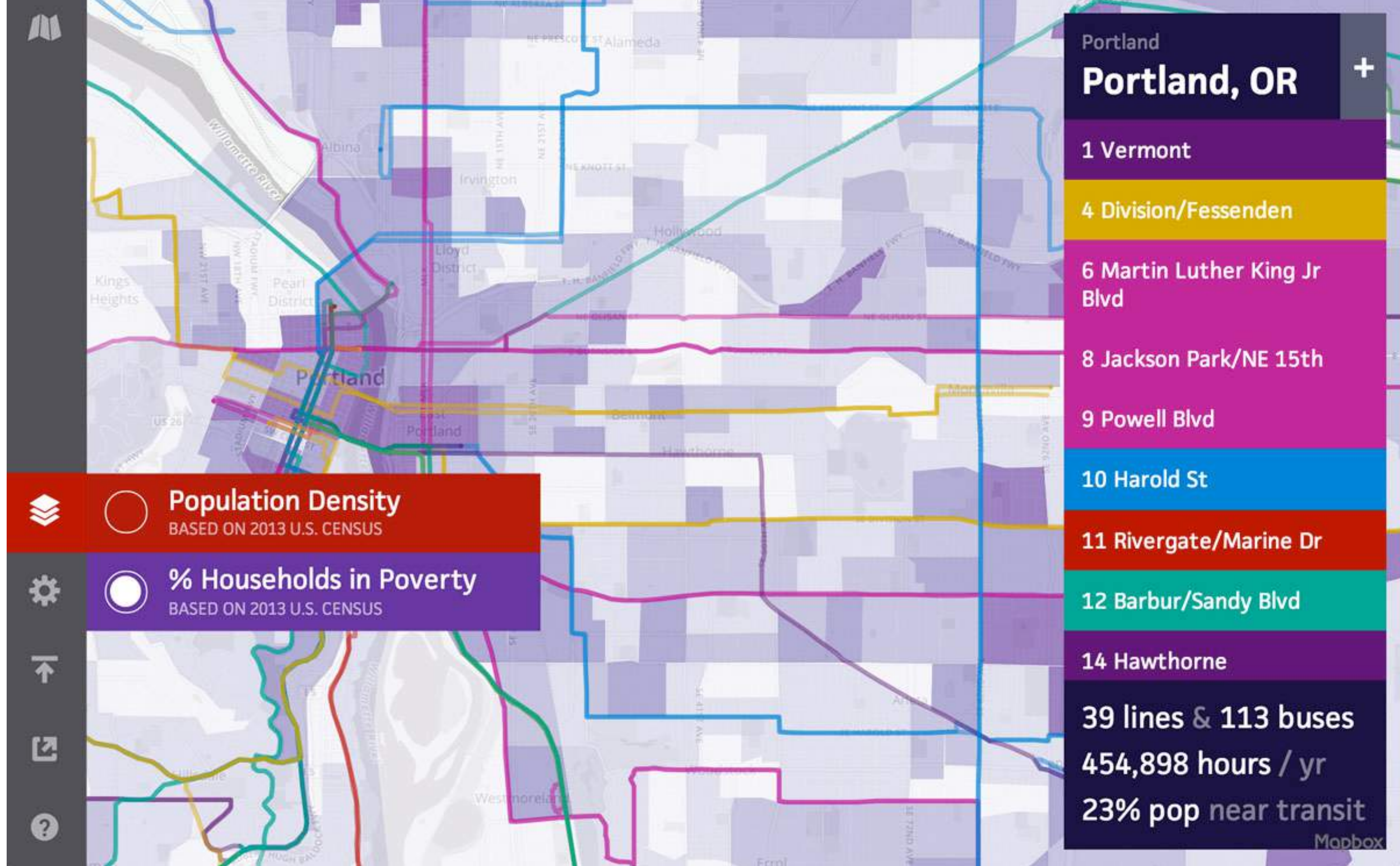
2. Draw the rest of the fucking owl



Transel Elevator Inc.

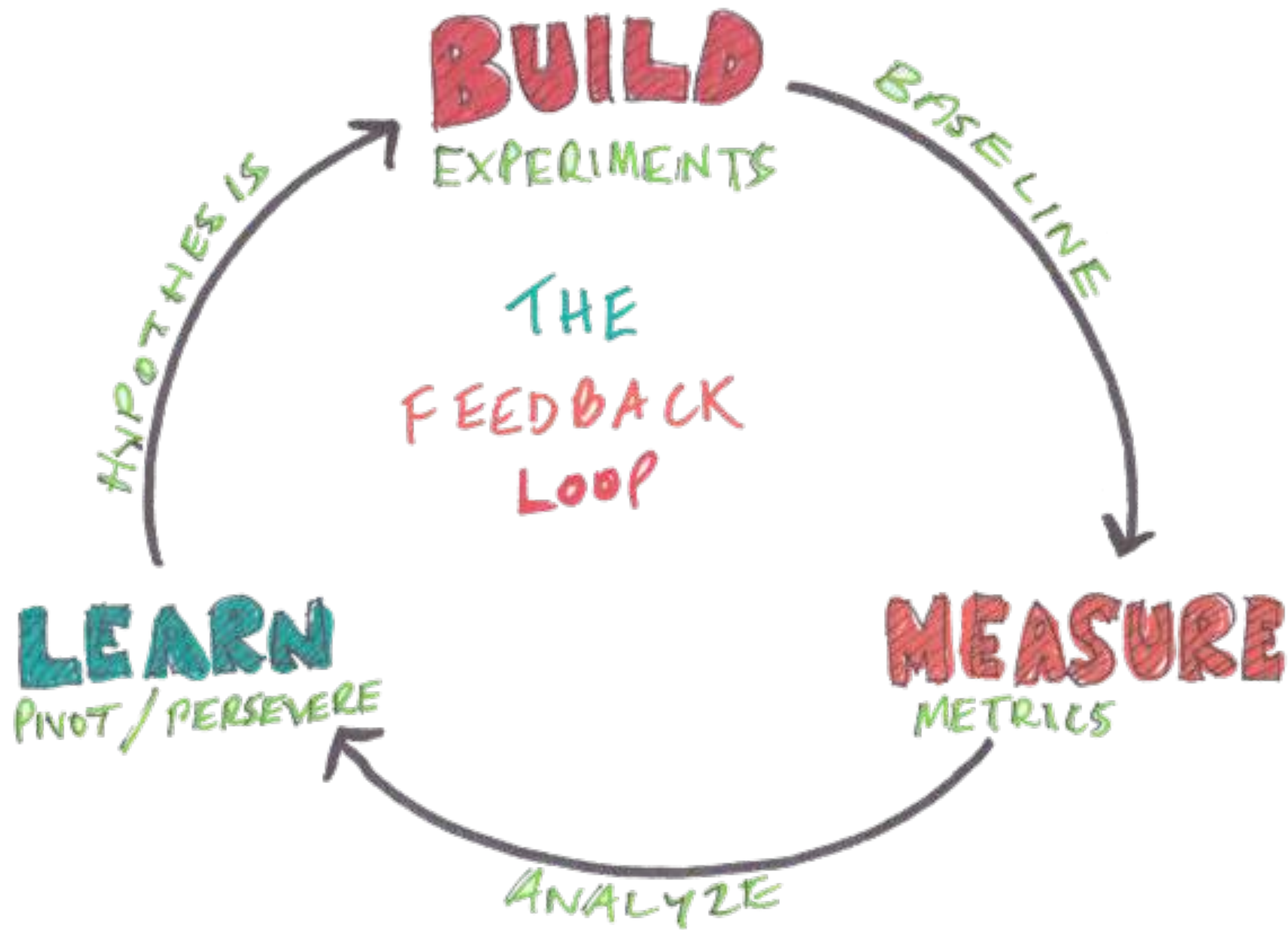
The Professional Choice





**Transitmix**

<http://www.transitmix.net/>



# Lessons from Streetmix

- Go to the people
- Don't give homework
- Invite creativity and collaboration
- It's not the technology, stupid
- Prototype, not plan

# Thanks!

@saikofish

lou@louhuang.com

