

TRANSPORTATION IMPROVEMENT PROGRAM

FY 2025-2029



Municipal Reports

Weston

APPROVED 7/11/2024

For complaints, questions or concerns about civil rights or nondiscrimination; or for special requests under the Americans with Disabilities Act, please contact: Carl Ema Title VI Coordinator at (954) 876-0052 or emac@browardmpo.org

Transportation Improvement Program Overview

The Broward Metropolitan Planning Organization (MPO)'s Transportation Improvement Program (TIP) is a five-year program that prioritizes and documents the funding of transportation improvement projects the region expects to build over the next five years. The projects include reconstruction, maintenance, and operation of major highways, arterials, and intersections; maintenance and expansion of the public transit, aviation, and port systems; construction for bicycle paths, and improvements for pedestrians within the Broward region.

The Broward MPO updates the TIP annually and the MPO Board approves the TIP in July every year. The most recently approved TIP by the Board is the FY 2025-2029 TIP. The full TIP document is available at the link <https://browardmpo.org/core-products/transportation-improvement-program-tip>.

To help municipal partners review and monitor projects in the TIP falling in their jurisdiction, the Broward MPO has extracted a list of projects for each municipality from the FY 2025-2029 TIP. The list presented includes projects that fall in this municipal boundary but exclude county-wide and state-wide projects. The chart to the right illustrates how project information is organized.

How to Read the Broward MPO's TIP Pages

Broward MPO Transportation Improvement Program - FY 2025 - 2029

4525181 A1A/N OCEAN BLVD & NE 27TH ST **Non-SIS**

Work Summary: TRAFFIC SIGNALS **From:**
To:
Lead Agency: FDOT **Length:** 0.2 **MTP Pg.:** 5-38

| Phase | Fund Source | 2025 | 2026 | 2027 | 2028 | 2029 | Total |
|--------------|-------------|------------------|----------|----------|----------|----------|------------------|
| CST | LF | 8,456 | 0 | 0 | 0 | 0 | 8,456 |
| CST | DIH | 40,636 | 0 | 0 | 0 | 0 | 40,636 |
| CST | SA | 115,134 | 0 | 0 | 0 | 0 | 115,134 |
| CST | DDR | 1,477,396 | 0 | 0 | 0 | 0 | 1,477,396 |
| Total | | 1,641,622 | 0 | 0 | 0 | 0 | 1,641,622 |

Prior Year Cost: 107,843
Future Year Cost:
Total Project Cost: 1,749,285

Project Description: TO CONVERT UNSIGNALIZED INTERSECTION OF A1A & NE 27TH STREET TO SIGNALIZED INTERSECTION GOES-WITH 452467-1

- A** Project Identification
Project Number (FM#)
Project Name
- B** Project Characteristics
Work Summary
Lead Agency
Limits
Length
MTP Page Number
SIS Classification
- C** Financial Information
Phase
Fund Source
Year Funds are Programmed
Prior Year Cost
Future Year Cost
Total Project Cost
- D** Project Description
Additional information linked to the project
- E** Project Location Map
Location of where the project will be implemented

The TIP may be revised due to changes in project status, project cost, and/or available revenues. These changes can be either a TIP amendment or an administrative modification. To download most recent Municipal TIP Report, please visit <http://browarddev.dtstiptool.com/index.pl>

Steps to download the most recent Municipal TIP Report:

- Step 1: **Visit** <http://browarddev.dtstiptool.com/index.pl>
- Step 2: Select dataset FY 2025-2029 TIP
- Step 3: **Click** the tab titled “Database Search”
- Step 4: Next to the “Municipality” search feature, **click** on the dropdown icon to scroll and **select** the municipality of your choice.
- Step 5: Once the desired municipality is selected, the table below will filter projects to display only those that are within the municipal boundary. **Click** the “Get Report” button above the table.
- Step 6: A window will appear on your screen where you are presented options on how you would like the information displayed. **Read** through the options and **select** the one of your choice.
- Step 7: **Unselect** “Cover Page”
- Step 8: **Click** the “Generate Report” button on the bottom right of the window.
- Step 9: A new button will appear on the window, titled “Download Report”. **Click** this and you will be directed to a new tab with a downloadable PDF of your customized report.
- Step 10: **Enjoy!**

For questions please contact Jihong Chen at chenj@browardmpo.org or (954) 876-0066.

Legends and Abbreviations:

Funding Legend

| Fund Code | Fund Code Description | Funding Source |
|-----------|--------------------------------|----------------------|
| ACBR | ADVANCE CONSTRUCTION (BRT) | Federal |
| ACBZ | ADVANCE CONSTRUCTION (BRTZ) | Federal |
| ACFP | AC FREIGHT PROG (NFP) | Federal |
| ACNP | ADVANCE CONSTRUCTION NHPP | Federal |
| ACNR | AC NAT HWY PERFORM RESURFACING | Federal |
| ACPR | AC - PROTECT GRANT PGM | Federal |
| ACSA | ADVANCE CONSTRUCTION (SA) | Federal |
| ACSS | ADVANCE CONSTRUCTION (SS,HSP) | Federal |
| ACSU | ADVANCE CONSTRUCTION (SU) | Federal |
| BNIR | INTRASTATE R/W & BRIDGE BONDS | R/W and Bridge Bonds |
| BRRP | STATE BRIDGE REPAIR & REHAB | State 100% |
| CARB | CARBON REDUCTION GRANT PGM | Federal |
| CARM | CARB FOR SM. URB. 5K - 49,999 | Federal |
| CARU | CARB FOR URB. AREA > THAN 200K | Federal |
| CD23 | CONGRESS GF EARMARKS HIP 2023 | Federal Earmark |
| CIGP | COUNTY INCENTIVE GRANT PROGRAM | State 100% |
| CM | CONGESTION MITIGATION - AQ | Federal |
| D | UNRESTRICTED STATE PRIMARY | State 100% |
| DDR | DISTRICT DEDICATED REVENUE | State 100% |
| DI | ST. - S/W INTER/INTRASTATE HWY | State 100% |
| DIH | STATE IN-HOUSE PRODUCT SUPPORT | State 100% |
| DIS | STRATEGIC INTERMODAL SYSTEM | State 100% |
| DITS | STATEWIDE ITS - STATE 100%. | State 100% |
| DL | LOCAL FUNDS - PTO - BUDGETED | Local |
| DPTO | STATE - PTO | State 100% |
| DRA | REST AREAS - STATE 100% | State 100% |

| Fund Code | Fund Code Description | Funding Source |
|------------------|--------------------------------|-----------------------|
| DS | STATE PRIMARY HIGHWAYS & PTO | State 100% |
| DSB2 | EVERGLADES PKY/ALLIGATOR ALLEY | Toll/Turnpike |
| DSBD | I-95 EXPRESS LANES | Toll/Turnpike |
| DSBF | I-595 | Toll/Turnpike |
| DSPC | SERVICE PATROL CONTRACT | State 100% |
| FAA | FEDERAL AVIATION ADMIN | Federal |
| FCO | PRIMARY/FIXED CAPITAL OUTLAY | State 100% |
| FRA | Federal Rail Administration | Federal |
| FTA | FEDERAL TRANSIT ADMINISTRATION | Federal |
| GFBR | GEN FUND BRIDGE REPAIR/REPLACE | Federal |
| GFBZ | GENERAL FUND BRIDGE OFF-SYSTEM | Federal |
| GFEV | GEN. FUND EVEHICLE CHARG. PGM | Federal |
| GFSU | GF STPBG >200 (URBAN) | Federal |
| GMR | GROWTH MANAGEMENT FOR SIS | State 100% |
| HSP | SAFETY (HIWAY SAFETY PROGRAM) | Federal |
| LF | LOCAL FUNDS | Local |
| NHPP | IM, BRDG REPL, NATNL HWY-MAP21 | Federal |
| NSTP | NEW STARTS TRANSIT PROGRAM | State 100% |
| NSWR | 2015 SB2514A-NEW STARTS TRANST | State 100% |
| PKBD | TURNPIKE MASTER BOND FUND | Toll/Turnpike |
| PKLF | LOCAL SUPPORT FOR TURNPIKE | Local |
| PKM1 | TURNPIKE TOLL MAINTENANCE | Toll/Turnpike |
| PKYI | TURNPIKE IMPROVEMENT | Toll/Turnpike |
| PKYO | TURNPIKE TOLL COLLECTION/OPER. | Toll/Turnpike |
| PKYR | TURNPIKE RENEWAL & REPLACEMENT | Toll/Turnpike |
| PL | METRO PLAN (85% FA; 15% OTHER) | Federal |
| PORT | SEAPORTS | State 100% |
| PROT | PROTECT GRANT PROGRAM | Federal |
| REPE | REPURPOSED FEDERAL EARMARKS | Federal Earmark |
| SA | STP, ANY AREA | Federal |

| Fund Code | Fund Code Description | Funding Source |
|------------------|----------------------------------|-----------------------|
| SIWR | 2015 SB2514A-STRATEGIC INT SYS | State 100% |
| SM | STBG AREA POP. W/ 5K TO 49,999 | Federal |
| SR2T | SAFE ROUTES - TRANSFER | Federal |
| STED | 2012 SB1998-STRATEGIC ECON COR | State 100% |
| SU | STP, URBAN AREAS > 200K | Federal |
| TALT | TRANSPORTATION ALTS- ANY AREA | Federal |
| TALU | TRANSPORTATION ALTS- >200K | Federal |
| TDTF | TRANS DISADV -TRUST FUND | State 100% |
| TDTF/TDDR | TRANS DISADV -TRUST FUND/DDR USE | State 100% |
| TM02 | EVERGLADES PARKWAY | Toll/Turnpike |
| TMBD | I-95 EXPRESS LANES | Toll/Turnpike |
| TMBG | I-75 ML TOLL MAINTENANCE | Toll/Turnpike |
| TO02 | EVERGLADES PARKWAY | Toll/Turnpike |
| TOBD | I-95 EXPRESS LANES | Toll/Turnpike |
| TOBF | I-595 | Toll/Turnpike |
| TOBG | I-75 ML TOLL OPERATIONS | Toll/Turnpike |
| TRIP | TRANS REGIONAL INCENTIVE PROGM | State 100% |
| TRWR | 2015 SB2514A-TRAN REG INCT PRG | State 100% |

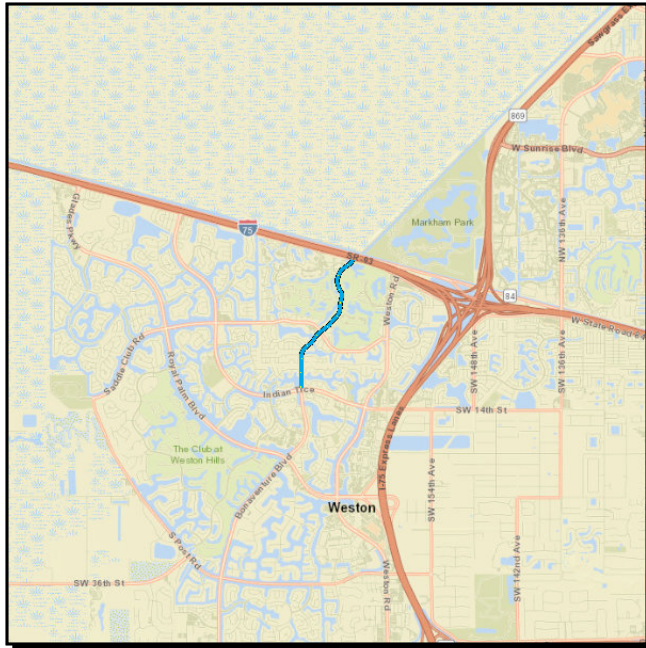
Phase Code Legend

| Phase Abbreviation | Phase Group |
|---------------------------|--------------------------|
| ADM | ADMINISTRATION |
| CAP | CAPITAL |
| CST | CONSTRUCTION |
| DSB | DESIGN BUILD |
| ENV | ENVIRONMENTAL |
| INC | CONTRACT INCENTIVES |
| MNT | BRDG/RDWY/CONTRACT MAINT |
| OPS | OPERATIONS |
| PDE | P D & E |
| PE | PRELIMINARY ENGINEERING |
| PLN | PLANNING |
| ROW | RIGHT OF WAY |
| RPY | REPAYMENTS |
| RRU | RAILROAD & UTILITIES |

Section 1 - HIGHWAYS

4439521 BONAVENTURE BLVD. FROM INDIAN TRACE TO SR-84

Non-SIS



Work Summary: BIKE LANE/SIDEWALK **From:**
To:
Lead Agency: CITY OF WESTON **Length:** 1.728
MTP Pg.: 5-30

| Phase | Fund Source | 2025 | 2026 | 2027 | 2028 | 2029 | Total |
|--------------|-------------|----------|------------------|----------|----------|----------|------------------|
| CST | SU | 0 | 2,681,189 | 0 | 0 | 0 | 2,681,189 |
| Total | | 0 | 2,681,189 | 0 | 0 | 0 | 2,681,189 |

Prior Year Cost: 451,031

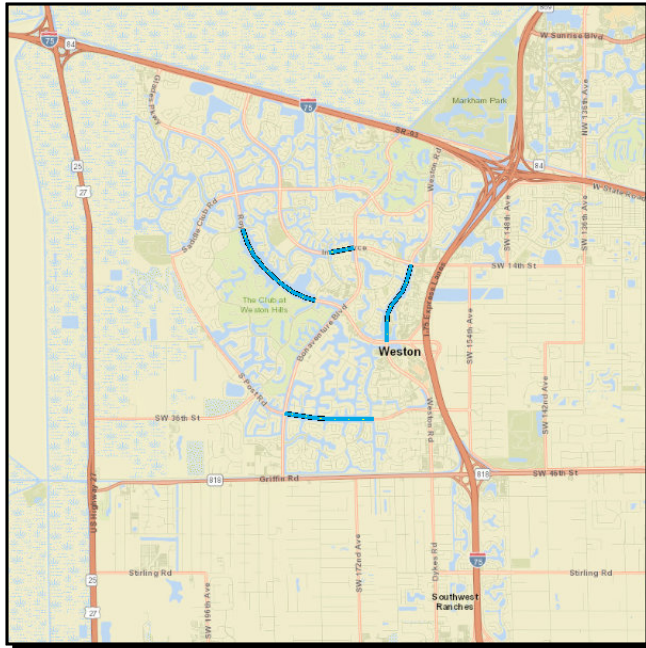
Future Year Cost:

Total Project Cost: 3,132,220

Project Description: 2021 MPO CSLIP PRIORITY #4 LAP WITH CITY OF WESTON PROVIDE 4'-5' WIDE BIKE LANES

4482881 CITY OF WESTON VARIOUS LOCATIONS

Non-SIS



Work Summary: SIDEWALK

From:

To:

Lead Agency: CITY OF WESTON

Length: 3.98

MTP Pg.: 5-30

| Phase | Fund Source | 2025 | 2026 | 2027 | 2028 | 2029 | Total |
|--------------|-------------|--------------|----------------|----------|----------|------------------|------------------|
| PE | SU | 2,500 | 787,881 | 0 | 0 | 0 | 790,381 |
| CST | LF | 0 | 0 | 0 | 0 | 1,480,475 | 1,480,475 |
| CST | SU | 0 | 0 | 0 | 0 | 3,139,414 | 3,139,414 |
| Total | | 2,500 | 787,881 | 0 | 0 | 4,619,889 | 5,410,270 |

Prior Year Cost:

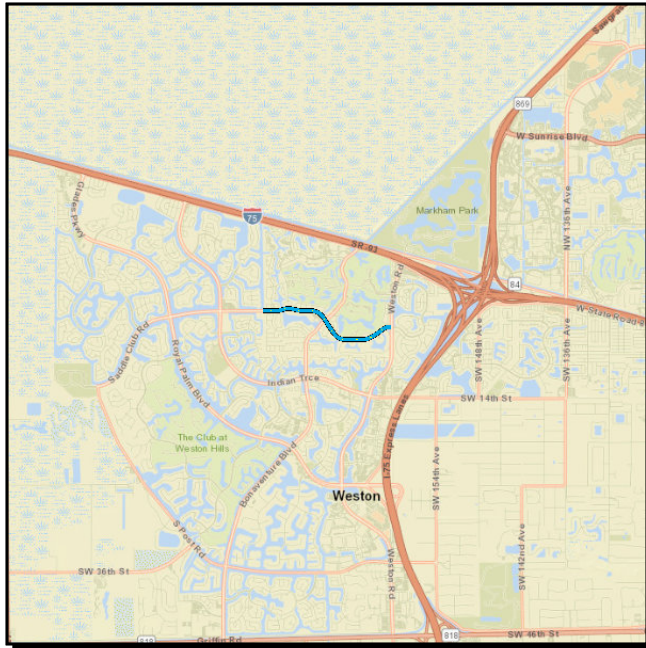
Future Year Cost:

Total Project Cost: 5,410,270

Project Description: 2024 MPO CSLIP PRIORITY #1 CYCLE 4.LAP W/ CITY OF WESTON INDIAN TRACE FROM TOWN CENTER BLVD TO BONAVENTURE BLVD; ROYAL PALM BLVD FROM WESTON HILLS DR TO TOWN CENTER BLVD; WESTON RD FROM INDIAN TRACE TO ROYAL PALM BLVD; SOUTH POST RD FROM BONAVENTURE BLVD TO WEST OF ENTERPRISE AVE

4455321 SADDLE CLUB ROAD FROM WEST OF LAKEVIEW DRIVE TO WESTON ROAD

Non-SIS



Work Summary: BIKE LANE/SIDEWALK **From:**
To:
Lead Agency: CITY OF WESTON **Length:** 1.767
MTP Pg.: 5-30

| Phase | Fund Source | 2025 | 2026 | 2027 | 2028 | 2029 | Total |
|--------------|-------------|----------------|----------|------------------|----------|----------|------------------|
| PE | TALU | 387,503 | 0 | 0 | 0 | 0 | 387,503 |
| CST | SU | 0 | 0 | 2,300,022 | 0 | 0 | 2,300,022 |
| Total | | 387,503 | 0 | 2,300,022 | 0 | 0 | 2,687,525 |

Prior Year Cost:

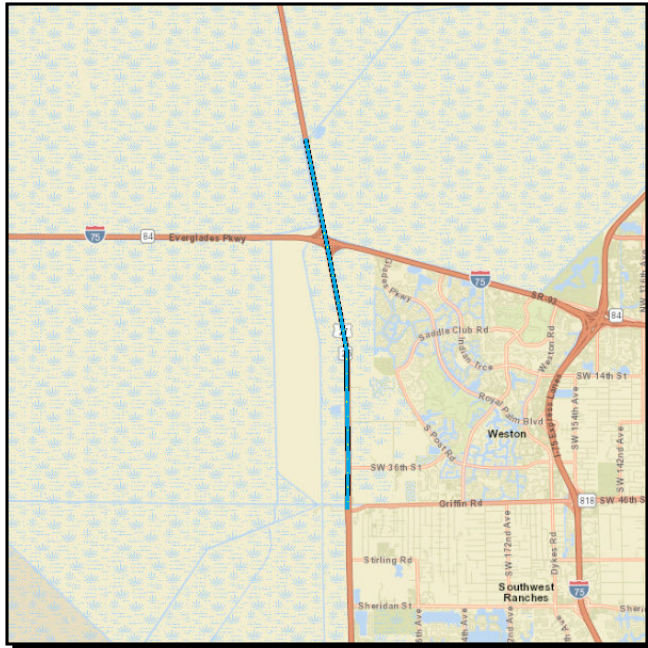
Future Year Cost:

Total Project Cost: 2,687,525

Project Description: 2021 MPO CSLIP PRIORITY #19 LAP WITH CITY OF WESTON

4498191 SR-25/US-27 FR N OF SR-818/GRIFFIN RD TO N OF SAWGRASS RECREATION PK

SIS



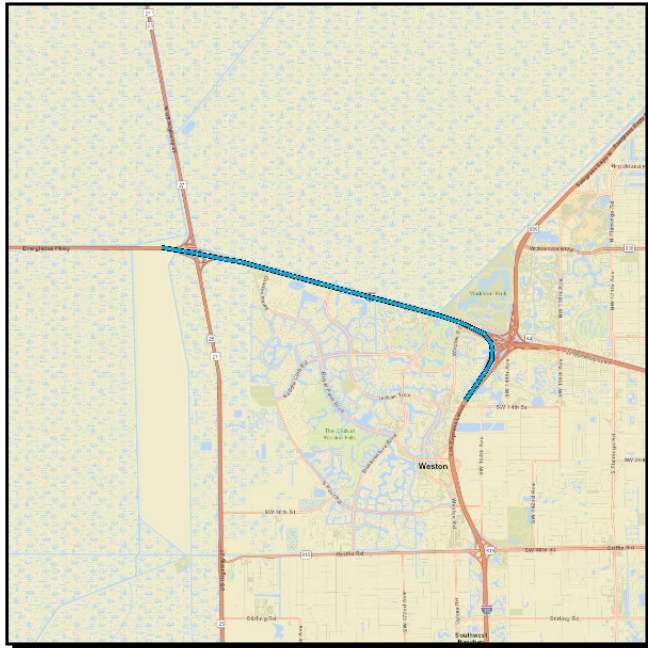
Work Summary: RESURFACING **From:**
To:
Lead Agency: FDOT **Length:** 8.17
MTP Pg.: 5-36

| Phase | Fund Source | 2025 | 2026 | 2027 | 2028 | 2029 | Total |
|--------------|-------------|----------|----------|-------------------|------------------|----------|-------------------|
| CST | DS | 0 | 0 | 3,433,631 | 0 | 0 | 3,433,631 |
| CST | DIH | 0 | 0 | 83,893 | 0 | 0 | 83,893 |
| CST | DDR | 0 | 0 | 6,532,888 | 1,000,000 | 0 | 7,532,888 |
| CST | ACNR | 0 | 0 | 7,684,477 | 0 | 0 | 7,684,477 |
| Total | | 0 | 0 | 17,734,889 | 1,000,000 | 0 | 18,734,889 |

Prior Year Cost: 2,875,373
Future Year Cost:
Total Project Cost: 21,610,262
Project Description: 52-02: LF TSM&O WITH BROWARD COUNTY

4510761 SR-93/I-75 FROM I-595/SR-869 TO SR-25/US-27

SIS



Work Summary: LIGHTING

From:

To:

Lead Agency: FDOT

Length: 7.67

MTP Pg.: 5-36

| Phase | Fund Source | 2025 | 2026 | 2027 | 2028 | 2029 | Total |
|--------------|-------------|----------------|----------|------------------|----------|----------|-------------------|
| PE | ACSS | 614,208 | 0 | 0 | 0 | 0 | 614,208 |
| CST | ACSS | 0 | 0 | 3,386,942 | 0 | 0 | 3,386,942 |
| CST | CM | 0 | 0 | 1,991,310 | 0 | 0 | 1,991,310 |
| CST | SA | 0 | 0 | 1,808,078 | 0 | 0 | 1,808,078 |
| CST | DDR | 0 | 0 | 2,743,017 | 0 | 0 | 2,743,017 |
| Total | | 614,208 | 0 | 9,929,347 | 0 | 0 | 10,543,555 |

Prior Year Cost: 734,806

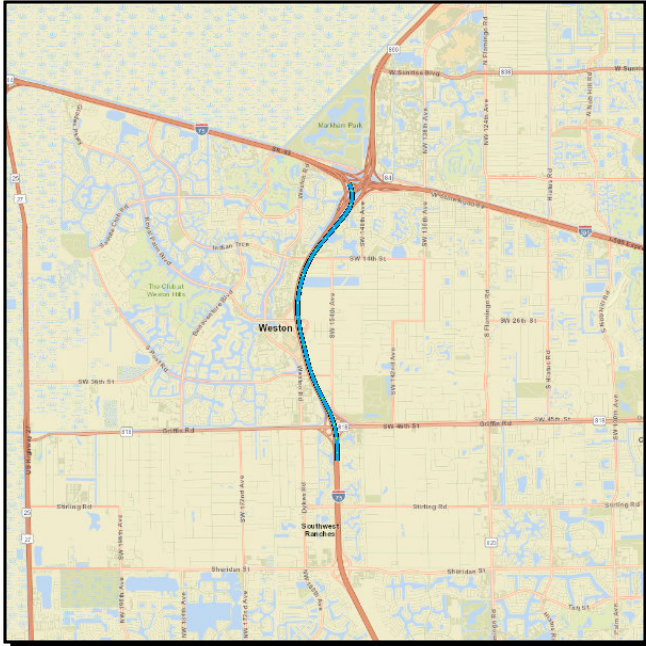
Future Year Cost:

Total Project Cost: 11,278,361

Project Description: B/C RATIO = 3.1 NPV \$5,235,562 SHSP EMPHASIS AREA(S): LANE DEPARTURE CRASHES EVALUATE THE NEED FOR ADDING SHIELDS TO LIGHT FIXTURES WEST INSTALL I-75 MAINLINE LIGHTING BETWEEN THE BRIDGE OVER WESTON RD AND EAST OF US-27 (EXCEPT NEAR GLADES PKWY) OF BONAVENTURE BLVD ...SEE WP45

4344771 SR-93/I-75 FROM SOUTH OF GRIFFIN RD TO SOUTH OF I-75/I-595 INTERCHANGE

SIS



Work Summary: LANDSCAPING

From:

To:

Lead Agency: FDOT

Length: 4.839

MTP Pg.: 5-36

| Phase | Fund Source | 2025 | 2026 | 2027 | 2028 | 2029 | Total |
|--------------|-------------|----------|----------------|---------------|------------------|----------|------------------|
| PE | DIH | 0 | 28,246 | 28,246 | 0 | 0 | 56,492 |
| PE | DDR | 0 | 598,140 | 0 | 0 | 0 | 598,140 |
| CST | DIH | 0 | 0 | 0 | 149,934 | 0 | 149,934 |
| CST | DDR | 0 | 0 | 0 | 4,696,592 | 0 | 4,696,592 |
| Total | | 0 | 626,386 | 28,246 | 4,846,526 | 0 | 5,501,158 |

Prior Year Cost:

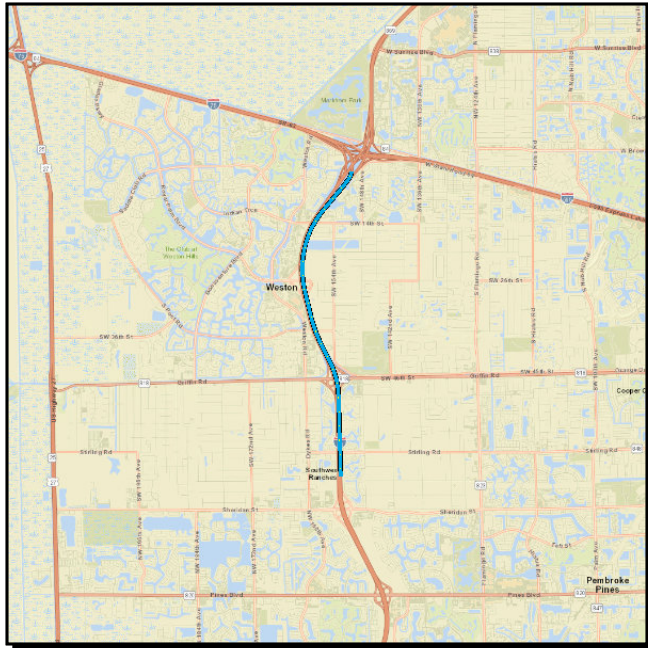
Future Year Cost:

Total Project Cost: 5,501,158

Project Description: BOLD LANDSCAPE ALSO INCLUDES GRIFFIN RD INTERCHANGE AND ROYAL PALM BLVD INTERCHANGE, AND INCLUDES NEW EB SR-84 SLIP RAMP LIMITS TO I-75 SB. COVERS LIMITS OF I-75 EXPRESS SEGMENTS B & E.

4413191 SR-93/I-75 FROM SR-823/SHERIDAN STREET TO SOUTH OF I-595

SIS



Work Summary: LANDSCAPING

From:

To:

Lead Agency: FDOT

Length: 5.698

MTP Pg.: 5-36

| Phase | Fund Source | 2025 | 2026 | 2027 | 2028 | 2029 | Total |
|--------------|-------------|---------------|------------------|----------|----------|----------|------------------|
| PE | DIH | 13,209 | 0 | 0 | 0 | 0 | 13,209 |
| CST | DIH | 0 | 82,362 | 0 | 0 | 0 | 82,362 |
| CST | DDR | 0 | 2,103,179 | 0 | 0 | 0 | 2,103,179 |
| Total | | 13,209 | 2,185,541 | 0 | 0 | 0 | 2,198,750 |

Prior Year Cost: 292,930

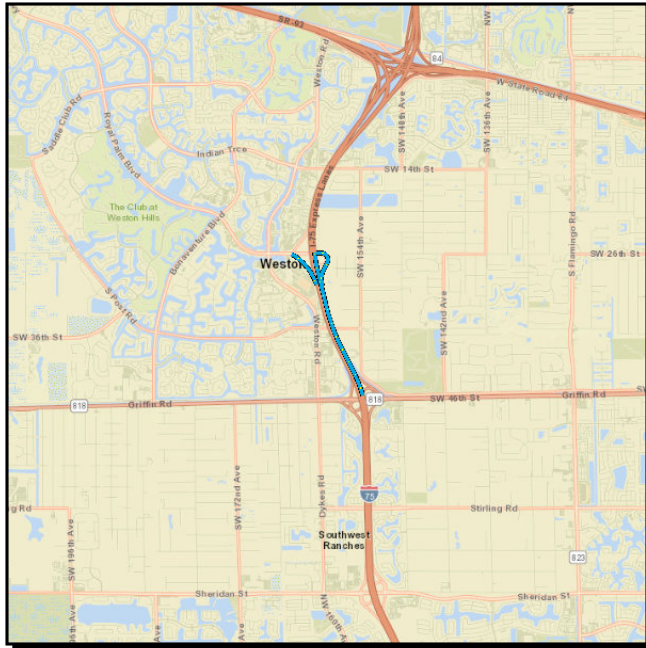
Future Year Cost:

Total Project Cost: 2,491,680

Project Description: STANDALONE INDEPENDENT PROJECT

4215486 SR-93/I-75 INTRCHNG @ROYAL PALM BLVD FR GRIFFIN RD TO ROYAL PALM BLVD

SIS



Work Summary: ADD LANES & RECONSTRUCT

From:

To:

Lead Agency: FDOT

Length: 2.795

MTP Pg.: 5-5

| Phase | Fund Source | 2025 | 2026 | 2027 | 2028 | 2029 | Total |
|--------------|-------------|-------------------|---------------|----------------|----------|----------|-------------------|
| CST | ACNP | 35,144,694 | 82,814 | 0 | 0 | 0 | 35,227,508 |
| INC | ACNP | 0 | 0 | 340,000 | 0 | 0 | 340,000 |
| Total | | 35,144,694 | 82,814 | 340,000 | 0 | 0 | 35,567,508 |

Prior Year Cost: 40,438

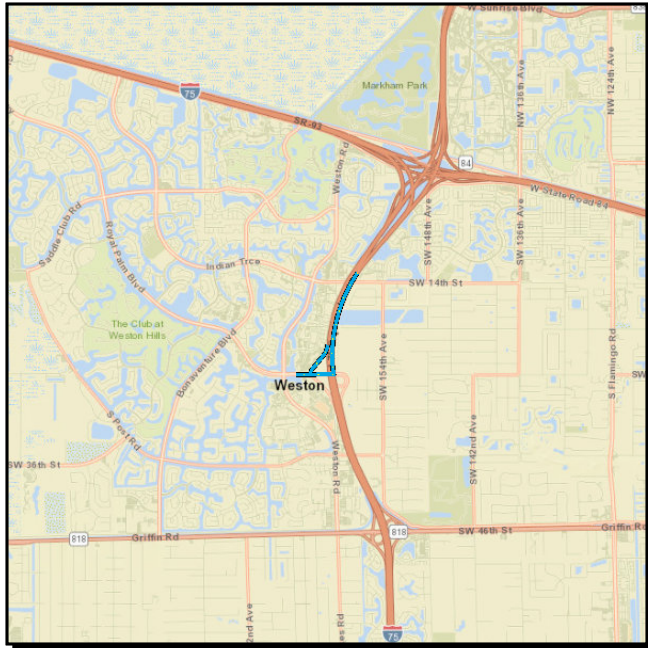
Future Year Cost:

Total Project Cost: 35,607,946

Project Description: ULTIMATE INTERCHANGE IMPROVEMENTS, PD&E STUDY UNDER 419343-1 INCLUDES BRIDGE #'S 860354 &860355, AUX LANES B/T GRIFFIN & ROYAL PALM, NB OFF RAMP; SB ON RAMP, LOCAL GOVERNMENT ADVANCEMENT APPROVED BY R. CONE ON 11/9/17 (SHIFTED FROM -1) LOCAL GOVT ADV APPVD BY A.BLACKBURN ON 10-18-18. DESIGN ON 421548-1; G/W 421548-7

4215487 SR-93/I-75 INTRCHNG @ROYAL PALM BLVD FR S ROYAL PALM BLV TO S SW 14 ST

SIS



Work Summary: ADD AUXILIARY LANE(S) From:

To:

Lead Agency: FDOT

Length: 1.961

MTP Pg.: 5-5

| Phase | Fund Source | 2025 | 2026 | 2027 | 2028 | 2029 | Total |
|--------------|-------------|------------------|---------------|----------|----------|----------|------------------|
| CST | ACNP | 8,772,436 | 22,718 | 0 | 0 | 0 | 8,795,154 |
| Total | | 8,772,436 | 22,718 | 0 | 0 | 0 | 8,795,154 |

Prior Year Cost: 3,963

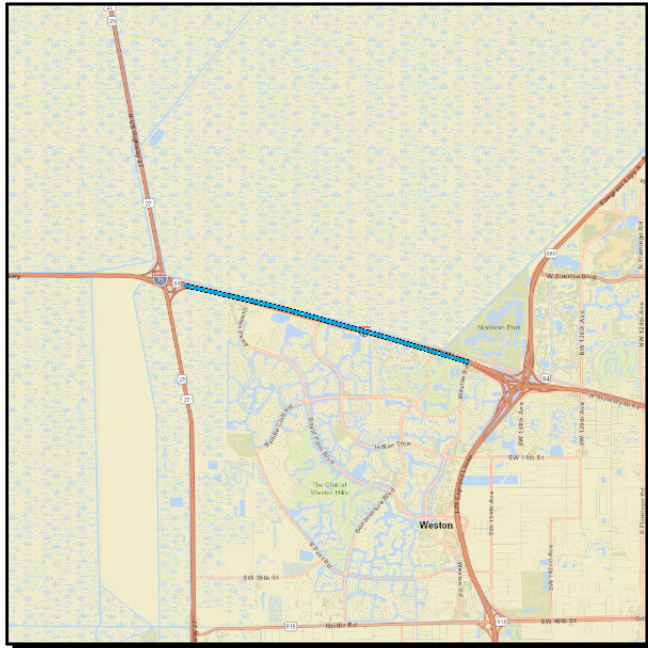
Future Year Cost:

Total Project Cost: 8,799,117

Project Description: ULTIMATE INTERCHANGE IMPROVEMENTS, PD&E STUDY UNDER 419343-1 INCLUDES; SB AUX LANE FROM ROYAL PALM TO INDIAN TRACE, SB OFF RAMP; DESIGN ON 421548-1; G/W: 421548-6

4534141 SR-93/I-75/ALLIGATOR ALLEY MASTER PLAN BROWARD COUNTY

SIS



Work Summary: FEASIBILITY STUDY

From:

To:

Lead Agency: FDOT

Length: 25.767

MTP Pg.: 5-36

| Phase | Fund Source | 2025 | 2026 | 2027 | 2028 | 2029 | Total |
|--------------|-------------|----------|----------------|------------------|------------------|----------|------------------|
| PDE | DSB2 | 0 | 500,000 | 1,000,000 | 0 | 0 | 1,500,000 |
| PE | DSB2 | 0 | 0 | 0 | 6,000,000 | 0 | 6,000,000 |
| Total | | 0 | 500,000 | 1,000,000 | 6,000,000 | 0 | 7,500,000 |

Prior Year Cost:

Future Year Cost: 17,646,410

Total Project Cost: 25,146,410

Project Description: