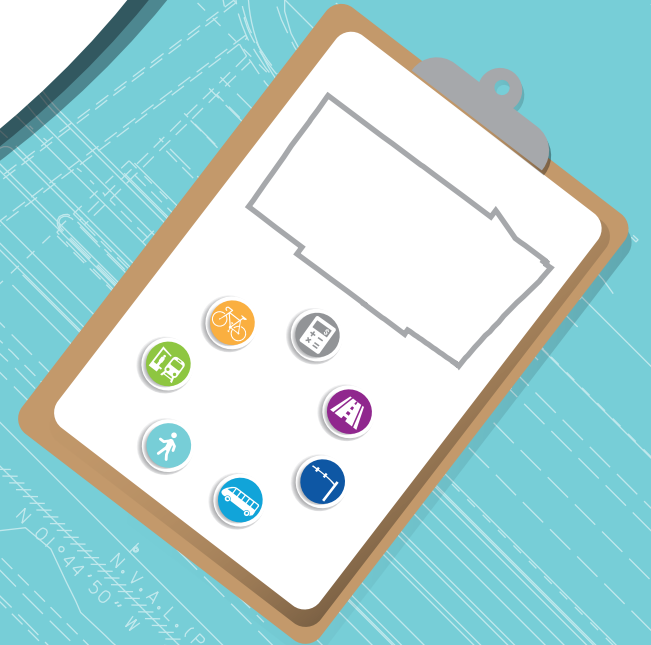


MULTIMODAL PRIORITIES LIST

Draft FY 2022 Priorities List (to be used in the development of the next TIP FY 2023)
4/9/2021



#MMPL

TABLE OF CONTENTS

1. Overview.....	1
2. Project Prioritization.....	5
3. Broward MPO Priority List.....	8
Unified Planning Work Program (UPWP).....	9
Complete Streets and other Localized Initiatives (CSLIP).....	11
Complete Streets Master Plan (CSMP).....	25
Mobility Hubs.....	37
Roadway.....	39
Systems Management/Safety.....	57
Transit.....	62
4. Florida's Turnpike Priority List.....	65



OVERVIEW

DEVELOPMENT

The Broward Metropolitan Planning Organization (MPO) is required to develop a Multimodal Priority List (MMPL) in coordination with Florida Department of Transportation (FDOT) District Four planning staff. The list is submitted to the District by August 1 annually [s.339.175 (8)(a) and (b), F.S.]. FDOT uses the MMPL to develop the Draft Tentative Work Program that is presented to the MPO each fall, which in turn is used to develop the following year's Transportation Improvement Program (TIP). The Fiscal Year (FY) 2022 MMPL is used to develop the FY 2023-2027 Draft Tentative Work Program and the FY 2023-2027 TIP.

The MMPL is a core product of the MPO that serves as a bridge between the MPO's Long Range Transportation Plan (LRTP)/Metropolitan Transportation Plan (MTP) and the TIP. Figure 1 shows the Broward MPO core product development process. The MMPL is used to set funding priorities for federal and state funds within our region. Only projects contained in the MTP are eligible for inclusion on the MMPL. Figure 2 presents the relationship among MTP, MMPL, and TIP.

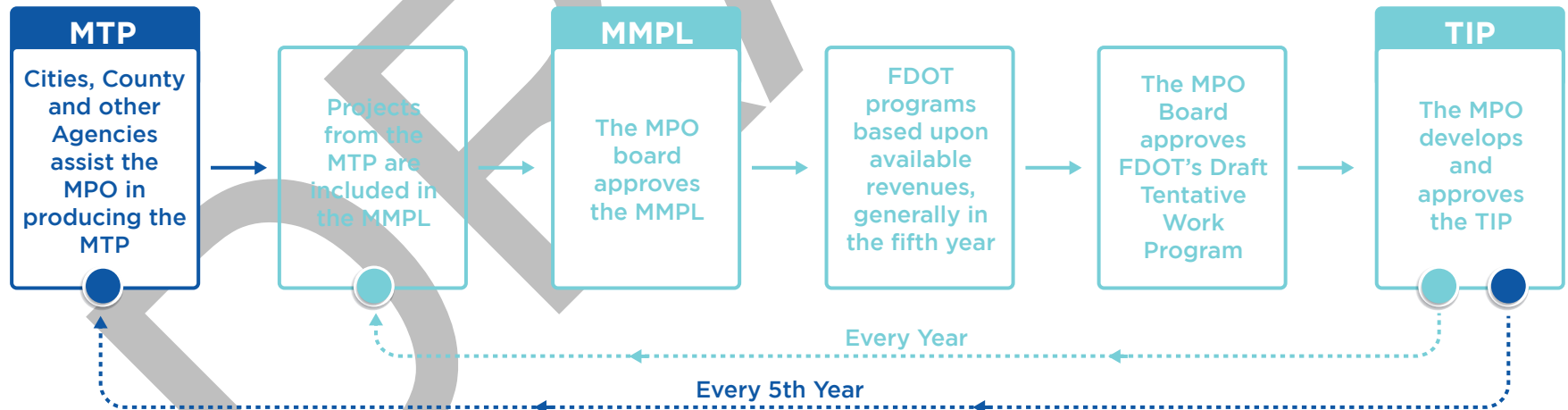


Figure 1 Core Product Development Process



Figure 2 Relationship among MTP, MMPL and TIP

The 2045 MTP was approved at the December 2019 MPO Board meeting. The Cost Feasible Plan, as a component of the MTP including a list of prioritized projects, was approved with it. The Cost Feasible Plan includes six funding programs in order to account for the region’s multimodal transportation needs. To be consistent with the 2045 MTP and the funding sources assumed in the financial plan of the 2045 MTP, the MMPL is organized by six funding programs. It utilizes the 2045 MTP’s allocations for the Broward MPO’s attributable funds as shown in Table 1.

Table 1 Programs and funding allocation

Program	Allocation
Highway/Roadway	20%
Transit	10%
Systems Management/Safety	15%
Complete Streets and other Localized Initiatives Program (CSLIP)	20%
Complete Streets Master Plan (CSMP)	25%
Mobility Hubs	10%
Total	100%

In addition, the MMPL assigns a preferred funding source for each prioritized project that is consistent with the 2045 MTP’s cost feasible plan. The funding sources are indicated as State, Federal, Local or any combination of the three. To facilitate project delivery, the MMPL emphasizes a “Program Ready” concept. “Program ready” means that a project includes a clear scope of work, approved resolution, cost estimate, and collaboration with partners. Projects that meet all of these four criteria are eligible for funding. For an example of how these concepts are illustrated in the MMPL, please refer to Figure 3.

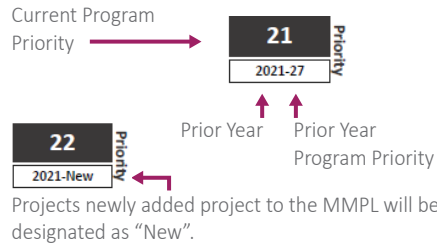
UNIFIED PLANNING WORK PROGRAM (UPWP)

Besides the six programs mentioned earlier, funding for the Broward MPO’s Unified Planning Work Program (UPWP)/budget is top priority. The MPO’s UPWP contains the agency’s Strategic Business Plan activities, planning efforts, and operating budget for a two-year period. The UPWP includes a description of the planning work and resulting products, who will perform the work, time frames for completing the work, the cost of the work, and the source(s) of funds. Further, the UPWP provides a comprehensive picture to citizens and stakeholders who wish to see how federal and state transportation planning dollars are to be spent by the Broward MPO, local governments, and transit agencies providing services to Broward. The UPWP is developed by MPO staff in consultation with partner agencies, municipal staff, and input from local citizens and stakeholders. The information collected is incorporated into the UPWP and budgeted accordingly. To support services that the MPO provides to the Broward region, the Broward MPO assigns Surface Transportation Program – Urban areas >200K (SU) funds to the UPWP. Available MPO attributable funds for the six programs excludes SU funds already allocated to UPWP.

HOW TO READ THE BROWARD MPO PRIORITY LIST

A

Priority



B

Project Characteristics

- Project Name with Limits
- Type of Work
- Description with Project Sponsor
- Proposed Study
- City
- Ownership
- LAP

C

Financial Information

- Phase
- Year Funds are Programmed
- Amount Funded
- Funding Needed
- Total Project Cost

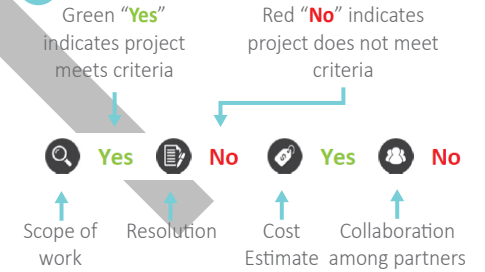
D

Funding Source

- State Funds
- Federal Funds
- Local Funds
- Sate and Local Funds
- State and Federal Funds
- Federal and Local Funds
- Federal, State, and Local Funds

E

Program Readiness



F

MTP Reference

- MTP Page Number
- MTP Timeframe:
 - 2021-2025 ← Indicates projects programmed in FDOT's Work Program
 - 2025
 - 2026-2030
 - 2031-2035
 - 2036-2045 ← Indicates MTP's final timeframe

Roadway							Roadway MPO Adopted Program Funding Goal 20%	
Phase	<2022	2022	2023	2024	2025	2026	Amount Funded	Funding Needed
07 Priority 2021-09 SW 130TH AVE FROM SW 8TH ST TO SR-84 - FM# 4463811 Type of Work: FEASIBILITY STUDY Proposed Study: Feasibility LAP: NO 2021 MPO HIGHWAY PRIORITY# 9 IS R/W NEEDED							Funding Source: FEDERAL MTP Page # 5-16 MTP Timeframe: 2026-2030	
PDE	0	0	0	0	500,000	0	500,000	0
PE	0	0	0	0	0	0	0	686,680
CST	0	0	0	0	0	0	0	5,394,800
Total	0	0	0	0	500,000	0	500,000	6,081,480
CITY: DAVIE OWNERSHIP: LOCAL							Total Project Cost Estimate: 6,581,480	
08 Priority 2021-10 SW 136TH AVE FROM SW 26TH ST TO SW 6TH CT - FM# 4463812 Type of Work: PD&E/EMO STUDY Proposed Study: PD&E LAP: NO 2021 MPO PRIORITY# 10 WIDEN 2 TO 4 LANES IS R/W NEEDED							Funding Source: FEDERAL MTP Page # 5-16 MTP Timeframe: 2026-2030	
PDE	0	0	0	0	500,000	1,750,000	2,250,000	0
PE	0	0	0	0	0	0	0	2,405,320
CST	0	0	0	0	0	0	0	13,206,000
Total	0	0	0	0	500,000	1,750,000	2,250,000	15,611,320
CITY: DAVIE OWNERSHIP: LOCAL							Total Project Cost Estimate: 17,861,320	
09 Priority 2021-11 SR-822/SHERIDAN STREET FROM DIXIE HIGHWAY TO SR-5/US 1 - FM# 4479221 Type of Work: PD&E/EMO STUDY Proposed Study: PD&E LAP: NO 2021 MPO PRIORITY# 11 IS R/W NEEDED							Funding Source: STATE MTP Page # 5-11 MTP Timeframe: 2025	
PDE	0	0	0	0	0	505,000	505,000	0
PE	0	0	0	0	0	0	0	941,147
ROW	0	0	0	0	0	0	0	38,332,475
CST	0	0	0	0	0	0	0	4,277,940
Total	0	0	0	0	0	505,000	505,000	43,551,562
CITY: DANIA BEACH/HOLLYWOOD OWNERSHIP: STATE							Total Project Cost Estimate: 44,056,562	

Figure 3 Sample of MMPL

PROJECT PRIORITIZATION

The 2035 LRTP established a new paradigm to provide a balanced transportation system with greater investments toward alternative modes such as transit, bicycle and pedestrian facilities, and smart growth policies. Both the Commitment 2040 and MTP 2045 follow this set standard. In order to guarantee that the transportation investments are balanced among the transportation modes, percentages agreed upon in the MTP 2045 by the MPO Board (during the MTP's development) were used to distribute revenue among the six programs. Projects within each program were prioritized according to criteria established for each individual program. The following describes the prioritization process for each of the six programs.

COMPLETE STREETS AND OTHER LOCALIZED INITIATIVES PROGRAM (CSLIP)

CSLIP provides funding for small local transportation projects that will improve safety and mobility for all transportation users. The MPO facilitates an annual competitive grant program to fund projects such as Complete Streets projects, traffic calming and intersection improvements, ADA compliance upgrades, bus shelters, bike racks, and technology advancements (e.g., transit signal priority and traffic control devices). Projects funded through this program are generally around \$2 million each.

CSLIP uses an objective tool to evaluate and rank the application submitted. This tool was developed with direction from the Board and uses several geographic datasets to score the projects. Evaluation criteria weights are 30% for safety, 24% for economic development, 23% for connectivity, and 23% for mobility.



For CSLIP details, please visit the CSLIP policies link at: https://browardmpo.org/images/WhatWeDo/CSLIP/Round_5_Policies.pdf and the evaluation chart at: http://www.browardmpo.org/images/WhatWeDo/CSLIP/EvaluationGraphic_Draft-v016.pdf



For CSMP details, please refer to the CSMP prioritization criteria link at: http://www.browardmpo.org/images/CSMP/CSMP_prioritization_criteria.pdf

COMPLETE STREETS MASTER PLAN (CSMP)

Complete streets are built for all users, emphasizing the safe and efficient movement of people including pedestrians, bicyclists, and transit riders. The MPO developed a CSMP to guide future investments by creating a prioritized list of projects based on technical, data-driven analysis and community input. Funding is allocated to this program based on the prioritized order established in the CSMP. Projects funded through this program are generally greater than \$2 million.

Prioritization is a process of scoring and ranking the Complete Streets projects and Super Connectors based on identified criteria or variables. The criteria is consistent with the goals and objectives established in the Commitment 2040 LRTP, continues in the Commitment 2045 MTP, and builds upon the format and content of the CSLIP evaluation criteria. The criteria between the two differ slightly but fit within the same theme.

ROADWAY & TRANSIT PROGRAMS

Funding for the roadway program is allotted to transportation improvements that increase roadway capacity by building new roadways, adding lanes to existing roadways, or building/expanding interchanges and major intersections. Funding may also be allocated to concept studies, preliminary engineering, and design to support the development of roadway capacity projects. The transit funding program includes transit capital investments such as transit vehicles, transit technology investments (e.g., fare collection equipment, automatic passenger counters, vehicle location, etc.), and roadway improvements designed to serve as exclusive lanes for transit services (for which operating funding has been identified).

Projects in the Roadway Program and Transit Program follow the same prioritization process established in the MTP 2045. The prioritization criteria is based upon the MTP's Goals and Objectives, adopted by the MPO Board on May 10, 2018, and the Performance Measures developed to ensure consistency with the FAST Act. These six measures, which are referred to as planning factors, were identified as best representing the MTP's Goals and Objectives they are: (1) Mobility: Providing high speed and reliable travel between major activity centers and destinations. The focus of mobility is to get from one place to another as quickly as possible and typically is characterized by longer trips. (2) Accessibility: Providing access and circulation within higher-density, mixed-use places; tend to be shorter trips. (3) Safety: Reducing the number and severity of crashes. (4) Equity: Ensuring that benefits and impacts are shared among Broward's population. (5) Environmental Stewardship: Protecting the natural and built environment. (6) Economic Vitality: Supporting economic activity and businesses.

Each of the six planning factors were given a weighted value to align it with its importance to the community. The weighting values were determined through an interactive polling process with the Technical Advisory Committee (TAC), the Citizens' Advisory Committee (CAC), and the MPO Board. The values obtained were averaged and resulted: Mobility – 20.5, Accessibility – 20.8, Safety – 18.7, Equity – 14.3, Environmental Stewardship – 12.8, and Economic Vitality – 13.0. Six matrixes with prioritization criteria were developed for each planning factor respectively. These matrixes include evaluation criteria, assessment scoring, and scoring guidelines. Through several discussions with the TAC and CAC, the prioritization criteria were revised and shown in tables 1 through 6 in the Technical Report #4 Project Prioritization Process.

Several key changes that resulted from this process were:

- The inclusion of additional Safety criteria to better reflect the importance of this issue;
- The addition of a positive criteria for projects that may improve environmental conditions;
- Clarifications to several criteria to ensure that both roadway and transit projects were evaluated; and
- Adjustments to the Sea Level Rise Mitigation criteria to account for projects that improve the resiliency of infrastructure to extreme weather, regardless of the project's location in a defined vulnerability area.

It is important to note that whereas this process has been developed for the 2045 MTP, these prioritization criteria and planning factor weightings can change over time as the Emphasis Areas stressed by the federal and state government change and local stakeholder preferences change. Future MTPs will address these changes with adjustments to these factors. In addition to an overall process, the Broward MPO project prioritization criteria were developed with the following considerations:

- Projects are to be evaluated regardless of their mode (roadway, transit, Transportation Systems Management and Operations (TSM&O), etc.).
- Scores are to be normalized to account for variance in maximum points awarded in each planning factor group.
- An initial recommendation of rounding negative scores to 0 was reconsidered at the TAC's request to better reflect the potential negative impacts of a project. Thus, negative scores are carried through.



SYSTEMS MANAGEMENT/SAFETY PROGRAM

Funding allocated to this program is to be focused on Transportation Systems Management and Operations (TSM&O), a program based on actively managing the multimodal transportation network, measuring performance, streamlining and improving the existing system, promoting effective cooperation/collaboration, and delivering positive safety and mobility outcomes to the traveling public. Example projects funded in this program include signal timing/coordination and major safety improvements. Funding in this program is also set aside to support studies to identify, prioritize, and implement safety improvements.


TSM&O projects on-state highway system were selected and prioritized by the FDOT. Safety improvement study projects were selected and prioritized according to the severity index as part of the Commitment 2045 MTP. The severity index is a measure that looks at total crashes and crash severity. It uses a weighted average (higher score for incapacitating and fatal crashes) to develop an index that ranks locations in terms of their importance for future safety analysis and improvements. The safety improvement projects identified through safety studies will be eligible for funding allocated to the Systems Management/Safety Program, as discussed previously. MPO staff are coordinating with FDOT District 4 and other local partners to lead these studies in the near future.

MOBILITY HUB PROGRAM

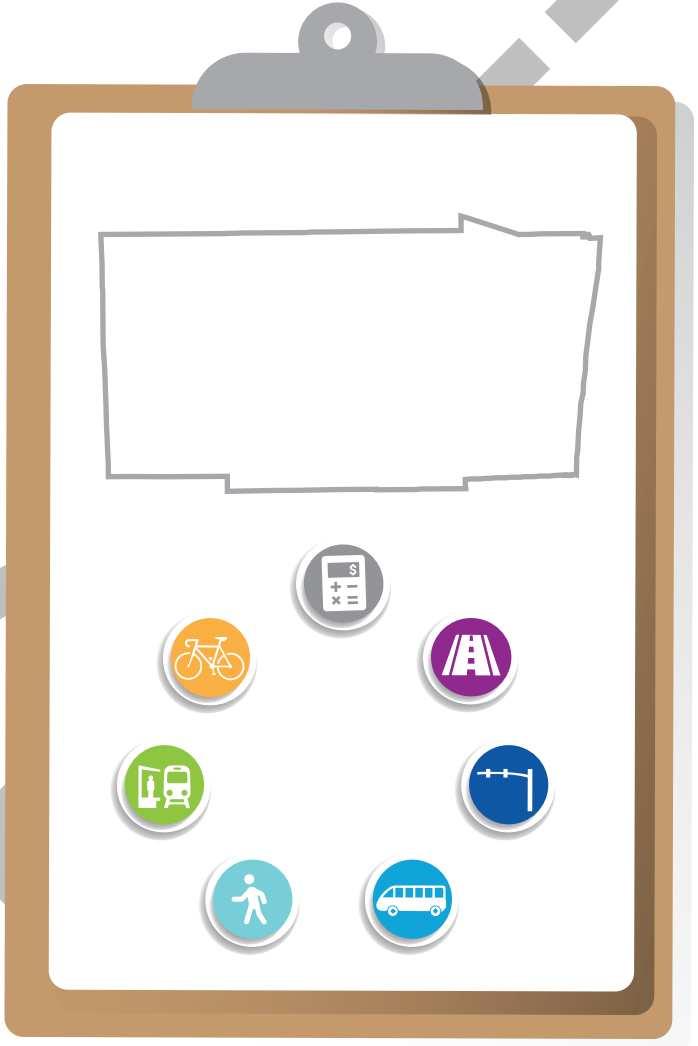
The Mobility Hub concept was initially introduced in the 2035 LRTP. The Mobility Hub program continues to be included in the 2040 LRTP and 2045 MTP. Mobility Hubs are transit access points with frequent transit service, high development potential, and a critical point for travel demand or transfers within the transit system. Funding through this program is available to help support the collaborative development of Mobility Hubs as communities identify and commit to opportunities that further the objectives of this program.

Prioritization of Mobility Hub projects is based on identified criteria or variables. Guided by the goals in the 2045 MTP, the recommended evaluation framework measures a candidate location's existing market and network readiness by incorporating the best available information into the evaluation matrix for review. The matrix includes measures of existing trip producers and attractors, potential trip producers, market ready attractors, existing transit ridership, and frequency. The prediction of theoretical future service would not be the driving factor for the evaluation although potential service is a consideration. The third factor in the evaluation is sponsor readiness, which is the willingness of the local government to support Mobility Hub investment.

 For Systems Management/Safety details, please refer to 2045 MTP at: <http://www.browardmpo.org/index.php/mtp-documents>

 For Mobility Hub details, please refer to the Revisit & Update Mobility Hubs Program - Assess Current Methodology Technical Memorandum link at: http://www.browardmpo.org/images/2-TM1-Mobility_Hubs_Revisit-Assess_Current_Methodology-January_2018_FINAL.pdf

BROWARD MPO PRIORITY LIST



UPWP

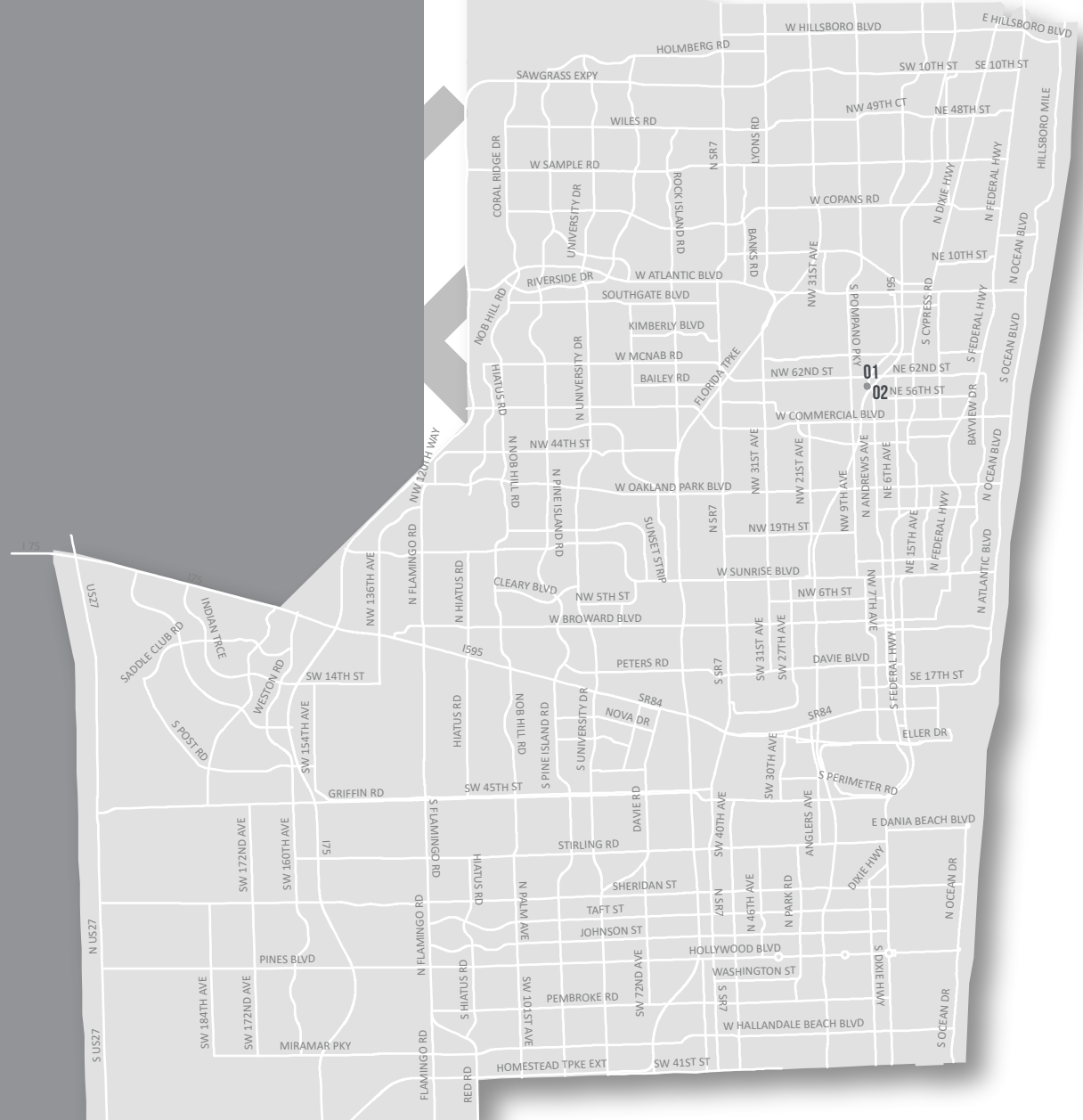
UNIFIED PLANNING WORK PROGRAM

PROGRAM

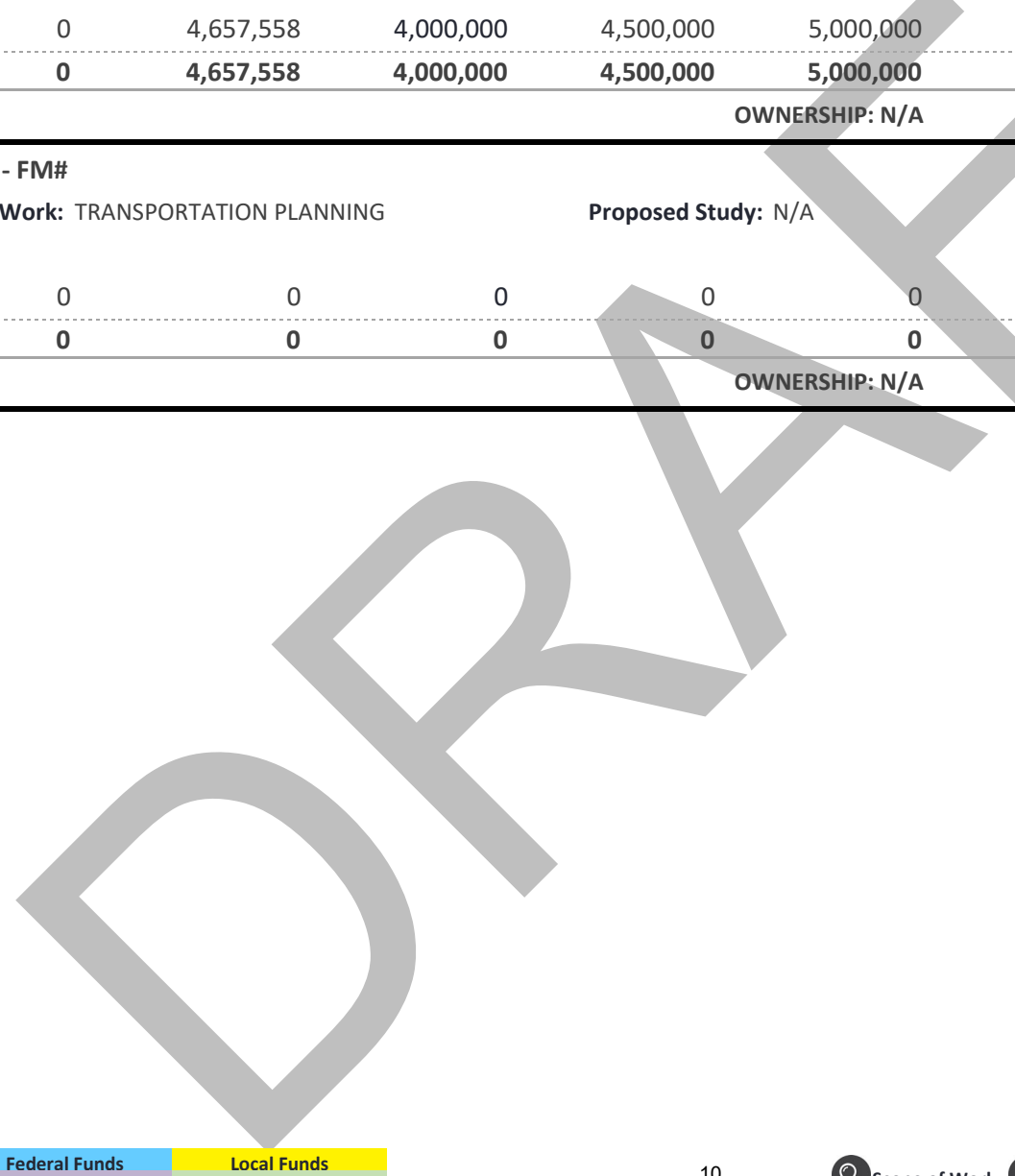


LEGEND:

 PRIORITIZED UPWP PROJECTS



Phase	<2022	2022	2023	2024	2025	2026	Amount Funded	Funding Needed		
01 Priority 2021-01	BROWARD MPO UPWP - FM# 439324-3-4-5						Funding Source: FEDERAL			
	Type of Work: TRANSPORTATION PLANNING			Proposed Study: N/A		LAP: N/A	Yes	Yes	Yes	Yes
	2021 MPO PRIORITY #1 ADDITIONAL 1M FROM 435174-1 FY21						MTP Page # 1-2		MTP Timeframe:	
PLN	0	4,657,558	4,000,000	4,500,000	5,000,000	5,000,000	23,157,558	5,500,000		
Total	0	4,657,558	4,000,000	4,500,000	5,000,000	5,000,000	23,157,558	5,500,000		
CITY: BROWARD MPO				OWNERSHIP: N/A		Annual Project Cost Estimate:		5,500,000		
02 Priority 2021-New	MTECC - FM#						Funding Source: FEDERAL			
	Type of Work: TRANSPORTATION PLANNING			Proposed Study: N/A		LAP: N/A	Yes	Yes	Yes	Yes
	2021 MPO PRIORITY #1 ADDITIONAL 1M FROM 435174-1 FY21						MTP Page # 1-2		MTP Timeframe:	
PLN	0	0	0	0	0	0	0	150,000		
Total	0	0	0	0	0	0	0	150,000		
CITY: BROWARD MPO				OWNERSHIP: N/A		Annual Project Cost Estimate:		150,000		



CSLIP

COMPLETE STREETS AND OTHER LOCALIZED INITIATIVES PROGRAM

PROGRAM



LEGEND:

 PRIORITIZED CSLIP PROJECTS



Phase	<2022	2022	2023	2024	2025	2026	Amount Funded	Funding Needed
-------	-------	------	------	------	------	------	---------------	----------------

01 2021-01	Priority	NW 1ST ST FROM BRYAN ROAD TO SR-5/US-1 - FM# 4439491					Funding Source: FEDERAL		
		Type of Work: BIKE LANE/SIDEWALK		Proposed Study: N/A		LAP: Yes	Yes	Yes	Yes
PROVIDE WIDER SIDEWALKS, BIKE LANES, ON-STREET PARKING, TRAFFIC CALMING, ENHANCED CROSSWALKS AND LIGHTING AND PEDESTRIAN CROSSING OF THE FEC RR ON NW 1ST FROM BRYAN BRYAN RD. TO SR-5/US-1. Temporally removed from Draft Tentative Work Program FY 2022 - 2026 because of LAP transitioning and anticipating to be brought back in the Draft Tentative Work Program FY 2023-2027							MTP Page # 5-3		MTP Timeframe:
ENV	0	0	0	0	0	0	0	30,000	
PE	0	0	0	0	0	0	0	477,001	
CST	0	0	0	0	0	0	0	2,401,761	
Total	0	0	0	0	0	0	0	2,908,762	
CITY: DANIA BEACH				OWNERSHIP: LOCAL			Total Project Cost Estimate: 2,908,762		

02 2021-02	Priority	ORANGE DRIVE FROM SW 92ND AVENUE TO SW 62ND AVENUE - FM# 4439501					Funding Source: FEDERAL		
		Type of Work: BIKE LANE/SIDEWALK		Proposed Study: N/A		LAP: Yes	Yes	Yes	Yes
PROVIDE 5 FT SIDEWALKS TO FILL IN EXISTING GAPS IN NETWORK CROSSWALKS, ADA CURB RAMPS AND PEDESTRIAN BRIDGE INCLUDED. Temporally removed from Draft Tentative Work Program FY 2022 - 2026 because of LAP transitioning and anticipating to be brought back in the Draft Tentative Work Program FY 2023-2027							MTP Page # 5-3		MTP Timeframe:
ENV	0	0	0	0	0	0	0	30,000	
PE	0	0	0	0	0	0	0	288,539	
CST	0	0	0	0	0	0	0	691,697	
Total	0	0	0	0	0	0	0	1,010,236	
CITY: DAVIE				OWNERSHIP: LOCAL			Total Project Cost Estimate: 1,010,236		

Phase	<2022	2022	2023	2024	2025	2026	Amount Funded	Funding Needed
-------	-------	------	------	------	------	------	---------------	----------------

03 2021-03	Priority	CITY OF LAUDERDALE LAKES TRAFFIC CALMING VARIOUS LOCATIONS - FM# 4439511					Funding Source: FEDERAL			
		Type of Work: MISCELLANEOUS CONSTRUCTION		Proposed Study: N/A		LAP: Yes	Yes	Yes	Yes	Yes
PROVIDE TRAFFIC CALMING DEVICES SUCH AS DECORATIVE PAVERS, SPEED BUMPS, PAVER CROSSWALKS, ISLAND AND ROUNDABOUT IN SEVERAL LOCATIONS THROUGHOUT THE CITY**SEE WP45** NW 24 ST. FROM SR-7 TO NW 34 AVE.;NW34 AVE. FROM NW 24 ST. TO NW 23 CT.; NW 23 CT. FROM NW 34 AVE. TO NW 32 TERR.NW32 TERR. FROM NW 23 CT. TO NW 21 ST.; NW 33 ST. FROM NW 46 AVE TO NW 43 AVE.; NW 43 AVE. FROM SR-816/OAKLAND PARK BLVD TO NWST.;NW 36 ST. FROM NW 43 AVE. TO SR-7;NW 34 ST. FROM SR-7 TO NW 33 AVE.; NW 35 AVE. FROM SR-816/OAKLAND PARK BLVD TO NW 37 AVE.;NW41 ST. FROM NW 52 AVE. TO NW 44 AVE.Temporally removed from Draft Tentative Work Program FY 2022 - 2026 because of LAP transitioning and anticipating to be brought back in the Draft Tentative Work Program FY 2023-2027							MTP Page # 5-3		MTP Timeframe:	
ENV	0	0	0	0	0	0	0	30,000		
PE	0	0	0	0	0	0	0	507,446		
CST	0	0	0	0	0	0	0	1,248,980		
Total	0	0	0	0	0	0	0	1,786,426		
CITY: LAUDERDALE LAKES				OWNERSHIP: LOCAL		Total Project Cost Estimate:		1,786,426		

04 2021-04	Priority	BONAVENTURE BLVD. FROM INDIAN TRACE TO SR-84 - FM# 4439521					Funding Source: FEDERAL			
		Type of Work: BIKE LANE/SIDEWALK		Proposed Study: N/A		LAP: Yes	Yes	Yes	Yes	Yes
PROVIDE 4'-5' WIDE BIKE LANES. Temporally removed from Draft Tentative Work Program FY 2022 - 2026 because of LAP transitioning and anticipating to be brought back in the Draft Tentative Work Program FY 2023-2027							MTP Page # 5-3		MTP Timeframe:	
ENV	0	0	0	0	0	0	0	30,000		
PE	0	0	0	0	0	0	0	516,000		
CST	0	0	0	0	0	0	0	2,339,256		
Total	0	0	0	0	0	0	0	2,885,256		
CITY: WESTON				OWNERSHIP: LOCAL		Total Project Cost Estimate:		2,885,256		

Phase	<2022	2022	2023	2024	2025	2026	Amount Funded	Funding Needed
-------	-------	------	------	------	------	------	---------------	----------------

05	Priority	CITY OF MIRAMAR COMPLETE STREETS PHASE IV - FM# 4439771					Funding Source: FEDERAL		
		2021-06	Type of Work: SIDEWALK		Proposed Study: N/A		LAP: Yes	Yes	Yes

PROVIDE SIDEWALKS, PEDESTRIAN LIGHTING, CROSSWALKS AND ADA-COMPLIANT RAMPS IN VARIOUS LOCATIONS *SEE WP45* SW 31 ST. FROM SW61 AVE. TO SW 62 AVE., SW 61 AVE. FROM SW30TH ST. TO SW 32 ST., SW 34 ST. FROM SW 62 AVE. TO SR-7, SW 39 ST. FROM 62 AVE. TO SR-7. Temporally removed from Draft Tentative Work Program FY 2022 - 2026 because of LAP transitioning and anticipating to be brought back in the Draft Tentative Work Program FY 2023-2027

MTP Page # 5-3 MTP Timeframe:

ENV	0	0	0	0	0	0	0	30,000
PE	0	0	0	0	0	0	0	438,016
CST	0	0	0	0	0	0	0	1,052,446
Total	0	0	0	0	0	0	0	1,520,462

CITY: MIRAMAR OWNERSHIP: LOCAL Total Project Cost Estimate: 1,520,462

06	Priority	SHADY BANKS AND TARPON RIVER NEIGHBORHOOD VARIOUS LOCATIONS - FM# 4439781					Funding Source: FEDERAL		
		2021-07	Type of Work: BIKE LANE/SIDEWALK		Proposed Study: N/A		LAP: Yes	Yes	Yes

PROVIDE SIDEWALK TO FILL IN MISSINGLINKS, PEDESTRIAN LIGHTING, TRAFFIC CALMING, AND ADA-COMPLIANT RAMPS IN VARIOUS LOCATIONS. Temporally removed from Draft Tentative Work Program FY 2022 - 2026 because of LAP transitioning and anticipating to be brought back in the Draft Tentative Work Program FY 2023-2027

MTP Page # 5-3 MTP Timeframe:

ENV	0	0	0	0	0	0	0	30,000
PE	0	0	0	0	0	0	0	355,610
CST	0	0	0	0	0	0	0	1,619,369
Total	0	0	0	0	0	0	0	2,004,979

CITY: FORT LAUDERDALE OWNERSHIP: LOCAL Total Project Cost Estimate: 2,004,979

Phase	<2022	2022	2023	2024	2025	2026	Amount Funded	Funding Needed
-------	-------	------	------	------	------	------	---------------	----------------

07 2021-12	Priority	UTOPIA DRIVE FROM RIVIERA BOULEVARD TO PEMBROKE ROAD - FM# 445241					Funding Source: FEDERAL			
		Type of Work: BIKE PATH/TRAIL		Proposed Study: N/A		LAP: Yes	Yes	Yes	Yes	Yes
SCOPE INCLUDE THE FOLLOWING: CONSTRUCTION OF 6FT WIDE MULTI- USE ASPHALT PATH ON THE LEFT SIDE OF THE ROAD; TWO PEDESTRIAN POLES TO BE REPLACED. Temporally removed from Draft Tentative Work Program FY 2022 - 2026 because of LAP transitioning and anticipating to be brought back in the Draft Tentative Work Program FY 2023-2027							MTP Page # 5-30		MTP Timeframe:	
ENV	0	0	0	0	0	0	0	30,000		
PE	0	0	0	0	0	0	0	291,000		
CST	0	0	0	0	0	0	0	596,475		
Total	0	0	0	0	0	0	0	917,475		

CITY: MIRAMAR OWNERSHIP: LOCAL Total Project Cost Estimate: 917,475

08 2021-14	Priority	NORTH 22ND/SW 12TH AVENUE FROM SHERIDAN STREET TO STIRLING ROAD - FM# 445261					Funding Source: FEDERAL			
		Type of Work: BIKE LANE/SIDEWALK		Proposed Study: N/A		LAP: Yes	Yes	Yes	Yes	Yes
SCOPE INCLUDE THE FOLLOWING: INSTALLATION OF PEDESTRIAN LEVEL LIGHTING AT BOTH SIDES; SHARROW BIKE FACILITY SIGNAGE AND TRAVEL LANE PAVEMENT MARKINGS; RAISED INTERSECTIONS TO PROVIDE FOR CROSSWALKS, DRAINAGE, AND DETECHABLE WARNINGS.. Temporally removed from Draft Tentative Work Program FY 2022 - 2026 because of LAP transitioning and anticipating to be brought back in the Draft Tentative Work Program FY 2023-2027							MTP Page # 5-30		MTP Timeframe:	
ENV	0	0	0	0	0	0	0	30,000		
PE	0	0	0	0	0	0	0	385,681		
CST	0	0	0	0	0	0	0	1,891,942		
Total	0	0	0	0	0	0	0	2,307,623		

CITY: HOLLYWOOD OWNERSHIP: LOCAL Total Project Cost Estimate: 2,307,623

Phase	<2022	2022	2023	2024	2025	2026	Amount Funded	Funding Needed
-------	-------	------	------	------	------	------	---------------	----------------

09 Priority **NORTHWEST 3RD STREET FROM NORTHWEST 6TH AVENUE TO DIXIE HIGHWAY - FM# 4455271** **Funding Source: FEDERAL**
2021-15 Priority **Type of Work: BIKE LANE/SIDEWALK** **Proposed Study: N/A** **LAP: Yes** **Yes** **Yes** **Yes** **Yes**

SCOPE INCLUDE THE FOLLOWING: COMPLETE STREET IMPROVEMENTS SUCH AS BIKE LANES; ON-STREET PARKING, CURB AND GUTTER, PEDESTRIAN LIGHTING AT BOTH SIDES, WIDER SIDEWALK, INCLUDE MINI ROUNDABOUT AND RAISED INTERSECTION. Temporally removed from Draft Tentative Work Program FY 2022 - 2026 because of LAP transitioning and anticipating to be brought back in the Draft Tentative Work Program FY 2023-2027

ENV	0	0	0	0	0	0	0	30,000
PE	0	0	0	0	0	0	0	421,000
CST	0	0	0	0	0	0	0	2,375,288
Total	0	0	0	0	0	0	0	2,826,288

CITY: HALLANDALE BEACH OWNERSHIP: LOCAL **Total Project Cost Estimate: 2,826,288**

10 Priority **CITY OF COCONUT CREEK VARIOUS LOCATIONS - FM# 4455281** **Funding Source: FEDERAL**
2021-16 Priority **Type of Work: BIKE PATH/TRAIL** **Proposed Study: N/A** **LAP: Yes** **Yes** **Yes** **Yes** **Yes**

VARIOUS LOCATIONS: JOHNSON ROAD FROM EAST OF US-441/SR-7 TO LYONS ROAD; PARK SCHOOL ROAD FROM LAKESIDE PARK TO JOHNSON ROAD 52-02: LFA WITH CITY OF COCONUT CREEK SCOPE INCLUDE THE FOLLOWING: SIDEWALK CONSTRUCTION ON THE LEFT SIDE OF JOHNSON RD. AND A MULTI-USE PATH ON THE LEFT SIDE OF PARK RD. Temporally removed from Draft Tentative Work Program FY 2022 - 2026 because of LAP transitioning and anticipating to be brought back in the Draft Tentative Work Program FY 2023-2027

ENV	0	0	0	0	0	0	0	30,000
PE	0	0	0	0	0	0	0	295,000
CST	0	0	0	0	0	0	0	787,881
Total	0	0	0	0	0	0	0	1,112,881

CITY: COCONUT CREEK OWNERSHIP: LOCAL **Total Project Cost Estimate: 1,112,881**

Phase	<2022	2022	2023	2024	2025	2026	Amount Funded	Funding Needed
-------	-------	------	------	------	------	------	---------------	----------------

11	Priority	CITY OF DEERFIELD BEACH VARIOUS LOCATIONS - FM# 445291					Funding Source: FEDERAL		
		2021-17	Type of Work: BIKE LANE/SIDEWALK		Proposed Study: N/A		LAP: Yes	Yes	Yes

VARIOUS LOCATIONS: NW 45TH STREET FROM NW 18TH TERRACE TO MILITARY TRAIL; CRYSTAL LAKE DR. FROM NW 45TH STREET TO MILITARY TRAIL. SCOPE INCLUDE THE FOLLOWING: SIDEWALKS ON BOTH SIDES AND SHARROWS; PEDESTRIAN LIGHTING T BOTH SIDES; ONE ROUNDABOUT AT CRYTAL LAKE DRIVE AND NW 45 STREET. Temporally removed from Draft Tentative Work Program FY 2022 - 2026 because of LAP transitioning and anticipating to be brought back in the Draft Tentative Work Program FY 2023-2027

ENV	0	0	0	0	0	0	0	30,000
PE	0	0	0	0	0	0	0	228,000
CST	0	0	0	0	0	0	0	2,047,829
Total	0	0	0	0	0	0	0	2,305,829

CITY: DEERFIELD BEACH OWNERSHIP: LOCAL **Total Project Cost Estimate: 2,305,829**

12	Priority	NORTHWEST 39TH STREET FROM CORAL RIDGE DRIVE TO NORTHWEST 110TH AVENUE - FM# 445311					Funding Source: FEDERAL		
		2021-18	Type of Work: BIKE LANE/SIDEWALK		Proposed Study: N/A		LAP: Yes	Yes	Yes

SCOPE INCLUDE THE FOLLOWING: BIKE LANES AND SIDEWALK ON BOTH SIDES AND NEW VALLEY GUTTER. Temporally removed from Draft Tentative Work Program FY 2022 - 2026 because of LAP transitioning and anticipating to be brought back in the Draft Tentative Work Program FY 2023-2027

ENV	0	0	0	0	0	0	0	30,000
PE	0	0	0	0	0	0	0	280,000
CST	0	0	0	0	0	0	0	1,689,157
Total	0	0	0	0	0	0	0	1,999,157

CITY: CORAL SPRINGS OWNERSHIP: LOCAL **Total Project Cost Estimate: 1,999,157**

Phase	<2022	2022	2023	2024	2025	2026	Amount Funded	Funding Needed		
13 Priority 2021-19	SADDLE CLUB ROAD FROM WEST OF LAKEVIEW DRIVE TO WESTON ROAD - FM# 4455321						Funding Source: FEDERAL			
	Type of Work: BIKE LANE/SIDEWALK		Proposed Study: N/A		LAP: Yes		Yes	Yes	Yes	Yes
SCOPE INCLUDE THE FOLLOWING: ADDITIONAL BIKELANES AT BOTH SIDES AND LANE WIDTH REDUCTION. Temporally removed from Draft Tentative Work Program FY 2022 - 2026 because of LAP transitioning and anticipating to be brought back in the Draft Tentative Work Program FY 2023-2027							MTP Page # 5-30		MTP Timeframe:	
ENV	0	0	0	0	0	0	0	30,000		
PE	0	0	0	0	0	0	0	384,000		
CST	0	0	0	0	0	0	0	2,013,173		
Total	0	0	0	0	0	0	0	2,427,173		
CITY: WESTON				OWNERSHIP: LOCAL		Total Project Cost Estimate:		2,427,173		

14 Priority 2021-20	NORTHWEST 94TH AVENUE FROM NORTHWEST 44TH STREET TO 57TH STREET - FM# 4455331						Funding Source: FEDERAL			
	Type of Work: BIKE LANE/SIDEWALK		Proposed Study: N/A		LAP: Yes		Yes	Yes	Yes	Yes
SCOPE INCLUDE THE FOLLOWING: PRESERVE INSIDE TRAVEL LANE AND LEFT TURN LANE; RE-STRIPE OUTSIDE TRAVEL LANE TO BE A 6FT BIKE LANE WITH 3 FT BUTTER; LANE ELIMINATION; PROVIDE 500LF OF ROAD WIDENING; MILL AND RESURFACE. Temporally removed from Draft Tentative Work Program FY 2022 - 2026 because of LAP transitioning and anticipating to be brought back in the Draft Tentative Work Program FY 2023-2027							MTP Page # 5-30		MTP Timeframe:	
ENV	0	0	0	0	0	0	0	30,000		
PE	0	0	0	0	0	0	0	203,000		
CST	0	0	0	0	0	0	0	1,043,290		
Total	0	0	0	0	0	0	0	1,276,290		
CITY: SUNRISE				OWNERSHIP: LOCAL		Total Project Cost Estimate:		1,276,290		

Phase	<2022	2022	2023	2024	2025	2026	Amount Funded	Funding Needed		
15	CITY OF HOLLYWOOD - VARIOUS LOCATIONS - FM# 4455341						Funding Source: FEDERAL			
2021-21	Type of Work: SIDEWALK		Proposed Study: N/A			LAP: Yes	Yes	Yes	Yes	Yes
SR7 SHERIDAN PARK AND HWY ACRES SIDEWALKPROJECT; PROVIDE SIDEWALK CONNECTIVITY AT APPROX. 24 LOCATIONS. Temporally removed from Draft Tentative Work Program FY 2022 - 2026 because of LAP transitioning and anticipating to be brought back in the Draft Tentative Work Program FY 2023-2027										
ENV	0	0	0	0	0	0	0	30,000		
PE	0	0	0	0	0	0	0	273,000		
CST	0	0	0	0	0	0	0	1,457,378		
Total	0	0	0	0	0	0	0	1,760,378		
CITY: HOLLYWOOD				OWNERSHIP: LOCAL			Total Project Cost Estimate:		1,760,378	
16	SHERMAN CIRCLE FROM JODI LANE TO JODI LANE - FM# 4455351						Funding Source: FEDERAL			
2021-22	Type of Work: BIKE PATH/TRAIL		Proposed Study: N/A			LAP: Yes	Yes	Yes	Yes	Yes
SHERMAN CIRCLE BEGIN AND END AT THE SAME POINT.SCOPE INCLUDE THE FOLLOWING: 10FT WIDE MULTI-USE PATH ON THE INNER SIDE OF THE CIRCLE; WIDENING OFF EXISTING SIDEWALK;PEDESTRIAN LIGHTING Temporally removed from Draft Tentative Work Program FY 2022 - 2026 because of LAP transitioning and anticipating to be brought back in the Draft Tentative Work Program FY 2023-2027										
ENV	0	0	0	0	0	0	0	30,000		
PE	0	0	0	0	0	0	0	343,000		
CST	0	0	0	0	0	0	0	1,802,113		
Total	0	0	0	0	0	0	0	2,175,113		
CITY: MIRAMAR				OWNERSHIP: LOCAL			Total Project Cost Estimate:		2,175,113	
17	NW 21st Avenue from NW 26th Street to Commercial Boulevard - FM# 4481061						Funding Source: FEDERAL			
2021-23	Type of Work: Bike Lanes, Sidewalk, Traffic Calming		Proposed Study: N/A			LAP: Yes	Yes	No	Yes	Yes
Cycle 4. Remove bidirectional turn lanes, install landscape medians, install irrigation sleeves, mill and resurface, new striping and associated signage, and apply green surface treatment to bike lanes.										
PE,ENV, CEI,CST	0	0	0	0	0	0	0	2,249,521		
Total	0	0	0	0	0	0	0	2,249,521		
CITY: OAKLAND PARK				OWNERSHIP: COUNTY			Total Project Cost Estimate:		2,249,521	

Phase	<2022	2022	2023	2024	2025	2026	Amount Funded	Funding Needed		
18 Priority	SW 52nd Avenue from West Hallandale Beach Boulevard to County Line and South Park Road from West Hallandale Beach Boulevard to Pembroke Road - FM# 4482871						Funding Source: FEDERAL			
2021-24	Type of Work: Bike Lanes, Sidewalk, Resurfacing			Proposed Study: N/A		LAP: Yes	Yes	No	Yes	Yes
Cycle 4. New bike paths located along the east and west sides of SW 52nd Avenue and on the east side of S. Park Road, construction of missing sections of sidewalks, drainage adjustment for lost swale areas, and resurfacing to adjust road grades.							MTP Page # 5-30	MTP Timeframe:		
PE,ENV, CEI,CST	0	0	0	0	0	0	0	3,164,242		
Total	0	0	0	0	0	0	0	3,164,242		
CITY: PEMBROKE PARK				OWNERSHIP: LOCAL			Total Project Cost Estimate: 3,164,242			
19 Priority	City-wide Sidewalk and ADA - FM# 4482881						Funding Source: FEDERAL			
2021-25	Type of Work: Pedestrian Facilities			Proposed Study: N/A		LAP: Yes	Yes	Yes	Yes	Yes
Cycle 4. Indian Trace(north) from Town Center Blvd to Bonaventure Blvd, Royal Palm Blvd(south) from Weston Hills Dr to Town Center Blvd, Weston Rd(west) from Indian Trace to Royal Palm Blvd, and South Post Rd(north) from Bonaventure Blvd to west of Enterprise Ave. Construction of ADA pedestrian facilities at multiple locations throughout the City of Weston to improve pedestrian connectivity, safety and accessibility to existing transit stops.							MTP Page # 5-30	MTP Timeframe:		
PE,ENV, CEI,CST	0	0	0	0	0	0	0	4,759,236		
Total	0	0	0	0	0	0	0	4,759,236		
CITY: WESTON				OWNERSHIP: LOCAL			Total Project Cost Estimate: 4,759,236			
20 Priority	SW 81ST AVE from C-14 Greenway South to McNab Road - FM# 4482891						Funding Source: FEDERAL			
2021-26	Type of Work: Bike/Ped Facilities			Proposed Study: N/A		LAP: Yes	Yes	Yes	Yes	Yes
Cycle 4. Multiuse path along S.W. 81st Avenue from McNab Road to north of Southgate Boulevard to accommodate pedestrian and bicyclist to connect with the existing C-14 Greenway.							MTP Page # 5-30	MTP Timeframe:		
PE,ENV, CEI,CST	0	0	0	0	0	0	0	2,593,606		
Total	0	0	0	0	0	0	0	2,593,606		
CITY: NORTH LAUDERDALE				OWNERSHIP: LOCAL			Total Project Cost Estimate: 2,593,606			

Phase	<2022	2022	2023	2024	2025	2026	Amount Funded	Funding Needed	
21 Priority	Honey Hill RD from Flamingo Road to Red Road - FM# 4482901						Funding Source: FEDERAL		
2021-27	Type of Work: Bike/Ped Facilities		Proposed Study: N/A		LAP: Yes		Yes No Yes Yes		
Cycle 4. Construct 8-foot wide shared asphalt path for bicycles and pedestrians and pedestrian lighting between Flamingo Road and Red Road. Miramar will have to construct the "Mobility Hub" portion of the project as a separate project if funded.							MTP Page # 5-30		MTP Timeframe:
PE,ENV, CEI,CST	0	0	0	0	0	0	0	1,190,776	
Total	0	0	0	0	0	0	0	1,190,776	
CITY: MIRAMAR				OWNERSHIP: LOCAL		Total Project Cost Estimate: 1,190,776			
22 Priority	City-Wide Sidewalk Improvements in the City of Lauderdale Lakes - FM#						Funding Source: FEDERAL		
2021-New	Type of Work: ADA, Sidewalk		Proposed Study: N/A		LAP: Yes		Yes Yes Yes Yes		
Cycle 5. Construction of ADA compliant new sidewalks at NW 52 Av from Oakland Park Blvd to NW 36 St; NW 43 Ct. from NW 41 St to NW 48 Ave; NW 21 St. from SR-7 to Willie Webb Park; NW 29 St. and NW 33 Ave at various locations; NW 37 St at various locations; NW 24 Ct at various locations. Project Sponsor: Lauderdale Lakes							MTP Page # 5-30		MTP Timeframe:
PE,ENV, CEI,CST	0	0	0	0	0	0	0	1,067,414	
Total	0	0	0	0	0	0	0	1,067,414	
CITY: LAUDERDALE LAKES				OWNERSHIP: LOCAL		Total Project Cost Estimate: 1,067,414			
23 Priority	Various Locations in Hollywood's Gracewood Neighborhood - FM#						Funding Source: FEDERAL		
2021-New	Type of Work: ADA, Drainage, Sidewalk		Proposed Study: N/A		LAP: Yes		Yes Yes Yes Yes		
Cycle 5. Construct new 5'-0" wide concrete sidewalk with curb ramps to fill-in and connect to existing sidewalks within the Gracewood neighborhood. Proposed sidewalks will be installed at various location within the boundaries of Johnson St to the North, Hollywood Blvd to the South, SR7 to the East, and N 64th Ave to the West. Project Sponsor: Hollywood							MTP Page # 5-30		MTP Timeframe:
PE,ENV, CEI,CST	0	0	0	0	0	0	0	2,385,674	
Total	0	0	0	0	0	0	0	2,385,674	
CITY: HOLLYWOOD				OWNERSHIP: LOCAL		Total Project Cost Estimate: 2,385,674			

Phase	<2022	2022	2023	2024	2025	2026	Amount Funded	Funding Needed		
24 <small>Priority</small>	Cypress Road, Gatehouse Road, and New River Canal Sidewalks - FM#						Funding Source: FEDERAL			
2021-New <small>Priority</small>	Type of Work: Sidewalk		Proposed Study: N/A		LAP: Yes		Yes	Yes	Yes	Yes
Cycle 5. Construct sidewalks at Cypress Road from the Holloway Canal to N. Fig Tree Lane, Gatehouse Road from Cocoplum to Pine Island Road New Rive Canal Road, and New River Canal Road from Pine Island to the 9000 block of Mockingbird Lane. Project Sponsor: Plantation										
PE,ENV, CEI,CST	0	0	0	0	0	0	0	1,046,943		
Total	0	0	0	0	0	0	0	1,046,943		
CITY: PLANTATION				OWNERSHIP: LOCAL		Total Project Cost Estimate:		1,046,943		
25 <small>Priority</small>	NE 12th Terr Roadway Improvement Project - FM#						Funding Source: FEDERAL			
2021-New <small>Priority</small>	Type of Work: ADA, Bicycle Lanes, Drainage, Landscape, Lighting		Proposed Study: N/A		LAP: Yes		Yes	Yes	Yes	Yes
Cycle 5. Construct pedestrian facilities as well widening for the installation of bicycle facilities along NE 12th Terrace from Floranada Road to NE 40th Place and Oakland Park Boulevard to City Limits/Middle River. Project Sponsor: Oakland Park										
PE,ENV, CEI,CST	0	0	0	0	0	0	0	1,905,282		
Total	0	0	0	0	0	0	0	1,905,282		
CITY: OAKLAND PARK				OWNERSHIP: LOCAL		Total Project Cost Estimate:		1,905,282		
26 <small>Priority</small>	NE 15th Avenue Complete Streets Project - FM#						Funding Source: FEDERAL			
2021-New <small>Priority</small>	Type of Work: Access Management, ADA, Bicycle Lanes, Crosswalk,		Proposed Study: N/A		LAP: Yes		Yes	Yes	Yes	Yes
Cycle 5. Construct bike lanes, new and enhanced crosswalks, new and extended medians, raised intersections, and turning movement organization along NE 15th Avenue from Sunrise Boulevard to City Limits/Middle River Project Sponsor: Fort Lauderdale										
PE,ENV, CEI,CST	0	0	0	0	0	0	0	1,655,043		
Total	0	0	0	0	0	0	0	1,655,043		
CITY: FORT LAUDERDALE				OWNERSHIP: LOCAL		Total Project Cost Estimate:		1,655,043		

Phase	<2022	2022	2023	2024	2025	2026	Amount Funded	Funding Needed		
27 <small>Priority</small>	Security Cameras at Broward Tri-Rail Stations - FM#						Funding Source: FEDERAL			
2021-New	Type of Work: Information Management			Proposed Study: N/A		LAP: No	Yes	Yes	Yes	Yes
Cycle 5. Install safety & security camera technology in Tri-Rail station facilities to respond quickly to threats, protect passengers, facilities, SIS infrastructure, & improve disaster planning and recovery. Improvements will take place at all Broward Tri-Rail Stations: Hollywood, Sheridan St., FLL Airport/Dania Beach, Ft Lauderdale, Cypress Creek, Pompano Beach, and Deerfield Beach Project Sponsor: SFRTA							MTP Page # 5-30		MTP Timeframe:	
PE,ENV, CEI,CST	0	0	0	0	0	0	0	794,283		
Total	0	0	0	0	0	0	0	794,283		
CITY: SFRTA				OWNERSHIP: STATE			Total Project Cost Estimate: 794,283			
28 <small>Priority</small>	City-Wide Bus Shelters - FM#						Funding Source: FEDERAL			
2021-New	Type of Work: ADA, Bicycle Rack, Bus Shelter			Proposed Study: N/A		LAP: Yes	Yes	Yes	Yes	Yes
Cycle 5. Renovate the following 10 bus shelters: Stop ID 4050, 2068, 3595, 5049, 5655, 2742, 5260, 5257, 5654, 2740. Project Sponsor: Sunrise							MTP Page # 5-30		MTP Timeframe:	
PE,ENV, CEI,CST	0	0	0	0	0	0	0	1,397,979		
Total	0	0	0	0	0	0	0	1,397,979		
CITY: SUNRISE				OWNERSHIP: LOCAL			Total Project Cost Estimate: 1,397,979			
29 <small>Priority</small>	Miramar Pkwy Complete Streets Phase 1 - FM#						Funding Source: FEDERAL			
2021-New	Type of Work: Bicycle Lanes			Proposed Study: N/A		LAP: Yes	Yes	Yes	Yes	Yes
Cycle 5. Construction of (7) foot buffered bike lanes on both sides with new asphalt and striping along Miramar Parkway between Flamingo Road and Red Road. Project Sponsor: Miramar							MTP Page # 5-30		MTP Timeframe:	
PE,ENV, CEI,CST	0	0	0	0	0	0	0	1,777,917		
Total	0	0	0	0	0	0	0	1,777,917		
CITY: MIRAMAR				OWNERSHIP: LOCAL			Total Project Cost Estimate: 1,777,917			

Phase	<2022	2022	2023	2024	2025	2026	Amount Funded	Funding Needed	
30	Trailhead Linear Park Extension / SR-845 - FM#						Funding Source: STATE		
2021-New	Type of Work: Crosswalk, Lighting pedestrian, MultiUse Path Proposed Study: N/A						LAP: No Yes Yes Yes Yes		
Cycle 5. Construction of wide shared-use path and pedestrian lighting upgrades on Powerline Road from Trail Head Linear Park to the Entrance of Quiet Waters Park at West Drive Project Sponsor: Deerfield Beach							MTP Page # 5-30		MTP Timeframe:
PE,ENV, CEI,CST	0	0	0	0	0	0	0	3,200,185	
Total	0	0	0	0	0	0	0	3,200,185	
CITY: DEERFIELD BEACH				OWNERSHIP: STATE			Total Project Cost Estimate:		3,200,185

DRAFT

CSMP

COMPLETE STREETS MASTER PLAN

PROGRAM



LEGEND:

 PRIORITIZED CSMP PROJECTS



Phase	<2022	2022	2023	2024	2025	2026	Amount Funded	Funding Needed		
01	SR-817/UNIVERSITY DRIVE FR S. OF SR-848/STIRLING RD TO N. OF SW 36 ST - FM# 4435972						Funding Source: STATE			
2021-01	Type of Work: BIKE LANES/SIDEWALK		Proposed Study: N/A			LAP: No	Yes	Yes	Yes	Yes
2021 MPO CSMP PRIORITY #1 TOWN OF DAVIE BASED ON FEASIBILITY STUDY DONE UNDER 432066-3							MTP Page # 5-3		MTP Timeframe:	
P.E.	0	1,119,780	0	0	0	0	1,119,780	0		
CST	0	0	0	0	0	0	0	9,069,854		
Total	0	1,119,780	0	0	0	0	1,119,780	9,069,854		
CITY: DAVIE				OWNERSHIP: STATE			Total Project Cost Estimate:		10,189,634	

02	SR-7/US-441 TRANSIT CORRIDOR IMPROVEMENTS GROUP/PRIORITY 7 - FM# 4295767						Funding Source: FEDERAL			
2021-02	Type of Work: BIKE LANES/SIDEWALK		Proposed Study: N/A			LAP: No	Yes	N/A	Yes	Yes
2021 MPO CSMP PRIORITY #2 SR-7/US-441, TRANSIT CORRIDOR. OFF-SYSTEM ROADWAYS IMPROVEMENTS BASED ON SR-7 MULTIMODAL IMPROVEMENTS CORRIDOR STUDY UNDER 429576-1. NW 26TH ST FROM NW 47TH AVE TO SR-7; NW 19TH ST FROM NW 49TH AVE TO SR-7;NW 16TH ST FROM NW 47TH AVE TO SR-7. NW 26TH ST, MP 0 TO .595 CONSTRUCT BIKE LANES AND NARROW LANES SIDEWALK FILL IN GAPS. NW 19TH ST, MP 0 TO .204 CONSTRUCT SPARROWS AND WIDEN SIDEWALK AND FILL IN GAPS. NW 19TH ST, MP 0 TO .588 CONSTRUCT BIKE LANES AND NARROW LANES,NW 16TH ST, MP 0 TO .580 CONSTRUCT BIKE LANES AND NARROW LANES							MTP Page # 5-3		MTP Timeframe:	
ENV	0	30,000	0	0	0	0	30,000	0		
P.E.	692,309	50,657	0	0	0	0	742,966	0		
CST	0	0	0	0	0	0	0	3,888,308		
Total	692,309	80,657	0	0	0	0	772,966	3,888,308		
CITY: LAUDERDALE LAKES/LAUDERHILL				OWNERSHIP: COUNTY/LOCAL			Total Project Cost Estimate:		4,661,274	

Phase	<2022	2022	2023	2024	2025	2026	Amount Funded	Funding Needed
-------	-------	------	------	------	------	------	---------------	----------------

03 2021-03	SR-7/US-441 TRANSIT CORRIDOR IMPROVEMENTS GROUP/PRIORITY 8 - FM# 4295768						Funding Source: FEDERAL		
	Type of Work: BIKE LANES/SIDEWALK		Proposed Study: N/A		LAP: No		Yes	Yes	Yes
2021 MPO CSMP PRIORITY #3 SR-7/US-441, TRANSIT CORRIDOR. OFF-SYSTEM ROADWAYS IMPROVEMENTS BASED ON SR-7 MULTIMODAL IMPROVEMENTS CORRIDOR STUDY UNDER 429576-1. SW 25TH ST FROM SW 64TH TO SR-7; SW 33RD ST FROM 62ND TO SR-7; SW 72ND AVE FR PEMBROKE RD TO SW 9TH STREET SW 33RD ST,MP.794 TO 1.046 CONSTRUCT SIDEWALK ON NORTH SIDE OF ROAD; SW 25TH ST, MP .497 TO 1.003 CONSTRUCT SIDEWALK ON SOUTH SIDE OF ROAD; SW 25TH ST, MP .754 TO 1.003 CONSTRUCT BIKE LANES BY WIDENING TO THE OUTSIDE; SW 25TH ST (EAST OF SR7), MP 0 TO 1.464 CONSTRUCT BIKE LANES BY WIDENING TO THE OUTSIDE.									
ENV	0	20,000	0	0	0	0	20,000	0	
P.E.	649,868	47,551	0	0	0	0	697,419	0	
CST	0	0	0	0	0	0	0	3,463,224	
Total	649,868	67,551	0	0	0	0	717,419	3,463,224	

MTP Page # 5-3

MTP Timeframe:

CITY: MIRAMAR/WEST PARK OWNERSHIP: COUNTY/LOCAL Total Project Cost Estimate: 4,180,643

04 2021-04	SR-7/US-441 TRANSIT CORRIDOR IMPROVEMENTS GROUP/PRIORITY 9 - FM# 4295769						Funding Source: STATE AND FEDERAL		
	Type of Work: BIKE LANES/SIDEWALK		Proposed Study: N/A		LAP: No		Yes	N/A	Yes
2021 MPO CSMP PRIORITY #4 SR-7/US-441, TRANSIT CORRIDOR. OFF-SYSTEM ROADWAYS IMPROVEMENTS BASED ON SR-7 MULTIMODAL IMPROVEMENTS CORRIDOR STUDY UNDER 429576-1 TAFT ST. FROM SR-7 TO 40TH AVE. & SW 45TH ST. FROM TURNPIKE TO SR-7									
ENV	0	0	0	30,000	0	0	30,000	0	
P.E.	0	0	449,542	32,893	0	0	482,435	0	
CST	0	0	0	0	0	0	0	1,960,593	
Total	0	0	449,542	62,893	0	0	512,435	1,960,593	

MTP Page # 5-3

MTP Timeframe:

CITY: DAVIE/HOLLYWOOD OWNERSHIP: LOCAL Total Project Cost Estimate: 2,473,028

State Funds	Federal Funds	Local Funds
State and Local Funds	State and Federal Funds	Federal and Local Funds

Phase	<2022	2022	2023	2024	2025	2026	Amount Funded	Funding Needed	
05 Priority 2021-06	SAMPLE RD FROM BLOUNT RD TO NE 3 AVE - FM#						Funding Source: STATE		
	Type of Work: BIKE LANES/SIDEWALK						Proposed Study: N/A		
	LAP: No						Yes Yes Yes Yes		
BUFFERED BICYCLE LANES, WIDER PEDESTRIAN ZONE (SIDEWALKS), PEDESTRIAN LEVEL LIGHTING. FEASIBILITY STUDY IS INCLUDED IN THE PROJECT FM # 446377.1							MTP Page # 5-30		MTP Timeframe:
PE	0	0	0	0	0	0	0	500,000	
CST	0	0	0	0	0	0	0	3,800,000	
Total	0	0	0	0	0	0	0	4,300,000	
CITY: DEERFIELD BEACH/POMPANO BEACH				OWNERSHIP: STATE			Total Project Cost Estimate:		4,300,000
06 Priority 2021-07	NW 31 AVE FROM SUNRISE BLVD TO NW 44 ST - FM#						Funding Source: FEDERAL		
	Type of Work: BIKE LANES/SIDEWALK						Proposed Study: N/A		
	LAP: yes						No No Yes Yes		
ADD BICYCLE LANES, SEPARATED BICYCLE LANES AND CONTINUOUS FURNISHING ZONES COULD BE PROVIDED THRU LANE ELIMINATION, PEDESTRIAN LIGHTING							MTP Page # 5-30		MTP Timeframe:
PE	0	0	0	0	0	0	0	650,000	
CST	0	0	0	0	0	0	0	6,000,000	
Total	0	0	0	0	0	0	0	6,650,000	
CITY: LAUDERDALE LAKES/LAUDERHILL				OWNERSHIP: COUNTY			Total Project Cost Estimate:		6,650,000
07 Priority 2021-08	DIXIE HWY FROM SAMPLE RD TO BROWARD/PALM BEACH COUNTY LINE - FM#						Funding Source: STATE		
	Type of Work: BIKE LANES/SIDEWALK						Proposed Study: N/A		
	LAP: No						Yes Yes Yes Yes		
FILL IN PEDESTRIAN ZONE (SIDEWALK GAP) ON EAST SIDE FROM NE 54 ST TO ATLANTIC BLVD, FURNISHING ZONE, BUFFERED BICYCLE LANES, PEDESTRIAN LEVEL LIGHTING, STAMP CONCRETE INTERSECTIONS, TRANSIT SHELTERS, OPPORTUNITIES FOR LANDSCAPING, REFUGE ISLANDS, TRAFFIC CALMING. FEASIBILITY STUDY IS INCLUDED IN THE PROJECT FM # 446377.1							MTP Page # 5-30		MTP Timeframe:
PE	0	0	0	0	0	0	0	840,000	
CST	0	0	0	0	0	0	0	6,700,000	
Total	0	0	0	0	0	0	0	7,540,000	
CITY: DEERFIELD BEACH/POMPANO BEACH				OWNERSHIP: STATE			Total Project Cost Estimate:		7,540,000

Phase	<2022	2022	2023	2024	2025	2026	Amount Funded	Funding Needed		
08 Priority	OAKLAND PARK BLVD FROM HIATUS GREENWAY TO UNIVERSITY DR - FM#						Funding Source: FEDERAL			
2021-09	Type of Work: BIKE LANES/SIDEWALK		Proposed Study: N/A		LAP: yes		Yes	No	Yes	Yes
BUFFERED/PROTECTED BICYCLE LANES, WIDER PEDESTRIAN ZONE (SIDEWALKS), ADDITIONAL LIGHTING, MULTI-USE PATH ON SOUTH SIDE, TRANSIT SHELTERS, C-13 CANAL 10' TRAIL. FDOT recommends administering as LAP.							MTP Page # 5-30		MTP Timeframe:	
PE	0	0	0	0	0	0	0	800,000		
CST	0	0	0	0	0	0	0	6,300,000		
Total	0	0	0	0	0	0	0	7,100,000		
CITY: SUNRISE			OWNERSHIP: COUNTY			Total Project Cost Estimate:		7,100,000		
09 Priority	SHERIDAN ST FROM DOUGLAS RD TO UNIVERSITY DR - FM#						Funding Source: FEDERAL			
2021-10	Type of Work: BIKE LANES/SIDEWALK		Proposed Study: N/A		LAP: yes		Yes	No	Yes	Yes
CONTINUOUS PEDESTRIAN ZONE (SIDEWALK GAPS) ON SOUTH SIDE, BUFFERED BICYCLE LANES, MULTIUSE PATH IN THE NORTH SIDE. FDOT recommends administering as LAP.							MTP Page # 5-30		MTP Timeframe:	
PE	0	0	0	0	0	0	0	600,000		
CST	0	0	0	0	0	0	0	4,700,000		
Total	0	0	0	0	0	0	0	5,300,000		
CITY: COOPER CITY/PEMBROKE PINES			OWNERSHIP: LOCAL			Total Project Cost Estimate:		5,300,000		
10 Priority	PEMBROKE RD FROM SW 145 AVE TO FLAMINGO RD - FM#						Funding Source: FEDERAL			
2021-11	Type of Work: BIKE LANES/SIDEWALK		Proposed Study: N/A		LAP: yes		Yes	No	Yes	Yes
PROTECTED BICYCLE LANES, WIDER PEDESTRIAN ZONE (SIDEWALKS), FURNISHING ZONE. FDOT recommends administering as LAP.							MTP Page # 5-30		MTP Timeframe:	
PE	0	0	0	0	0	0	0	500,000		
CST	0	0	0	0	0	0	0	3,600,000		
Total	0	0	0	0	0	0	0	4,100,000		
CITY: MIRAMAR/PEMBROKE PINES			OWNERSHIP: LOCAL			Total Project Cost Estimate:		4,100,000		

PROGRAM THRESHOLD

Phase	<2022	2022	2023	2024	2025	2026	Amount Funded	Funding Needed	
11 Priority	MIRAMAR PKWY FROM SW 172 AVE TO DYKES RD - FM#						Funding Source: FEDERAL		
2021-12	Type of Work: BIKE LANES/SIDEWALK		Proposed Study: N/A		LAP: yes		Yes No Yes Yes		
SEPARATED BICYCLE LANES, FURNISHING ZONE, MID BLOCK CROSSWALKS AT BUS STOPS. FDOT recommends administering as LAP.							MTP Page # 5-30	MTP Timeframe:	
PE	0	0	0	0	0	0	0	500,000	
CST	0	0	0	0	0	0	0	3,600,000	
Total	0	0	0	0	0	0	0	4,100,000	
CITY: MIRAMAR				OWNERSHIP: LOCAL		Total Project Cost Estimate:		4,100,000	
12 Priority	OAKLAND PARK BLVD*** FROM UNIVERSITY DR TO ROCK ISLAND ROAD*** - FM#						Funding Source: STATE		
2021-13	Type of Work: BIKE LANES/SIDEWALK		Proposed Study: N/A		LAP: No		Yes Yes Yes Yes		
ENHANCED BUS CORRIDOR, BUFFERED BICYCLE LANES, WIDER PEDESTRIAN ZONE (SIDEWALKS), C-13 CANAL TRAIL. The project limits is included within the project limits for FM# 444673-1 SR-816/OAKLAND PARK BLVD from SR 817/University Drive to NW 31st Avenue: Oakland Park Blvd. Intermodal Development Study to Improve the Intermodal Access along the Corridor with Dedicated Bus Lanes and Improved Access to Local Transit Services.							MTP Page # 5-30	MTP Timeframe:	
PE	0	0	0	0	0	0	0	840,000	
CST	0	0	0	0	0	0	0	6,700,000	
Total	0	0	0	0	0	0	0	7,540,000	
CITY: LAUDERHILL/SUNRISE				OWNERSHIP: STATE		Total Project Cost Estimate:		7,540,000	
13 Priority	PEMBROKE RD FROM FLAMINGO RD TO DOUGLAS RD - FM#						Funding Source: FEDERAL		
2021-14	Type of Work: BIKE LANES/SIDEWALK		Proposed Study: N/A		LAP: yes		Yes No Yes Yes		
BUFFERED BICYCLE LANES, WIDER PEDESTRIAN ZONE (SIDEWALKS), PEMBROKE PINES/HOLLYWOOD TRAIL. FDOT recommends administering as LAP.							MTP Page # 5-30	MTP Timeframe:	
PE	0	0	0	0	0	0	0	840,000	
CST	0	0	0	0	0	0	0	6,700,000	
Total	0	0	0	0	0	0	0	7,540,000	
CITY: MIRAMAR/PEMBROKE PINES				OWNERSHIP: LOCAL		Total Project Cost Estimate:		7,540,000	

Phase	<2022	2022	2023	2024	2025	2026	Amount Funded	Funding Needed
14 Priority 2021-15	SOUTHGATE BLVD FROM SW 81 AVE TO SR 7/US 441 - FM#					Funding Source: FEDERAL		
	Type of Work: BIKE LANES/SIDEWALK		Proposed Study: N/A		LAP: yes	Yes	No	Yes Yes
SEPARATED BICYCLE LANES (W OF SW 65TH AVE), BICYCLE LANES (E OF SW 65TH AVE), BIKE BOX (SR 7), CONTINUOUS PEDESTRIAN ZONE (SIDEWALK GAPS), FURNISHING ZONE. FDOT recommends administering as LAP.							MTP Page # 5-30	MTP Timeframe:
PE	0	0	0	0	0	0	0	800,000
CST	0	0	0	0	0	0	0	6,600,000
Total	0	0	0	0	0	0	0	7,400,000
CITY: MARGATE/NORTH LAUDERDALE				OWNERSHIP: LOCAL		Total Project Cost Estimate:		7,400,000
15 Priority 2021-16	SE/NE 1 AVE / S/N 21 AVE/ DIXIE HWY FROM COUNTY LINE RD TO SHERIDAN ST - FM#					Funding Source: FEDERAL		
	Type of Work: BIKE LANES/SIDEWALK		Proposed Study: N/A		LAP: yes	Yes	No	Yes Yes
CONTINUOUS WIDER PEDESTRIAN ZONE (SIDEWALK GAPS), GREEN COLOR BUFFERED BICYCLE LANES, FURNISHING ZONE, LANDSCAPING OPPORTUNITIES, PEDESTRIAN LEVEL LIGHTING, TRANSIT SHELTERS WITH AMENITIES, ADDITIONAL PEDESTRIAN CROSSINGS, PEDESTRIAN COUNTDOWN SIGNALS, DRAINAGE IMPROVEMENTS**							MTP Page # 5-30	MTP Timeframe:
PE	0	0	0	0	0	0	0	900,000
CST	0	0	0	0	0	0	0	7,200,000
Total	0	0	0	0	0	0	0	8,100,000
CITY: HALLANDALE BEACH/HOLLYWOOD				OWNERSHIP: COUNTY		Total Project Cost Estimate:		8,100,000
16 Priority 2021-17	SW/SE 17 ST FROM SW 9 AVE TO CORDOVA - FM#					Funding Source: FEDERAL		
	Type of Work: BIKE LANES/SIDEWALK		Proposed Study: N/A		LAP: Yes for segment on Local Road	Yes	No	Yes Yes
CONTINUOUS PEDESTRIAN ZONE (10' MULTIUSE PATH ON SOUTH SIDE) TO SW 4TH AVE, SHARROWS FROM 4TH AVE TO 9TH AVETRANSIT SHELTERS, PEDESTRIAN LEVEL LIGHTING, CHICANES. The off-system portion SW/SE 17 ST FROM SW 9 AVE TO US-1/SR-5 to be implemented through the LAP process. The on-system portion SW/SE 17 ST FROM US-1/SR-5 TO CORDOVA RD. remains in the feasibility study FM# 4463771.							MTP Page # 5-30	MTP Timeframe:
PE	0	0	0	0	0	0	0	300,000
CST	0	0	0	0	0	0	0	2,200,000
Total	0	0	0	0	0	0	0	2,500,000
CITY: FORT LAUDERDALE				OWNERSHIP: STATE/LOCAL		Total Project Cost Estimate:		2,500,000

Phase	<2022	2022	2023	2024	2025	2026	Amount Funded	Funding Needed		
17 Priority 2021-18	ROYAL PALM BLVD FROM CORAL SPRINGS DR TO RIVERSIDE DR - FM#						Funding Source: FEDERAL			
	Type of Work: BIKE LANES/SIDEWALK		Proposed Study: N/A		LAP: yes		Yes	No	Yes	Yes
BUFFERED BICYCLE LANES, FURNISHING ZONE, TRANSIT SHELTERS, LIGHTING ENHANCEMENTS. SEPARATED BICYCLE LANES (W OF SW 65TH AVE), BICYCLE LANES (E OF SW 65TH AVE), BIKE BOX (SR 7), CONTINUOUS PEDESTRIAN ZONE (SIDEWALK GAPS), FURNISHING ZONE. FDOT recommends administering as LAP.							MTP Page # 5-30		MTP Timeframe:	
PE	0	0	0	0	0	0	0	500,000		
CST	0	0	0	0	0	0	0	4,000,000		
Total	0	0	0	0	0	0	0	4,500,000		
CITY: CORAL SPRINGS				OWNERSHIP: LOCAL			Total Project Cost Estimate: 4,500,000			
18 Priority 2021-New	NW 6 St from NW 31 Ave to NE 15 Ave - FM#						Funding Source: FEDERAL			
	Type of Work: BIKE LANES/SIDEWALK		Proposed Study: N/A		LAP: Yes		Yes	Yes	Yes	Yes
NW 6 St from NW 31st Ave. to NW 27th Ave.: Buffered bike lanes with lane width reduction and minor widening into median (if needed), shared use/multiuse path on north side (boardwalk), transit amenities, pedestrian lighting, ADA improvements, milling and resurfacing, midblock crossing near NW 29th Terrace. NW 6 St from NW 27th Ave to US-1: Refreshed crosswalks and new crosswalks, lighting improvements, intersection improvements, signal timing improvements. NW 6 St from US-1 to NE 15th Ave.: Traffic calming/speed humps, continuous sidewalk on one side of street, widen bike lanes if possible. ADA improvements at intersection especially on NE corner of US-1/NW 6th St. Intersection. Project Sponsor: Broward MPO							MTP Page # 5-30		MTP Timeframe:	
CST	0	0	0	0	0	0	0	5,100,000		
PE	0	0	0	0	0	0	0	969,000		
Total	0	0	0	0	0	0	0	6,069,000		
CITY: FORT LAUDERDALE				OWNERSHIP: LOCAL/COUNTY			Total Project Cost Estimate: 6,069,000			
19 Priority 2021-New	ROYAL PALM BLVD. FROM RIVERSIDE DR TO SR-7/US-441. - FM#						Funding Source: FEDERAL			
	Type of Work: BIKE LANES/SIDEWALK		Proposed Study: N/A		LAP: Yes		No	No	Yes	Yes
Fill in sidewalk gaps, Widen into median/outside where necessary to incorporate buffered bike lane, Continuous Furnishing Zone Project Sponsor: Broward MPO							MTP Page # 5-30		MTP Timeframe:	
CST	0	0	0	0	0	0	0	7,000,000		
PE	0	0	0	0	0	0	0	1,330,000		
Total	0	0	0	0	0	0	0	8,330,000		
CITY: MARGATE/ CORAL SPRINGS				OWNERSHIP: LOCAL			Total Project Cost Estimate: 8,330,000			

State Funds	Federal Funds	Local Funds
State and Local Funds	State and Federal Funds	Federal and Local Funds

Phase	<2022	2022	2023	2024	2025	2026	Amount Funded	Funding Needed
20 Priority 2021-New	Miramar Pkwy. from Douglas Rd. to SR-7 - FM# Type of Work: BIKE LANES/SIDEWALK Proposed Study: N/A LAP: Yes					Funding Source: FEDERAL Yes No Yes Yes MTP Page # 5-30 MTP Timeframe:		
	Lane width reduction from Douglas Rd. to University to incorporate 8 ft. sidewalks on both sides (City of Miramar road), Milling and resurfacing, Will widen/replace sidewalks east of University Drive to SR-7 to 8' ft. (Broward County road), Transit amenities at bus stops Project Sponsor: Broward MPO							
CST	0	0	0	0	0	0	0	8,300,000
PE	0	0	0	0	0	0	0	1,577,000
Total	0	0	0	0	0	0	0	9,877,000
CITY: MIRAMAR				OWNERSHIP: LOCAL/COUNTY		Total Project Cost Estimate:		9,877,000
21 Priority 2021-New	Atlantic Blvd. from NW 31 Ave to NW 6th Ave - FM# Type of Work: BIKE LANES/SIDEWALK Proposed Study: N/A LAP: No					Funding Source: STATE Yes Yes Yes Yes MTP Page # 5-30 MTP Timeframe:		
	Decorative pedestrian lighting- coordination with FPL during Design – city staff mentioned the possibility to work with FPL to provide the light poles at no cost to the project. Include Cables for lighting, Shelters, bike racks, benches, trash receptacles. NW 16th Avenue possible ponding and drainage fix- through local agreement. Will analyze in design to determine who will fund. NW 27th Ave. to I-95: Widen sidewalk to full width available on north side at least 10 ft, SW 21st/Magner Drive- Widen sidewalk to guardrail face Project Sponsor: Broward MPO							
CST	0	0	0	0	0	0	0	7,000,000
PE	0	0	0	0	0	0	0	1,330,000
Total	0	0	0	0	0	0	0	8,330,000
CITY: POMPANO BEACH				OWNERSHIP: STATE		Total Project Cost Estimate:		8,330,000
22 Priority 2021-New	SW 81st Ave. from NW 62nd St. / Bailey Rd. to Southgate Blvd. - FM# Type of Work: BIKE LANES/SIDEWALK Proposed Study: N/A LAP: Yes					Funding Source: FEDERAL Yes No Yes Yes MTP Page # 5-30 MTP Timeframe:		
	Project Limit- SW 81st. Ave. from NW 62nd St./ Bailey Rd. to Southgate Blvd., 2 roundabouts in corridor for traffic calming, Sharrows and multiuse path with pavement markings for sidewalk and bike lane designated area in each direction, Lower speed to 35 mph from 40 mph, Bus shelters and amenities, Landscape Buffer Project Sponsor: Broward MPO							
CST	0	0	0	0	0	0	0	5,300,000
PE	0	0	0	0	0	0	0	1,007,000
Total	0	0	0	0	0	0	0	6,307,000
CITY: NORTH LAUDERDALE				OWNERSHIP: LOCAL		Total Project Cost Estimate:		6,307,000

State Funds	Federal Funds	Local Funds
State and Local Funds	State and Federal Funds	Federal and Local Funds

Phase	<2022	2022	2023	2024	2025	2026	Amount Funded	Funding Needed		
23 Priority 2021-New	NE 3rd Ave. from Sample Rd. to Hillsboro Blvd. - FM#					Funding Source: FEDERAL				
	Type of Work: BIKE LANES/SIDEWALK		Proposed Study: N/A		LAP: Yes		Yes	No	Yes	Yes
Sample Rd from NE 3rd Ave. to Dixie Highway: FPL can replace all light fixtures for this corridor for pedestrian lighting along Sample Rd., Widen sidewalk on Northside, Pedestrian lighting. NE 3rd Ave. from Sample Rd. to Hillsboro Blvd.: Speed tables at SW 10th St., NE 48th St., Sample to NE 44th St, Continuous bike lane, Possible Midblock crossing near Broward Hospital, Sidewalk gaps, Roundabout at NE 44 St. NE 44th St. to SW 10th St.: Shared use path on east side, Widen sidewalk and gaps on west side, Pedestrian lighting. SW 10th to Hillsboro Blvd.: Sidewalk gap on west side, 10' Shared use path on east side, Pedestrian lighting. Project Sponsor: Broward MPO							MTP Page # 5-30		MTP Timeframe:	
CST	0	0	0	0	0	0	0	5,500,000		
PE	0	0	0	0	0	0	0	1,045,000		
Total	0	0	0	0	0	0	0	6,545,000		
CITY: DEERFIELD BEACH/POMPANO BEACH			OWNERSHIP: LOCAL			Total Project Cost Estimate:		6,545,000		
24 Priority 2021-New	Coral Springs Drive from Ramblewood Dr. to Wiles Rd. - FM#					Funding Source: FEDERAL				
	Type of Work: BIKE LANES/SIDEWALK		Proposed Study: N/A		LAP: Yes		Yes	No	Yes	Yes
Transit amenities for whole corridor, Pedestrian Lighting throughout. Ramblewood Dr. to Royal Palm Blvd.: Sidewalk on east/west side, 6-7' bike lane. Royal Palm Blvd. to Wiles Rd.: Lane width reduction to 11' with widening into median for 6 ft bike lane, Irrigation fixes wherever widening into median occurs Project Sponsor: Broward MPO							MTP Page # 5-30		MTP Timeframe:	
CST	0	0	0	0	0	0	0	5,500,000		
PE	0	0	0	0	0	0	0	1,045,000		
Total	0	0	0	0	0	0	0	6,545,000		
CITY: CORAL SPRINGS			OWNERSHIP: COUNTY			Total Project Cost Estimate:		6,545,000		
25 Priority 2021-New	Nob Hill Road from Sunset Strip to NW 44 St - FM#					Funding Source: FEDERAL				
	Type of Work: BIKE LANES/SIDEWALK		Proposed Study: N/A		LAP: Yes		No	No	Yes	n/a
Grade separated bike lane, continuous furnishing zone, pedestrian lighting, Transit shelter and amenities Project Sponsor: Broward MPO							MTP Page # 5-30		MTP Timeframe:	
CST	0	0	0	0	0	0	0	4,800,000		
PE	0	0	0	0	0	0	0	912,000		
Total	0	0	0	0	0	0	0	5,712,000		
CITY: SUNRISE			OWNERSHIP: LOCAL			Total Project Cost Estimate:		5,712,000		

State Funds	Federal Funds	Local Funds
State and Local Funds	State and Federal Funds	Federal and Local Funds

Phase	<2022	2022	2023	2024	2025	2026	Amount Funded	Funding Needed	
26	Priority NW 44th St. from SR-7 to NW 21st Ave. - FM#						Funding Source: FEDERAL		
2021-New	Type of Work: BIKE LANES/SIDEWALK						Proposed Study: N/A		
							LAP: Yes		
							<input type="radio"/> No <input type="radio"/> No <input checked="" type="radio"/> Yes <input type="radio"/> No		
	SR-7 to NW 31st Ave: Lane reduction to 1 lane in each direction with keeping left turn lanes with 7' buffered/curbed bike lane, Possible mid-block crossing at football field/baseball field complex, Pedestrian lighting. NW 31st Ave. to NW 29th Ave.: Lane reduction to 1 lane in each direction with keeping left turn lanes with 7' buffered/curbed bike lane, Pedestrian lighting. NW 29th Ave. to NW 21st Ave.: 12' Grade separated/curb separated cycle track facility, Pedestrian lighting Project Sponsor: Broward MPO						MTP Page # 5-30 MTP Timeframe:		
CST	0	0	0	0	0	0	0	26,000,000	
PE	0	0	0	0	0	0	0	4,940,000	
Total	0	0	0	0	0	0	0	30,940,000	
CITY: LUADERDALE LAKES/OAKLAND PARK				OWNERSHIP: LOCAL		Total Project Cost Estimate: 30,940,000			
27	Priority N 29 Ave from Sheridan St. to Sterling Rd. - FM#						Funding Source: FEDERAL		
2021-New	Type of Work: BIKE LANES/SIDEWALK						Proposed Study: N/A		
							LAP: Yes		
							<input type="radio"/> No <input checked="" type="radio"/> Yes <input checked="" type="radio"/> Yes <input checked="" type="radio"/> Yes		
	Lane elimination, Pedestrian lighting, Wider sidewalks with pavers, Dedicated center turn lane, Buffered bike lane with plastic delineators, Milling and resurfacing, Possible landscape opportunity areas (furnishing zone) between sidewalk and bike lane Project Sponsor: Broward MPO						MTP Page # 5-30 MTP Timeframe:		
CST	0	0	0	0	0	0	0	5,000,000	
PE	0	0	0	0	0	0	0	950,000	
Total	0	0	0	0	0	0	0	5,950,000	
CITY: HOLLYWOOD				OWNERSHIP: LOCAL		Total Project Cost Estimate: 5,950,000			
28	Priority McNab Rd. from NW 31 AVE to Dixie Hwy - FM#						Funding Source: FEDERAL		
2021-New	Type of Work: BIKE LANES/SIDEWALK						Proposed Study: N/A		
							LAP: Yes		
							<input type="radio"/> No <input type="radio"/> No <input checked="" type="radio"/> Yes <input type="radio"/> No		
	Lane Elimination (Powerline Rd. to Dixie Hy) -Convert To A Continuous 4L Corridor: Widen medians in Lane Elimination section, Landscaping opportunity areas, Irrigation sleeves. Separated Bicycle Lanes, Continuous Pedestrian Zones (Sidewalk Gaps)- Should be covered by Broward County project, Pedestrian Lighting, Transit Amenities, Bus Shelters. Additional pedestrian crossings potentially including NW 29th Avenue and NW 27th Avenue, NW 17th Ave, NW 15th Ave and NW 12th Ave, and east of Powerline where appropriate. Project Sponsor: Broward MPO						MTP Page # 5-30 MTP Timeframe:		
CST	0	0	0	0	0	0	0	5,400,000	
PE	0	0	0	0	0	0	0	1,026,000	
Total	0	0	0	0	0	0	0	6,426,000	
CITY: POMPANO BEACH/FORT LAUDERDALE				OWNERSHIP: COUNTY		Total Project Cost Estimate: 6,426,000			

Phase	<2022	2022	2023	2024	2025	2026	Amount Funded	Funding Needed		
29	SW 172 Ave from Bass Creek Rd. to Pembroke Rd - FM#						Funding Source: FEDERAL			
2021-New	Type of Work: BIKE LANES/SIDEWALK		Proposed Study: N/A			LAP: Yes	Yes	Yes	Yes	Yes
Pedestrian lighting., shelters/Bike racks, Milling and resurfacing. Bass Creek Rd to Miramar Parkway: Buffered bike lanes, Shared use path on west side- pedestrian lighting, All lanes widths to 11 ft. Miramar Parkway to Pembroke Road: Separated shared use path on both sides with bike lane markings, Lane width reduction to 11 ft Project Sponsor: Broward MPO										
CST	0	0	0	0	0	0	0	3,300,000		
PE	0	0	0	0	0	0	0	627,000		
Total	0	0	0	0	0	0	0	3,927,000		
CITY: MIRAMAR				OWNERSHIP: LOCAL			Total Project Cost Estimate:		3,927,000	

DRAFT

MOBILITY HUBS PROGRAM



LEGEND:

PRIORITIZED MOBILITY HUBS PROJECTS



Phase	<2022	2022	2023	2024	2025	2026	Amount Funded	Funding Needed		
01	SR-9/I-95 MOBILITY HUB AT CYPRESS CREEK - FM# 4358085						Funding Source: STATE AND FEDERAL			
2021-01	Type of Work: BIKE LANE/SIDEWALK			Proposed Study:		LAP: No	Yes	Yes	Yes	Yes
WIDENING FOR ADDITIONAL TURN LANE AND BIKE LANES, SIDEWALK CONSTRUCTION, RESURFACING. WEST CYPRESS CREEK RD FROM POWER LINE RD TO W OF SFRC; NW 59TH CT; N ANDREWS WAY. NO RIGHT OF WAY REQUIRED 2021 MPO HUB PRIORITY #1							MTP Page # 5-3	MTP Timeframe:		
CEI	0	0	0	754,942	16,538	0	771,480	0		
Construction	0	0	0	4,328,357	0	0	4,328,357	0		
Landscaping	0	0	0	0	0	0	0	272,134		
Total	0	0	0	5,083,299	16,538	0	5,099,837	272,134		
CITY: FORT LAUDERDALE				OWNERSHIP: COUNTY/STATE			Total Project Cost Estimate:	5,371,971		



ROADWAY PROGRAM



LEGEND:

 **PRIORITIZED ROADWAY PROJECTS**



Phase	<2022	2022	2023	2024	2025	2026	Amount Funded	Funding Needed
01	PEMBROKE ROAD FROM DOUGLAS ROAD (SW 89 AV) TO SR-817/UNIVERSITY DRIVE - FM# 4369801						Funding Source: STATE AND FEDERAL	
2021-03	Type of Work: ADD LANES & RECONSTRUCT		Proposed Study: N/A		LAP: NO		Yes Yes Yes Yes	
2021 MPO HIGHWAY PRIORITY #3 WIDEN 4 TO 6 LANES 22-01 TRAFFIC PROJECTIONS, SURVEYS, EDTM ACTIVITIES							MTP Page # 5-4	MTP Timeframe: 2021-2025
RW Land	0	0	0	0	1,782,961	0	1,782,961	0
RW Support	0	0	0	0	205,927	0	205,927	0
PDE	1,798,043	0	0	0	0	0	1,798,043	0
PE	782,047	0	0	0	0	0	782,047	0
CST	0	0	0	0	0	0	0	3,099,573
Total	2,580,090	0	0	0	1,988,888	0	4,568,978	3,099,573

CITY: MIRAMAR/PEMBROKE PINES OWNERSHIP: LOCAL Total Project Cost Estimate: 7,668,551

02	SR-5/US-1 @ SR-838/SUNRISE BOULEVARD - FM# 4419551						Funding Source: STATE	
2021-04	Type of Work: PD&E/EMO STUDY		Proposed Study: PD&E		LAP: NO		Yes Yes Yes Yes	
2021 MPO PRIORITY #4 @ GATEWAY THEATER R/W NEEDED							MTP Page # 5-4	MTP Timeframe: 2021-2025
PDE	0	510,000	1,500,000	0	0	0	2,010,000	0
PE	0	0	0	0	0	4,010,000	4,010,000	0
CST	0	0	0	0	0	0	0	19,439,122
Total	0	510,000	1,500,000	0	0	4,010,000	6,020,000	19,439,122

CITY: FORT LAUDERDALE OWNERSHIP: STATE Total Project Cost Estimate: 25,459,122

03	SR-820/PINES BLVD FROM US-27 TO NW 196TH AVE - FM# 4449771						Funding Source: STATE	
2021-05	Type of Work: PD&E/EMO STUDY		Proposed Study: PD&E		LAP: NO		Yes Yes Yes Yes	
2021 MPO PRIORITY #5 4L TO 6L; IS R/W NEEDED							MTP Page # 5-4	MTP Timeframe: 2021-2025
PDE	0	0	700,000	2,000,000	0	0	2,700,000	0
PE	0	0	0	0	849,882	0	849,882	0
PE	0	0	0	0	0	0	0	1,160,118
CST	0	0	0	0	0	0	0	8,481,698
Total	0	0	700,000	2,000,000	849,882	0	3,549,882	9,641,816

CITY: PEMBROKE PINES OWNERSHIP: STATE Total Project Cost Estimate: 13,191,698

Phase	<2022	2022	2023	2024	2025	2026	Amount Funded	Funding Needed	
04	SR-820/PINES BLVD. @ SR-823/FLAMINGO RD - FM# 4080462						Funding Source: STATE		
2021-06	Type of Work: PD&E/EMO STUDY		Proposed Study: PD&E		LAP: NO		Yes Yes Yes Yes		
2021 MPO PRIORITY #6 IS R/W NEEDED 22-01: PRE-WORK; 22-02: FEASIBILITY STUDY; 22-03: PD&E							MTP Page # 5-4	MTP Timeframe: 2021-2025	
PDE	0	0	610,000	500,000	1,500,000	0	2,610,000	0	
PE	0	0	0	0	0	2,010,000	2,010,000	5,280,000	
ROW	0	0	0	0	0	0	0	45,000,000	
CST	0	0	0	0	0	0	0	45,000,000	
Total	0	0	610,000	500,000	1,500,000	2,010,000	4,620,000	95,280,000	

CITY: PEMBROKE PINES OWNERSHIP: STATE Total Project Cost Estimate: 99,900,000

05	SR-845/POWERLINE RD FROM SW 10TH ST TO BROWARD/PALM BEACH COUNTY LINE - FM# 4463781						Funding Source: STATE		
2021-07	Type of Work: PD&E/EMO STUDY		Proposed Study: PD&E		LAP: NO		Yes Yes Yes Yes		
2021 MPO PRIORITY# 7 WIDEN FROM 4 TO 6 LANES IS R/W NEEDED							MTP Page # 5-11	MTP Timeframe: 2025	
PDE	0	0	0	0	500,000	1,500,000	2,000,000	0	
PE	0	0	0	0	0	0	0	576,332	
ROW	0	0	0	0	0	0	0	11,710,602	
CST	0	0	0	0	0	0	0	11,710,602	
Total	0	0	0	0	500,000	1,500,000	2,000,000	23,997,536	

CITY: DEERFIELD BEACH OWNERSHIP: STATE Total Project Cost Estimate: 25,997,536

06	SR-7/US-441 @ SR-870/COMMERCIAL BLVD - FM# 4463801						Funding Source: STATE		
2021-08	Type of Work: PD&E/EMO STUDY		Proposed Study: PD&E		LAP: NO		Yes Yes Yes Yes		
2021 MPO PRIORITY# 8 IS R/W NEEDED							MTP Page # 5-17	MTP Timeframe: 2031-2035	
PDE	0	0	0	0	600,000	2,000,000	2,600,000	0	
PE	0	0	0	0	0	0	0	32,560,000	
ROW	0	0	0	0	0	0	0	148,000,000	
CST	0	0	0	0	0	0	0	148,000,000	
Total	0	0	0	0	600,000	2,000,000	2,600,000	328,560,000	

CITY: TAMARAC OWNERSHIP: STATE Total Project Cost Estimate: 183,160,000

Phase	<2022	2022	2023	2024	2025	2026	Amount Funded	Funding Needed		
07	SW 130TH AVE FROM SW 8TH ST TO SR-84 - FM# 4463811						Funding Source: FEDERAL			
2021-09	Type of Work: FEASIBILITY STUDY		Proposed Study: Feasibility			LAP: NO	Yes	Yes	Yes	Yes
2021 MPO HIGHWAY PRIORITY# 9 IS R/W NEEDED							MTP Page # 5-16	MTP Timeframe: 2026-2030		
PDE	0	0	0	0	500,000	0	500,000	0		
PE	0	0	0	0	0	0	0	686,680		
CST	0	0	0	0	0	0	0	5,394,800		
Total	0	0	0	0	500,000	0	500,000	6,081,480		
CITY: DAVIE					OWNERSHIP: LOCAL		Total Project Cost Estimate: 6,581,480			
08	SW 136TH AVE FROM SW 26TH ST TO SW 6TH CT - FM# 4463812						Funding Source: FEDERAL			
2021-10	Type of Work: PD&E/EMO STUDY		Proposed Study: PD&E			LAP: NO	Yes	Yes	Yes	Yes
2021 MPO PRIORTY# 10 WIDEN 2 TO 4 LANES IS R/W NEEDED							MTP Page # 5-16	MTP Timeframe: 2026-2030		
PDE	0	0	0	0	500,000	1,750,000	2,250,000	0		
PE	0	0	0	0	0	0	0	2,405,320		
CST	0	0	0	0	0	0	0	13,206,000		
Total	0	0	0	0	500,000	1,750,000	2,250,000	15,611,320		
CITY: DAVIE					OWNERSHIP: LOCAL		Total Project Cost Estimate: 17,861,320			
09	SR-822/SHERIDAN STREET FROM DIXIE HIGHWAY TO SR-5/US 1 - FM# 4479221						Funding Source: STATE			
2021-11	Type of Work: PD&E/EMO STUDY		Proposed Study: PD&E			LAP: NO	Yes	Yes	Yes	Yes
2021 MPO PRIORITY # 11 IS R/W NEEDED							MTP Page # 5-11	MTP Timeframe: 2025		
PDE	0	0	0	0	0	505,000	505,000	0		
PE	0	0	0	0	0	0	0	941,147		
ROW	0	0	0	0	0	0	0	38,332,475		
CST	0	0	0	0	0	0	0	4,277,940		
Total	0	0	0	0	0	505,000	505,000	43,551,562		
CITY: DANIA BEACH/HOLLYWOOD					OWNERSHIP: STATE		Total Project Cost Estimate: 44,056,562			

Phase	<2022	2022	2023	2024	2025	2026	Amount Funded	Funding Needed		
10	Priority Hollywood Blvd from US-1 to SR-A1A - FM#						Funding Source: STATE			
2021-12	Type of Work: Resiliency Study		Proposed Study: Resiliency		LAP: NO		Yes	N/A	Yes	Yes
Conduct study to determine resiliency improvements. Planning study included in FM# 4481321 SOUTHEAST BROWARD RESILIENCY STUDY - PHASE 1 - MULTIPLE LOCATIONS. Project Sponsor: Broward MPO							MTP Page # 5-13	MTP Timeframe: 2026-2030		
PE	0	0	0	0	0	0	0	1,500,000		
Total	0	0	0	0	0	0	0	1,500,000		
CITY: HOLLYWOOD				OWNERSHIP: STATE		Total Project Cost Estimate:		1,500,000		
11	Priority SR-A1A from South of Arizona St to Hallandale Beach Blvd - FM#						Funding Source: STATE			
2021-13	Type of Work: Resiliency Study		Proposed Study: Resiliency		LAP: NO		Yes	N/A	Yes	Yes
Conduct study to determine resiliency improvements. Drainage improvements programmed in FM# 4485741, 4488761, 4485771. Project Sponsor: Broward MPO							MTP Page # 5-13	MTP Timeframe: 2026-2030		
PE	0	0	0	0	0	0	0	1,500,000		
Total	0	0	0	0	0	0	0	1,500,000		
CITY: HALLANDALE BEACH				OWNERSHIP: STATE		Total Project Cost Estimate:		1,500,000		
12	Priority US-1/SR-5 from Las Olas Blvd to Davie Blvd - FM#						Funding Source: STATE			
2021-14	Type of Work: Resiliency Study		Proposed Study: Resiliency		LAP: NO		Yes	N/A	Yes	Yes
Conduct study to determine resiliency improvements. Planning study included in FM# 4480881 SR-5/US-1 FT LAUDERDALE RESILIENCY STUDY - PHASE 1. Project Sponsor: Broward MPO							MTP Page # 5-13	MTP Timeframe: 2026-2030		
PE	0	0	0	0	0	0	0	1,500,000		
Total	0	0	0	0	0	0	0	1,500,000		
CITY: FORT LAUDERDALE				OWNERSHIP: STATE		Total Project Cost Estimate:		1,500,000		
13	Priority US-1 from Broward Blvd to Las Olas Blvd - FM#						Funding Source: STATE			
2021-15	Type of Work: Resiliency Study		Proposed Study: Resiliency		LAP: NO		Yes	N/A	Yes	Yes
Conduct study to determine resiliency improvements. Planning study included in FM# 4480881 SR-5/US-1 FT LAUDERDALE RESILIENCY STUDY - PHASE 1. Project Sponsor: Broward MPO							MTP Page # 5-13	MTP Timeframe: 2026-2030		
PE	0	0	0	0	0	0	0	750,000		
Total	0	0	0	0	0	0	0	750,000		
CITY: FORT LAUDERDALE				OWNERSHIP: STATE		Total Project Cost Estimate:		750,000		

Phase	<2022	2022	2023	2024	2025	2026	Amount Funded	Funding Needed		
14	Priority Las Olas Blvd. from US-1 to SR-A1A - FM#						Funding Source: STATE			
2021-16	Type of Work: Resiliency Study		Proposed Study: Resiliency		LAP: NO		Yes	N/A	Yes	Yes
Conduct study to determine resiliency improvements. Project Sponsor: Broward MPO							MTP Page # 5-13	MTP Timeframe: 2026-2030		
PE	0	0	0	0	0	0	0	1,500,000		
Total	0	0	0	0	0	0	0	1,500,000		
CITY: FORT LAUDERDALE			OWNERSHIP: STATE/LOCAL			Total Project Cost Estimate:		1,500,000		
15	Priority US-1 from Pembroke Rd to Hallandale Beach Blvd - FM#						Funding Source: STATE			
2021-17	Type of Work: Resiliency Study		Proposed Study: Resiliency		LAP: NO		Yes	N/A	Yes	Yes
Conduct study to determine resiliency improvements. Planning study included in FM# 4481321 SOUTHEAST BROWARD RESILIENCY STUDY - PHASE 1 - MULTIPLE LOCATIONS. Project Sponsor: Broward MPO							MTP Page # 5-13	MTP Timeframe: 2026-2030		
PE	0	0	0	0	0	0	0	1,000,000		
Total	0	0	0	0	0	0	0	1,000,000		
CITY: HALLANDALE BEACH			OWNERSHIP: STATE			Total Project Cost Estimate:		1,000,000		
16	Priority Hallandale Beach Blvd From US-1 to SR-A1A - FM#						Funding Source: STATE			
2021-18	Type of Work: Resiliency Study		Proposed Study: Resiliency		LAP: NO		Yes	N/A	Yes	Yes
Conduct study to determine resiliency improvements. Planning study included in FM# 4481321 SOUTHEAST BROWARD RESILIENCY STUDY - PHASE 1 - MULTIPLE LOCATIONS. Project Sponsor: Broward MPO							MTP Page # 5-13	MTP Timeframe: 2026-2030		
PE	0	0	0	0	0	0	0	1,500,000		
Total	0	0	0	0	0	0	0	1,500,000		
CITY: HALLANDALE BEACH			OWNERSHIP: STATE			Total Project Cost Estimate:		1,500,000		
17	Priority Dixie Hwy Corridor from Oakland Park Blvd to Prospect Rd - FM#						Funding Source: STATE			
2021-19	Type of Work: Bike/Ped		Proposed Study: Feasibility		LAP: NO		Yes	Yes	Yes	Yes
Conduct multimodal feasibility study. Corridor upgrades to enhance safety and convenience for walkers, cyclists, motorists and those using public transit. Providing for enhanced pedestrian crossing across Dixie Highway and the FEC, while adding multi-modal forms of transportation. Project Sponsor: City of Oakland Park							MTP Page # 5-13	MTP Timeframe: 2026-2030		
PE	0	0	0	0	0	0	0	600,000		
Total	0	0	0	0	0	0	0	600,000		
CITY: OAKLAND PARK			OWNERSHIP: STATE			Total Project Cost Estimate:		600,000		

Phase	<2022	2022	2023	2024	2025	2026	Amount Funded	Funding Needed	
18	Priority SE 10th St from Dixie Hwy to US-1 - FM#						Funding Source: STATE		
2021-20	Type of Work: Feasibility Study		Proposed Study: Feasibility			LAP: NO	Yes	Yes	Yes Yes
Conduct multimodal feasibility study. The City is concerned that once 10th street improvements are completed, additional trips will occur eastbound and the current roadway cannot handle this increase at this time. Project Sponsor: City of Deerfield Beach							MTP Page # 5-14	MTP Timeframe: 2026-2030	
PE	0	0	0	0	0	0	0	750,000	
Total	0	0	0	0	0	0	0	750,000	
CITY: DEERFIELD BEACH				OWNERSHIP: STATE/LOCAL		Total Project Cost Estimate:		750,000	
19	Priority County Line Rd/HEFT Extension from I-95 to Florida's Turnpike - FM#						Funding Source: STATE		
2021-21	Type of Work: Feasibility study		Proposed Study: Feasibility			LAP: NO	Yes	N/A	Yes Yes
Conduct multimodal feasibility study. Coordination will be needed with FDOT District 6. Project Sponsor: Broward MPO							MTP Page # 5-14	MTP Timeframe: 2026-2030	
PE	0	0	0	0	0	0	0	1,500,000	
Total	0	0	0	0	0	0	0	1,500,000	
CITY: MIRAMAR/PEMBROKE PARK/WEST PARK				OWNERSHIP: STATE		Total Project Cost Estimate:		1,500,000	
20	Priority Pompano Beach FEC-SFRC connection - FM#						Funding Source: STATE		
2021-22	Type of Work: New track connection		Proposed Study: PD&E			LAP: NO	Yes	Yes	Yes Yes
Construct track connection between FEC rail corridor and SFRC at Pompano Beach. Project requires buy in from FEC & CSX. FM# 417031-9. Project Sponsor: SFRTA							MTP Page # 5-14	MTP Timeframe: 2026-2030	
PE	0	0	0	0	0	0	0	7,700,000	
ROW	0	0	0	0	0	0	0	35,000,000	
CST	0	0	0	0	0	0	0	35,000,000	
Total	0	0	0	0	0	0	0	77,700,000	
CITY: POMPANO BEACH				OWNERSHIP: STATE		Total Project Cost Estimate:		77,700,000	

Phase	<2022	2022	2023	2024	2025	2026	Amount Funded	Funding Needed		
21	Griffin Rd @ Old Griffin Rd intersection - FM#						Funding Source: STATE			
2021-23	Type of Work: Intersection Improvement			Proposed Study: N/A		LAP: NO	Yes	Yes	Yes	Yes
Construct interim reconfiguration of north approach to intersection. Project Sponsor: FDOT							MTP Page # 5-14	MTP Timeframe: 2026-2030		
PE	0	0	0	0	0	0	0	440,000		
ROW	0	0	0	0	0	0	0	2,000,000		
CST	0	0	0	0	0	0	0	2,000,000		
Total	0	0	0	0	0	0	0	4,440,000		
CITY: DANIA BEACH				OWNERSHIP: STATE		Total Project Cost Estimate:		4,440,000		
22	Florida's Turnpike Interchange @ Griffin Rd/Orange Dr - FM#						Funding Source: STATE			
2021-24	Type of Work: Interchange Improvements			Proposed Study: N/A		LAP: NO	Yes	Yes	Yes	Yes
Construct improvements to interchange. The Orange Drive, Griffin Road, Turnpike interchange is congested and confusing. Project goes with FM# 406095-4. Project Sponsor: Town of Davie							MTP Page # 5-14	MTP Timeframe: 2026-2030		
PE	0	0	0	0	0	0	0	9,240,000		
ROW	0	0	0	0	0	0	0	0		
CST	0	0	0	0	0	0	0	42,000,000		
Total	0	0	0	0	0	0	0	51,240,000		
CITY: DAVIE				OWNERSHIP: STATE		Total Project Cost Estimate:		51,240,000		
23	SR-810/Oakland Park Blvd @ SR-7/US-441 - FM#						Funding Source: STATE			
2021-25	Type of Work: Intersection Improvement			Proposed Study: PD&E		LAP: NO	Yes	Yes	Yes	Yes
Construct center turn overpass. Project is associated with TSM&O/Safety Project "SR-810/Oakland Park Blvd @ SR-7/US-441". Project Sponsor: Broward MPO							MTP Page # 5-14	MTP Timeframe: 2026-2030		
PE	0	0	0	0	0	0	0	9,900,000		
ROW	0	0	0	0	0	0	0	45,000,000		
CST	0	0	0	0	0	0	0	45,000,000		
Total	0	0	0	0	0	0	0	99,900,000		
CITY: LAUDERDALE LAKES				OWNERSHIP: STATE		Total Project Cost Estimate:		99,900,000		

Phase	<2022	2022	2023	2024	2025	2026	Amount Funded	Funding Needed		
24	US-1/SR-5 from McNab Rd/15th St to Cypress Creek Rd/62nd St - FM#						Funding Source: STATE			
2021-26	Type of Work: Add eastbound left turn lane			Proposed Study: N/A		LAP: NO	Yes	No	Yes	No
Add eastbound left-turn lane. Project Sponsor: FDOT							MTP Page # 5-14	MTP Timeframe: 2026-2030		
PE	0	0	0	0	0	0	0	441,980		
CST	0	0	0	0	0	0	0	2,009,000		
Total	0	0	0	0	0	0	0	2,450,980		
CITY: FORT LAUDERDALE				OWNERSHIP: STATE		Total Project Cost Estimate:		2,450,980		
25	University Dr @ Royal Palm Blvd - FM#						Funding Source: STATE			
2021-27	Type of Work: Add dual left turn lanes			Proposed Study: PD&E		LAP: NO	Yes	Yes	Yes	Yes
Add dual left-turn lanes on University Dr southbound at Royal Palm Blvd. Environmental study may be needed. Project Sponsor: City of Coral Springs							MTP Page # 5-14	MTP Timeframe: 2026-2030		
PE	0	0	0	0	0	0	0	102,666		
ROW	0	0	0	0	0	0	0	466,662		
CST	0	0	0	0	0	0	0	466,662		
Total	0	0	0	0	0	0	0	1,035,990		
CITY: CORAL SPRINGS				OWNERSHIP: STATE		Total Project Cost Estimate:		1,035,990		
26	SR-A1A @ Hillsboro Blvd - FM#						Funding Source: STATE			
2021-28	Type of Work: Intersection reconfiguration			Proposed Study: PD&E		LAP: NO	Yes	Yes	Yes	Yes
Reconfigure intersection; additional EB to NB turn lane, allow throughmovement EB to WB, and extend left-turn lane NB to WB. Traffic headed East, West, and North are congested, and cars often require two or three light-cycles to pass through the intersection. The Town Commission expressed the importance of this project with the MPO, FDOT and County. Project Sponsor: Town of Hillsboro Beach							MTP Page # 5-15	MTP Timeframe: 2026-2030		
PE	0	0	0	0	0	0	0	676,129		
ROW	0	0	0	0	0	0	0	3,073,311		
CST	0	0	0	0	0	0	0	3,073,311		
Total	0	0	0	0	0	0	0	6,822,751		
CITY: DEERFIELD BEACH				OWNERSHIP: STATE		Total Project Cost Estimate:		6,822,751		

State Funds	Federal Funds	Local Funds
State and Local Funds	State and Federal Funds	Federal and Local Funds

Phase	<2022	2022	2023	2024	2025	2026	Amount Funded	Funding Needed		
27 Priority 2021-29	Hallandale Beach @ NE 14th Ave - FM#					Funding Source: STATE				
	Type of Work: East Bound - Add Turn Lane		Proposed Study: PD&E		LAP: NO		Yes	Yes	Yes	Yes
Implement dual left-turn lane from EB Hallandale Beach Blvd to NB NE 14th Ave. Inadequate storage capacity creates traffic congestion on eastbound Hallandale Beach Blvd. Right of way is required. Project Sponsor: City of Hallandale Beach							MTP Page # 5-15	MTP Timeframe: 2026-2030		
PE	0	0	0	0	0	0	0	368,131		
ROW	0	0	0	0	0	0	0	1,673,325		
CST	0	0	0	0	0	0	0	1,673,325		
Total	0	0	0	0	0	0	0	3,714,781		
CITY: HALLANDALE BEACH				OWNERSHIP: STATE		Total Project Cost Estimate:		3,714,781		
28 Priority 2021-30	South Florida Rail Corridor @ Copans Rd - FM#					Funding Source: STATE				
	Type of Work: Grade separation		Proposed Study: PD&E		LAP: NO		Yes	Yes	Yes	Yes
Construct grade separation at railroad crossing. Feasibility study is currently in Work Program. FDOT rail office is looking at grade separation in multiple locations. Project Sponsor: Broward MPO							MTP Page # 5-15	MTP Timeframe: 2026-2030		
PE	0	0	0	0	0	0	0	5,198,600		
ROW	0	0	0	0	0	0	0	23,630,000		
CST	0	0	0	0	0	0	0	23,630,000		
Total	0	0	0	0	0	0	0	52,458,600		
CITY: POMPANO BEACH				OWNERSHIP: STATE		Total Project Cost Estimate:		52,458,600		
29 Priority 2021-31	Johnson St from US-1 to N 14th Ave - FM#					Funding Source: FEDERAL				
	Type of Work: Resiliency Study		Proposed Study: Resiliency		LAP: NO		Yes	N/A	Yes	Yes
Conduct study to determine resiliency improvements. Project Sponsor: Broward MPO							MTP Page # 5-15	MTP Timeframe: 2026-2030		
PE	0	0	0	0	0	0	0	750,000		
Total	0	0	0	0	0	0	0	750,000		
CITY: HOLLYWOOD				OWNERSHIP: LOCAL		Total Project Cost Estimate:		750,000		

PROGRAM THRESHOLD

Phase	<2022	2022	2023	2024	2025	2026	Amount Funded	Funding Needed		
30	SE 2nd St/Hibiscus St/Church St Extension Project from US-1 to Church St - FM#						Funding Source: STATE			
2021-32	Type of Work: New Road Construction		Proposed Study: Feasibility		LAP: NO		Yes	Yes	Yes	Yes
Conduct multimodal feasibility study. This new facility would relieve traffic off of Hallandale Beach Blvd and accommodate new trips from future committed developments. New Road, for FDOT to construct, the segment would need to be assigned in the Federal Aid System. ROW is a challenge. Project Sponsor: City of Hallandale Beach										
PE	0	0	0	0	0	0	0	600,000		
Total	0	0	0	0	0	0	0	600,000		
CITY: HALLANDALE BEACH				OWNERSHIP: LOCAL			Total Project Cost Estimate:		600,000	
31	East Orange Dr from SW 67th Ave to SR-7 - FM#						Funding Source: STATE			
2021-33	Type of Work: Add center turn lane		Proposed Study: PD&E		LAP: NO		Yes	Yes	Yes	Yes
Add center turn lane and lighting improvements. Project may not need PD&E study. Depends on right of way. Project Sponsor: Town of Davie										
PE	0	0	0	0	0	0	0	1,245,435		
ROW	0	0	0	0	0	0	0	5,661,069		
CST	0	0	0	0	0	0	0	5,661,069		
Total	0	0	0	0	0	0	0	12,567,573		
CITY: DAVIE				OWNERSHIP: LOCAL			Total Project Cost Estimate:		12,567,573	
32	Coral Hills Dr from Sample Rd to NW 31st Ct - FM#						Funding Source: STATE			
2021-34	Type of Work: Add Lanes & Reconstruct		Proposed Study: PD&E		LAP: NO		Yes	Yes	Yes	Yes
Extend left-turn lane on Coral Hills Dr at Sample Rd, widen Coral Hills Dr between Sample Rd and NW 31st to 3-lane cross section including curb and gutter, bike lanes, and new sidewalk on east side. Congestion relief is needed at each of these intersections. Vehicle backup into through lanes and the LOS is failing. Project may not need PD&E study. "Add lanes" are only turn lanes and could go towards LAP. Project Sponsor: City of Coral Springs										
PE	0	0	0	0	0	0	0	304,416		
ROW	0	0	0	0	0	0	0	1,383,708		
CST	0	0	0	0	0	0	0	1,383,708		
Total	0	0	0	0	0	0	0	3,071,832		
CITY: CORAL SPRINGS				OWNERSHIP: LOCAL			Total Project Cost Estimate:		3,071,832	

Phase	<2022	2022	2023	2024	2025	2026	Amount Funded	Funding Needed		
33 Priority 2021-35	SE 9th St FEC Rail Crossing Realignment from Dixie Hwy to US-1 - FM#						Funding Source: STATE			
	Type of Work: New FEC rail crossing		Proposed Study: PD&E		LAP: NO		Yes	Yes	Yes No	
Construct grade separation over railroad crossing. Add EB to NB left-turn lane at US-1. Realigning the FEC rail crossing will help calm traffic in the surrounding single family neighborhoods while also creating a street hierarchy in the system. FEC collaboration has not taken place. Project Sponsor: City of Hallandale Beach										
	MTP Page # 5-16						MTP Timeframe: 2026-2030			
PE	0	0	0	0	0	0	0	188,133		
ROW	0	0	0	0	0	0	0	855,150		
CST	0	0	0	0	0	0	0	855,150		
Total	0	0	0	0	0	0	0	1,898,433		
CITY: HALLANDALE BEACH				OWNERSHIP: LOCAL			Total Project Cost Estimate: 1,898,433			
34 Priority 2021-36	Pembroke Rd from SW 160th Ave to SW 184th Ave - FM#						Funding Source: STATE			
	Type of Work: Widening		Proposed Study: PD&E		LAP: NO		Yes	Yes	Yes Yes	
Widen from 2 to 4 lanes with median, bicycle lanes, sidewalks, lighting, landscaping, hardscape, and irrigation systems. Project Sponsor: City of Miramar										
	MTP Page # 5-16						MTP Timeframe: 2026-2030			
PE	0	0	0	0	0	0	0	3,113,000		
ROW	0	0	0	0	0	0	0	14,150,000		
CST	0	0	0	0	0	0	0	14,150,000		
Total	0	0	0	0	0	0	0	31,413,000		
CITY: MIRAMAR				OWNERSHIP: LOCAL			Total Project Cost Estimate: 31,413,000			
35 Priority 2021-37	University Dr from Old Club Rd to Loxahatchee Rd - FM#						Funding Source: STATE			
	Type of Work: Widening		Proposed Study: PD&E		LAP: NO		Yes	Yes	Yes Yes	
Widen from 2 to 4 lanes with bike lanes and sidewalks. University Drive tapers from a 4-lane divided section to a 2-lane roadway south of Old Club Rd causing traffic congestion and back up delays at crossing intersections. Project Sponsor: City of Parkland										
	MTP Page # 5-16						MTP Timeframe: 2026-2030			
PE	0	0	0	0	0	0	0	2,073,974		
ROW	0	0	0	0	0	0	0	0		
CST	0	0	0	0	0	0	0	9,427,156		
Total	0	0	0	0	0	0	0	11,501,130		
CITY: PARKLAND				OWNERSHIP: LOCAL			Total Project Cost Estimate: 11,501,130			

Phase	<2022	2022	2023	2024	2025	2026	Amount Funded	Funding Needed		
36 Priority 2021-38	SW 148th Ave from Bass Creek Rd to Miramar Pkwy - FM#						Funding Source: FEDERAL			
	Type of Work: Widening			Proposed Study: PD&E		LAP: NO	Yes	Yes	Yes	Yes
Widen from 2 to 4 lanes with median, bicycle lanes, sidewalks, lighting, landscaping, hardscape, and irrigation. Road is at LOS F							MTP Page # 5-18		MTP Timeframe: 2031-2035	
Project Sponsor: City of Miramar										
PE	0	0	0	0	0	0	0	1,608,153		
ROW	0	0	0	0	0	0	0	0		
CST	0	0	0	0	0	0	0	7,309,787		
Total	0	0	0	0	0	0	0	8,917,940		
CITY: MIRAMAR				OWNERSHIP: LOCAL			Total Project Cost Estimate:		8,917,940	
37 Priority 2021-39	Miramar Blvd from Flamingo Rd to Hiatus Rd - FM#						Funding Source: FEDERAL			
	Type of Work: Widening			Proposed Study: PD&E		LAP: NO	Yes	Yes	Yes	Yes
Widen from 2 to 4 lanes with median, bicycle lanes, sidewalks, lighting, landscaping, hardscape, and irrigation. Connects to 4 lane segment east of Hiatus Road. Project Sponsor: City of Miramar							MTP Page # 5-18		MTP Timeframe: 2031-2035	
PE	0	0	0	0	0	0	0	3,559,348		
ROW	0	0	0	0	0	0	0	0		
CST	0	0	0	0	0	0	0	16,178,853		
Total	0	0	0	0	0	0	0	19,738,201		
CITY: MIRAMAR				OWNERSHIP: LOCAL			Total Project Cost Estimate:		19,738,201	
38 Priority 2021-40	Sheridan St from 196th Ave to US-27 - FM#						Funding Source: STATE			
	Type of Work: Widening			Proposed Study: PD&E		LAP: NO	Yes	Yes	Yes	Yes
Widen from 2 to 4 lanes (includes sidewalk on one side). Project Sponsor: City of Pembroke Pines							MTP Page # 5-18		MTP Timeframe: 2031-2035	
PE	0	0	0	0	0	0	0	2,387,088		
ROW	0	0	0	0	0	0	0	0		
CST	0	0	0	0	0	0	0	10,850,401		
Total	0	0	0	0	0	0	0	13,237,489		
CITY: PEMBROKE PINES				OWNERSHIP: COUNTY			Total Project Cost Estimate:		13,237,489	

Phase	<2022	2022	2023	2024	2025	2026	Amount Funded	Funding Needed		
39	Ravenswood Rd from SW 42nd St to Griffin Rd - FM#						Funding Source: STATE			
2021-41	Type of Work: Widening		Proposed Study: PD&E		LAP: NO		Yes	Yes	Yes	Yes
Widen from 2 to 4 lanes. Project Sponsor: Broward MPO							MTP Page # 5-18	MTP Timeframe: 2031-2035		
PE	0	0	0	0	0	0	0	814,000		
ROW	0	0	0	0	0	0	0	3,700,000		
CST	0	0	0	0	0	0	0	3,700,000		
Total	0	0	0	0	0	0	0	8,214,000		
CITY: DANIA BEACH				OWNERSHIP: COUNTY		Total Project Cost Estimate:		8,214,000		
40	Wiles Rd from Florida's Turnpike to Powerline Rd - FM#						Funding Source: FEDERAL			
2021-42	Type of Work: Widening		Proposed Study: PD&E		LAP: NO		Yes	Yes	Yes	Yes
Widen from 4 to 6 lanes. Project Sponsor: Broward MPO							MTP Page # 5-18	MTP Timeframe: 2031-2035		
PE	0	0	0	0	0	0	0	1,474,000		
ROW	0	0	0	0	0	0	0	6,700,000		
CST	0	0	0	0	0	0	0	6,700,000		
Total	0	0	0	0	0	0	0	14,874,000		
CITY: DEERFIELD BEACH				OWNERSHIP: COUNTY		Total Project Cost Estimate:		14,874,000		
41	Rock Island Rd from McNab Rd to Commercial Blvd - FM#						Funding Source: FEDERAL			
2021-43	Type of Work: Add Lanes & Reconstruct		Proposed Study: PD&E		LAP: NO		Yes	Yes	Yes	Yes
Widen from 4 to 6 lanes with buffered bike lanes. Project Sponsor: City of Tamarac							MTP Page # 5-18	MTP Timeframe: 2031-2035		
PE	0	0	0	0	0	0	0	676,059		
ROW	0	0	0	0	0	0	0	3,072,997		
CST	0	0	0	0	0	0	0	3,072,997		
Total	0	0	0	0	0	0	0	6,822,053		
CITY: TAMARAC				OWNERSHIP: LOCAL		Total Project Cost Estimate:		6,822,053		

Phase	<2022	2022	2023	2024	2025	2026	Amount Funded	Funding Needed		
42	South Florida Rail Corridor @ Sample Rd/SR-834 - FM#						Funding Source: STATE			
2021-44	Type of Work: Grade separation		Proposed Study: PD&E		LAP: NO		Yes	Yes	Yes	Yes
Construct grade separation at railroad crossing. Project Sponsor: Broward MPO							MTP Page # 5-19	MTP Timeframe: 2036-2045		
PE	0	0	0	0	0	0	0	5,198,600		
ROW	0	0	0	0	0	0	0	23,630,000		
CST	0	0	0	0	0	0	0	23,630,000		
Total	0	0	0	0	0	0	0	52,458,600		
CITY: POMPANO BEACH				OWNERSHIP: STATE		Total Project Cost Estimate:		52,458,600		

43	FEC Rail Corridor @ Sample Rd/SR-834 - FM#						Funding Source: STATE			
2021-45	Type of Work: Grade separation		Proposed Study: PD&E		LAP: NO		Yes	Yes	Yes	Yes
Construct grade separation at railroad crossing. Project Sponsor: Broward MPO							MTP Page # 5-19	MTP Timeframe: 2036-2045		
PE	0	0	0	0	0	0	0	5,198,600		
ROW	0	0	0	0	0	0	0	23,630,000		
CST	0	0	0	0	0	0	0	23,630,000		
Total	0	0	0	0	0	0	0	52,458,600		
CITY: POMPANO BEACH				OWNERSHIP: STATE		Total Project Cost Estimate:		52,458,600		

44	FEC Rail Corridor @ Commercial Blvd/SR-870 - FM#						Funding Source: STATE			
2021-46	Type of Work: Grade separation		Proposed Study: PD&E		LAP: NO		Yes	Yes	Yes	Yes
Construct grade separation at railroad crossing. Project Sponsor: Broward MPO							MTP Page # 5-19	MTP Timeframe: 2036-2045		
PE	0	0	0	0	0	0	0	5,198,600		
ROW	0	0	0	0	0	0	0	23,630,000		
CST	0	0	0	0	0	0	0	23,630,000		
Total	0	0	0	0	0	0	0	52,458,600		
CITY: OAKLAND PARK				OWNERSHIP: STATE		Total Project Cost Estimate:		52,458,600		

Phase	<2022	2022	2023	2024	2025	2026	Amount Funded	Funding Needed		
45	Priority	Atlantic Blvd @ Powerline Rd - FM#					Funding Source: STATE			
2021-47	Type of Work:	Intersection improvements		Proposed Study: PD&E		LAP: NO	Yes	Yes	Yes	Yes
Construct center turn overpass. Relieve congestion from left turns. Project Sponsor: Broward MPO							MTP Page # 5-19	MTP Timeframe: 2036-2045		
PE	0	0	0	0	0	0	0	9,900,000		
ROW	0	0	0	0	0	0	0	45,000,000		
CST	0	0	0	0	0	0	0	45,000,000		
Total	0	0	0	0	0	0	0	99,900,000		
CITY: POMPANO BEACH				OWNERSHIP: STATE		Total Project Cost Estimate:		99,900,000		
46	Priority	SR-820/PINES BLVD. @ SR-817/UNIVERSITY DR - FM# 4465871					Funding Source: STATE			
2021-48	Type of Work:	PD&E/EMO STUDY		Proposed Study: PD&E		LAP: NO	Yes	Yes	Yes	Yes
2021 MPO PRIORITY #48 IS R/W NEEDED							MTP Page # 5-19	MTP Timeframe: 2036-2045		
PDE	0	0	610,000	500,000	1,500,000	0	2,610,000	0		
PE	0	0	0	0	0	2,010,000	2,010,000	0		
PE	0	0	0	0	0	0	0	5,280,000		
ROW	0	0	0	0	0	0	0	45,000,000		
CST	0	0	0	0	0	0	0	45,000,000		
Total	0	0	610,000	500,000	1,500,000	2,010,000	4,620,000	95,280,000		
CITY: PEMBROKE PINES				OWNERSHIP: STATE		Total Project Cost Estimate:		99,900,000		
47	Priority	Hallandale Beach Blvd Bypass from Dixie Highway to US-1 - FM#					Funding Source: STATE			
2021-49	Type of Work:	Add Lanes & Reconstruct		Proposed Study: PD&E		LAP: NO	Yes	Yes	Yes	Yes
Add EB to NB left-turn lane at US-1. Project Sponsor: City of Hallandale Beach							MTP Page # 5-19	MTP Timeframe: 2036-2045		
PE	0	0	0	0	0	0	0	12,893,760		
ROW	0	0	0	0	0	0	0	0		
CST	0	0	0	0	0	0	0	58,608,000		
Total	0	0	0	0	0	0	0	71,501,760		
CITY: HALLANDALE BEACH				OWNERSHIP: STATE		Total Project Cost Estimate:		71,501,760		

Phase	<2022	2022	2023	2024	2025	2026	Amount Funded	Funding Needed		
48	South Florida Rail Corridor @ Atlantic Blvd/SR-814 - FM#						Funding Source: STATE			
2021-50	Type of Work: Grade Separation		Proposed Study: PD&E			LAP: NO	Yes	Yes	Yes	Yes
Construct grade separation at railroad crossing. Project Sponsor: Broward MPO							MTP Page # 5-19	MTP Timeframe: 2036-2045		
PE	0	0	0	0	0	0	0	5,198,600		
ROW	0	0	0	0	0	0	0	23,630,000		
CST	0	0	0	0	0	0	0	23,630,000		
Total	0	0	0	0	0	0	0	52,458,600		

CITY: POMPANO BEACH OWNERSHIP: STATE Total Project Cost Estimate: 52,458,600

49	South Florida Rail Corridor @ NW 62nd/Cypress Creek - FM#						Funding Source: STATE			
2021-51	Type of Work: Grade Separation		Proposed Study: PD&E			LAP: NO	Yes	Yes	Yes	Yes
Construct grade separation at railroad crossing. Project Sponsor: Broward MPO							MTP Page # 5-19	MTP Timeframe: 2036-2045		
PE	0	0	0	0	0	0	0	5,198,600		
ROW	0	0	0	0	0	0	0	23,630,000		
CST	0	0	0	0	0	0	0	23,630,000		
Total	0	0	0	0	0	0	0	52,458,600		

CITY: FORT LAUDERDALE OWNERSHIP: COUNTY Total Project Cost Estimate: 52,458,600

50	SW 196th Ave from Pines Blvd to Miramar Pkwy - FM#						Funding Source: STATE			
2021-52	Type of Work: Widening		Proposed Study: PD&E			LAP: NO	Yes	Yes	Yes	Yes
Widen from 2 to 4 lanes. Project Sponsor: Broward MPO							MTP Page # 5-20	MTP Timeframe: 2036-2045		
PE	0	0	0	0	0	0	0	4,201,855		
ROW	0	0	0	0	0	0	0	19,099,340		
CST	0	0	0	0	0	0	0	19,099,340		
Total	0	0	0	0	0	0	0	42,400,535		

CITY: MIRAMAR OWNERSHIP: LOCAL Total Project Cost Estimate: 42,400,535

Phase	<2022	2022	2023	2024	2025	2026	Amount Funded	Funding Needed		
51	Griffin Rd from Bonaventure Blvd to US-27 - FM#						Funding Source: STATE			
2021-53	Type of Work: Add Lanes & Reconstruct		Proposed Study: PD&E			LAP: NO	Yes	Yes	Yes	Yes
Widen Griffin Rd from 2 to 4 lanes (include new bike lanes, install solar lighting from I-75 to US-27). Project Sponsor: Town of Southwest Ranches							MTP Page # 5-20	MTP Timeframe: 2036-2045		
PE	0	0	0	0	0	0	0	3,938,963		
ROW	0	0	0	0	0	0	0	0		
CST	0	0	0	0	0	0	0	17,904,375		
Total	0	0	0	0	0	0	0	21,843,338		
CITY: SOUTHWEST RANCHES				OWNERSHIP: COUNTY			Total Project Cost Estimate: 21,843,338			

DRAFT

SYSTEMS MANAGEMENT /SAFETY PROGRAM



LEGEND:

 PRIORITIZED
SYSTEMS
MANAGEMENT/
SAFETY PROJECTS

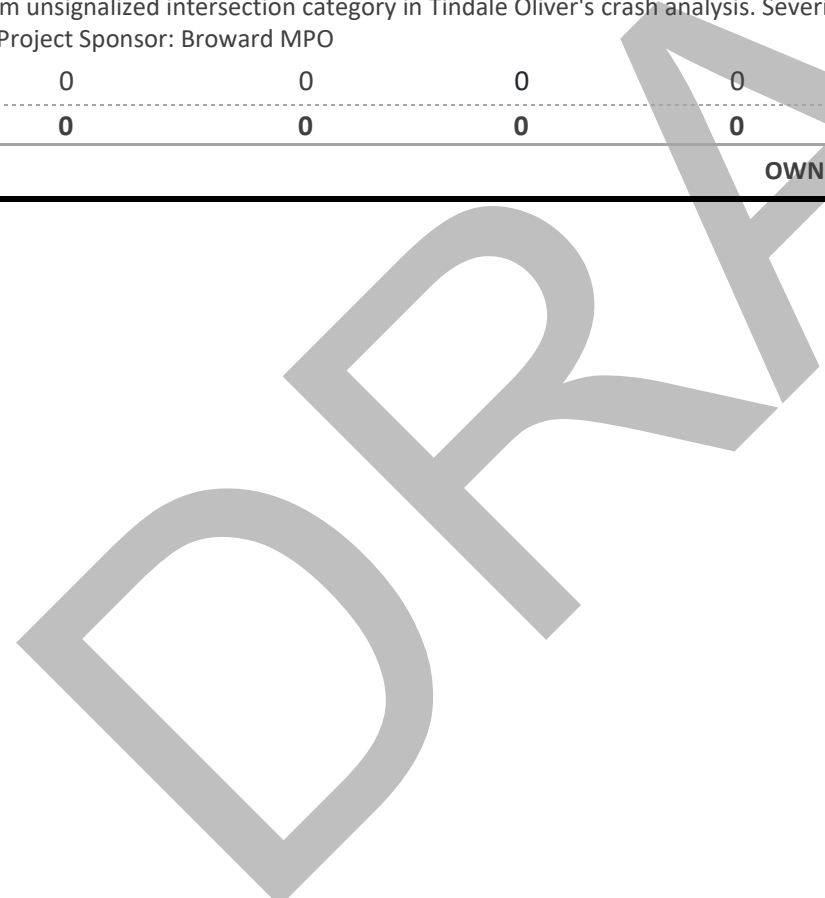


Phase	<2022	2022	2023	2024	2025	2026	Amount Funded	Funding Needed
01 Priority	MOVABLE BRIDGE INTEGRATION INTO TSM&O - VARIOUS LOCATIONS - FM# 4441201						Funding Source: STATE	
2021-03	Type of Work: PRELIMINARY ENGINEERING		Proposed Study: N/A		LAP: No		Yes Yes Yes Yes	
2021 MPO TSM&O/SAFETY PRIORITY# 3 SR-736/DAVIE BLVD BRIDGE; A1A/17TH ST BRIDGE; LAS OLAS BRIDGE; SR-816/SUNRISE BLVD BRIDGE; 32-01=CON OPS 32-02=DESIGN; 32-03=POST ASSESSMENT NO R/W NEEDED							MTP Page # 5-3	MTP Timeframe:
P.E.	0	0	732,319	47,416	690,997	0	1,470,732	0
CST	0	0	0	0	0	0	0	4,376,485
Total	0	0	732,319	47,416	690,997	0	1,470,732	4,376,485
CITY: FORT LAUDERDALE			OWNERSHIP: STATE			Total Project Cost Estimate:		5,847,217
02 Priority	SR-816/Oakland Park Blvd @ SR-7/US-4417 - FM#						Funding Source: STATE	
2021-04	Type of Work: Safety Study		Proposed Study: Safety		LAP: No		Yes N/A Yes Yes	
Total severity factor: 1143 Lighting Improvement is included in FM# 4475461.							MTP Page # 5-30	MTP Timeframe:
PLN	0	0	0	0	0	0	0	250,000
Total	0	0	0	0	0	0	0	250,000
CITY: LAUDERDALE LAKES			OWNERSHIP: STATE			Total Project Cost Estimate:		250,000
03 Priority	NW 19th St @ NW 31st Ave - FM#						Funding Source: STATE	
2021-05	Type of Work: Safety Study		Proposed Study: Safety		LAP:		Yes N/A Yes Yes	
Total severity factor: 814.5. MPO to manage.							MTP Page # 5-30	MTP Timeframe:
PLN	0	0	0	0	0	0	0	200,000
Total	0	0	0	0	0	0	0	200,000
CITY: FORT LAUDERDALE			OWNERSHIP: COUNTY			Total Project Cost Estimate:		200,000
04 Priority	N University Dr @ Wiles Rd - FM#						Funding Source: STATE	
2021-06	Type of Work: Safety Study		Proposed Study: Safety		LAP:		Yes N/A Yes Yes	
Total severity factor: 734. MPO to manage.							MTP Page # 5-30	MTP Timeframe:
PLN	0	0	0	0	0	0	0	200,000
Total	0	0	0	0	0	0	0	200,000
CITY: CORAL SPRINGS			OWNERSHIP: COUNTY/LOCAL			Total Project Cost Estimate:		200,000

Phase	<2022	2022	2023	2024	2025	2026	Amount Funded	Funding Needed
05 Priority	FDOT Signal System - FM#						Funding Source: STATE	
2021-07	Type of Work: Signal System Improvements		Proposed Study: N/A		LAP: No		Yes Yes Yes Yes	
\$169,227,273 is set aside for on-system traffic signal improvements during the 2045 MPT planning horizon. FDOT carries over project to support TSM&O projects. MTP Page # 5-30 MTP Timeframe:								
ENV,PE,CST	0	0	0	0	0	0	0	100,000,000
Total	0	0	0	0	0	0	0	100,000,000
CITY: VARIOUS			OWNERSHIP: STATE			Total Project Cost Estimate:		100,000,000
06 Priority	SR-817/UNIVERSITY DR from BRIDGE NORTH OF SOUTHGATE BLVD to SR-834/SAMPLE RD - FM#						Funding Source: STATE	
2021-New	Type of Work: Safety Study		Proposed Study: Safety		LAP: No		Yes N/A Yes N/A	
Ranked #1 on on-system corridor category in Tindale Oliver's crash analysis. Severity index per mile of 471.833 Project Sponsor: Broward MPO MTP Page # 5-30 MTP Timeframe:								
PLN	0	0	0	0	0	0	0	250,000
Total	0	0	0	0	0	0	0	250,000
CITY: CORAL SPRINGS			OWNERSHIP: STATE			Total Project Cost Estimate:		250,000
07 Priority	SR-834/SAMPLE RD from SR-817/University Dr to US 441/SR-7 - FM#						Funding Source: STATE	
2021-New	Type of Work: Safety Study		Proposed Study: Safety		LAP: No		Yes N/A Yes N/A	
Ranked #2 for on-system corridors in Tindale-Oliver's crash analysis. Severity index per mile of 433.833. Has highest number of severe injuries in category. Project Sponsor: Broward MPO MTP Page # 5-30 MTP Timeframe:								
PLN	0	0	0	0	0	0	0	250,000
Total	0	0	0	0	0	0	0	250,000
CITY: CORAL SPRINGS			OWNERSHIP: STATE			Total Project Cost Estimate:		250,000
08 Priority	W OAKLAND PARK BLVD from WELLEBY PLAZA PUBLIX ENTRANCE to N NOB HILL RD (County Roadway) - FM#						Funding Source: STATE	
2021-New	Type of Work: Safety Study		Proposed Study: Safety		LAP:		Yes N/A Yes N/A	
Ranked #2 on off-system corridor category in Tindale Oliver crash analysis. Severity index per mile - 281.48. Project Sponsor: Broward MPO MTP Page # 5-30 MTP Timeframe:								
PLN	0	0	0	0	0	0	0	250,000
Total	0	0	0	0	0	0	0	250,000
CITY: SUNRISE			OWNERSHIP: COUNTY/LOCAL			Total Project Cost Estimate:		250,000

Phase	<2022	2022	2023	2024	2025	2026	Amount Funded	Funding Needed	
09 Priority 2021-New	Pines Blvd and NW 124th Ave (N Flamingo Dr) - FM# Type of Work: Safety Study Proposed Study: Safety LAP: No						Funding Source: STATE Yes N/A Yes N/A MTP Page # 5-30 MTP Timeframe:		
Ranked #2 for on-system signalized intersections. Crash severity index of 1086.5 Project Sponsor: Broward MPO									
PLN	0	0	0	0	0	0	0	250,000	
Total	0	0	0	0	0	0	0	250,000	
CITY: PEMBROKE PINES			OWNERSHIP: STATE			Total Project Cost Estimate:		250,000	
10 Priority 2021-New	SW 13th PL and S. University Dr. - FM# Type of Work: Safety Study Proposed Study: Safety LAP: No						Funding Source: STATE Yes N/A Yes N/A MTP Page # 5-30 MTP Timeframe:		
Ranked #2 for on-system unsignalized intersections in Tindale Oliver's crash analysis. Crash severity index of 305.5 Project Sponsor: Broward MPO									
PLN	0	0	0	0	0	0	0	250,000	
Total	0	0	0	0	0	0	0	250,000	
CITY: PLANTATION			OWNERSHIP: STATE			Total Project Cost Estimate:		250,000	
11 Priority 2021-New	NW 89th Dr and Royal Palm Blvd intersection - FM# Type of Work: Safety Study Proposed Study: Safety LAP:						Funding Source: STATE Yes N/A Yes N/A MTP Page # 5-30 MTP Timeframe:		
Ranked #4 on off-system unsignalized intersection category. Severity index - 129. Has the most serious injuries out of entire Tindale-Oliver list in this category (12) Project Sponsor: Broward MPO									
PLN	0	0	0	0	0	0	0	250,000	
Total	0	0	0	0	0	0	0	250,000	
CITY: CORAL SPRINGS			OWNERSHIP: LOCAL			Total Project Cost Estimate:		250,000	
12 Priority 2021-New	CORAL RIDGE DR from SOUTH OF NW 30TH ST to HERON BAY BLVD (County Road) - FM# Type of Work: Safety Study Proposed Study: Safety LAP:						Funding Source: STATE Yes N/A Yes N/A MTP Page # 5-30 MTP Timeframe:		
Ranked #5 on off-system corridor category in Tindale Oliver crash analysis. Severity index per mile - 155.1666 Highest Crash Severity Index of off-system corridors. Has the most incapacitating crashes and the most severe injuries in category Project Sponsor: Broward MPO									
PLN	0	0	0	0	0	0	0	250,000	
Total	0	0	0	0	0	0	0	250,000	
CITY: CORAL SPRINGS			OWNERSHIP: COUNTY			Total Project Cost Estimate:		250,000	

Phase	<2022	2022	2023	2024	2025	2026	Amount Funded	Funding Needed
13 Priority 2021-New	Riverside Dr. (County Roadway) and Royal Palm Blvd intersection - FM# Type of Work: Safety Study Proposed Study: Safety LAP:						Funding Source: STATE Yes N/A Yes N/A MTP Page # 5-30 MTP Timeframe:	
	Ranked #7 in off-system signalized intersection category in Tindale Oliver crash analysis. Severity total - 510.5. 2nd highest number of incapacitating injuries (20) for off-system signalized intersections Project Sponsor: Broward MPO							
PLN	0	0	0	0	0	0	0	250,000
Total	0	0	0	0	0	0	0	250,000
CITY: CORAL SPRINGS				OWNERSHIP: COUNTY/LOCAL			Total Project Cost Estimate: 250,000	
14 Priority 2021-New	Davie Road Ext (County Roadway) and NW 78th Ave intersection - FM# Type of Work: Safety Study Proposed Study: Safety LAP:						Funding Source: STATE Yes N/A Yes N/A MTP Page # 5-30 MTP Timeframe:	
	Ranked #13 for off-system unsignalized intersection category in Tindale Oliver's crash analysis. Severity total of 109. Has the most injuries (22) in category Project Sponsor: Broward MPO							
PLN	0	0	0	0	0	0	0	250,000
Total	0	0	0	0	0	0	0	250,000
CITY: HOLLYWOOD				OWNERSHIP: COUNTY/LOCAL			Total Project Cost Estimate: 250,000	

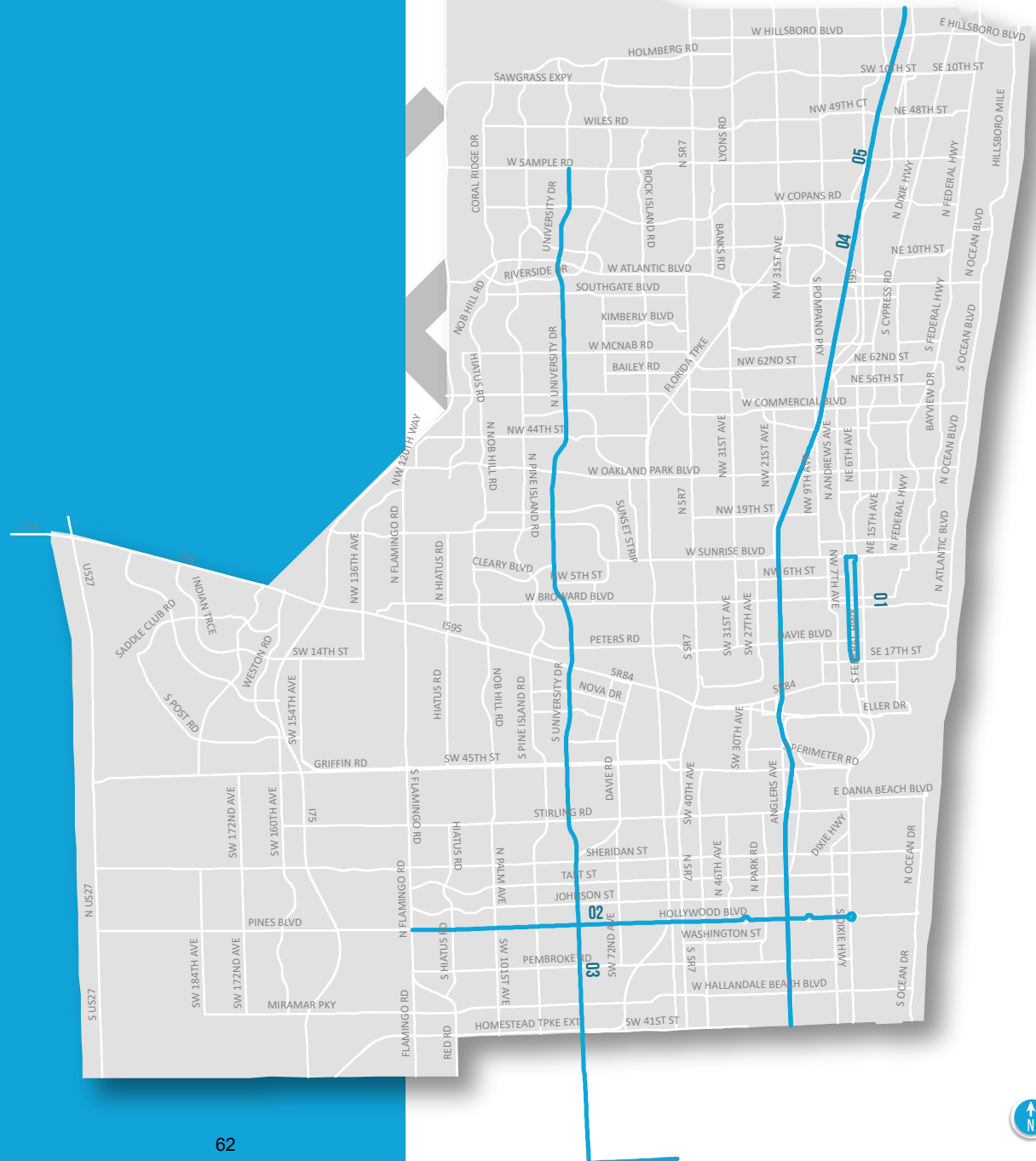


TRANSIT PROGRAM



LEGEND:

 PRIORITIZED TRANSIT PROJECTS



Phase	<2022	2022	2023	2024	2025	2026	Amount Funded	Funding Needed	
01 Priority	Andrews & 3rd Avenues Mobility Improvements SE 17th Street to Sunrise Blvd - FM#						Funding Source: FEDERAL AND LOCAL		
2021-01	Type of Work: Feasibility Study		Proposed Study: Feasibility		LAP: No		Yes No Yes No		
Reconfigure streets to be oneway oriented, with shared use path, transit-only lane, lighting, stormwater, transit, crosswalks. Potential Surtax project. Project remains on MMPL to supplement funds. Coordination is still under way. Project Sponsor: City of Fort Lauderdale									
PE	0	0	0	0	0	0	0	10,000,000	
Total	0	0	0	0	0	0	0	10,000,000	
CITY: FORT LAUDERDALE				OWNERSHIP: COUNTY		Total Project Cost Estimate: 10,000,000			
02 Priority	Hollywood/Pines Blvd. Rapid Bus from Flamingo Rd. (Pembroke Pines) to Hollywood (Young Circle) - FM#						Funding Source: STATE AND LOCAL		
2021-02	Type of Work: Transit Improvement		Proposed Study: N/A		LAP: No		Yes Yes Yes No		
Implement 10-15 min limited stop bus service, mixed traffic or semiexclusive Business Access and Transit (BAT) lanes, level boarding stations, use of Transit Signal Priority (TSP)/Queue Jump technologies, mobile ticketing. County is seeking federal funds and need to finalize components and coordination. Project Sponsor: Broward County									
PE	0	0	0	0	0	0	0	3,074,180	
CST	0	0	0	0	0	0	0	61,483,599	
Total	0	0	0	0	0	0	0	64,557,779	
CITY: HOLLYWOOD/PEMBROKE PINES				OWNERSHIP: STATE		Total Project Cost Estimate: 64,557,779			
03 Priority	University Dr Rapid Bus from Coconut Creek (Sample Rd) to MiamiDade Co (Golden Glades) - FM#						Funding Source: STATE AND LOCAL		
2021-03	Type of Work: Transit Improvement		Proposed Study: N/A		LAP: No		Yes Yes Yes No		
Implement 10-15 min limited stop bus service, mixed traffic or semiexclusive Business Access and Transit (BAT) lanes, level boarding stations, use of Transit Signal Priority (TSP)/Queue Jump technologies, mobile ticketing. County is seeking federal funds and need to finalize components and coordination. Project Sponsor: Broward County									
PE	0	0	0	0	0	0	0	5,509,339	
CST	0	0	0	0	0	0	0	110,186,775	
Total	0	0	0	0	0	0	0	115,696,114	
CITY: CORAL SPRINGS/COOPER CITY/DAVIE/LAUDERHILL/MIRAMAR/PLANTATION/PEMBROKE PINES/TAMARAC/SUNRISE				OWNERSHIP: STATE		Total Project Cost Estimate: 115,696,114			

Phase	<2022	2022	2023	2024	2025	2026	Amount Funded	Funding Needed		
04	ROLLING STOCK - FM# 4481021						Funding Source: FEDERAL			
2021-04	Type of Work: PURCHASE VEHICLES/EQUIPMENT		Proposed Study:			LAP: No	Yes	Yes	Yes	Yes
2021 TRIP SEFTC #7; 2021 MPO TRANSIT PRIORITY # 4 FLEX TO SFRTA; JPA WITH SFRTA							MTP Page #	MTP Timeframe: 2036-2045		
Cap Improv./Ope.	0	0	0	0	0	5,000,000	5,000,000	0		
Cap Improv./Ope.	0	0	0	0	0	0	0	19,333,333		
Total	0	0	0	0	0	5,000,000	5,000,000	19,333,333		
CITY: SFRTA				OWNERSHIP: SFRTA			Total Project Cost Estimate: 24,333,333			
05	Tri-Rail Mobile Ticketing and Fare Verification - FM#						Funding Source: FEDERAL			
2021-05	Type of Work: Transit Improvement		Proposed Study: N/A			LAP: No	Yes	Yes	Yes	Yes
Fund Mobile Ticketing and Fare Verification Equipment. As any available funds are allocated to this project, we suggest they be flexed to FTA under the SFRTA account. Project Sponsor: SFRTA							MTP Page # 5-29	MTP Timeframe: 2036-2045		
PE	0	0	0	0	0	0	0	125,000		
CST	0	0	0	0	0	0	0	2,500,000		
Total	0	0	0	0	0	0	0	2,625,000		
CITY: SFRTA				OWNERSHIP: SFRTA			Total Project Cost Estimate: 2,625,000			

4

FLORIDA'S TURNPIKE

LIST OF PRIORITIES



**Vision Plan
Project List**

TURNPIKE MAINLINE / SR 91 (MP 0X - MP 4X and MP 47 - MP 88)

10-Year Finance Plan Projects

System / Facility	Category	County	FPN	Limits (From / To)		Project Description	Existing Deficiency / Yr Needed	PH 22 Yr	PH 32 Yr	PH 52 Yr	PH 22 Funding (\$K)	PH 32 Funding (\$K)	PH 52 Funding (\$K)	Source (FP, TT, Other)
Turnpike Mainline / SR 91	TSM&O	Broward	446223-1	MP 47 - Turnpike Mainline / SR 821	MP 51 - Johnson St	TSM&O Add auxiliary lanes Includes interchange improvement: ◆ MP 49 - Hollywood Blvd / Pines Blvd / SR 820	Existing Deficiency	Complete	Complete	2024	-	-	\$54,970	10-yr FP
Turnpike Mainline / SR 91	TSM&O	Broward	446224-1	MP 51 - Johnson St	MP 53 - Griffin Rd / SR 818	TSM&O Add auxiliary lanes	Existing Deficiency	Complete	Complete	2024	-	-	\$68,036	10-yr FP
Turnpike Mainline / SR 91	TSM&O	Broward	415927-4	MP 71 - Sawgrass Expwy / SR 869	MP 73 - Broward / Palm Beach CL	TSM&O Add auxiliary lanes	Existing Deficiency	Complete	2024	2025	-	\$450	\$37,123	10-yr FP
Turnpike Mainline / SR 91	Interchange	Broward	446224-2	-	-	TSM&O Interchange improvement: ◆ MP 53 - Griffin Rd / SR 818	2025	-	-	2026	-	-	\$9,628	10-yr FP
Turnpike Mainline / SR 91	Interchange	Broward	444301-1	-	-	TSM&O Interchange improvement: ◆ MP 69 - Sample Rd / SR 834	Existing Deficiency	-	Complete	2022	-	-	\$2,474	10-yr FP

Unfunded Projects

System / Facility	Category	County	FPN	Limits (From / To)		Project Description	Existing Deficiency / Yr Needed	PH 22 Yr	PH 32 Yr	PH 52 Yr	PH 22 Funding (\$K)	PH 32 Funding (\$K)	PH 52 Funding (\$K)	Source (FP, TT, Other)
Turnpike Mainline / SR 91	Widening	Broward	423373-6	MP 3.3 - Miami-Dade / Broward CL	MP 3.6/47 - Turnpike Mainline / SR 821	Widen to 8 lanes Interchange improvement: ◆ MP 47 - Turnpike Mainline / SR 821	2030	-	-	2031	-	-	\$80,725	10-yr FP
Turnpike Mainline / SR 91	Widening	Broward	406095-1 ² 406099-1	MP 47 - Turnpike Mainline / SR 821	MP 51 - Johnson St	Widen to 10 lanes w/ML Includes interchange improvement: ◆ MP 49 - Hollywood Blvd / Pines Blvd / SR 820	Existing Deficiency	-	Complete	-	-	-	-	10-yr FP
Turnpike Mainline / SR 91	Widening	Broward	406095-4 ²	MP 51 - Johnson St	MP 53 - Griffin Rd / SR 818	Widen to 10 lanes w/ML	Existing Deficiency	-	Complete	-	-	-	-	10-yr FP
Turnpike Mainline / SR 91	Widening	Broward	442212-1 ²	MP 54 - I-595 / SR 84 / US 441	MP 70 - Wiles Rd	Widen from 6/8 to 10/12 lanes w/ML Includes interchange improvements: ◆ MP 62 - Commercial Blvd / SR 870 ◆ MP 67 - Coconut Creek Pkwy / ML King Blvd ◆ MP 69 - Sample Rd / SR 834 Includes new interchanges: ◆ MP 61 - Oakland Park Blvd ◆ MP 63 - Cypress Creek Rd	Existing Deficiency	Complete	-	-	-	-	-	10-yr FP
Turnpike Mainline / SR 91	Widening	Broward	415927-1 ²	MP 71 - Sawgrass Expwy / SR 869	MP 73 - Broward / Palm Beach CL	Widen to 10 lanes w/ML	Existing Deficiency	-	Complete	-	-	-	-	10-yr FP
Turnpike Mainline / SR 91	TSM&O / Auxiliary lanes	Broward	-	MP 47 - Turnpike Mainline / SR 821	MP 71 - Sawgrass Expwy / SR 869	TSM&O / Auxiliary lanes	Existing Deficiency	-	-	-	-	-	-	Traffic Trends

Projects Proposed/Funded by Others

System / Facility	Category	County	FPN	Limits (From / To)		Project Description	Existing Deficiency / Yr Needed	PH 22 Yr	PH 32 Yr	PH 52 Yr	PH 22 Funding (\$K)	PH 32 Funding (\$K)	PH 52 Funding (\$K)	Source (FP, TT, Other)
Turnpike Mainline / SR 91	Interchange	Broward	N/A	-	-	New interchange: ◆ MP 52 - Stirling Rd	-	-	-	-	-	-	-	Seminole Tribe Request

¹ Project requires coordination with local government

² Project requires coordination with FGT

³ Partnership project

Vision Plan
Project List

SAWGRASS EXPRESSWAY / SR 869

10-Year Finance Plan Projects

System / Facility	Category	County	FPN	Limits (From / To)		Project Description	Existing Deficiency / Yr Needed	PH 22 Yr	PH 32 Yr	PH 52 Yr	PH 22 Funding (\$K)	PH 32 Funding (\$K)	PH 52 Funding (\$K)	Source (FP, TT, Other)
Sawgrass Expressway / SR 869	Widening	Broward	437155-5	MP 0 - South of NW 8th St	MP 0.5 - South of Sunrise Blvd / SR 838	Widen from 6 to 10 lanes Includes new interchange: ◆ MP 0 - NW 8th St	Existing Deficiency	-	2022-24	2026	-	\$4,090	\$83,745	10-yr FP
Sawgrass Expressway / SR 869	Widening	Broward	437155-1	MP 0.5 - South of Sunrise Blvd / SR 838	MP 4.1 - North of Oakland Park Blvd / SR 816	Widen from 6 to 10 lanes Includes interchange improvements: ◆ MP 1 - Sunrise Blvd / SR 838 ◆ MP 2.5 - Pat Salerno Dr ◆ MP 3 - Oakland Park Blvd	Existing Deficiency	Complete - 2017	2022-24	2025	-	\$5,290	\$186,411	10-yr FP
Sawgrass Expressway / SR 869	Widening	Broward	437155-6	MP 4.1 - North of Oakland Park Blvd / SR 816	MP 6.6 - North of Commercial Blvd / SR 870	Widen from 6 to 10 lanes Includes interchange improvements: ◆ MP 5 - Commercial Blvd	Existing Deficiency	-	-	2026	-	-	\$67,488	10-yr FP
Sawgrass Expressway / SR 869	Interchange	Broward	443956-1	MP 6.6 - North of Commercial Blvd / SR 870	MP 9 - North of Atlantic Blvd / SR 814	Widen from 6 to 10 lanes Includes interchange improvement: ◆ MP 8 - Atlantic Blvd / SR 814	2025	Complete - 2017	Complete	2022	-	-	\$52,181	10-yr FP
Sawgrass Expressway / SR 869	Widening	Broward	435461-1	MP 9 - North of Atlantic Blvd / SR 814	MP 12 - North of Sample Rd / SR 834	Widen from 6 to 10 lanes Includes interchange improvements: ◆ MP 11 - Sample Rd	2025	-	-	2024	-	-	\$80,024	10-yr FP
Sawgrass Expressway / SR 869	Widening	Broward	435461-4	MP 12 - North of Sample Rd / SR 834	MP 14.8 - South of University Dr / SR 817	Widen from 6 to 10 lanes Includes interchange improvements: ◆ MP 14 - Coral Ridge Dr	2030	-	-	2026	-	-	\$86,613	10-yr FP
Sawgrass Expressway / SR 869	Widening	Broward	435461-5	MP 14.8 - South of University Dr / SR 817	MP 18.4 - South of US 441	Widen from 6 to 10 lanes Includes interchange improvement: ◆ MP 15 - University Dr / SR 817	Existing Deficiency	-	-	2026	-	-	\$103,933	10-yr FP
Sawgrass Expressway / SR 869	Widening	Broward	437224-1	MP 18.4 - South of US 441	MP 22 - Powerline Rd	Widen from 6 to 10 lanes w/CD Includes interchange improvements: ◆ MP 18 - US 441 ◆ MP 19 - Lyons Rd ◆ MP 21 - Turnpike Mainline / SR 91 / SW 10th St	2025	Underway	2022-25	2027	-	\$39,640	\$503,643	10-yr FP

Partnership Projects

System / Facility	Category	County	FPN	Limits (From / To)		Project Description	Existing Deficiency / Yr Needed	PH 22 Yr	PH 32 Yr	PH 52 Yr	PH 22 Funding (\$K)	PH 32 Funding (\$K)	PH 52 Funding (\$K)	Source (FP, TT, Other)
SW 10th Street Connector	New Construction	Broward	439891-1 ^{3(D4)}	Turnpike Mainline / SR 91	I-95	New road construction	Existing Deficiency	Complete	-	2025	-	-	\$100,450	10-yr FP
Sawgrass Expressway / SR 869	Interchange	Broward	437155-1	-	-	Interchange improvement: ◆ MP 2.5 - Pat Salerno Dr	-	-	-	2025	-	-	Included with 437155-1	City of Sunrise Request

¹ Project requires coordination with local government

² Project requires coordination with FGT

³ Partnership project