

MULTIMODAL PRIORITIES LIST

DRAFT FY 2025 Priorities List (to be used in the development of the next TIP FY 2026)

Anticipated to be approved: 6/13/2024

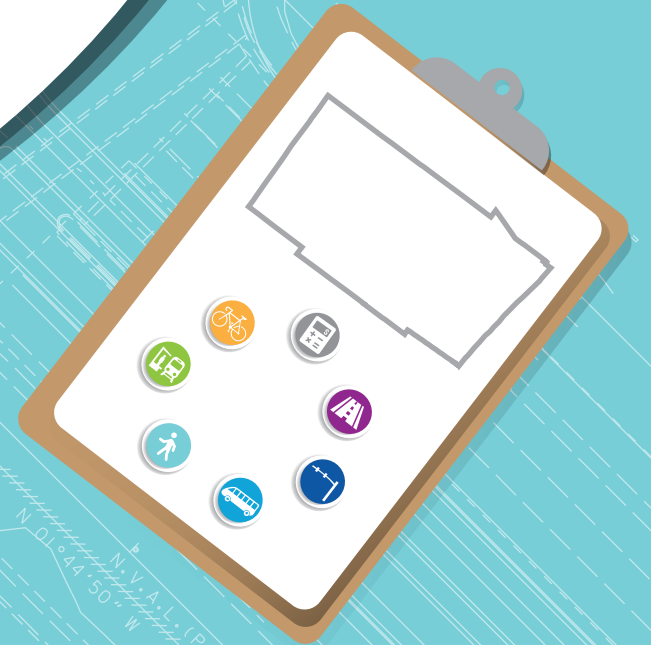


TABLE OF CONTENTS

1. Overview.....	1
2. Project Prioritization.....	5
3. Broward MPO Priority List.....	8
Unified Planning Work Program (UPWP).....	9
Complete Streets and other Localized Initiatives (CSLIP).....	11
Complete Streets Master Plan (CSMP).....	24
Mobility Hubs (HB).....	35
Roadway.....	37
Systems Management/Safety.....	57
Transit.....	60
4. Florida's Turnpike Priority List.....	63



OVERVIEW

DEVELOPMENT

The Broward Metropolitan Planning Organization (MPO) is required to develop a Multimodal Priority List (MMPL) in coordination with Florida Department of Transportation (FDOT) District Four planning staff. The list is submitted to the District by August 1 annually [s.339.175 (8)(a) and (b), F.S.]. FDOT uses the MMPL to develop the Draft Tentative Work Program (DTWP) that is presented to the MPO each fall, which in turn is used to develop the following year's Transportation Improvement Program (TIP). The Fiscal Year (FY) 2025 MMPL is used to develop the FY 2026-2030 DTWP and the FY 2026-2030 Broward MPO TIP.

The MMPL is a core product of the MPO that serves as a bridge between the MPO's Long Range Transportation Plan (LRTP)/Metropolitan Transportation Plan (MTP) and the TIP. Figure 1 shows the Broward MPO core product development process. The MMPL is used to set funding priorities for federal and state funds within our region. Only projects contained in the MTP are eligible for inclusion on the MMPL. Figure 2 presents the relationship among MTP, MMPL, and TIP.

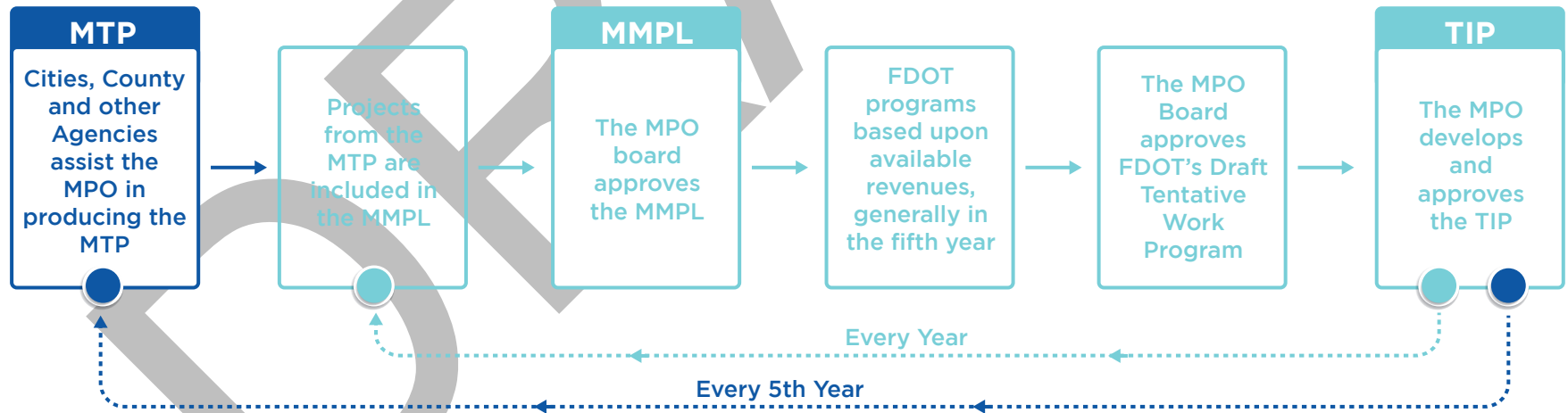


Figure 1 Core Product Development Process



Figure 2 Relationship among MTP, MMPL and TIP

The 2045 MTP was approved at the December 2019 MPO Board meeting. The Cost Feasible Plan, as a component of the MTP including a list of prioritized projects, was approved with it. The Cost Feasible Plan includes six funding programs in order to account for the region’s multimodal transportation needs. To be consistent with the 2045 MTP and the funding sources assumed in the financial plan of the 2045 MTP, the MMPL is organized by six funding programs. It utilizes the 2045 MTP’s allocations for the Broward MPO’s attributable funds as shown in Table 1.

Table 1 Programs and funding allocation

Program	Allocation
Highway/Roadway	20%
Transit	10%
Systems Management/Safety	15%
Complete Streets and other Localized Initiatives Program (CSLIP)	20%
Complete Streets Master Plan (CSMP)	25%
Mobility Hubs	10%
Total	100%

In addition, the MMPL assigns a preferred funding source for each prioritized project that is consistent with the 2045 MTP’s cost feasible plan. The funding sources are indicated as State, Federal, Local or any combination of the three. To facilitate project delivery, the MMPL emphasizes a “Program Ready” concept. “Program ready” means that a project includes a clear scope of work, approved resolution, cost estimate, and collaboration with partners. Projects that meet all of these four criteria are eligible for funding. For an example of how these concepts are illustrated in the MMPL, please refer to Figure 3.

UNIFIED PLANNING WORK PROGRAM (UPWP)

Besides the six programs mentioned earlier, funding for the Broward MPO’s Unified Planning Work Program (UPWP)/budget is top priority. The MPO’s UPWP contains the agency’s Strategic Business Plan activities, planning efforts, and operating budget for a two-year period. The UPWP includes a description of the planning work and resulting products, who will perform the work, time frames for completing the work, the cost of the work, and the source(s) of funds. Further, the UPWP provides a comprehensive picture to citizens and stakeholders who wish to see how federal and state transportation planning dollars are to be spent by the Broward MPO, local governments, and transit agencies providing services to Broward. The UPWP is developed by MPO staff in consultation with partner agencies, municipal staff, and input from local citizens and stakeholders. The information collected is incorporated into the UPWP and budgeted accordingly. To support services that the MPO provides to the Broward region, the Broward MPO assigns Surface Transportation Program – Urban areas >200K (SU) funds to the UPWP. Available MPO attributable funds for the six programs excludes SU funds already allocated to UPWP.

HOW TO READ THE BROWARD MPO PRIORITY LIST

A Priority
 Current Program Priority → **21** Priority 2021-27
 ↑ ↑
 Prior Year Program Priority
22 Priority 2021-New
 ↑
 Projects newly added project to the MMPL will be designated as "New".

B Project Characteristics
 Project Name with Limits
 Type of Work
 Description with Project Sponsor
 Proposed Study
 City
 Ownership
 LAP
 Lead Agency

C Financial Information
 Phase
 Year Funds are Programmed
 Amount Funded
 Funding Needed
 Total Project Cost

D Funding Source

- State Funds
- Federal Funds
- Local Funds
- State and Local Funds
- State and Federal Funds
- Federal and Local Funds
- Federal, State, and Local Funds

E Program Readiness
 Green "Yes" indicates project meets criteria
 Red "No" indicates project does not meet criteria

Scope of work: Yes
 Resolution: No
 Cost Estimate: Yes
 Collaboration among partners: No

F MTP Reference
 MTP Page Number
 MTP Timeframe:
 2021-2025 ← Indicates projects programmed in FDOT's Work Program
 2026-2030
 2031-2035
 2036-2045 ← Indicates MTP's final timeframe

Roadway							Roadway MPO Adopted Program Funding Goal 20%	
Phase	<2025	2025	2026	2027	2028	2029	Amount Funded	Funding Needed
22 Priority 2024-27	SR-858/HALLANDALE BEACH BLVD @ NE 14 AVE - FM# 4495651 Type of Work: ADD LEFT TURN LANE(S) Proposed Study: PD&E						Funding Source: State	
	Program Direction: 2023 MPO ROADWAY PRIORITY# 27- CITY OF HALLANDALE BEACH FEASIBILITY STUDY: IMPLEMENT DUAL LEFT TURN LANE EASTBOUND FROM FB HALLANDALE BEACH BLVD TO NB NE 14TH AVE. R/W NEEDED						LAP: No	Lead Agency: FDOT
							MTP Page # 5-15	MTP Timeframe: 2026-2030
	0	0	0	75,000	0	0	75,000	0
	0	0	0	0	0	394,000	394,000	0
	0	0	0	0	0	0	0	1,673,325
	0	0	0	0	0	0	0	1,673,325
Total	0	0	0	75,000	0	394,000	469,000	3,346,650
City: Hallandale Beach							Total Project Cost Estimate: 3,815,650	
23 Priority 2024-28	South Florida Rail Corridor @ Copans Rd - FM# Type of Work: Grade separation Proposed Study: PD&E						Funding Source: State	
	Program Direction: Move forward with programming to access grant funding. Current coordination with FDOT and Broward County with existing Railroad Crossing Elimination Program Grant. This project could change in priority following conversation with FDOT prior to MPO Board approval.						LAP: No	Lead Agency: FDOT
	Construct grade separation at railroad crossing. Feasibility study is currently in Work Program. FDOT rail office is looking at grade separation in multiple locations. Project Sponsor: Broward MPO						MTP Page # 5-15	MTP Timeframe: 2026-2030
	0	0	0	0	0	0	0	5,198,600
	0	0	0	0	0	0	0	23,630,000
	0	0	0	0	0	0	0	23,630,000
Total	0	0	0	0	0	0	0	52,458,600
City: Pompano Beach							Total Project Cost Estimate: 52,458,600	

Program Direction
 Program Direction is included to give specific instructions on how to program funds for the respective project.

Program Funding Allocation
 The program funding allocation for each respective program is listed at the top of the page for reference. The 2045 MTP's allocations for the Broward MPO's attributable funds are shown in Table 1.

Program Threshold
 Program Thresholds are identified in each program where the amount of program ready projects listed exceed the program funding allocation of available MPO attributable funds. Projects Beyond the program threshold will not receive new funding this MMPL Cycle.

FIGURE 3 SAMPLE OF MMPL

PROJECT PRIORITIZATION

The 2035 LRTP established a new paradigm to provide a balanced transportation system with greater investments toward alternative modes such as transit, bicycle and pedestrian facilities, and smart growth policies. Both the Commitment 2040 and MTP 2045 follow this set standard. In order to guarantee that the transportation investments are balanced among the transportation modes, percentages agreed upon in the MTP 2045 by the MPO Board (during the MTP's development) were used to distribute revenue among the six programs. Projects within each program were prioritized according to criteria established for each individual program. The following describes the prioritization process for each of the six programs.

COMPLETE STREETS AND OTHER LOCALIZED INITIATIVES PROGRAM (CSLIP)

CSLIP provides funding for small local transportation projects that will improve safety and mobility for all transportation users. The MPO facilitates this annual competitive grant program to fund projects such as Complete Streets projects, traffic calming and intersection improvements, ADA compliance upgrades, bike racks, and technology advancements (e.g., transit signal priority and traffic control devices). Projects funded through this program have a cap of \$3 million in construction costs per project.

CSLIP uses an objective tool to evaluate and rank the application submitted. This tool was developed with direction from the Board and uses several geographic datasets to score the projects. Evaluation criteria weights are 20% for safety, 20% for accessibility, 17% for equity, 17% for mobility, 13% for economic vitality, and 13% for environmental stewardship.



For CSLIP details, please visit the CSLIP policies link at: https://www.browardmpo.org/images/WhatWeDo/CSLIP/Round_6_Policies.pdf and the evaluation chart at: https://www.browardmpo.org/images/WhatWeDo/CSLIP/CSLIP_Evaluation_Criteria_Table.pdf



For CSMP details, please refer to the CSMP prioritization criteria link at: http://www.browardmpo.org/images/CSMP/CSMP_prioritization_criteria.pdf

COMPLETE STREETS MASTER PLAN (CSMP)

Complete streets are built for all users, emphasizing the safe and efficient movement of people including pedestrians, bicyclists, and transit riders. The MPO developed a CSMP to guide future investments by creating a prioritized list of projects based on technical, data-driven analysis and community input. Funding is allocated to this program based on the prioritized order established in the CSMP. Projects funded through this program are generally greater than \$2 million.

Prioritization is a process of scoring and ranking the Complete Streets projects and Super Connectors based on identified criteria or variables. The criteria is consistent with the goals and objectives established in the Commitment 2040 LRTP, continues in the Commitment 2045 MTP, and builds upon the format and content of the CSLIP evaluation criteria. The criteria between the two differ slightly but fit within the same theme.

ROADWAY & TRANSIT PROGRAMS

Funding for the roadway program is allotted to transportation improvements that increase roadway capacity by building new roadways, adding lanes to existing roadways, or building/expanding interchanges and major intersections. Funding may also be allocated to concept studies, preliminary engineering, and design to support the development of roadway capacity projects. The transit funding program includes transit capital investments such as transit vehicles, transit technology investments (e.g., fare collection equipment, automatic passenger counters, vehicle location, etc.), and roadway improvements designed to serve as exclusive lanes for transit services (for which operating funding has been identified).

Projects in the Roadway Program and Transit Program follow the same prioritization process established in the MTP 2045. The prioritization criteria is based upon the MTP's Goals and Objectives, adopted by the MPO Board on May 10, 2018, and the Performance Measures developed to ensure consistency with the FAST Act. These six measures, which are referred to as planning factors, were identified as best representing the MTP's Goals and Objectives they are: (1) Mobility: Providing high speed and reliable travel between major activity centers and destinations. The focus of mobility is to get from one place to another as quickly as possible and typically is characterized by longer trips. (2) Accessibility: Providing access and circulation within higher-density, mixed-use places; tend to be shorter trips. (3) Safety: Reducing the number and severity of crashes. (4) Equity: Ensuring that benefits and impacts are shared among Broward's population. (5) Environmental Stewardship: Protecting the natural and built environment. (6) Economic Vitality: Supporting economic activity and businesses.

Each of the six planning factors were given a weighted value to align it with its importance to the community. The weighting values were determined through an interactive polling process with the Technical Advisory Committee (TAC), the Citizens' Advisory Committee (CAC), and the MPO Board. The values obtained were averaged and resulted: Mobility – 20.5, Accessibility – 20.8, Safety – 18.7, Equity – 14.3, Environmental Stewardship – 12.8, and Economic Vitality – 13.0. Six matrixes with prioritization criteria were developed for each planning factor respectively. These matrixes include evaluation criteria, assessment scoring, and scoring guidelines. Through several discussions with the TAC and CAC, the prioritization criteria were revised and shown in tables 1 through 6 in the Technical Report #4 Project Prioritization Process.

Several key changes that resulted from this process were:

- The inclusion of additional Safety criteria to better reflect the importance of this issue;
- The addition of a positive criteria for projects that may improve environmental conditions;
- Clarifications to several criteria to ensure that both roadway and transit projects were evaluated; and
- Adjustments to the Sea Level Rise Mitigation criteria to account for projects that improve the resiliency of infrastructure to extreme weather, regardless of the project's location in a defined vulnerability area.

It is important to note that whereas this process has been developed for the 2045 MTP, these prioritization criteria and planning factor weightings can change over time as the Emphasis Areas stressed by the federal and state government change and local stakeholder preferences change. Future MTPs will address these changes with adjustments to these factors. In addition to an overall process, the Broward MPO project prioritization criteria were developed with the following considerations:

- Projects are to be evaluated regardless of their mode (roadway, transit, Transportation Systems Management and Operations (TSM&O), etc.).
- Scores are to be normalized to account for variance in maximum points awarded in each planning factor group.
- An initial recommendation of rounding negative scores to 0 was reconsidered at the TAC's request to better reflect the potential negative impacts of a project. Thus, negative scores are carried through.



SYSTEMS MANAGEMENT/SAFETY PROGRAM

Funding allocated to this program is to be focused on Transportation Systems Management and Operations (TSM&O), a program based on actively managing the multimodal transportation network, measuring performance, streamlining and improving the existing system, promoting effective cooperation/collaboration, and delivering positive safety and mobility outcomes to the traveling public. Example projects funded in this program include signal timing/coordination and major safety improvements. Funding in this program is also set aside to support studies to identify, prioritize, and implement safety improvements.


TSM&O projects on-state highway system were selected and prioritized by the FDOT. Safety improvement study projects were selected and prioritized according to the severity index as part of the Commitment 2045 MTP. The severity index is a measure that looks at total crashes and crash severity. It uses a weighted average (higher score for incapacitating and fatal crashes) to develop an index that ranks locations in terms of their importance for future safety analysis and improvements. The safety improvement projects identified through safety studies will be eligible for funding allocated to the Systems Management/Safety Program, as discussed previously. MPO staff are coordinating with FDOT District 4 and other local partners to lead these studies in the near future.

MOBILITY HUB PROGRAM

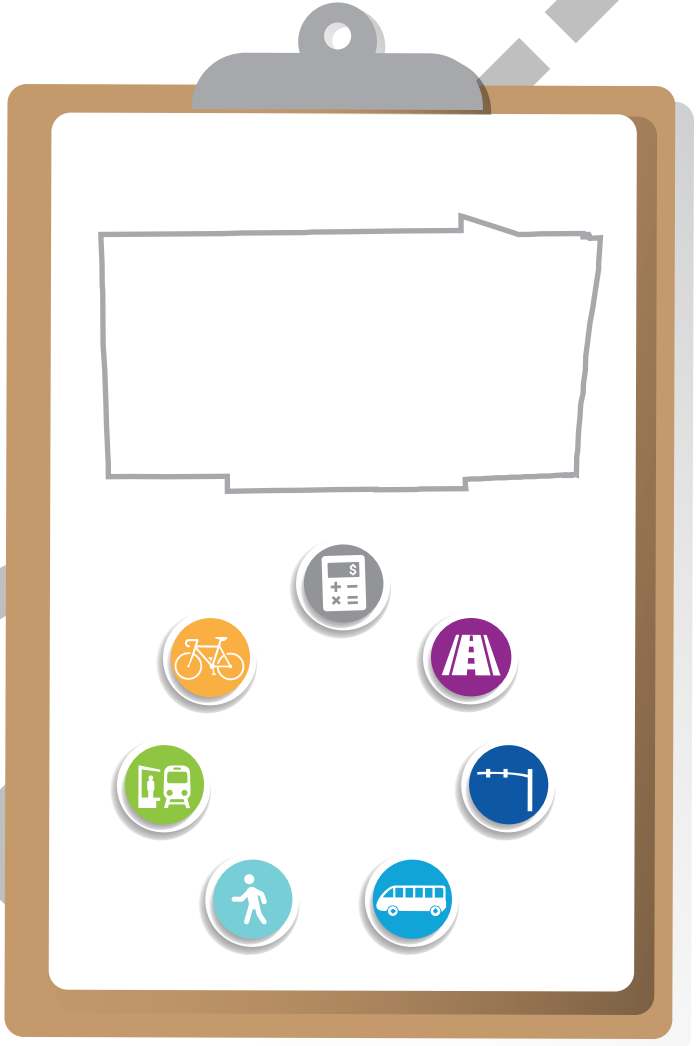
The Mobility Hub concept was initially introduced in the 2035 LRTP. The Mobility Hub program continues to be included in the 2040 LRTP and 2045 MTP. Mobility Hubs are transit access points with frequent transit service, high development potential, and a critical point for travel demand or transfers within the transit system. Funding through this program is available to help support the collaborative development of Mobility Hubs as communities identify and commit to opportunities that further the objectives of this program.

Prioritization of Mobility Hub projects is based on identified criteria or variables. Guided by the goals in the 2045 MTP, the recommended evaluation framework measures a candidate location's existing market and network readiness by incorporating the best available information into the evaluation matrix for review. The matrix includes measures of existing trip producers and attractors, potential trip producers, market ready attractors, existing transit ridership, and frequency. The prediction of theoretical future service would not be the driving factor for the evaluation although potential service is a consideration. The third factor in the evaluation is sponsor readiness, which is the willingness of the local government to support Mobility Hub investment.

 For Systems Management/Safety details, please refer to 2045 MTP at: <http://www.browardmpo.org/index.php/mtp-documents>

 For Mobility Hub details, please refer to the Revisit & Update Mobility Hubs Program - Assess Current Methodology Technical Memorandum link at: http://www.browardmpo.org/images/2-TM1-Mobility_Hubs_Revisit-Assess_Current_Methodology-January_2018_FINAL.pdf

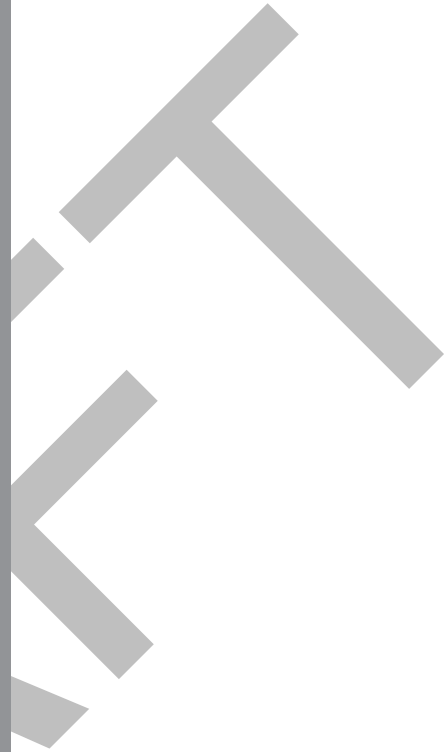
BROWARD MPO PRIORITY LIST



UPWP

UNIFIED PLANNING WORK PROGRAM

PROGRAM



Phase	<2025	2025	2026	2027	2028	2029	Amount Funded	Funding Needed
-------	-------	------	------	------	------	------	---------------	----------------

01 2024-01	Priority BROWARD MPO UPWP - FM# 4393245-6-7	Type of Work: TRANSPORTATION PLANNING					Proposed Study: N/A	Funding Source: FEDERAL		
								Yes	Yes	Yes

Program Direction: Program balance of \$3m float not currently programmed in FY'26. Allocate \$9.5M SU funding to FY 2030. Oakland Park (NE 34th Court) project (\$689k) removal could support the float.

LAP: N/A Lead Agency: BROWARD MPO
 MTP Page # 1-2 MTP Timeframe: N/A

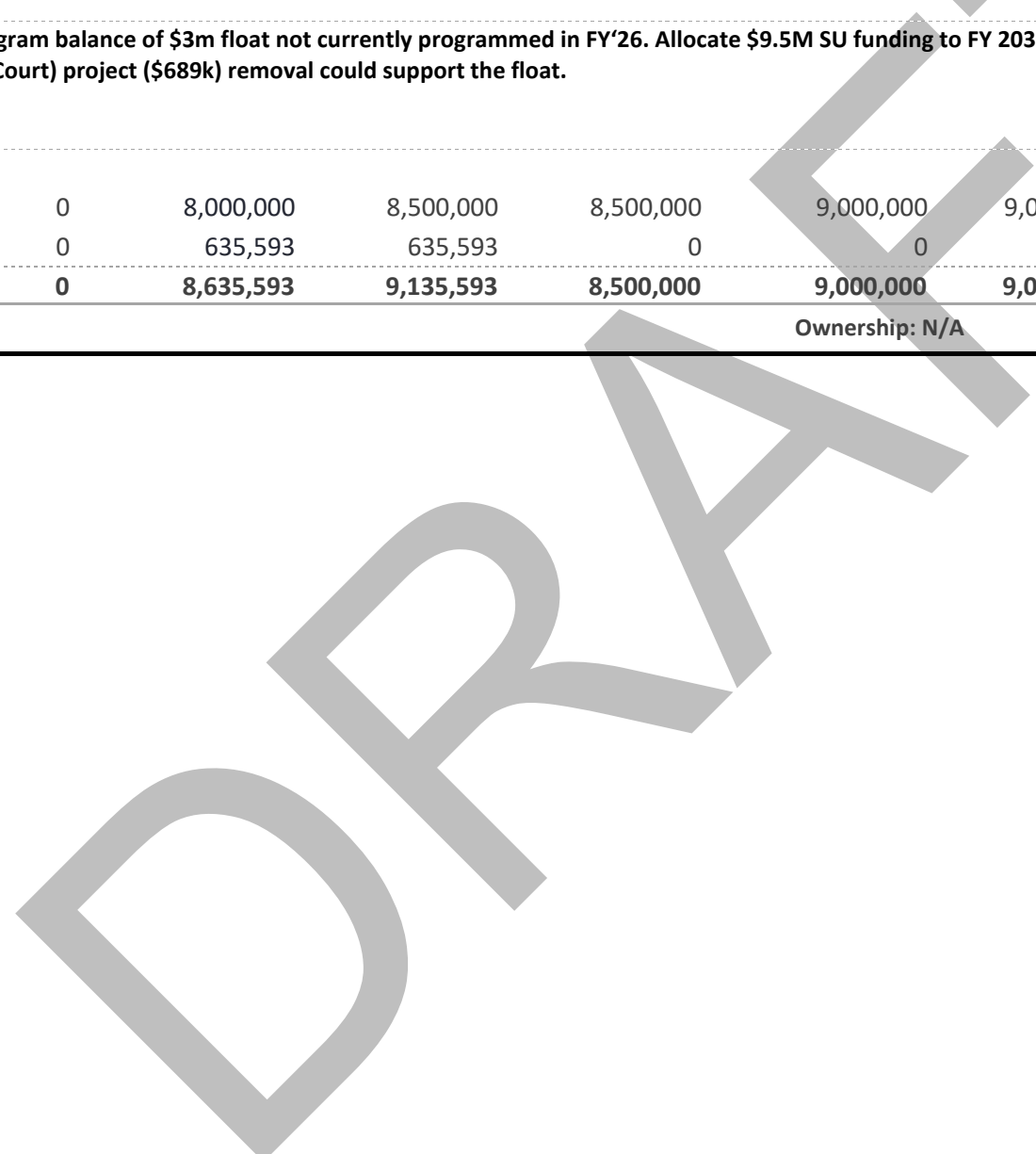
2024 MPO PRIORITY #1

PLN	0	8,000,000	8,500,000	8,500,000	9,000,000	9,000,000	43,000,000	9,500,000
FLOAT	0	635,593	635,593	0	0	0	1,271,186	1,728,814
Total	0	8,635,593	9,135,593	8,500,000	9,000,000	9,000,000	44,271,186	11,228,814

City: BROWARD MPO

Ownership: N/A

Annual Project



CSLIP

COMPLETE STREETS AND OTHER LOCALIZED INITIATIVES PROGRAM

PROGRAM



CSLIP

CSLIP MPO Adopted Program Funding Goal 20%

Phase	<2025	2025	2026	2027	2028	2029	Amount Funded	Funding Needed	
01	CITY OF LAUDERHILL VARIOUS LOCATIONS - FM# 4507831						Funding Source: Federal		
2024-06	Type of Work: BIKE LANE/SIDEWALK				Proposed Study: N/A		Yes	Yes	Yes Yes
Program Direction:									
2023 MPO CSLIP PRIORITY #7 CYCLE 6 LAP W/CITY OF LAUDERHILL NW 49TH AVE. FROM NW 12TH STREET TO NW 23RD STREET, NW 43RD TERRACE FROM NW 12TH STREET TO NW 16TH STREET, NW 12TH STREET FROM NW 50TH AVENUE TO SR 7.									
PE	0	0	0	0	150,190	0	150,190	0	
CST	0	0	0	0	0	0	0	1,171,758	
Total	0	0	0	0	150,190	0	150,190	1,171,758	

City: Lauderhill Ownership: Local Total Project Cost Estimate: 1,321,948

02	TYLER ST FROM NW 21 AVE TO N YOUNG CIRCLE - FM# 4507901						Funding Source: Federal, State, and Local		
2024-07	Type of Work: BIKE LANE/SIDEWALK				Proposed Study: Feasibility		Yes	Yes	Yes Yes
Program Direction:									
2023 MPO CSLIP PRIORITY #8 CYCLE 6 LAP W/CITY OF HOLLYWOOD									
PE	0	0	0	0	299,052	0	299,052	0	
CST-Local	0	0	0	0	0	0	0	764,819	
CST	0	0	0	0	0	0	0	3,799,223	
Total	0	0	0	0	299,052	0	299,052	4,564,042	

City: Hollywood Ownership: Local/State Total Project Cost Estimate: 4,863,094

Phase	<2025	2025	2026	2027	2028	2029	Amount Funded	Funding Needed
-------	-------	------	------	------	------	------	---------------	----------------

03 2024-08	Priority NW 41 STREET FROM SR-7/US-441 TO NW 31 AVE - FM# 4533381	Type of Work: BIKE LANE/SIDEWALK	Proposed Study: N/A	Funding Source: Federal and Local
	Yes	Yes	Yes	Yes

Program Direction: LAP: Yes Lead Agency: Lauderdale Lakes
 MTP Page # 5-30 MTP Timeframe: N/A

2023 MMPL CSLIP Priority #4. Cycle 7. Installation of a multi-use path on both sides of NW 41st St from SR-7 and NW 31st Ave in addition to two new community shuttle stops

PE	0	0	0	0	0	234,620	234,620	0
PE-CST-LF	0	0	0	0	0	0	0	187,215
CST	0	0	0	0	0	0	0	1,344,757
Total	0	0	0	0	0	234,620	234,620	1,531,972

City: LAUDERDALE LAKES Ownership: Local Total Project Cost Estimate: 1,766,592

04 2024-09	Priority CITY OF HOLLYWOOD SIDEWALK AT VARIOUS LOCATIONS - FM# 4533391	Type of Work: BIKE PATH/TRAIL	Proposed Study: N/A	Funding Source: Federal and Local
	Yes	Yes	Yes	Yes

Program Direction: LAP: Yes Lead Agency: Hollywood
 MTP Page # 5-30 MTP Timeframe: N/A

2023 MMPL CSLIP Priority #8. Cycle 7. Area between I-95 to the west, Dixie Hwy to the east, Pembroke Rd to the south and Johnson St to the north. Please refer to the project location map in the provided back up documentation for this project.

PE	0	0	0	0	0	452,982	452,982	0
PE-CST-LF	0	0	0	0	0	0	0	298,655
CST	0	0	0	0	0	0	0	3,529,128
Total	0	0	0	0	0	452,982	452,982	3,827,783

City: HOLLYWOOD Ownership: Local Total Project Cost Estimate: 4,280,765

Phase	<2025	2025	2026	2027	2028	2029	Amount Funded	Funding Needed
-------	-------	------	------	------	------	------	---------------	----------------

05 2024-New	Priority South Florida Rail Corridor at multiple locations - FM#	Type of Work: SAFETY PROJECT	Proposed Study: N/A	Funding Source: Federal				
				Yes	Yes	Yes	Yes	

Program Direction: Funds to be Flexed to SFRTA.

LAP: No
MTP Page # 5-30

Lead Agency: SFRTA
MTP Timeframe: N/A

Cycle 8. Installation of high-security fencing and signage at locations along the South Florida Rail Corridor at the following locations: 1) Dania Cut Off Canal to Tigertail Blvd. (9,200 ft. total), 2) 700 feet south of the Fort Lauderdale Tri-Rail Station to 560 feet north of Sistrunk Blvd. (11,000 ft. total), and 3) 840 feet south of Prospect Rd. to 900 feet north of W Commercial Blvd (7,400 ft. total).

PE	0	0	0	0	0	0	0	240,347
CST	0	0	0	0	0	0	0	2,734,243
Total	0	0	0	0	0	0	0	2,974,590

City: DANIA BEACH/FORT LAUDERDALE/OAKLAND PARK Ownership: State Total Project Cost Estimate: 2,974,590

06 2024-New	Priority NE 15th Avenue from Sunrise Blvd. to the Middle River - FM#	Type of Work: PEDESTRIAN SAFETY IMPROVEMENT	Proposed Study: N/A	Funding Source: Federal and Local				
				Yes	Yes	Yes	Yes	

Program Direction:

LAP: Yes Lead Agency: Fort Lauderdale
MTP Page # 5-30 MTP Timeframe: N/A

Cycle 8. Enhanced bike lanes, new and enhanced crosswalks, extended landscaped medians, and raised intersections

PE-CST-LF	0	0	0	0	0	0	0	287,892
PE	0	0	0	0	0	0	0	500,804
CST	0	0	0	0	0	0	0	2,931,246
Total	0	0	0	0	0	0	0	3,719,942

City: Fort Lauderdale Ownership: Local Total Project Cost Estimate: 3,719,942

Phase	<2025	2025	2026	2027	2028	2029	Amount Funded	Funding Needed
-------	-------	------	------	------	------	------	---------------	----------------

07 Priority Atlantic Shores Boulevard from US-1 to Diplomat Parkway - FM#
 2024-New Type of Work: PEDESTRIAN SAFETY IMPROVEMENT Proposed Study: N/A **Funding Source: Federal and Local**
 🔍 Yes 📄 Yes 🗺️ Yes 👥 No

Program Direction: City covers design cost
 LAP: Yes Lead Agency: Hallandale Beach
 MTP Page # 5-30 MTP Timeframe: N/A

Cycle 8. Widened sidewalks, raised pedestrian crossings, roundabout, improved on-street parking, and pedestrian lighting. No funds requested for design phase. City covers design cost.

PE-CST-LF	0	0	0	0	0	0	0	15,374,609
PE	0	0	0	0	0	0	0	5,000
CST	0	0	0	0	0	0	0	2,994,515
Total	0	0	0	0	0	0	0	18,374,124

City: Hallandale Beach Ownership: Local **Total Project Cost Estimate: 18,374,124**

08 Priority Miramar Boulevard at multiple locations - FM#
 2024-New Type of Work: SIDEWALK Proposed Study: N/A **Funding Source: Federal and Local**
 🔍 Yes 📄 Yes 🗺️ Yes 👥 Yes

Program Direction:
 LAP: Yes Lead Agency: Miramar
 MTP Page # 5-30 MTP Timeframe: N/A

Cycle 8. Shared use path on the north side of Miramar Blvd. from University Dr. to Douglas Road and on the west side of Stacey Ln. between Sherman Cir. And Miramar Blvd. Installation of sharrows on Miramar Blvd. from Douglas Rd. to Palm Ave.

PE-CST-LF	0	0	0	0	0	0	0	536,918
PE	0	0	0	0	0	0	0	600,987
CST	0	0	0	0	0	0	0	3,556,031
Total	0	0	0	0	0	0	0	4,693,936

City: Miramar Ownership: Local **Total Project Cost Estimate: 4,693,936**

PROGRAM THRESHOLD

Phase	<2025	2025	2026	2027	2028	2029	Amount Funded	Funding Needed
-------	-------	------	------	------	------	------	---------------	----------------

09 2024-New	Priority	West Park Road from N Park Rd. to N 56 Ave. - FM#					Funding Source: Federal and Local		
		Type of Work: BIKE LANE/SIDEWALK					Proposed Study: N/A		
Program Direction:							LAP: Yes	Lead Agency: Hollywood	
Cycle 8. Elimination of one eastbound/westbound lane, various intersection modifications, separated bicycle lanes and improved pedestrian facilities including crosswalks, ADA upgrades, and landscaping							MTP Page # 5-30	MTP Timeframe: N/A	
PE-CST-LF	0	0	0	0	0	0	0	239,836	
PE	0	0	0	0	0	0	0	364,755	
CST	0	0	0	0	0	0	0	2,835,070	
Total	0	0	0	0	0	0	0	3,439,661	

City: Hollywood Ownership: Local Total Project Cost Estimate: 3,439,661

10 2024-New	Priority	NE 3rd Avenue NE 38 St. to NE 48 St. - FM#					Funding Source: Federal and Local		
		Type of Work: SAFETY PROJECT					Proposed Study: N/A		
Program Direction:							LAP: Yes	Lead Agency: Deerfield Beach	
Cycle 8. Convert a four-lane roadway to three-lanes, buffered bicycle lanes, replace a four-way stop with a roundabout, signalized intersection improvements, improved roadway lighting, and mid block crosswalk with HAWK pedestrian signal.							MTP Page # 5-30	MTP Timeframe: N/A	
PE-CST-LF	0	0	0	0	0	0	0	2,222,574	
PE	0	0	0	0	0	0	0	894,030	
CST	0	0	0	0	0	0	0	3,850,053	
Total	0	0	0	0	0	0	0	6,966,657	

City: Deerfield Beach Ownership: Local Total Project Cost Estimate: 6,966,657

Phase	<2025	2025	2026	2027	2028	2029	Amount Funded	Funding Needed
-------	-------	------	------	------	------	------	---------------	----------------

11 2024-New	Priority	NE 10th Street Roadway from NE 5th Ave. to US-2 - FM#					Funding Source: Federal and Local		
		Type of Work: MEDIAN MODIFICATION					Yes Yes Yes Yes Proposed Study: N/A LAP: Yes Lead Agency: Pompano Beach MTP Page # 5-30 MTP Timeframe: N/A		
Program Direction:									
Cycle 8. Convert eight pavement marking islands to curbed landscape median islands									
PE-CST-LF	0	0	0	0	0	0	0	295,000	
PE	0	0	0	0	0	0	0	544,319	
CST	0	0	0	0	0	0	0	3,540,535	
Total	0	0	0	0	0	0	0	4,379,854	

City: Pompano Beach Ownership: Local Total Project Cost Estimate: 4,379,854

12 2024-New	Priority	NW 41st Street from SR-7 to NW 52 Ave - FM#					Funding Source: Federal and Local		
		Type of Work: BIKE LANE/SIDEWALK					Yes Yes Yes Yes Proposed Study: N/A LAP: Yes Lead Agency: Lauderdale Lakes MTP Page # 5-30 MTP Timeframe: N/A		
Program Direction:									
Cycle 8. Shared use path on either side of NW 41st St from SR-7 to NW 52 Ave. Create four new community shuttle stops.									
PE-CST-LF	0	0	0	0	0	0	0	356,663	
PE	0	0	0	0	0	0	0	398,495	
CST	0	0	0	0	0	0	0	2,585,329	
Total	0	0	0	0	0	0	0	3,340,487	

City: Lauderdale Lakes Ownership: Local Total Project Cost Estimate: 3,340,487

Phase	<2025	2025	2026	2027	2028	2029	Amount Funded	Funding Needed
-------	-------	------	------	------	------	------	---------------	----------------

13 2024-New	Priority	NE 12th Avenue from E Oakland Park Blvd. to NE 36 St. - FM#					Funding Source: Federal and Local		
		Type of Work: PEDESTRIAN SAFETY IMPROVEMENT					Proposed Study: N/A		
Program Direction:							LAP: Yes	Lead Agency: Oakland Park	
Cycle 8. Installation of a shared use path, modifications of existing on-street parking, conversion from a one-way to a two-way between NE 34 St. and NE 35 St., landscaping improvements, and roadway reconstruction south of NE 34 St. and north of NE 35 St							MTP Page # 5-30	MTP Timeframe: N/A	
PE-CST-LF	0	0	0	0	0	0	0	150,007	
PE	0	0	0	0	0	0	0	203,010	
CST	0	0	0	0	0	0	0	1,553,074	
Total	0	0	0	0	0	0	0	1,906,091	

City: Oakland Park Ownership: Local Total Project Cost Estimate: 1,906,091

14 2024-New	Priority	Cleary Boulevard from Nob Hill Rd. to Hiatus Rd. - FM#					Funding Source: Federal		
		Type of Work: PEDESTRIAN SAFETY IMPROVEMENT					Proposed Study: N/A		
Program Direction:							LAP: Yes	Lead Agency: Plantation	
Cycle 8. Sidewalk and safety improvements from Nob Hill Rd. to Hiatus Rd. including high visibility mid-block crosswalks, shared use path on the south side of Cleary Blvd.,and landscape and drainage modification.							MTP Page # 5-30	MTP Timeframe: N/A	
PE	0	0	0	0	0	0	0	187,000	
CST	0	0	0	0	0	0	0	1,124,300	
Total	0	0	0	0	0	0	0	1,311,300	

City: Plantation Ownership: Local Total Project Cost Estimate: 1,311,300

Phase	<2025	2025	2026	2027	2028	2029	Amount Funded	Funding Needed
15 2024-New Priority	NW 94th Avenue, NW 42nd Street, NW 50th Street - FM# Type of Work: BIKE LANE/SIDEWALK Proposed Study: N/A						Funding Source: Federal and Local Yes Yes Yes Yes LAP: Yes MTP Page # 5-30 Lead Agency: Sunrise MTP Timeframe: N/A	
	Program Direction: Cycle 8. Dedicated bicycle lanes on NW 94th Avenue (from NW 42nd Street to NW 44th Street & from W Oakland Park Boulevard to NW 42nd Street), NW 42nd Street (from N Nob Hill Road to NW 94th Avenue) and NW 50th Street (from NW 94th Avenue to N Pine Island Road). Installation of a roundabout at the intersection of NW 94th Ave and NW 42nd Street.							
PE-CST-LF	0	0	0	0	0	0	0	3,635,450
PE	0	0	0	0	0	0	0	599,000
CST	0	0	0	0	0	0	0	2,400,301
Total	0	0	0	0	0	0	0	6,634,751
City: Sunrise					Ownership: Local		Total Project Cost Estimate: 6,634,751	
16 2024-New Priority	NE 21st Avenue from Sample Rd. south to NE 30 St. and NE 29 St. from US-1 east to NE 21 Ave. - FM# Type of Work: SIDEWALK Proposed Study: N/A						Funding Source: Federal and Local Yes Yes Yes Yes LAP: Yes MTP Page # 5-30 Lead Agency: Lighthouse Point MTP Timeframe: N/A	
	Program Direction: Cycle 8. Improvements include widened sidewalks, ADA improvements, sharrows, stormwater and drainage reconfiguration, and milling and resurfacing.							
PE-CST-LF	0	0	0	0	0	0	0	85,863
PE	0	0	0	0	0	0	0	176,725
CST	0	0	0	0	0	0	0	766,316
Total	0	0	0	0	0	0	0	1,028,904
City: Lighthouse Point					Ownership: Local		Total Project Cost Estimate: 1,028,904	

Phase	<2025	2025	2026	2027	2028	2029	Amount Funded	Funding Needed	
17 Priority 2024-New	Royal Palm Boulevard from Sportsplex Drive to Coral Ridge Drive - FM#						Funding Source: Federal and Local		
	Type of Work: BIKE LANE/SIDEWALK						Proposed Study: N/A		
Program Direction:							Yes Yes Yes Yes LAP: Yes Lead Agency: Coral Springs MTP Page # 5-30 MTP Timeframe: N/A		
Cycle 8. Shared use path, transit amenities, lane width reduction, tree removal and drainage, curb and gutter improvements									
PE-CST-LF	0	0	0	0	0	0	0	530,775	
PE	0	0	0	0	0	0	0	368,525	
CST	0	0	0	0	0	0	0	2,868,075	
Total	0	0	0	0	0	0	0	3,767,375	
City: Coral Springs					Ownership: Local		Total Project Cost Estimate: 3,767,375		
18 Priority 2024-New	Blatt Blvd, Racquet Club Rd, Lakeview Dr, E. Mall Rd, and W. Mall Rd. - FM#						Funding Source: Federal and Local		
	Type of Work: BIKE LANE/SIDEWALK						Proposed Study: N/A		
Program Direction:							Yes Yes Yes Yes LAP: Yes Lead Agency: Weston MTP Page # 5-30 MTP Timeframe: N/A		
Cycle 8. Blatt Blvd (from Bonaventure Blvd. to Lakeview Drive), Racquet Club Rd from Saddle Club Road to Natur's Way), Lakeview Dr. (from W Mall Rd. to Saddle Club Rd.), E. Mall Rd (from S.R. 84 to Racquet Club Rd.), and W. Mall Rd. from S.R. 84 to Racquet Club Rd.)									
PE-CST-LF	0	0	0	0	0	0	0	1,548,878	
PE	0	0	0	0	0	0	0	454,896	
CST	0	0	0	0	0	0	0	3,566,917	
Total	0	0	0	0	0	0	0	5,570,691	
City: Weston					Ownership: Local		Total Project Cost Estimate: 5,570,691		

Phase	<2025	2025	2026	2027	2028	2029	Amount Funded	Funding Needed
-------	-------	------	------	------	------	------	---------------	----------------

19 2024-New	Priority Various locations in the South Middle River Neighborhood - FM#	Type of Work: SAFETY PROJECT	Proposed Study: N/A	Funding Source: Federal and Local			
	Yes Yes Yes Yes						

Program Direction: LAP: Yes Lead Agency: Fort Lauderdale
 MTP Page # 5-30 MTP Timeframe: N/A

Cycle 8. Addition of sidewalks and traffic calming through raised intersections and intersection realignments at various locations east of NW 9 St., north of Sunrise Blvd., west of NE 4th Avenue and south of the river.

PE-CST-LF	0	0	0	0	0	0	0	235,136
PE	0	0	0	0	0	0	0	449,478
CST	0	0	0	0	0	0	0	2,627,744
Total	0	0	0	0	0	0	0	3,312,358

City: Fort Lauderdale Ownership: Local Total Project Cost Estimate: 3,312,358

20 2024-New	Priority Cypress Road, Plantation Road, East Tropical Way and SW 125 Avenue - FM#	Type of Work: SIDEWALK	Proposed Study: N/A	Funding Source: Federal			
	Yes Yes Yes Yes						

Program Direction: LAP: Yes Lead Agency: Plantation
 MTP Page # 5-30 MTP Timeframe: N/A

Cycle 8. Construct sidewalks along Cypress Rd. from OPWCD Holloway Canal east to N. Fig Tree Lane., Plantation Rd. from NW 68th Avenue to NW 70th Avenue, East Tropical Way from W. Broward Blvd to Peters Road and SW 125 Avenue from the neighborhood pocket park south to the SR84/Broward County Greenway

PE	0	0	0	0	0	0	0	183,400
CST	0	0	0	0	0	0	0	1,102,160
Total	0	0	0	0	0	0	0	1,285,560

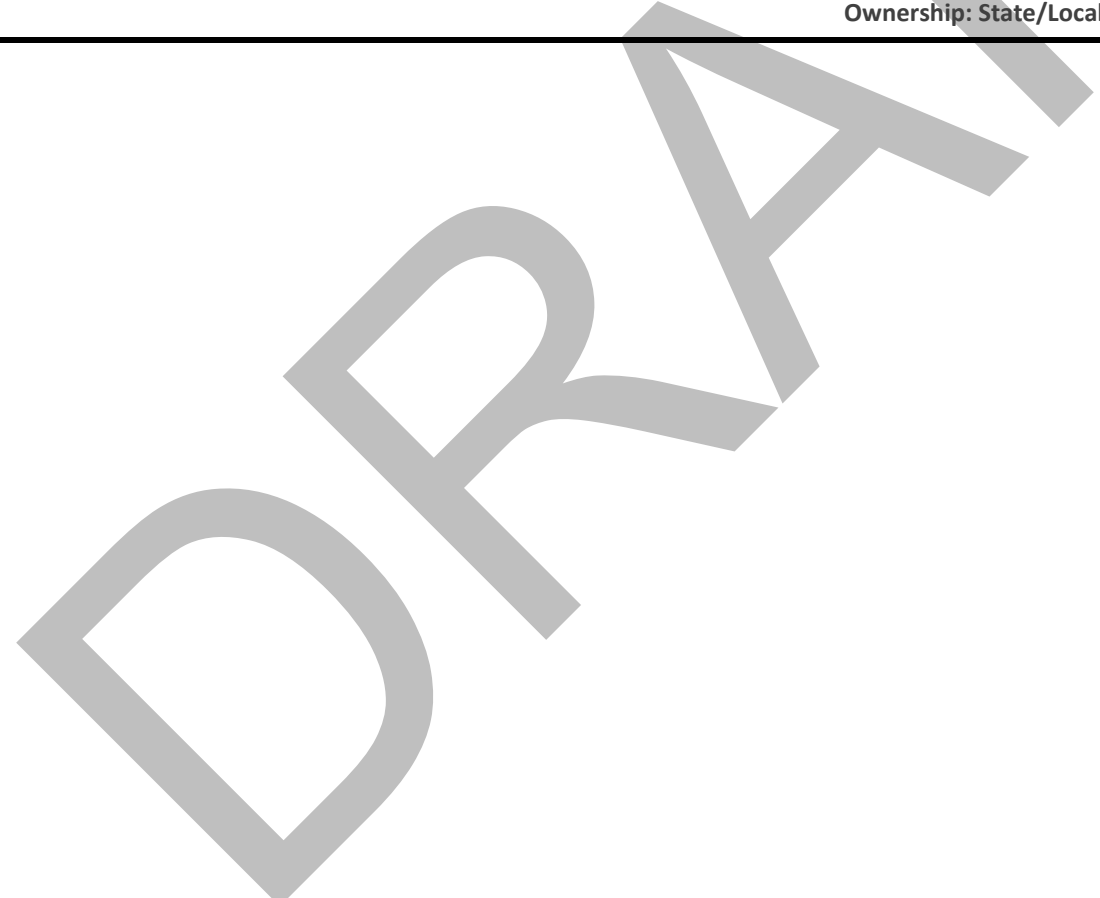
City: Plantation Ownership: Local Total Project Cost Estimate: 1,285,560

Phase	<2025	2025	2026	2027	2028	2029	Amount Funded	Funding Needed
-------	-------	------	------	------	------	------	---------------	----------------

21 2024-New	Priority	Josh Lee Boulevard from West Oakland Park Boulevard to North Nob Hill Road - FM#					Funding Source: Federal and Local		
		Type of Work: ROAD RECONSTRUCTION - 2 LANE					Proposed Study: N/A		
Program Direction:							Yes Yes Yes Yes		
Program Direction:							LAP: Yes	Lead Agency: Sunrise	
Program Direction:							MTP Page # 5-30	MTP Timeframe: N/A	
<p>Cycle 8. Remove two west bound lanes on the north side of the roadway, modification of the two east bound lanes on the south side to accept both directions of travel, convert median into on-street parking. Installation of multi-use path on the north side. Replacement of sidewalk on the south side. Relocation of bus stops and new bus shelters, installation of pedestrian and street lighting, and ADA upgrades.</p>									
PE-CST-LF	0	0	0	0	0	0	0	2,034,441	
PE	0	0	0	0	0	0	0	903,412	
CST	0	0	0	0	0	0	0	3,564,852	
Total	0	0	0	0	0	0	0	6,502,705	
City: Sunrise					Ownership: Local		Total Project Cost Estimate: 6,502,705		

22 2024-New	Priority	Polk Street from N 26 Avenue and N Dixie Highway - FM#					Funding Source: Federal and Local		
		Type of Work: BIKE LANE/SIDEWALK					Proposed Study: N/A		
Program Direction:							Yes Yes Yes Yes		
Program Direction:							LAP: Yes	Lead Agency: Hollywood	
Program Direction:							MTP Page # 5-30	MTP Timeframe: N/A	
<p>Cycle 8. Eliminate one lane, create a bi-directional buffered bicycle lane, upgrade sidewalk, install crosswalks, ADA upgrades, and landscaping.</p>									
PE-CST-LF	0	0	0	0	0	0	0	218,415	
PE	0	0	0	0	0	0	0	332,623	
CST	0	0	0	0	0	0	0	2,582,299	
Total	0	0	0	0	0	0	0	3,133,337	
City: Hollywood					Ownership: Local		Total Project Cost Estimate: 3,133,337		

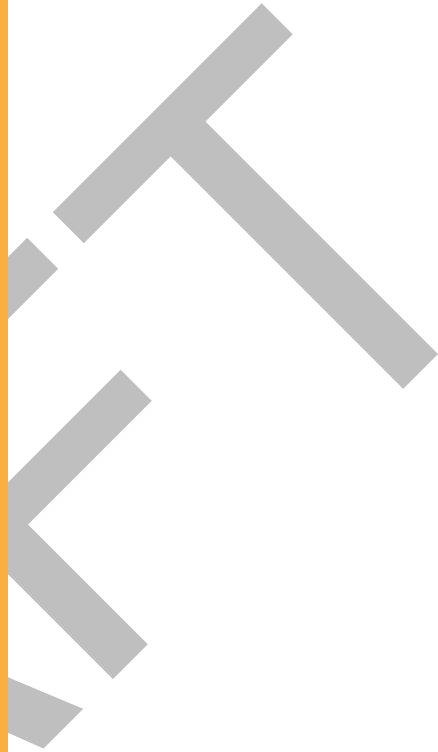
Phase	<2025	2025	2026	2027	2028	2029	Amount Funded	Funding Needed		
23 2024-New	Bass Creek Road from Lakeside Drive to Dykes Road - FM#						Funding Source: Federal and Local			
Priority	Type of Work: SIDEWALK						Proposed Study: N/A			
Program Direction:							LAP: Yes		Lead Agency: Miramar	
Cycle 8. Construct a roundabout at Bass Creek Rd. and Lakeside Dr. as well as a sidewalk on the south side of Bass Creek Rd. between Lakeside Dr. and Dykes Rd. Portion of right-of-way over I-75 belongs to FDOT.							MTP Page # 5-30		MTP Timeframe: N/A	
PE-CST-LF	0	0	0	0	0	0	0	1,437,623		
PE	0	0	0	0	0	0	0	604,916		
CST	0	0	0	0	0	0	0	3,597,876		
Total	0	0	0	0	0	0	0	5,640,415		
City: Miramar					Ownership: State/Local		Total Project Cost Estimate:		5,640,415	



CSMP

COMPLETE STREETS MASTER PLAN

PROGRAM



Phase	<2025	2025	2026	2027	2028	2029	Amount Funded	Funding Needed	
01-A Priority	SR-817/UNIVERSITY DR FR N. OF SR-824/PEMBROKE RD TO N. OF JOHNSON ST - FM# 4435971						Funding Source: State		
2024-01-A	Type of Work: BIKE LANE/SIDEWALK			Proposed Study: N/A			Yes Yes Yes Yes		
Program Direction:							LAP: No	Lead Agency: FDOT	
2020 MPO CSMP PRIORITY #1 CITY OF PEMBROKE PINES BIKE LANE AND SIDEWALK PROJECT. SR-817/UNIVERSITY DRIVE; AT PEMBROKE ROAD & PINES BLVD SAFETY LIGHTING PROJECTS							MTP Page # 5-3	MTP Timeframe: N/A	
CST	0	24,238,083	1,166,000	0	0	0	25,404,083	0	
Total	0	24,238,083	1,166,000	0	0	0	25,404,083	0	
City: PEMBROKE PINES					Ownership: State		Total Project Cost Estimate: 25,404,083		
01-B Priority	SR-817/UNIVERSITY DRIVE FR S. OF SR-848/STIRLING RD TO N. OF SW 36 ST - FM# 4435972						Funding Source: STATE		
2024-01-B	Type of Work: BIKE LANES/SIDEWALK			Proposed Study: N/A			Yes Yes Yes Yes		
Program Direction:							LAP: No	Lead Agency: FDOT	
2021 MPO CSMP PRIORITY #1 TOWN OF DAVIE BASED ON FEASIBILITY STUDY DONE UNDER 432066-3							MTP Page # 5-3	MTP Timeframe: N/A	
PE	0	0	0	0	0	0	0	1,200,172	
CST	0	0	0	0	0	0	0	13,486,471	
Total	0	0	0	0	0	0	0	14,686,643	
City: Davie					Ownership: State		Total Project Cost Estimate: 14,686,643		
01-C Priority	SR-817/UNIVERSITY DRIVE FR N. OF SOUTHGATE BLVD TO N. OF RAMBLEWOOD DR - FM# 4435973						Funding Source: State		
2024-01-C	Type of Work: BIKE LANE/SIDEWALK			Proposed Study: N/A			Yes Yes Yes Yes		
Program Direction:							LAP: No	Lead Agency: FDOT	
2020 MPO CSMP PRIORITY #2 CITY OF CORAL SPRINGS BASED ON FEASIBILITY STUDY DONE UNDER 432066-3 SR 817/UNIVERSITY DRIVE; AT SOUTHGATE BLVD SAFETY LIGHTING PROJECT NPV= \$20,991,198; B/C=17.1; SHSP=2 INTERSECTION CRASHES							MTP Page # 5-3	MTP Timeframe: N/A	
CST	0	0	0	0	0	0	0	8,469,890	
Total	0	0	0	0	0	0	0	8,469,890	
City: CORAL SPRINGS					Ownership: State		Total Project Cost Estimate: 8,469,890		

Phase	<2025	2025	2026	2027	2028	2029	Amount Funded	Funding Needed	
01-D Priority 2024-01-D	SR-817/UNIVERSITY DR. FROM N. OF JOHNSON STREET TO S. OF STIRLING RD - FM# 4435974						Funding Source: State		
	Type of Work: BIKE LANE/SIDEWALK						Proposed Study: N/A		
Program Direction:							LAP: No	Lead Agency: FDOT	
BASED ON FEASIBILITY STUDY DONE UNDER 432066-3 SR-817/UNIVERSITY DRIVE 2021 MPO CSMP PRIORITY #5							MTP Page # 5-3	MTP Timeframe: N/A	
CST	0	0	0	0	0	0	0	19,607,155	
Total	0	0	0	0	0	0	0	19,607,155	
City: PEMBROKE PINES						Ownership: State	Total Project Cost Estimate:	19,607,155	
02 Priority 2024-02	SR-834/SAMPLE RD. FROM BLOUNT RD TO NE 3RD AVE. - FM# 4514061						Funding Source: State		
	Type of Work: BIKE LANE/SIDEWALK						Proposed Study: N/A		
Program Direction:							LAP: No	Lead Agency: FDOT	
2023 BMPO CSMP PRIORITY #2. FROM FEASIBILITY STUDY 446377-1. BUFFERED BICYCLE LANES, WIDER PEDESTRIAN ZONE (SIDEWALKS), PEDESTRIAN LEVEL LIGHTING. FEASIBILITY STUDY IS INCLUDED IN THE PROJECT FM # 446377.1							MTP Page # 5-30	MTP Timeframe: N/A	
PE	0	0	0	0	755,000	0	755,000	0	
CST	0	0	0	0	0	0	0	8,209,152	
Total	0	0	0	0	755,000	0	755,000	8,209,152	
City: Deerfield Beach/Pompano Beach						Ownership: State	Total Project Cost Estimate:	8,964,152	
03 Priority 2024-03	NW 31 AVE FROM BROWARD BLVD TO MACNAB ROAD - FM# 4533411						Funding Source: Federal		
	Type of Work: BIKE LANE/SIDEWALK						Proposed Study: N/A		
Program Direction: County may advance fund design for this project. Advance PE phase if possible.							LAP: Yes	Lead Agency: County	
2023 MMPL CSMP Priority #3. SHARED USE PATH, TRAFFIC CALMING, LIGHTING, MIDBLOCK CROSSING							MTP Page # 5-30	MTP Timeframe: N/A	
PE	0	0	0	0	0	2,505,000	2,505,000	0	
CST	0	0	0	0	0	0	0	16,176,793	
Total	0	0	0	0	0	2,505,000	2,505,000	16,176,793	
City: Lauderdale Lakes/Lauderhill/ Tamarac/Fort Lauderdale/Pompano Beach/Oakland Park						Ownership: County	Total Project Cost Estimate:	18,681,793	

PROGRAM THRESHOLD

Phase	<2025	2025	2026	2027	2028	2029	Amount Funded	Funding Needed
-------	-------	------	------	------	------	------	---------------	----------------

04 2024-04 Priority SR-811/DIXIE HWY FROM SAMPLE RD. TO BROWARD/PALM BEACH CO. LINE - FM# 4514071 Type of Work: BIKE LANE/SIDEWALK Proposed Study: N/A	Funding Source: State Yes Yes Yes Yes LAP: No MTP Page # 5-30						Lead Agency: FDOT MTP Timeframe: N/A	
	Program Direction: FILL IN SIDEWALK GAPS, BUFFERED BICYCLE LANES, PEDESTRIAN LEVEL LIGHTING, STAMP CONCRETE INTERSECTIONS, TRANSIT SHELTERS, OPPORTUNITIES FOR LANDSCAPING, REFUGE ISLANDS, TRAFFIC CALMING, FEASIBILITY STUDY INCLUDED IN THE PROJECT FM# 4463771. ELEMENTS IDENTIFIED IN THE CSMP HAVE BEEN INCLUDED IN FM# 4481741 RESURFACING PROJECT (FY 2027 CONSTRUCTION). COSTS WILL NEED TO BE REVISED ONCE SCOPE ITEMS ARE CONFIRMED BY FDOT FOR THE RRR PROJECT.							
PE	0	0	0	0	0	0	0	2,658,169
CST	0	0	0	0	0	0	0	19,222,004
Total	0	0	0	0	0	0	0	21,880,173
City: Deerfield Beach/Pompano Beach						Ownership: State		Total Project Cost Estimate: 21,880,173

05 2024-05 Priority C-13 CANAL TRAIL FROM HIATUS GREENWAY TO EAST OF UNIVERSITY DR. - FM# 4508311 Type of Work: BIKE LANE/SIDEWALK Proposed Study: N/A	Funding Source: Federal Yes Yes Yes Yes LAP: Yes MTP Page # 5-30						Lead Agency: Sunrise MTP Timeframe: N/A	
	Program Direction: Reduce funding for PE phase to \$1,384,000. Move excess existing PE funding from FY 2027 to FM # 453341-1 (C S M P Priority #3, NW 31st Ave.) 2024 MMPL CSMP Priority #5. 10' Trail on north side of C-13 Canal, Mid block crossings, Pedestrian bridge. FDOT RECOMMENDS ADMINISTERING AS LAP.							
PE	0	0	0	2,392,863	0	0	2,392,863	(-1,008,863)
CST	0	0	0	0	0	0	0	10,100,000
Total	0	0	0	2,392,863	0	0	2,392,863	9,091,137
City: Sunrise						Ownership: County		Total Project Cost Estimate: 11,484,000

06 2024-06 Priority SHERIDAN ST FROM DOUGLAS RD TO UNIVERSITY DR - FM# Type of Work: Bike Lanes/Sidewalk Proposed Study: N/A	Funding Source: Federal Yes No Yes Yes LAP: Yes MTP Page # 5-30						Lead Agency: Cooper City MTP Timeframe: N/A	
	Program Direction: BUFFERED BICYCLE LANES, MULTIUSE PATH ON THE NORTH SIDE.FDOT recommends administering as LAP.							
PE	0	0	0	0	0	0	0	300,359
CST	0	0	0	0	0	0	0	3,082,292
Total	0	0	0	0	0	0	0	3,382,651
City: Cooper City						Ownership: Local		Total Project Cost Estimate: 3,382,651

State Funds	Federal Funds	Local Funds	Federal, State, and Local Funds
State and Local Funds	State and Federal Funds	Federal and Local Funds	

Phase	<2025	2025	2026	2027	2028	2029	Amount Funded	Funding Needed	
07 Priority 2024-07	MIRAMAR PKWY FROM SW 172 AVE TO DYKES RD - FM#						Funding Source: Federal		
	Type of Work: Bike Lanes/Sidewalk						Proposed Study: N/A		
Program Direction:							Yes Yes Yes Yes LAP: Yes Lead Agency: Miramar MTP Page # 5-30 MTP Timeframe: N/A		
SEPARATED BICYCLE LANES, FURNISHING ZONE, MID BLOCK CROSSWALKS, TRANSIT AMERNITY IMPROVEMENTS. FDOT RECOMMENDS ADMINISTERING AS LAP.									
PE	0	0	0	0	0	0	0	779,479	
CST	0	0	0	0	0	0	0	7,107,018	
Total	0	0	0	0	0	0	0	7,886,497	
City: Miramar					Ownership: Local		Total Project Cost Estimate: 7,886,497		
08 Priority 2024-08	OAKLAND PARK BLVD FROM UNIVERSITY DR TO ROCK ISLAND ROAD - FM#						Funding Source: State		
	Type of Work: Bike Lanes/Sidewalk						Proposed Study: N/A		
Program Direction:							Yes Yes Yes No LAP: No Lead Agency: FDOT MTP Page # 5-30 MTP Timeframe: N/A		
ENHANCED BUS CORRIDOR, BUFFERED BICYCLE LANES, WIDER PEDESTRIAN ZONE (SIDEWALKS), C-13 CANAL TRAIL. The project limits is included within the project limits for FM# 444673-1 SR-816/OAKLAND PARK BLVD from SR 817/University Drive to NW 31st Avenue: Oakland Park Blvd. Intermodal Development Study to Improve the Intermodal Access along the Corridor with Dedicated Bus Lanes and Improved Access to Local Transit Services.									
PE	0	0	0	0	0	0	0	840,000	
CST	0	0	0	0	0	0	0	6,700,000	
Total	0	0	0	0	0	0	0	7,540,000	
City: Lauderdale/Sunrise					Ownership: State		Total Project Cost Estimate: 7,540,000		
09 Priority 2024-09	PEMBROKE RD FROM FLAMINGO RD TO DOUGLAS RD - FM#						Funding Source: Federal		
	Type of Work: Bike Lanes/Sidewalk						Proposed Study: N/A		
Program Direction:							Yes Yes Yes Yes LAP: Yes Lead Agency: Pembroke Pines MTP Page # 5-30 MTP Timeframe: N/A		
BUFFERED BICYCLE LANES, WIDER PEDESTRIAN ZONE (SIDEWALKS), PEMBROKE PINES/HOLLYWOOD TRAIL									
PE	0	0	0	0	0	0	0	840,000	
CST	0	0	0	0	0	0	0	7,540,000	
Total	0	0	0	0	0	0	0	8,380,000	
City: Miramar/Pembroke Pines					Ownership: Local		Total Project Cost Estimate: 8,380,000		

Phase	<2025	2025	2026	2027	2028	2029	Amount Funded	Funding Needed
10 Priority 2024-10	SOUTHGATE BLVD FROM SW 81 AVE TO SR 7/US 441 - FM# Type of Work: Bike Lanes/Sidewalk Proposed Study: N/A						Funding Source: Federal Yes No Yes Yes LAP: Yes Lead Agency: TBD MTP Page # 5-30 MTP Timeframe: N/A	
	Program Direction: SEPARATED BICYCLE LANES, CONTINUOUS PEDESTRIAN ZONE (SIDEWALK GAPS), FURNISHING ZONE							
PE	0	0	0	0	0	0	0	1,169,092
CST	0	0	0	0	0	0	0	11,940,323
Total	0	0	0	0	0	0	0	13,109,415
City: Margate/North Lauderdale					Ownership: Local		Total Project Cost Estimate: 13,109,415	
11 Priority 2024-11	SE/NE 1 AVE / S/N 21 AVE/ DIXIE HWY FROM COUNTY LINE RD TO SHERIDAN ST - FM# Type of Work: Bike Lanes/Sidewalk Proposed Study: N/A						Funding Source: Federal Yes Yes Yes Yes LAP: Yes Lead Agency: County MTP Page # 5-30 MTP Timeframe: N/A	
	Program Direction: CONTINUOUS WIDER PEDESTRIAN ZONE (SIDEWALK GAPS), GREEN BUFFERED BICYCLE LANES, LANDSCAPING OPPORTUNITIES, PEDESTRIAN LEVEL LIGHTING, TRANSIT AMENITY IMPROVEMENTS, PEDESTRIAN IMPROVEMENTS. THE CITY OF HALLANDALE BEACH owns from County Line Road and Pembroke Road							
PE	0	0	0	0	0	0	0	4,196,491
CST	0	0	0	0	0	0	0	45,182,218
Total	0	0	0	0	0	0	0	49,378,709
City: Hallandale Beach/ Hollywood					Ownership: County,Local		Total Project Cost Estimate: 49,378,709	
12 Priority 2024-12	SW/SE 17 ST FROM US-1 TO CORDOVA - FM# Type of Work: Bike Lanes/Sidewalk Proposed Study: N/A						Funding Source: State Yes No Yes Yes LAP: Yes Lead Agency: FDOT MTP Page # 5-30 MTP Timeframe: N/A	
	Program Direction: 10' MULTIUSE PATH, SHARROWS, BIKE LANES, TRANSIT AMENITY IMPROVEMENTS, PEDESTRIAN LEVEL LIGHTING, CHICANES. Project is associated with FM# 4498251.							
PE	0	0	0	0	0	0	0	602,963
CST	0	0	0	0	0	0	0	4,585,691
Total	0	0	0	0	0	0	0	5,188,654
City: Fort Lauderdale					Ownership: State		Total Project Cost Estimate: 5,188,654	

Phase	<2025	2025	2026	2027	2028	2029	Amount Funded	Funding Needed	
13 Priority 2024-13	ROYAL PALM BLVD FROM CORAL SPRINGS DR TO RIVERSIDE DR - FM#						Funding Source: Federal		
	Type of Work: Bike Lanes/Sidewalk						Proposed Study: N/A		
Program Direction:							Yes Yes Yes Yes LAP: Yes Lead Agency: Coral Springs MTP Page # 5-30 MTP Timeframe: N/A		
BUFFERED BIKE LANES, 10' MULTIUSE PATH WITH PEDESTRIAN LIGHTING, TRANSIT AMENITIES, FURNISHING ZONE. Projects FM# 4495591 ROYAL PALM BLVD FROM UNIVERSITY DRIVE TO RIVERSIDE DRIVE, and FM# 4495621 SR-817/UNIVERSITY DR @ ROYAL PALM BLVD fall within project limits.									
PE	0	0	0	0	0	0	0	1,721,936	
CST	0	0	0	0	0	0	0	15,095,642	
Total	0	0	0	0	0	0	0	16,817,578	
City: Coral Springs					Ownership: Local		Total Project Cost Estimate: 16,817,578		
14 Priority 2024-14	NW 6 St from NW 31 Ave to NE 15 Ave - FM#						Funding Source: Federal		
	Type of Work: Bike Lanes/Sidewalk						Proposed Study: N/A		
Program Direction:							Yes No Yes Yes LAP: Yes Lead Agency: Fort Lauderdale MTP Page # 5-30 MTP Timeframe: N/A		
BUFFERED BIKE LANES WITH LANE WIDTH REDUCTION, SHARED USE/MULTIUSE PATH, TRANSIT AMENITIES, LIGHTING IMPROVEMENTS, ROUNDABOUTS, TRAFFIC CALMING									
PE	0	0	0	0	0	0	0	763,558	
CST	0	0	0	0	0	0	0	7,128,537	
Total	0	0	0	0	0	0	0	7,892,095	
City: Fort Lauderdale					Ownership: Local/County		Total Project Cost Estimate: 7,892,095		
15 Priority 2024-15	ROYAL PALM BLVD. FROM RIVERSIDE DR TO SR-7/US-441. - FM#						Funding Source: Federal		
	Type of Work: Bike Lanes/Sidewalk						Proposed Study: N/A		
Program Direction:							No No Yes Yes LAP: Yes Lead Agency: Margate MTP Page # 5-30 MTP Timeframe: N/A		
FILL IN SIDEWALK GAPS, BUFFERED BIKE LANES, CONTINUOUS FURNISHING ZONE									
PE	0	0	0	0	0	0	0	1,375,564	
CST	0	0	0	0	0	0	0	14,049,093	
Total	0	0	0	0	0	0	0	15,424,657	
City: Margate/Coral Springs					Ownership: Local		Total Project Cost Estimate: 15,424,657		

Phase	<2025	2025	2026	2027	2028	2029	Amount Funded	Funding Needed
16 Priority 2024-16	Miramar Pkwy. from Douglas Rd. to SR-7 - FM# Type of Work: Bike Lanes/Sidewalk Proposed Study: N/A						Funding Source: Federal Yes yes Yes Yes LAP: Yes Lead Agency: Broward County MTP Page # 5-30 MTP Timeframe: N/A	
Program Direction:								
8 FT. SIDEWALKS ON BOTH SIDES, TRANSIT AMENITY IMPROVEMENTS								
PE	0	0	0	0	0	0	0	439,987
CST	0	0	0	0	0	0	0	3,577,788
Total	0	0	0	0	0	0	0	4,017,775
City: Miramar						Ownership: Local/County	Total Project Cost Estimate: 4,017,775	
17 Priority 2024-17	Atlantic Blvd. from NW 31 Ave to NW 6th Ave - FM# Type of Work: Bike Lanes/Sidewalk Proposed Study: N/A						Funding Source: State Yes Yes Yes Yes LAP: No Lead Agency: FDOT MTP Page # 5-30 MTP Timeframe: N/A	
Program Direction:								
PEDESTRIAN LIGHTING, TRANSIT AMENITY IMPROVEMENTS, SIDEWALK WIDENING								
PE	0	0	0	0	0	0	0	692,987
CST	0	0	0	0	0	0	0	6,318,415
Total	0	0	0	0	0	0	0	7,011,402
City: Pompano Beach						Ownership: State	Total Project Cost Estimate: 7,011,402	
18 Priority 2024-18	SW 81st Ave. from NW 62nd St. / Bailey Rd. to Southgate Blvd. - FM# Type of Work: Bike Lanes/Sidewalk Proposed Study: N/A						Funding Source: Federal Yes No Yes Yes LAP: Yes Lead Agency: North Lauderdale MTP Page # 5-30 MTP Timeframe: N/A	
Program Direction:								
2 ROUNDABOUTS IN CORRIDOR FOR TRAFFIC CALMING, SHARROWS, SEPARATED BIKE LANES, SPEED REDUCTION, TRANSIT AMENITY IMPROVEMENTS								
PE	0	0	0	0	0	0	0	514,913
CST	0	0	0	0	0	0	0	4,187,052
Total	0	0	0	0	0	0	0	4,701,965
City: North Lauderdale						Ownership: Local	Total Project Cost Estimate: 4,701,965	

Phase	<2025	2025	2026	2027	2028	2029	Amount Funded	Funding Needed
19 Priority 2024-19	NE 3rd Ave. from Sample Rd. to Hillsboro Blvd. - FM# Type of Work: Bike Lanes/Sidewalk Proposed Study: N/A						Funding Source: Federal Yes Yes Yes Yes LAP: Yes Lead Agency: Deerfield Beach MTP Page # 5-30 MTP Timeframe: N/A	
Program Direction:								
LANE REDUCTION, PEDESTRIAN LIGHTNING, TRAFFIC CALMING, ROUNDABOUTS, SHARED USE PATH, TRANSIT AMENITYIMPROVEMENTS								
PE	0	0	0	0	0	0	0	1,008,552
CST	0	0	0	0	0	0	0	8,978,142
Total	0	0	0	0	0	0	0	9,986,694
City: Deerfield Beach/ Pompano Beach					Ownership: Local		Total Project Cost Estimate: 9,986,694	
20 Priority 2024-20	Coral Springs Drive from Ramblewood Dr. to Wiles Rd. - FM# Type of Work: Bike Lanes/Sidewalk Proposed Study: N/A						Funding Source: Federal Yes yes Yes Yes LAP: Yes Lead Agency: Broward County MTP Page # 5-30 MTP Timeframe: N/A	
Program Direction:								
TRANSIT AMENITY IMPROVEMENTS, PEDESTRIAN LIGHTING, SIDEWALK IMPROVEMENTS, BUFFERED BIKE LANES								
PE	0	0	0	0	0	0	0	1,056,942
CST	0	0	0	0	0	0	0	11,062,660
Total	0	0	0	0	0	0	0	12,119,602
City: Coral Springs					Ownership: County		Total Project Cost Estimate: 12,119,602	
21 Priority 2024-21	Nob Hill Road from Sunset Strip to NW 44 St - FM# Type of Work: Bike Lanes/Sidewalk Proposed Study: N/A						Funding Source: Federal No No Yes Yes LAP: Yes Lead Agency: Sunrise MTP Page # 5-30 MTP Timeframe: N/A	
Program Direction:								
GRADE SEPARATED BIKE LANE, CONTINUOUS FURNISHING ZONE, PEDESTRIAN LIGHTING, TRANSIT AMENITY IMPROVEMENTS								
PE	0	0	0	0	0	0	0	832,680
CST	0	0	0	0	0	0	0	8,504,439
Total	0	0	0	0	0	0	0	9,337,119
City: Sunrise					Ownership: Local		Total Project Cost Estimate: 9,337,119	

Phase	<2025	2025	2026	2027	2028	2029	Amount Funded	Funding Needed	
22 Priority 2024-22	NW 44th St. from SR-7 to NW 21st Ave. - FM# Type of Work: Bike Lanes/Sidewalk Proposed Study: N/A						Funding Source: Federal <input type="checkbox"/> No <input type="checkbox"/> No <input checked="" type="checkbox"/> Yes <input type="checkbox"/> No LAP: Yes Lead Agency: TBD MTP Page # 5-30 MTP Timeframe: N/A		
Program Direction:									
LANE REDUCTION, PEDESTRIAN LIGHTING, PROTECTED/ BUFFERED BIKE LANES, MID BLOCK CROSSINGS									
PE	0	0	0	0	0	0	0	787,604	
CST	0	0	0	0	0	0	0	8,191,085	
Total	0	0	0	0	0	0	0	8,978,689	
City: Lauderdale Lakes/ Oakland Park						Ownership: Local	Total Project Cost Estimate: 8,978,689		
23 Priority 2024-23	N 29 Ave from Sheridan St. to Sterling Rd. - FM# Type of Work: Bike Lanes/Sidewalk Proposed Study: N/A						Funding Source: Federal <input checked="" type="checkbox"/> Yes <input checked="" type="checkbox"/> Yes <input checked="" type="checkbox"/> Yes <input checked="" type="checkbox"/> Yes LAP: Yes Lead Agency: Hollywood MTP Page # 5-30 MTP Timeframe: N/A		
Program Direction:									
LANE ELIMINATION, PEDESTRIAN LIGHTING, WIDENING SIDEWALKS, PROTECTED/BUFFERED BIKE LANES, LANDSCAPE OPPORTUNITY AREAS (FURNISHING ZONE)									
PE	0	0	0	0	0	0	0	841,790	
CST	0	0	0	0	0	0	0	8,810,734	
Total	0	0	0	0	0	0	0	9,652,524	
City: Hollywood						Ownership: Local	Total Project Cost Estimate: 9,652,524		
24 Priority 2024-24	McNab Rd. from NW 31 AVE to Dixie Hwy - FM# Type of Work: Bike Lanes/Sidewalk Proposed Study: N/A						Funding Source: Federal <input type="checkbox"/> No <input type="checkbox"/> No <input checked="" type="checkbox"/> Yes <input type="checkbox"/> No LAP: Yes Lead Agency: TBD MTP Page # 5-30 MTP Timeframe: N/A		
Program Direction:									
LANE ELIMINATION, WIDEN MEDIANS, LANDSCAPING OPPORTUNITY AREAS, SEPARATED BICYCLE LANES, CONTINUOUS PEDESTRIAN ZONES, TRANSIT AMENITY IMPROVEMENTS, PEDESTRIAN LEVEL LIGHTING, MID BLOCK CROSSINGS									
PE	0	0	0	0	0	0	0	1,455,299	
CST	0	0	0	0	0	0	0	14,863,452	
Total	0	0	0	0	0	0	0	16,318,751	
City: Pompano Beach/ Fort Lauderdale						Ownership: County	Total Project Cost Estimate: 16,318,751		

Phase	<2025	2025	2026	2027	2028	2029	Amount Funded	Funding Needed		
25 Priority 2024-25	SW 172 Ave from Bass Creek Rd. to Pembroke Rd - FM#						Funding Source: Federal			
	Type of Work: Bike Lanes/Sidewalk						Proposed Study: N/A			
Program Direction:							LAP: Yes		Lead Agency: Miramar	
PEDESTRIAN LIGHTING, TRANSIT AMENITY IMPROVEMENTS SEPARATED/BUFFERED BIKE LANES, SHARED USE PATH							MTP Page # 5-30		MTP Timeframe: N/A	
PE	0	0	0	0	0	0	0	776,397		
CST	0	0	0	0	0	0	0	7,078,915		
Total	0	0	0	0	0	0	0	7,855,312		
City: Miramar					Ownership: Local		Total Project Cost Estimate:		7,855,312	



TRANSIT

PROGRAM



LEGEND:

 PRIORITIZED
TRANSIT PROJECTS

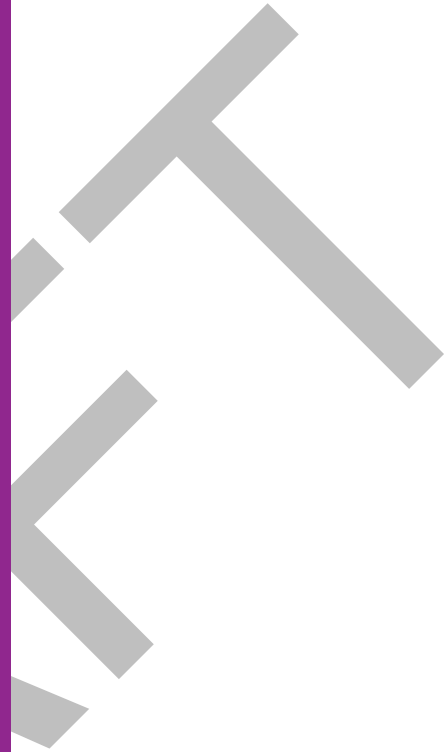


Phase	<2025	2025	2026	2027	2028	2029	Amount Funded	Funding Needed	
01	HOLLYWOOD/FORT LAUDERDALE MOBILITY HUB - VARIOUS LOCATIONS - FM# 4535691						Funding Source: STATE AND FEDERAL		
2024-01	Type of Work: BIKE LANE/SIDEWALK				Proposed Study: Planning		N/A N/A N/A N/A		
Program Direction: Project to be removed. Reprogram existing funds.							LAP: No Lead Agency: Broward MPO		
First/Last Mile connections to existing and future transit facilities							MTP Page # 5-30 MTP Timeframe: N/A		
CAP	0	0	2,000,000	2,000,000	2,000,000	0	6,000,000	5,484,000	
Total	0	0	2,000,000	2,000,000	2,000,000	0	6,000,000	5,484,000	
City: Fort Lauderdale, Hallandale Beach, Hollywood					Ownership: N/A		Total Project Cost Estimate: 11,484,000		



ROADWAY

PROGRAM



Phase	<2025	2025	2026	2027	2028	2029	Amount Funded	Funding Needed
-------	-------	------	------	------	------	------	---------------	----------------

01 2024-02	Priority	SR-5/US-1 @ SR-838/SUNRISE BOULEVARD - FM# 4419551					Funding Source: STATE		
		Type of Work: PD&E/EMO STUDY					Proposed Study: PD&E		
Program Direction:							LAP: NO	Lead Agency: FDOT	
2022 MPO ROADWAY PRIORITY #2 @ GATEWAY THEATER R/W NEEDED							MTP Page # 5-4	MTP Timeframe: 2021-2025	
PDE	2,010,000	0	0	0	0	0	2,010,000	0	
PE	0	2,026,112	0	0	0	0	2,026,112	0	
CST	0	0	0	0	0	0	0	19,439,122	
Total	2,010,000	2,026,112	0	0	0	0	4,036,112	19,439,122	

City: Fort Lauderdale Ownership: State Total Project Cost Estimate: 23,475,234

02 2024-03	Priority	SR-820/ PINES BLVD AT 196TH AVE - FM# 4449772					Funding Source: STATE		
		Type of Work: INTERSECTION IMPROVEMENT					Proposed Study: N/A		
Program Direction:							LAP: No	Lead Agency: FDOT	
2023 MPO Roadway Priority #3. Trip funding requested this cycle.							MTP Page # 5-4	MTP Timeframe: 2021-2025	
PE	0	0	820,000	0	0	0	820,000	0	
CST	0	0	0	0	0	0	0	8,481,698	
CST	0	0	0	0	0	3,564,030	3,564,030	8,481,698	
Total	0	0	820,000	0	0	3,564,030	4,384,030	8,481,698	

City: Pembroke Pines Ownership: State Total Project Cost Estimate: 12,865,728

Phase	<2025	2025	2026	2027	2028	2029	Amount Funded	Funding Needed	
03	SR-820/PINES BLVD. @ SR-823/FLAMINGO RD - FM# 4080462						Funding Source: STATE		
2024-04	Type of Work: PD&E/EMO STUDY			Proposed Study: PD&E			Yes Yes Yes Yes		
Program Direction:							LAP: No	Lead Agency: FDOT	
2023 MPO ROADWAY PRIORITY #4 IS R/W NEEDED							MTP Page # 5-4	MTP Timeframe: 2021-2025	
PDE	0	1,020,000	500,000	0	0	0	1,520,000	0	
PE	0	0	0	1,624,417	1,509,201	0	3,133,618	3,926,382	
ROW	0	0	0	0	0	0	0	45,000,000	
CST	0	0	0	0	0	0	0	45,000,000	
Total	0	1,020,000	500,000	1,624,417	1,509,201	0	4,653,618	93,926,382	
City: Pembroke Pines					Ownership: State		Total Project Cost Estimate: 98,580,000		
04	SR-845/POWERLINE RD FROM SW 10TH ST TO BROWARD/PALM BEACH COUNTY LINE - FM# 4463781						Funding Source: STATE		
2024-05	Type of Work: feasibility study			Proposed Study: feasibility study			Yes Yes Yes Yes		
Program Direction: To request feasibility for earlier year.							LAP: No	Lead Agency: FDOT	
2023 MPO ROADWAY PRIORITY# 5 WIDEN FROM 4 TO 6 LANES R/W IS NEEDED							MTP Page # 5-11	MTP Timeframe: 2025	
PDE	0	0	0	0	0	540,000	540,000	0	
PE	0	0	0	0	0	0	0	4,116,910	
ROW	0	0	0	0	0	0	0	11,710,602	
CST	0	0	0	0	0	0	0	11,710,602	
Total	0	0	0	0	0	540,000	540,000	27,538,114	
City: Deerfield Beach					Ownership: State		Total Project Cost Estimate: 28,078,114		

Phase	<2025	2025	2026	2027	2028	2029	Amount Funded	Funding Needed
-------	-------	------	------	------	------	------	---------------	----------------

05 Priority SR-7/US-441 @ SR-870/COMMERCIAL BLVD - FM# 4463801
 2024-06 Priority Type of Work: PD&E/EMO STUDY Proposed Study: PD&E

Funding Source: STATE
 Yes Yes Yes Yes
 LAP: NO Lead Agency: FDOT
 MTP Page # 5-17 MTP Timeframe: 2031-2035

Program Direction:
 2023 MPO ROADWAY PRIORITY# 6 IS R/W NEEDED

PDE	0	600,000	1,000,000	1,000,000	0	0	2,600,000	0
PE	0	0	0	0	0	0	0	32,560,000
ROW	0	0	0	0	0	0	0	148,000,000
CST	0	0	0	0	0	0	0	148,000,000
Total	0	600,000	1,000,000	1,000,000	0	0	2,600,000	328,560,000

City: Tamarac Ownership: State Total Project Cost Estimate: 331,160,000

06 Priority SW 130TH AVE FROM SW 8TH ST TO SR-84 - FM# 4463811
 2024-07 Priority Type of Work: FEASIBILITY STUDY Proposed Study: Feasibility

Funding Source: FEDERAL
 Yes Yes Yes Yes
 LAP: No Lead Agency: FDOT
 MTP Page # 5-16 MTP Timeframe: 2026-2030

Program Direction:
 2023 MPO ROADWAY PRIORITY# 7 IS R/W NEEDED

PDE	0	0	500,000	0	0	0	500,000	0
PE	0	0	0	0	760,000	0	760,000	0
CST	0	0	0	0	0	0	0	5,394,800
Total	0	0	500,000	0	760,000	0	1,260,000	5,394,800

City: Davie Ownership: Local Total Project Cost Estimate: 6,654,800

Phase	<2025	2025	2026	2027	2028	2029	Amount Funded	Funding Needed
07	SR-822/SHERIDAN STREET FROM DIXIE HIGHWAY TO SR-5/US 1 - FM# 4479221						Funding Source: State	
2024-09	Type of Work: PD&E/EMO STUDY			Proposed Study: PD&E			Yes Yes Yes Yes	
Program Direction:							LAP: NO	Lead Agency: FDOT
2023 MPO ROADWAY PRIORITY #9 R/W IS NEEDED							MTP Page # 5-11	MTP Timeframe: 2025
PDE	0	0	500,000	805,000	1,200,000	0	2,505,000	0
PE	0	0	0	0	0	0	0	941,147
ROW	0	0	0	0	0	0	0	38,332,475
CST	0	0	0	0	0	0	0	4,277,940
Total	0	0	500,000	805,000	1,200,000	0	2,505,000	43,551,562
City: Dania Beach/Hollywood					Ownership: State		Total Project Cost Estimate: 46,056,562	
08	SR-820/HOLLYWOOD BLVD FROM SR-5/ US-1 TO SR-A1A - FM# 4481322						Funding Source: State	
2024-10	Type of Work: FEASIBILITY STUDY			Proposed Study: Resiliency			Yes N/A Yes Yes	
Program Direction: Planning study funded in FY23 UPWP. According to FDOT's response, the project doesn't need to proceed to a PD&E Study; instead, it will move into a feasibility study for the next phase.							LAP: No	Lead Agency: FDOT
Resiliency - 2023 MMPL Roadway Priority #10. Conduct study to determine resiliency improvements. Planning study included in 4481321 SOUTHEAST BROWARD RESILIENCY STUDY - PHASE 1 - MULTIPLE LOCATIONS. Resiliency project to address known climate stressors: storm surge, sea level rise, flooding, and heat. Sponsor: Broward MPO							MTP Page # 5-13	MTP Timeframe: 2026-2030
PDE	0	0	1,350,000	0	0	0	1,350,000	0
PE	0	0	0	0	0	0	0	9,273,999
CST	0	0	0	0	0	0	0	46,370,001
Total	0	0	1,350,000	0	0	0	1,350,000	55,644,000
City: Hollywood					Ownership: State		Total Project Cost Estimate: 56,994,000	

Phase	<2025	2025	2026	2027	2028	2029	Amount Funded	Funding Needed	
09	SR-5/US-1 FROM LAS OLAS BLVD SR-842/BROWARD BLVD and Broward Blvd. from Andrews Ave. to US-1. - FM# 4534271						Funding Source: State		
2024-13	Type of Work: TRANSPORTATION PLANNING				Proposed Study: Resiliency		Yes N/A Yes Yes	LAP: No	Lead Agency: FDOT
Program Direction: Use SU for PLN phase only. MPO to lead PLN study.							MTP Page # 5-13	MTP Timeframe: 2026-2030	
Resiliency - 2023 MMPL Roadway Priority #13. Conduct study to determine resiliency improvements. Planning study included in 4480881 SR-5/US-1 FT LAUDERDALE RESILIENCY STUDY - PHASE 1. Conduct study to determine resiliency improvements. Planning study included in 4480881 SR-5/US-1 FT LAUDERDALE RESILIENCY STUDY - PHASE 1. Resiliency project to address known climate									
PLN	0	0	0	150,000	0	0	150,000	0	
PE	0	0	0	0	0	0	0	1,350,000	
Total	0	0	0	150,000	0	0	150,000	1,350,000	
City: Fort Lauderdale					Ownership: State		Total Project Cost Estimate: 1,500,000		
10	Las Olas Blvd. from US-1 to SR-A1A - FM#						Funding Source: State		
2024-14	Type of Work: Resiliency Study				Proposed Study: Resiliency		Yes N/A Yes No	LAP: No	Lead Agency: FDOT
Program Direction:							MTP Page # 5-13	MTP Timeframe: 2026-2030	
Conduct study to determine resiliency improvements. Project Sponsor: Broward MPO									
PE	0	0	0	0	0	0	0	1,500,000	
Total	0	0	0	0	0	0	0	1,500,000	
City: Fort Lauderdale					Ownership: State/Local		Total Project Cost Estimate: 1,500,000		
11	SR-5/US-1 FROM SR-858/HALLANDALE BEACH BLVD TO SR-824/PEMBROKE RD - FM# 4534291						Funding Source: State		
2024-15	Type of Work: TRANSPORTATION PLANNING				Proposed Study: Resiliency		Yes N/A Yes Yes	LAP: No	Lead Agency: FDOT
Program Direction: Use SU for PLN phase only. MPO to lead PLN study.							MTP Page # 5-13	MTP Timeframe: 2026-2030	
Resiliency - 2023 MMPL Roadway Priority #15. Conduct study to determine resiliency improvements. Planning study included in 4481321 SOUTHEAST BROWARD RESILIENCY STUDY - PHASE 1 - MULTIPLE LOCATIONS. Resiliency project to address known climate stressors: storm surge, sea level rise, flooding, and heat. PLN \$150,000 PE \$1,350,000. Project Sponsor: Broward MPO									
PLN	0	0	0	0	150,000	0	150,000	0	
PE	0	0	0	0	0	0	0	1,350,000	
Total	0	0	0	0	150,000	0	150,000	1,350,000	
City: Hallandale Beach					Ownership: State		Total Project Cost Estimate: 1,500,000		

Phase	<2025	2025	2026	2027	2028	2029	Amount Funded	Funding Needed
12 2024-16	SR-858/HALLANDALE BEACH BLVD FROM SR-5/US-1 TO SR-A1A - FM# 4534301 Type of Work: TRANSPORTATION PLANNING Proposed Study: Resiliency						Funding Source: State yes N/A Yes Yes LAP: No Lead Agency: FDOT MTP Page # 5-13 MTP Timeframe: 2026-2030	
Program Direction: Use SU for PLN phase only. MPO to lead PLN study.								
Resiliency - 2023 MMPL Roadway Priority #16. Conduct study to determine resiliency improvements. Planning study included in 4481321 SOUTHEAST BROWARD RESILIENCY STUDY - PHASE 1 - MULTIPLE LOCATIONS. Resiliency project to address known climate stressors: storm surge, sea level rise, flooding, and heat. PLN \$150,000 PE \$1,350,000. Project Sponsor: Broward MPO								
PLN	0	0	0	0	0	150,000	150,000	0
PE	0	0	0	0	0	0	0	1,350,000
Total	0	0	0	0	0	150,000	150,000	1,350,000
City: Hallandale Beach						Ownership: State		Total Project Cost Estimate: 1,500,000
13 2024-18	SE 10th St from Dixie Hwy to US-1 - FM# Type of Work: Feasibility Study Proposed Study: Feasibility						Funding Source: State Yes Yes Yes Yes LAP: No Lead Agency: FDOT MTP Page # 5-14 MTP Timeframe: 2026-2030	
Program Direction: FDOT will conduct feasibility study with SU, administered by FDOT planning.								
Conduct multimodal feasibility study. The City is concerned that once 10th street improvements are completed, additional trips will occur eastbound and the current roadway cannot handle this increase at this time. Project Sponsor: City of Deerfield Beach								
PLN	0	0	0	0	0	0	0	250,000
Total	0	0	0	0	0	0	0	250,000
City: Deerfield Beach						Ownership: State/Local		Total Project Cost Estimate: 250,000
14 2024-19	County Line Rd/HEFT Extension from I-95 to Florida's Turnpike - FM# Type of Work: Feasibility study Proposed Study: Feasibility						Funding Source: State Yes N/A Yes Yes LAP: No Lead Agency: FDOT MTP Page # 5-14 MTP Timeframe: 2026-2030	
Program Direction:								
Conduct multimodal feasibility study. Coordination will be needed with FDOT District 6. Project Sponsor: Broward MPO								
PE	0	0	0	0	0	0	0	1,500,000
Total	0	0	0	0	0	0	0	1,500,000
City: Miramar/Pembroke Park/West Park						Ownership: State		Total Project Cost Estimate: 1,500,000

Phase	<2025	2025	2026	2027	2028	2029	Amount Funded	Funding Needed	
15 Priority 2024-20	Pompano Beach FEC-SFRC connection - FM# Type of Work: New track connection Proposed Study: PD&E						Funding Source: State Yes Yes Yes Yes LAP: No MTP Page # 5-14 Lead Agency: FDOT MTP Timeframe: 2026-2030		
Program Direction: Construct track connection between FEC rail corridor and SFRC at Pompano Beach. Project requires buy in from FEC & CSX. FM# 417031-9. Project Sponsor: SFRTA									
PE	0	0	0	0	0	0	0	7,700,000	
ROW	0	0	0	0	0	0	0	35,000,000	
CST	0	0	0	0	0	0	0	35,000,000	
Total	0	0	0	0	0	0	0	77,700,000	
City: Pompano Beach					Ownership: State		Total Project Cost Estimate: 77,700,000		
16 Priority 2024-21	Griffin Rd @ Old Griffin Rd intersection - FM# Type of Work: Intersection Improvement Proposed Study: N/A						Funding Source: State Yes Yes Yes Yes LAP: No MTP Page # 5-14 Lead Agency: FDOT MTP Timeframe: 2026-2030		
Program Direction: Construct interim reconfiguration of north approach to intersection. Project Sponsor: FDOT									
PE	0	0	0	0	0	0	0	440,000	
ROW	0	0	0	0	0	0	0	2,000,000	
CST	0	0	0	0	0	0	0	2,000,000	
Total	0	0	0	0	0	0	0	4,440,000	
City: Dania Beach					Ownership: State		Total Project Cost Estimate: 4,440,000		
17 Priority 2024-22	Florida's Turnpike Interchange @ Griffin Rd/Orange Dr - FM# Type of Work: Interchange Improvements Proposed Study: N/A						Funding Source: State Yes Yes Yes Yes LAP: No MTP Page # 5-14 Lead Agency: FDOT MTP Timeframe: 2026-2030		
Program Direction: Construct improvements to interchange. The Orange Drive, Griffin Road, Turnpike interchange is congested and confusing. Project goes with FM# 406095-4. Project Sponsor: Town of Davie									
PE	0	0	0	0	0	0	0	9,240,000	
CST	0	0	0	0	0	0	0	42,000,000	
Total	0	0	0	0	0	0	0	51,240,000	
City: Davie					Ownership: State		Total Project Cost Estimate: 51,240,000		

Phase	<2025	2025	2026	2027	2028	2029	Amount Funded	Funding Needed
-------	-------	------	------	------	------	------	---------------	----------------

18 Priority 2024-23	SR-816/OAKLAND PARK AT SR-7/US-441 CENTER TURN OVERPASS - FM# 4531541						Funding Source: State		
	Type of Work: PD&E/EMO STUDY			Proposed Study: PD&E			Yes	Yes	Yes
Program Direction:							LAP: No	Lead Agency: FDOT	
2023 MPO PRIORITY #23. Construct center turn overpass. Project is associated with TSM&O/Safety Project "SR-810/Oakland Park Blvd @ SR-7/US-441". Project Sponsor: Broward MPO							MTP Page # 5-14	MTP Timeframe: 2026-2030	
PDE	0	705,000	700,000	800,000	0	0	2,205,000	0	
PE	0	0	0	0	0	0	0	7,695,000	
ROW	0	0	0	0	0	0	0	45,000,000	
CST	0	0	0	0	0	0	0	45,000,000	
Total	0	705,000	700,000	800,000	0	0	2,205,000	97,695,000	
City: Lauderdale Lakes					Ownership: State		Total Project Cost Estimate: 99,900,000		

19 Priority 2024-24	US-1/SR-5 from McNab Rd/15th St to Cypress Creek Rd/62nd St - FM#						Funding Source: State		
	Type of Work: Add eastbound left turn lane			Proposed Study: N/A			Yes	No	Yes
Program Direction:							LAP: No	Lead Agency: FDOT	
Add eastbound left-turn lane. Project Sponsor: FDOT							MTP Page # 5-14	MTP Timeframe: 2026-2030	
PE	0	0	0	0	0	0	0	441,980	
CST	0	0	0	0	0	0	0	2,009,000	
Total	0	0	0	0	0	0	0	2,450,980	
City: Fort Lauderdale					Ownership: State		Total Project Cost Estimate: 2,450,980		

Phase	<2025	2025	2026	2027	2028	2029	Amount Funded	Funding Needed
-------	-------	------	------	------	------	------	---------------	----------------

20 2024-25	Priority	SR-817/UNIVERSITY DR @ ROYAL PALM BLVD. - FM# 4495621					Funding Source: State		
		Type of Work: ADD LEFT TURN LANE(S)					Proposed Study: PD&E		
Program Direction:							LAP: No	Lead Agency: FDOT	
2023 MPO ROADWAY PRIORITY# 25-CITY OF CORAL SPRINGS FEASIBILITY STUDY; ADD DUAL LEFT-TURN LANES ON UNIVERSITY DR SOUTHBOUND AT ROYAL PALM BLVD. ENVIRONMENTAL STUDY MAY BE NEEDED							MTP Page # 5-14	MTP Timeframe: 2026-2030	
PDE	0	0	0	75,000	0	0	75,000	0	
PE	0	0	0	0	0	394,000	394,000	0	
ROW	0	0	0	0	0	0	0	466,662	
CST	0	0	0	0	0	0	0	466,662	
Total	0	0	0	75,000	0	394,000	469,000	933,324	
City: Coral Springs					Ownership: State		Total Project Cost Estimate: 1,402,324		

21 2024-26	Priority	A1A/ SE 20 AVE @ SR 810/ E HILLSBORO BLVD - FM# 4495641					Funding Source: State		
		Type of Work: INTERSECTION IMPROVEMENT					Proposed Study: PD&E		
Program Direction:							LAP: No	Lead Agency: FDOT	
2023 MPO ROADWAY PRIORITY# 26-CITY OF DEERFIELD BEACH FEASIBILITY STUDY; RECONFIGURE INTERSECTION ADDITIONAL EB TO NB TURN LANE, ALLOW THROUGH MOVEMENT EB TO WB, AND EXTEND LEFT-TURN LANE NB TO WB							MTP Page # 5-15	MTP Timeframe: 2026-2030	
PDE	0	0	0	75,000	0	0	75,000	0	
PE	0	0	0	0	0	394,000	394,000	217,129	
ROW	0	0	0	0	0	0	0	3,073,311	
CST	0	0	0	0	0	0	0	3,073,311	
Total	0	0	0	75,000	0	394,000	469,000	6,363,751	
City: Deerfield Beach					Ownership: State		Total Project Cost Estimate: 6,832,751		

Phase	<2025	2025	2026	2027	2028	2029	Amount Funded	Funding Needed
-------	-------	------	------	------	------	------	---------------	----------------

22 2024-27	Priority	SR-858/HALLANDALE BEACH BLVD @ NE 14 AVE - FM# 4495651					Funding Source: State		
		Type of Work: ADD LEFT TURN LANE(S)					Proposed Study: PD&E		
Program Direction:							LAP: No	Lead Agency: FDOT	
2023 MPO ROADWAY PRIORITY# 27- CITY OF HALLANDALE BEACH FEASIBILITY STUDY: IMPLEMENT DUAL LEFT TURN LANE EASTBOUND FROM EB HALLANDALE BEACH BLVD TO NB NE 14TH AVE. R/W NEEDED							MTP Page # 5-15	MTP Timeframe: 2026-2030	
PDE	0	0	0	75,000	0	0	75,000	0	
PE	0	0	0	0	0	394,000	394,000	0	
ROW	0	0	0	0	0	0	0	1,673,325	
CST	0	0	0	0	0	0	0	1,673,325	
Total	0	0	0	75,000	0	394,000	469,000	3,346,650	
City: Hallandale Beach					Ownership: State		Total Project Cost Estimate: 3,815,650		

23 2024-28	Priority	South Florida Rail Corridor @ Copans Rd - FM#					Funding Source: State		
		Type of Work: Grade separation					Proposed Study: PD&E		
Program Direction:							LAP: No	Lead Agency: FDOT	
Construct grade separation at railroad crossing. Feasibility study is currently in Work Program. FDOT rail office is looking at grade separation in multiple locations. Project Sponsor: Broward MPO							MTP Page # 5-15	MTP Timeframe: 2026-2030	
PE	0	0	0	0	0	0	0	5,198,600	
ROW	0	0	0	0	0	0	0	23,630,000	
CST	0	0	0	0	0	0	0	23,630,000	
Total	0	0	0	0	0	0	0	52,458,600	
City: Pompano Beach					Ownership: State		Total Project Cost Estimate: 52,458,600		

PROGRAM THRESHOLD

State Funds	Federal Funds	Local Funds	Federal, State, and Local Funds
State and Local Funds	State and Federal Funds	Federal and Local Funds	

Phase	<2025	2025	2026	2027	2028	2029	Amount Funded	Funding Needed		
24 Priority	Johnson St from US-1 to N 14th Ave - FM#						Funding Source: Federal			
2024-29	Type of Work: Resiliency Study			Proposed Study: Resiliency			🔍 No	📄 N/A	🔗 Yes	👤 Yes
Program Direction:							LAP: No	Lead Agency: TBD		
Conduct study to determine resiliency improvements. Project Sponsor: Broward MPO							MTP Page # 5-15	MTP Timeframe: 2026-2030		
PE	0	0	0	0	0	0	0	750,000		
Total	0	0	0	0	0	0	0	750,000		
City: Hollywood					Ownership: Local		Total Project Cost Estimate: 750,000			
25 Priority	E ORANGE DR FR SW 67TH AVE TO SR-7 FR SW 67TH AVE TO SR-7 - FM# 4533251						Funding Source: Federal			
2024-31	Type of Work: ADD TURN LANE(S)			Proposed Study: PD&E			🔍 Yes	📄 Yes	🔗 Yes	👤 Yes
Program Direction:							LAP: No	Lead Agency: FDOT		
2023 MMPL Roadway Priority #31							MTP Page # 5-15	MTP Timeframe: 2026-2030		
PDE	0	0	0	0	0	805,000	805,000	0		
PE	0	0	0	0	0	0	0	440,435		
ROW	0	0	0	0	0	0	0	5,661,069		
CST	0	0	0	0	0	0	0	5,661,069		
Total	0	0	0	0	0	805,000	805,000	11,762,573		
City: Davie					Ownership: Local		Total Project Cost Estimate: 12,567,573			

Phase	<2025	2025	2026	2027	2028	2029	Amount Funded	Funding Needed
26 Priority 2024-32	Coral Hills Dr from Sample Rd to NW 31st Ct - FM# Type of Work: Add Lanes & Reconstruct Proposed Study: PD&E						Funding Source: Federal No Yes Yes Yes LAP: No MTP Page # 5-16 Lead Agency: FDOT MTP Timeframe: 2026-2030	
	Program Direction: Extend left-turn lane on Coral Hills Dr at Sample Rd, widen Coral Hills Dr between Sample Rd and NW 31st to 3-lane cross section including curb and gutter, bike lanes, and new sidewalk on east side. Congestion relief is needed at each of these intersections. Vehicle backup into through lanes and the LOS is failing. Project may not need PD&E study. "Add lanes" are only turn lanes and could go towards LAP. Project Sponsor: City of Coral Springs							
PE	0	0	0	0	0	0	0	304,416
ROW	0	0	0	0	0	0	0	1,383,708
CST	0	0	0	0	0	0	0	1,383,708
Total	0	0	0	0	0	0	0	3,071,832
City: Coral Springs						Ownership: Local	Total Project Cost Estimate: 3,071,832	
27 Priority 2024-33	SE 9th St FEC Rail Crossing Realignment from Dixie Hwy to US-1 - FM# Type of Work: New FEC rail crossing Proposed Study: PD&E						Funding Source: Federal Yes Yes Yes No LAP: No MTP Page # 5-16 Lead Agency: FDOT MTP Timeframe: 2026-2030	
	Program Direction: Construct grade separation over railroad crossing. Add EB to NB left-turn lane at US-1. Realigning the FEC rail crossing will help calm traffic in the surrounding single family neighborhoods while also creating a street hierarchy in the system. FEC collaboration has not taken place. Project Sponsor: City of Hallandale Beach							
PE	0	0	0	0	0	0	0	188,133
ROW	0	0	0	0	0	0	0	855,150
CST	0	0	0	0	0	0	0	855,150
Total	0	0	0	0	0	0	0	1,898,433
City: Hallandale Beach						Ownership: Local	Total Project Cost Estimate: 1,898,433	

Phase	<2025	2025	2026	2027	2028	2029	Amount Funded	Funding Needed	
28 Priority 2024-34	University Dr from Old Club Rd to Loxahatchee Rd - FM#						Funding Source: Federal		
	Type of Work: Widening						Proposed Study: PD&E		
							Yes Yes Yes No		
Program Direction:							LAP: No	Lead Agency: FDOT	
Widen from 2 to 4 lanes with bike lanes and sidewalks. University Drive tapers from a 4-lane divided section to a 2-lane roadway south of Old Club Rd causing traffic congestion and back up delays at crossing intersections. Project Sponsor: City of Parkland							MTP Page # 5-16	MTP Timeframe: 2026-2030	
PE	0	0	0	0	0	0	0	2,073,974	
CST	0	0	0	0	0	0	0	9,427,156	
Total	0	0	0	0	0	0	0	11,501,130	
City: Parkland					Ownership: Local		Total Project Cost Estimate: 11,501,130		
29 Priority 2024-35	SW 148TH AVE FROM BASS CREEK RD TO MIRAMAR PKWY - FM# 4496431						Funding Source: Federal		
	Type of Work: PD&E/EMO STUDY						Proposed Study: PD&E		
							Yes Yes Yes Yes		
Program Direction:							LAP: No	Lead Agency: FDOT	
2022 MPO ROADWAY PRIORITY #36 WIDEN 2 TO 4 LANES WITH MEDIAN, BIKE LANES, SIDEWALKS, LANDSCAPE, HARDSCAPE, AND IRRIGATION.							MTP Page # 5-18	MTP Timeframe: 2026-2030	
PDE	0	0	0	500,000	1,500,000	0	2,000,000	0	
PE	0	0	0	0	0	0	0	1,108,153	
CST	0	0	0	0	0	0	0	7,309,787	
Total	0	0	0	500,000	1,500,000	0	2,000,000	8,417,940	
City: Miramar					Ownership: Local		Total Project Cost Estimate: 10,417,940		
30 Priority 2024-36	Miramar Blvd from Flamingo Rd to Hiatus Rd - FM#						Funding Source: Federal		
	Type of Work: Widening						Proposed Study: PD&E		
							Yes Yes Yes Yes		
Program Direction:							LAP: No	Lead Agency: FDOT	
Widen from 2 to 4 lanes with median, bicycle lanes, sidewalks, lighting, landscaping, hardscape, and irrigation. Connects to 4 lane segment east of Hiatus Road. Project Sponsor: City of Miramar							MTP Page # 5-18	MTP Timeframe: 2031-2035	
PE	0	0	0	0	0	0	0	3,559,348	
CST	0	0	0	0	0	0	0	16,178,853	
Total	0	0	0	0	0	0	0	19,738,201	
City: Miramar					Ownership: Local		Total Project Cost Estimate: 19,738,201		

Phase	<2025	2025	2026	2027	2028	2029	Amount Funded	Funding Needed	
31 Priority 2024-37	Sheridan St from 196th Ave to US-27 - FM# Type of Work: Widening Proposed Study: PD&E						Funding Source: Federal Yes Yes Yes Yes LAP: No MTP Page # 5-18		
Program Direction:							Lead Agency: FDOT MTP Timeframe: 2031-2035		
Widen from 2 to 4 lanes (includes sidewalk on one side). Project Sponsor: City of Pembroke Pines									
PE	0	0	0	0	0	0	0	2,387,088	
CST	0	0	0	0	0	0	0	10,850,401	
Total	0	0	0	0	0	0	0	13,237,489	
City: Pembroke Pines					Ownership: County		Total Project Cost Estimate: 13,237,489		
32 Priority 2024-38	Ravenswood Rd from SW 42nd St to Griffin Rd - FM# Type of Work: Widening Proposed Study: PD&E						Funding Source: Federal Yes Yes Yes Yes LAP: No MTP Page # 5-18		
Program Direction:							Lead Agency: FDOT MTP Timeframe: 2031-2035		
Widen from 2 to 4 lanes. Project Sponsor: Broward MPO									
PE	0	0	0	0	0	0	0	814,000	
ROW	0	0	0	0	0	0	0	3,700,000	
CST	0	0	0	0	0	0	0	3,700,000	
Total	0	0	0	0	0	0	0	8,214,000	
City: Dania Beach					Ownership: County		Total Project Cost Estimate: 8,214,000		
33 Priority 2024-39	Wiles Rd from Florida's Turnpike to Powerline Rd - FM# Type of Work: Widening Proposed Study: PD&E						Funding Source: Federal Yes Yes Yes Yes LAP: No MTP Page # 5-18		
Program Direction:							Lead Agency: FDOT MTP Timeframe: 2031-2035		
Widen from 4 to 6 lanes. Project Sponsor: Broward MPO									
PE	0	0	0	0	0	0	0	1,474,000	
ROW	0	0	0	0	0	0	0	6,700,000	
CST	0	0	0	0	0	0	0	6,700,000	
Total	0	0	0	0	0	0	0	14,874,000	
City: Deerfield Beach					Ownership: County		Total Project Cost Estimate: 14,874,000		

State Funds	Federal Funds	Local Funds	Federal, State, and Local Funds
State and Local Funds	State and Federal Funds	Federal and Local Funds	

Phase	<2025	2025	2026	2027	2028	2029	Amount Funded	Funding Needed	
34 2024-40	Priority Rock Island Rd from McNab Rd to Commercial Blvd - FM#						Funding Source: Federal		
	Type of Work: Add Lanes & Reconstruct						Proposed Study: PD&E Yes Yes Yes Yes LAP: No Lead Agency: FDOT MTP Page # 5-18 MTP Timeframe: 2031-2035		
Program Direction:									
Widen from 4 to 6 lanes with buffered bike lanes. Project Sponsor: City of Tamarac									
PE	0	0	0	0	0	0	0	676,059	
ROW	0	0	0	0	0	0	0	3,072,997	
CST	0	0	0	0	0	0	0	3,072,997	
Total	0	0	0	0	0	0	0	6,822,053	
City: Tamarac					Ownership: Local		Total Project Cost Estimate: 6,822,053		
35 2024-41	Priority South Florida Rail Corridor @ Sample Rd/SR-834 - FM#						Funding Source: State		
	Type of Work: Grade separation						Proposed Study: PD&E Yes Yes Yes Yes LAP: No Lead Agency: FDOT MTP Page # 5-19 MTP Timeframe: 2036-2045		
Program Direction:									
Construct grade separation at railroad crossing. Project Sponsor: Broward MPO									
PE	0	0	0	0	0	0	0	5,198,600	
ROW	0	0	0	0	0	0	0	23,630,000	
CST	0	0	0	0	0	0	0	23,630,000	
Total	0	0	0	0	0	0	0	52,458,600	
City: Pompano Beach					Ownership: State		Total Project Cost Estimate: 52,458,600		

Phase	<2025	2025	2026	2027	2028	2029	Amount Funded	Funding Needed		
36 2024-42	Priority FEC Rail Corridor @ Sample Rd/SR-834 - FM#						Funding Source: State			
	Type of Work: Grade separation						Proposed Study: PD&E			
Program Direction: Move forward with programming to access grant funding. Coordinate with 4514071 (CSMP #4)							LAP: No		Lead Agency: FDOT	
							MTP Page # 5-19		MTP Timeframe: 2036-2045	
Construct grade separation at railroad crossing. Project Sponsor: Broward MPO										
PE	0	0	0	0	0	0	0	5,198,600		
ROW	0	0	0	0	0	0	0	23,630,000		
CST	0	0	0	0	0	0	0	23,630,000		
Total	0	0	0	0	0	0	0	52,458,600		
City: Pompano Beach					Ownership: State		Total Project Cost Estimate: 52,458,600			
37 2024-43	Priority FEC Rail Corridor @ Commercial Blvd/SR-870 - FM#						Funding Source: State			
	Type of Work: Grade separation						Proposed Study: PD&E			
Program Direction: Move forward with programming to access grant funding.							LAP: No		Lead Agency: FDOT	
							MTP Page # 5-19		MTP Timeframe: 2036-2045	
Construct grade separation at railroad crossing. Project Sponsor: Broward MPO										
PE	0	0	0	0	0	0	0	5,198,600		
ROW	0	0	0	0	0	0	0	23,630,000		
CST	0	0	0	0	0	0	0	23,630,000		
Total	0	0	0	0	0	0	0	52,458,600		
City: Oakland Park					Ownership: State		Total Project Cost Estimate: 52,458,600			

Phase	<2025	2025	2026	2027	2028	2029	Amount Funded	Funding Needed	
38	Atlantic Blvd @ Powerline Rd - FM#						Funding Source: State		
2024-44	Type of Work: Intersection improvements						Yes Yes Yes Yes		
Proposed Study: PD&E						LAP: No			
Program Direction:						Lead Agency: FDOT			
Construct center turn overpass. Relieve congestion from left turns. Project Sponsor: Broward MPO						MTP Page # 5-19 MTP Timeframe: 2036-2045			
PE	0	0	0	0	0	0	0	9,900,000	
ROW	0	0	0	0	0	0	0	45,000,000	
CST	0	0	0	0	0	0	0	45,000,000	
Total	0	0	0	0	0	0	0	99,900,000	
City: Pompano Beach						Ownership: State Total Project Cost Estimate: 99,900,000			
39	SR-820/PINES BLVD. @ SR-817/UNIVERSITY DR - FM# 4465871						Funding Source: STATE		
2024-45	Type of Work: PD&E/EMO STUDY						Yes Yes Yes No		
Proposed Study: PD&E						LAP: No			
Program Direction:						Lead Agency: FDOT			
2021 MPO PRIORITY #48 IS R/W NEEDED 22-01: PDE PRE-WORK;22-02:FEASIBILITY STUDY;22-03:PDE. MPO requests to delay project to FY 2028.						MTP Page # 5-19 MTP Timeframe: 2036-2045			
PE	0	0	0	0	0	0	0	5,182,772	
ROW	0	0	0	0	0	0	0	45,000,000	
CST	0	0	0	0	0	0	0	45,000,000	
Total	0	0	0	0	0	0	0	95,182,772	
City: Pembroke Pines						Ownership: State Total Project Cost Estimate: 95,182,772			
40	Hallandale Beach Blvd Bypass from Dixie Highway to US-1 - FM#						Funding Source: State		
2024-46	Type of Work: Add Lanes & Reconstruct						Yes Yes Yes Yes		
Proposed Study: PD&E						LAP: No			
Program Direction:						Lead Agency: FDOT			
Add EB to NB left-turn lane at US-1. Project Sponsor: City of Hallandale Beach						MTP Page # 5-19 MTP Timeframe: 2036-2045			
PE	0	0	0	0	0	0	0	12,893,760	
CST	0	0	0	0	0	0	0	58,608,000	
Total	0	0	0	0	0	0	0	71,501,760	
City: Hallandale Beach						Ownership: State Total Project Cost Estimate: 71,501,760			

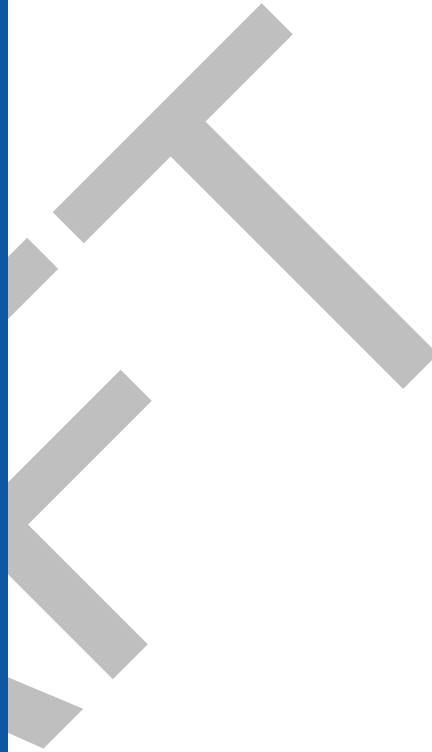
Phase	<2025	2025	2026	2027	2028	2029	Amount Funded	Funding Needed
41 Priority 2024-47	South Florida Rail Corridor @ Atlantic Blvd/SR-814 - FM# Type of Work: Grade Separation Proposed Study: PD&E						Funding Source: State Yes Yes Yes Yes LAP: No MTP Page # 5-19	
	Program Direction: Move forward with programming to access grant funding. Construct grade separation at railroad crossing. Project Sponsor: Broward MPO						Lead Agency: FDOT MTP Timeframe: 2036-2045	
PE	0	0	0	0	0	0	0	5,198,600
ROW	0	0	0	0	0	0	0	23,630,000
CST	0	0	0	0	0	0	0	23,630,000
Total	0	0	0	0	0	0	0	52,458,600
City: Pompano Beach					Ownership: State		Total Project Cost Estimate: 52,458,600	
42 Priority 2024-48	South Florida Rail Corridor @ NW 62nd/Cypress Creek - FM# Type of Work: Grade Separation Proposed Study: PD&E						Funding Source: Federal Yes Yes Yes Yes LAP: No MTP Page # 5-19	
	Program Direction: Move forward with programming to access grant funding. Construct grade separation at railroad crossing. Project Sponsor: Broward MPO						Lead Agency: FDOT MTP Timeframe: 2036-2045	
PE	0	0	0	0	0	0	0	5,198,600
ROW	0	0	0	0	0	0	0	23,630,000
CST	0	0	0	0	0	0	0	23,630,000
Total	0	0	0	0	0	0	0	52,458,600
City: Fort Lauderdale					Ownership: County		Total Project Cost Estimate: 52,458,600	

Phase	<2025	2025	2026	2027	2028	2029	Amount Funded	Funding Needed
43 Priority 2024-49	SW 196th Ave from Pines Blvd to Miramar Pkwy - FM# Type of Work: Widening Proposed Study: PD&E						Funding Source: Federal Yes Yes Yes Yes LAP: No MTP Page # 5-20	
	Program Direction: Widen from 2 to 4 lanes. Project Sponsor: Broward MPO						Lead Agency: FDOT MTP Timeframe: 2036-2045	
PE	0	0	0	0	0	0	0	4,201,855
ROW	0	0	0	0	0	0	0	19,099,340
CST	0	0	0	0	0	0	0	19,099,340
Total	0	0	0	0	0	0	0	42,400,535
City: Miramar					Ownership: Local		Total Project Cost Estimate: 42,400,535	
44 Priority 2024-50	Griffin Rd from Bonaventure Blvd to US-27 - FM# Type of Work: Add Lanes & Reconstruct Proposed Study: PD&E						Funding Source: Federal Yes Yes Yes Yes LAP: No MTP Page # 5-20	
	Program Direction: Widen Griffin Rd from 2 to 4 lanes (include new bike lanes, install solar lighting from I-75 to US-27). Project Sponsor: Town of Southwest Ranches						Lead Agency: FDOT MTP Timeframe: 2036-2045	
PE	0	0	0	0	0	0	0	3,938,963
ROW	0	0	0	0	0	0	0	0
CST	0	0	0	0	0	0	0	17,904,375
Total	0	0	0	0	0	0	0	21,843,338
City: Southwest Ranches					Ownership: County		Total Project Cost Estimate: 21,843,338	

SYSTEMS MANAGEMENT

/SAFETY

PROGRAM



Phase	<2025	2025	2026	2027	2028	2029	Amount Funded	Funding Needed		
01 2024-02	BROWARD COUNTY- SAFETY REVIEW AND FEASIBILITY ASSESSMENT - On System - FM#						Funding Source: State			
Priority	Type of Work: Feasibility Study						Proposed Study: N/A			
Program Direction: On System Priority Projects (2 Projects Annually)							LAP: No		Lead Agency: FDOT	
On System Priority Projects (2 Projects Annually)							MTP Page # 5-30		MTP Timeframe: N/A	
PDE	0	0	0	0	0	0	0	500,000		
PE	0	0	0	0	0	0	0	1,000,000		
CST	0	0	0	0	0	0	0	8,000,000		
Total	0	0	0	0	0	0	0	9,500,000		
City: Various					Ownership: State		Total Project Cost Estimate: 9,500,000			
02 2024-02	OAKLAND PARK BLVD-HIATUS RD TO NOB HILL RD - FM# 4496771						Funding Source: Federal			
Priority	Type of Work: TRAFFIC SIGNALS						Proposed Study: N/A			
Program Direction: Remove \$500,000 funding and reprogram.							LAP: Yes		Lead Agency: Broward County	
2023 PRIORITY #2 - BMPO SAFETY PROGRAM OAKLAND PARK BLVD FROM HIATUS RD TO NOB HILL ROAD. LAP WITH BROWARD COUNTY. NO ROW NEEDED.							MTP Page # 5-30		MTP Timeframe: N/A	
PE	0	0	0	0	500,000	0	500,000	0		
Total	0	0	0	0	500,000	0	500,000	0		
City: Sunrise					Ownership: County		Total Project Cost Estimate: 500,000			
03 2024-02	CLEARY BLVD FROM HIATUS RD TO UNIVERSITY DR - FM# 4496781						Funding Source: Federal			
Priority	Type of Work: TRAFFIC SIGNALS						Proposed Study: N/A			
Program Direction:							LAP: Yes		Lead Agency: Plantation	
2023 PRIORITY #2 - BMPO SAFETY PROGRAM. CLEARY BLVD FROM HIATUS RD TO UNIVERSITY DR. LAP WITH PLANTATION. NO ROW NEEDED							MTP Page # 5-30		MTP Timeframe: N/A	
PE	0	0	0	500,000	0	0	500,000	0		
Total	0	0	0	500,000	0	0	500,000	0		
City: Plantation					Ownership: Local		Total Project Cost Estimate: 500,000			

Phase	<2025	2025	2026	2027	2028	2029	Amount Funded	Funding Needed	
04	BROWARD COUNTY- SAFETY REVIEW AND FEASIBILITY ASSESSMENT - Off System - FM# 4533281						Funding Source: Federal		
2024-03	Type of Work: Feasibility Study				Proposed Study: N/A		No	No	No No
Program Direction: Project to be removed.							LAP: Yes	Lead Agency: TBD	
Off System Priority Projects (2 Projects Annually)							MTP Page # 5-30	MTP Timeframe: N/A	
PDE	0	0	0	0	0	505,000	505,000	400,000	
PE	0	0	0	0	0	0	0	800,000	
CST	0	0	0	0	0	0	0	2,600,000	
Total	0	0	0	0	0	505,000	505,000	3,800,000	
City: Various						Ownership: Local/County	Total Project Cost Estimate:	4,305,000	
05	FDOT Signal System - FM#						Funding Source: State		
2024-06	Type of Work: Signal System Improvements				Proposed Study: N/A		Yes	Yes	Yes Yes
Program Direction:							LAP: No	Lead Agency: FDOT	
\$169,227,273 is set aside for on-system traffic signal improvements during the 2045 MTP planning horizon. FDOT carries over project to support TSM&O projects.							MTP Page # 5-30	MTP Timeframe: N/A	
ENV,PE,CST	0	0	0	0	0	0	0	100,000,000	
Total	0	0	0	0	0	0	0	100,000,000	
City: Various						Ownership: State	Total Project Cost Estimate:	100,000,000	

TRANSIT

PROGRAM



Phase	<2025	2025	2026	2027	2028	2029	Amount Funded	Funding Needed
-------	-------	------	------	------	------	------	---------------	----------------

01 Priority	Andrews & 3rd Avenues Mobility Improvements SE 17th Street to Sunrise Blvd - FM#						Funding Source: Federal and Local	
	2024-01	Type of Work: Feasibility Study				Proposed Study: Feasibility		<input checked="" type="checkbox"/> Yes <input type="checkbox"/> No <input checked="" type="checkbox"/> Yes <input type="checkbox"/> No
Program Direction:							LAP: No	Lead Agency: FDOT
Reconfigure streets to be oneway oriented, with shared use path, transit-only lane, lighting, stormwater, transit, crosswalks. Potential Surtax project. Project remains on MMPL to supplement funds. Coordination is still under way. Project Sponsor: City of Fort Lauderdale							MTP Page # 5-29	MTP Timeframe: 2026-2030
PE	0	0	0	0	0	0	0	10,000,000
Total	0	0	0	0	0	0	0	10,000,000
City: Fort Lauderdale					Ownership: County		Total Project Cost Estimate: 10,000,000	

02 Priority	Hollywood/Pines Blvd. Rapid Bus from Flamingo Rd. (Pembroke Pines) to Hollywood (Young Circle) - FM#						Funding Source: State and Local	
	2024-02	Type of Work: Transit Improvement				Proposed Study: N/A		<input checked="" type="checkbox"/> Yes <input type="checkbox"/> No <input checked="" type="checkbox"/> Yes <input type="checkbox"/> No
Program Direction:							LAP: No	Lead Agency: FDOT
Implement 10-15 min limited stop bus service, mixed traffic or semiexclusive Business Access and Transit (BAT) lanes, level boarding stations, use of Transit Signal Priority (TSP)/Queue Jump technologies, mobile ticketing. County is seeking federal funds and need to finalize components and coordination. Project Sponsor: Broward County							MTP Page # 5-29	MTP Timeframe: 2026-2030
PE	0	0	0	0	0	0	0	3,074,180
CST	0	0	0	0	0	0	0	61,483,599
Total	0	0	0	0	0	0	0	64,557,779
City: Hollywood/Pembroke Pines					Ownership: State		Total Project Cost Estimate: 64,557,779	

Phase	<2025	2025	2026	2027	2028	2029	Amount Funded	Funding Needed	
03	University Dr Rapid Bus from Coconut Creek (Sample Rd) to MiamiDade Co (Golden Glades) - FM#						Funding Source: State and Local		
2024-03	Type of Work: Transit Improvement			Proposed Study: N/A			<input checked="" type="checkbox"/> Yes <input checked="" type="checkbox"/> Yes <input checked="" type="checkbox"/> Yes <input type="checkbox"/> No		
Program Direction:							LAP: No	Lead Agency: FDOT	
Implement 10-15 min limited stop bus service, mixed traffic or semiexclusive Business Access and Transit (BAT) lanes, level boarding stations, use of Transit Signal Priority (TSP)/Queue Jump technologies, mobile ticketing. County is seeking federal funds and need to finalize components and coordination. Project Sponsor: Broward County							MTP Page # 5-29	MTP Timeframe: 2031-2035	
PE	0	0	0	0	0	0	0	5,509,339	
CST	0	0	0	0	0	0	0	110,186,775	
Total	0	0	0	0	0	0	0	115,696,114	
City: Coral Springs/Cooper City/Davie/Lauderhill/Miramar/Plantation/Pembroke Pines/Tamarac/Sunrise					Ownership: State		Total Project Cost Estimate: 115,696,114		



State Funds	Federal Funds	Local Funds	Federal, State, and Local Funds
State and Local Funds	State and Federal Funds	Federal and Local Funds	Federal, State, and Local Funds

4

FLORIDA'S TURNPIKE

LIST OF PRIORITIES



**Florida's Turnpike Enterprise
Major Projects List
As of 12/31/2023
Turnpike Mainline / SR 91 (MP 0X-88) - Broward County**

Cost Feasible Plan Projects

Facility	Category	County	FPID	Limits (From / To)		Project Description	Year Needed	Phase 22 Year	Phase 32 Year	Phase 43 Year	Phase 52 Year	Phase 22 Funding	Phase 32 Funding	Phase 43 Funding	Phase 52 Funding
Turnpike Mainline / SR 91	Widening	Broward	423373-6	MP 3.3X - Miami-Dade / Broward County Line	MP 3.6X/47 - Turnpike Mainline / SR 821	Widen from 6 to 8 Lanes	2030	Complete	Complete	-	2027	-	-	-	\$4,788,000
Turnpike Mainline / SR 91	TSM&O Mainline	Broward	446223-1	MP 47 - Turnpike Mainline / SR 821	MP 51 - Johnson St	TSM&O Mainline Improvements Includes Interchange Improvement: ◆ MP 49 - Hollywood Blvd / Pines Blvd / SR 820	Existing Deficiency	Complete	Complete	-	2024-2025	-	-	-	\$152,479,000
Turnpike Mainline / SR 91	TSM&O Mainline	Broward	446224-1	MP 51 - Johnson St	MP 53 - Griffin Rd / SR 818	TSM&O Mainline Improvements	Existing Deficiency	Complete	Complete	-	2024-2025	-	-	-	\$115,636,000
Turnpike Mainline / SR 91	TSM&O Mainline	Broward	415927-4	MP 71 - Sawgrass Expwy / SR 869	MP 73 - Broward / Palm Beach County Line	TSM&O Mainline Improvements	Existing Deficiency	Complete	Complete	-	2025	-	-	-	\$46,265,000
Turnpike Mainline / SR 91	TSM&O Interchange	Broward	446224-2	-	-	TSM&O Interchange Improvement: ◆ MP 53 - Griffin Rd / SR 818	2035	-	Underway	2026	2026	-	-	\$2,612,000	\$12,528,000
Sawgrass Expressway / SR 869	Widening	Broward	437155-5	MP 0 - South of I-75 / I-595 / NW 8th St (Future)	MP 0.5 - South of Sunrise Blvd / SR 838	Widen from 6 to 10 Lanes Includes New Interchange: ◆ MP 0 - NW 8th St	2025	Complete	Underway	Underway	2026	-	-	-	\$129,987,000
Sawgrass Expressway / SR 869	Widening	Broward	437155-1	MP 0.5 - South of Sunrise Blvd / SR 838	MP 4.1 - North of Oakland Park Blvd / SR 816	Widen from 6 to 10 Lanes Includes Interchange Improvements: ◆ MP 1 - Sunrise Blvd / SR 838 ◆ MP 1B - Pat Salerno Dr ◆ MP 3 - Oakland Park Blvd / SR 816	2025	Complete	Underway	Underway	2025	-	-	-	\$322,635,000
Sawgrass Expressway / SR 869	Widening	Broward	437155-6	MP 4.1 - North of Oakland Park Blvd / SR 816	MP 7.5 - South of Atlantic Blvd / SR 814	Widen from 6 to 10 Lanes Includes Interchange Improvement: ◆ MP 5 - Commercial Blvd / SR 870	2025	Complete	Underway	Underway	2026	-	-	-	\$153,007,000
Sawgrass Expressway / SR 869	Widening	Broward	435461-1	MP 9 - North of Atlantic Blvd / SR 814	MP 12 - North of Sample Rd / SR 834	Widen from 6 to 10 Lanes Includes Interchange Improvement: ◆ MP 11 - Sample Rd / SR 834	2030	Complete	Underway	-	2024	-	-	-	\$113,052,000
Sawgrass Expressway / SR 869	Widening	Broward	435461-4	MP 12 - North of Sample Rd / SR 834	MP 14.8 - South of University Dr / SR 817	Widen from 6 to 10 Lanes Includes Interchange Improvement: ◆ MP 14 - Coral Ridge Dr	2035	Complete	Underway	-	2026	-	-	-	\$116,426,000

Notes:
 FPID = Financial Project Identification
 MP = Milepost
 ThL = Thru Lane(s)
 TSM&O = Transportation Systems Management and Operations
 Phase 22 = Project Development and Environment
 Phase 32 = Design
 Phase 43 = Right-of-Way Acquisition
 Phase 52 = Construction

**Florida's Turnpike Enterprise
Major Projects List
As of 12/31/2023
Turnpike Mainline / SR 91 (MP 0X-88) - Broward County**

Cost Feasible Plan Projects (continued)

Facility	Category	County	FPID	Limits (From / To)		Project Description	Year Needed	Phase 22 Year	Phase 32 Year	Phase 43 Year	Phase 52 Year	Phase 22 Funding	Phase 32 Funding	Phase 43 Funding	Phase 52 Funding
Sawgrass Expressway / SR 869	Widening	Broward	435461-5	MP 14.8 - South of University Dr / SR 817	MP 18.4 - North of US 441	Widen from 6 to 10 Lanes Includes Interchange Improvement: ◆ MP 15 - University Dr / SR 817	2025	Complete	Underway	-	2026	-	-	-	\$109,060,000
Sawgrass Expressway / SR 869	Widening	Broward	437224-1	MP 18.4 - North of US 441	MP 22 - Powerline Rd	Widen from 6 to 10 Lanes and Collector-Distributor Lanes Includes Interchange Improvements: ◆ MP 18 - US 441 ◆ MP 19 - Lyons Rd ◆ MP 21A/B - Turnpike Mainline / SR 91 / SW 10th St	2035	Complete	2025	-	2031	-	\$14,000,000	-	\$536,111,000

Notes:

FPID = Financial Project Identification
 MP = Milepost
 ThL = Thru Lane(s)
 TSM&O = Transportation Systems Management and Operations
 Phase 22 = Project Development and Environment
 Phase 32 = Design
 Phase 43 = Right-of-Way Acquisition
 Phase 52 = Construction

**Florida's Turnpike Enterprise
Major Projects List
As of 12/31/2023
Turnpike Mainline / SR 91 (MP 0X-88) - Broward County**

Unfunded Projects

Facility	Category	County	FPID	Limits (From / To)		Project Description	Year Needed	Phase 22 Year	Phase 32 Year	Phase 43 Year	Phase 52 Year	Phase 22 Funding	Phase 32 Funding	Phase 43 Funding	Phase 52 Funding
Turnpike Mainline / SR 91	Widening	Broward	449709-1	MP 47 - Turnpike Mainline / SR 821	MP 54 - I-595 / SR 84 / US 441	Widen from 8 to 10 Lanes w/ThL Includes Interchange Improvements: ◆ MP 49 - Hollywood Blvd / Pines Blvd / SR 820 ◆ MP 53 - Griffin Rd / SR 818	2030	2028	-	-	-	\$4,500,000	-	-	-
Turnpike Mainline / SR 91	Widening	Broward	452073-1	MP 54 - I-595 / SR 84 / US 441	MP 60 - South of Oakland Park Blvd	Widen from 8 to 10+ Auxiliary Lanes w/ThL Includes Interchange Improvement: ◆ MP 58 - Sunrise Blvd / SR 838	2025	Complete	2029	-	-	-	\$11,550,000	-	-
Turnpike Mainline / SR 91	Widening	Broward	452075-1	MP 60 - South of Oakland Park Blvd	MP 62 - South of Commercial Blvd / SR 870	Widen from 8 to 10+ Auxiliary Lanes w/ThL Includes New Interchange: ◆ MP 61 - Oakland Park Blvd	2025	Complete	2029	2029	-	-	\$19,200,000	\$29,500,000	-
Turnpike Mainline / SR 91	Widening	Broward	452076-1	MP 62 - South of Commercial Blvd / SR 870	MP 66 - Atlantic Blvd / SR 814	Widen from 8 to 10+ Auxiliary Lanes w/ThL Includes Interchange Improvements: ◆ MP 62 - Commercial Blvd / SR 870 ◆ MP 66 - Atlantic Blvd / SR 814	2030	Complete	2027	2029	-	-	\$13,860,000	\$93,000	-
Turnpike Mainline / SR 91	Widening	Broward	452077-1	MP 66 - Atlantic Blvd / SR 814	MP 69 - Sample Rd / SR 834	Widen from 6 to 10 Lanes w/ThL Includes Interchange Improvement: ◆ MP 69 - Sample Rd / SR 834	2025	Complete	2026	-	-	-	\$26,820,000	-	-
Turnpike Mainline / SR 91	Widening	Broward	452078-1	MP 69 - Sample Rd / SR 834	MP 70 - Wiles Rd	Widen from 6 to 10 Lanes w/ThL	2025	Complete	2025	-	-	-	\$1,710,000	-	-
Turnpike Mainline / SR 91	Widening	Broward	452114-1	MP 70 - Wiles Road	MP 73 - Broward / Palm Beach County Line	Widen from 6/8 to 10 Lanes w/ThL Includes Interchange Improvement: ◆ MP 71 - Sawgrass Expwy / SR 869	2035	Complete	2027	2030	-	-	\$7,300,000	\$1,000,000	-
Turnpike Mainline / SR 91	Widening	Broward / Palm Beach	447716-2	MP 71.5 - North of Sawgrass Expwy / SR 869	MP 77 - North of Glades Rd / SR 808	Widen from 8 to 10 Lanes w/ThL	2035	2028	-	-	-	\$5,000,000	-	-	-
Turnpike Mainline / SR 91	Interchange	Broward	-	-	-	Interchange Improvement: ◆ MP 47 - Turnpike Mainline / SR 821	2025	-	-	-	-	-	-	-	-
Turnpike Mainline / SR 91	Interchange	Broward	452076-2	-	-	New Interchange: ◆ MP 64 - Cypress Creek Rd	-	Complete	-	-	-	-	-	-	-
Turnpike Mainline / SR 91	Interchange	Broward	452077-2	-	-	Interchange Improvement: ◆ MP 67 - Coconut Creek Pkwy / ML King Blvd	2025	Complete	2025	2027	-	-	\$12,500,000	\$4,200,000	-

Notes:
 FPID = Financial Project Identification
 MP = Milepost
 ThL = Thru Lane(s)
 Phase 22 = Project Development and Environment
 Phase 32 = Design
 Phase 43 = Right-of-Way Acquisition
 Phase 52 = Construction

**Florida's Turnpike Enterprise
Major Projects List
As of 12/31/2023
Turnpike Mainline / SR 91 (MP 0X-88) - Broward County**

Partnership Projects

Facility	Category	County	FPID	Limits (From / To)		Project Description	Year Needed	Phase 22 Year	Phase 32 Year	Phase 43 Year	Phase 52 Year	Phase 22 Funding	Phase 32 Funding	Phase 43 Funding	Phase 52 Funding
Turnpike Mainline / SR 91	New Interchange	Broward	417218-2	-	-	New Interchange: ◆ MP 52 - Stirling Rd	-	2025	-	-	-	\$2,000,000	-	-	-
Sawgrass Expressway / SR 869	Interchange	Broward	437155-1	-	-	Interchange Improvements: ◆ MP 1B - Pat Salerno Dr (New Ramps to/from North Only)	-	Complete	-	-	2025	-	-	-	Included with 437155-1
SW 10th Street Connector	New Road Construction	Broward	439891-1	Turnpike Mainline / SR 91	I-95	New Road Construction: ◆ SW 10th St Connector	-	Complete	-	-	2025	-	-	-	\$92,703,000

Notes:

FPID = Financial Project Identification
 MP = Milepost
 Phase 22 = Project Development and Environment
 Phase 32 = Design
 Phase 43 = Right-of-Way Acquisition
 Phase 52 = Construction

DRAFT