

Community Meeting

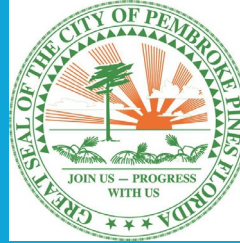
Pembroke Road

From SW 145th Ave to S Flamingo Road

October 10, 2023

WELCOME

Host
City of Pembroke Pines
City of Miramar



Organizer



**Consultant
Team**

Kimley-Horn
Alta Planning+Design
Media Relations Group



Broward MPO



Who is the Broward MPO?

- A federally chartered entity responsible for transportation decision making in the Broward region
 - Influence the expenditure of federal and state transportation funds at the regional level
- MPO Board
 - 31 municipalities
 - Broward County
 - Broward County School Board
 - South Florida Regional Transportation Authority (Tri-Rail)
- Develop plans, conduct studies, establish initiatives and programs

Broward MPO Mission:

To collaboratively plan, prioritize, and fund the delivery of diverse transportation options.

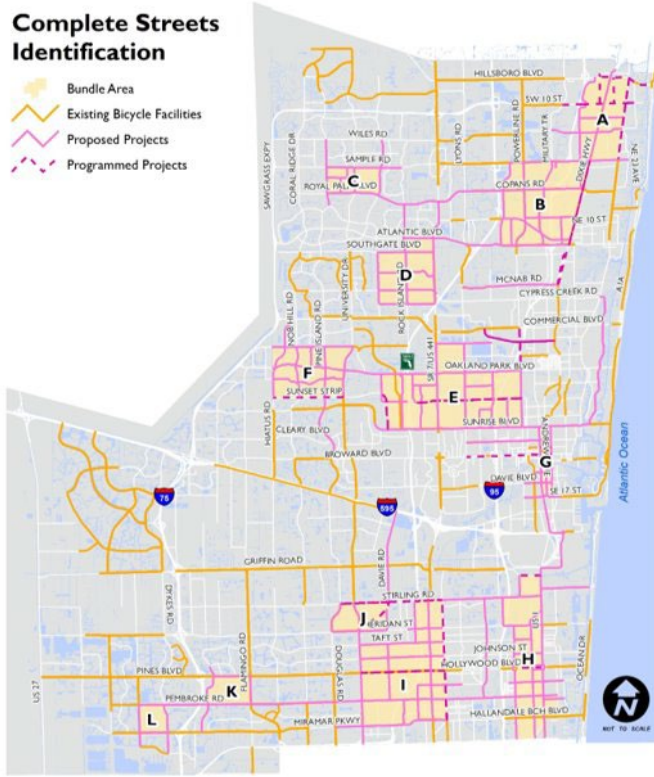
Broward MPO Vision:

Our work will have measurable positive impact by ensuring transportation projects are well selected, funded, and delivered

Complete Streets Master Plan

Complete Streets Identification

- Bundle Area
- Existing Bicycle Facilities
- Proposed Projects
- Programmed Projects



- Identified in the Broward MPO's Complete Streets Masterplan(CSMP).
- CSMP guides future investments by creating a prioritized list of projects based on data and community input
- Feedback from Broward residents and partners is key to developing a list of projects that meet the needs of local communities
- Project Identification
 - Bundle areas (based on high demand and equity)
 - 200 miles of facilities multimodal facilities identified
 - Fills vital gaps in Broward's bicycle and pedestrian network.

Project Background

- Complete Streets Master Plan (CSMP)
- Corridor Enhancements
 - Increase safety
 - Enhance connectivity
 - Reduce speeding





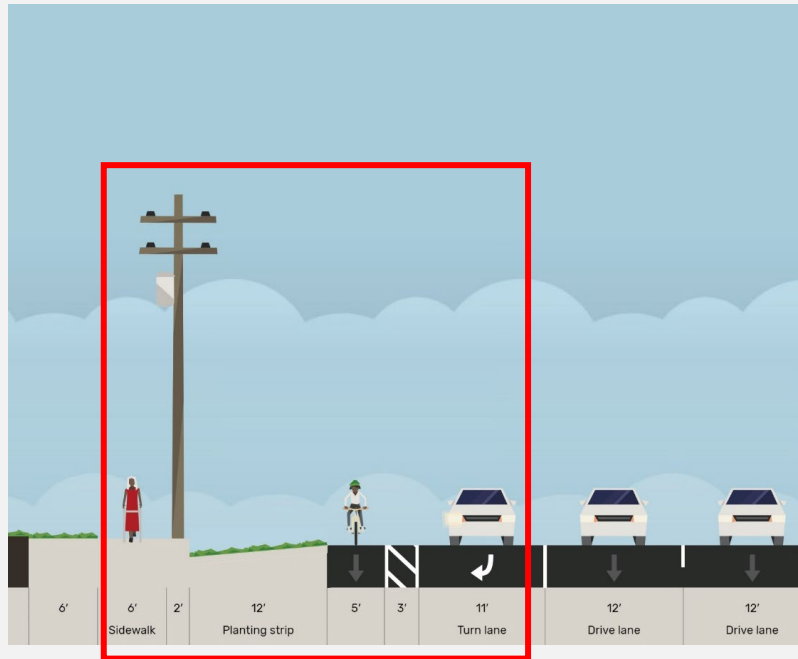
- Recommendations include:
 - Wider sidewalks
 - Separated bicycle lanes
 - Connectivity improvements to the Flamingo Greenway.
 - New crosswalks
 - High visibility crosswalk markings

Project Alternates

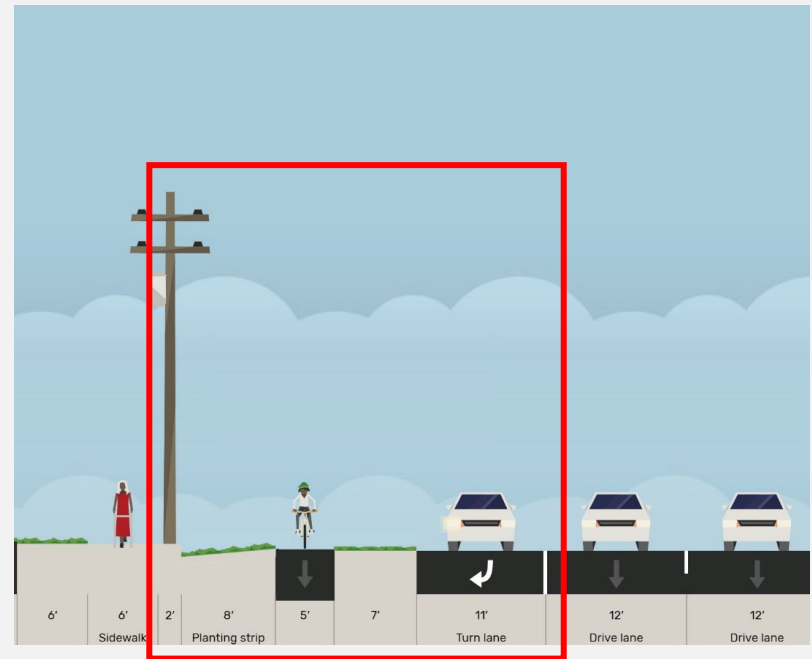
- Project alternates:
 - Alternate 1: Shoulder expansion to include separated/buffered bicycle lanes. This alternate will primarily use asphalt.
 - Alternate 2: Sidewalk level bicycle lanes. This alternate will primarily use concrete.

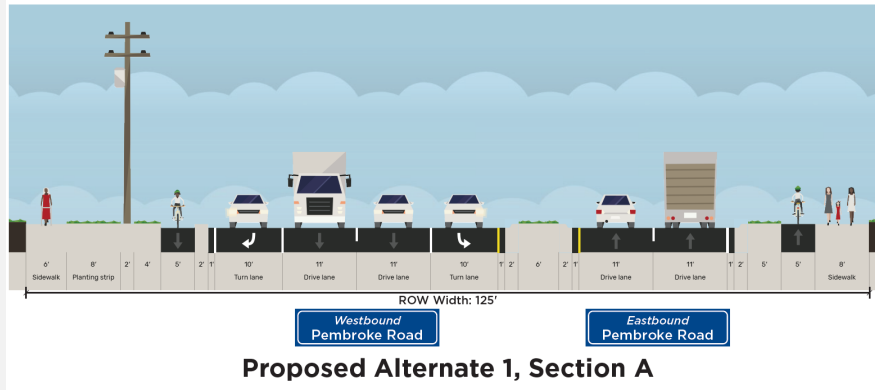
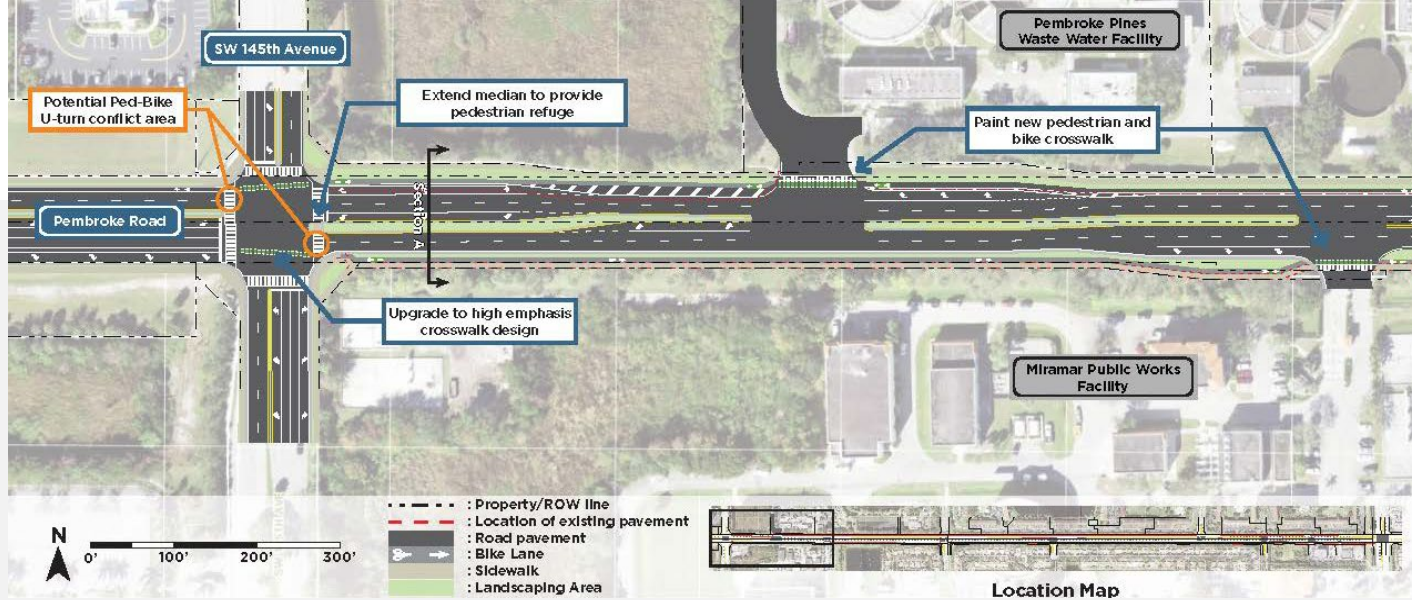
Detailed Alternate Difference

Alternate 1



Alternate 2

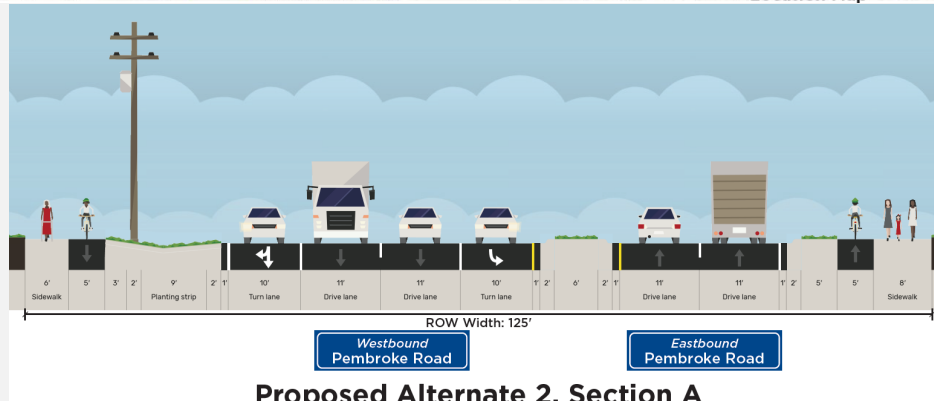
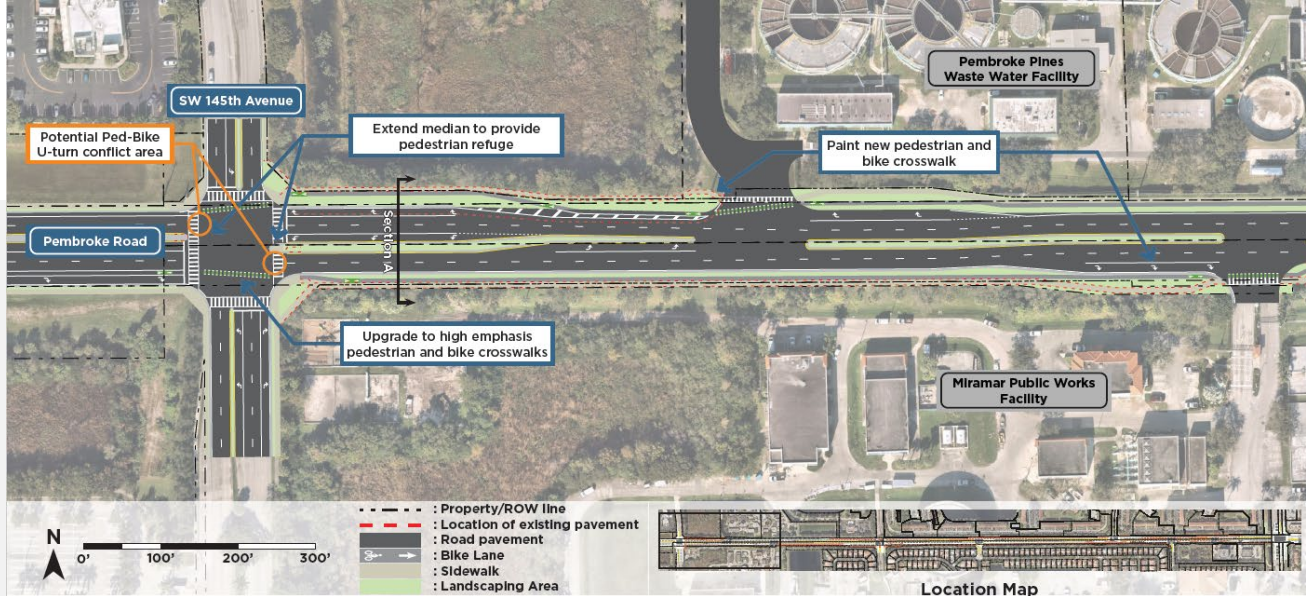




Pembroke Road | 2023 | Community Meeting

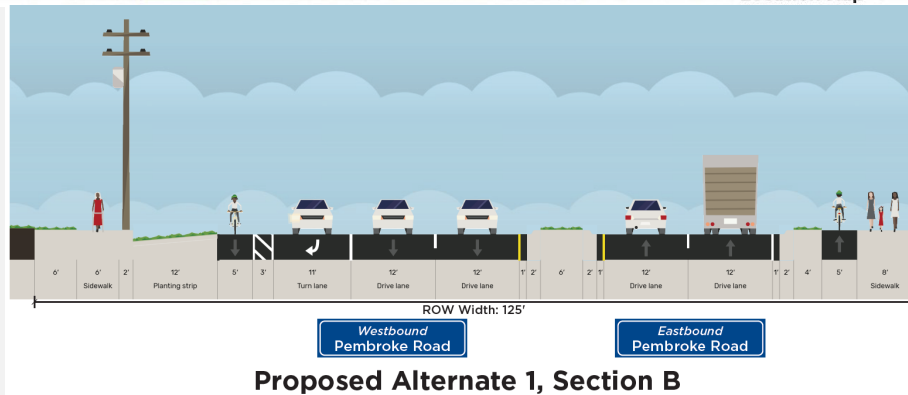
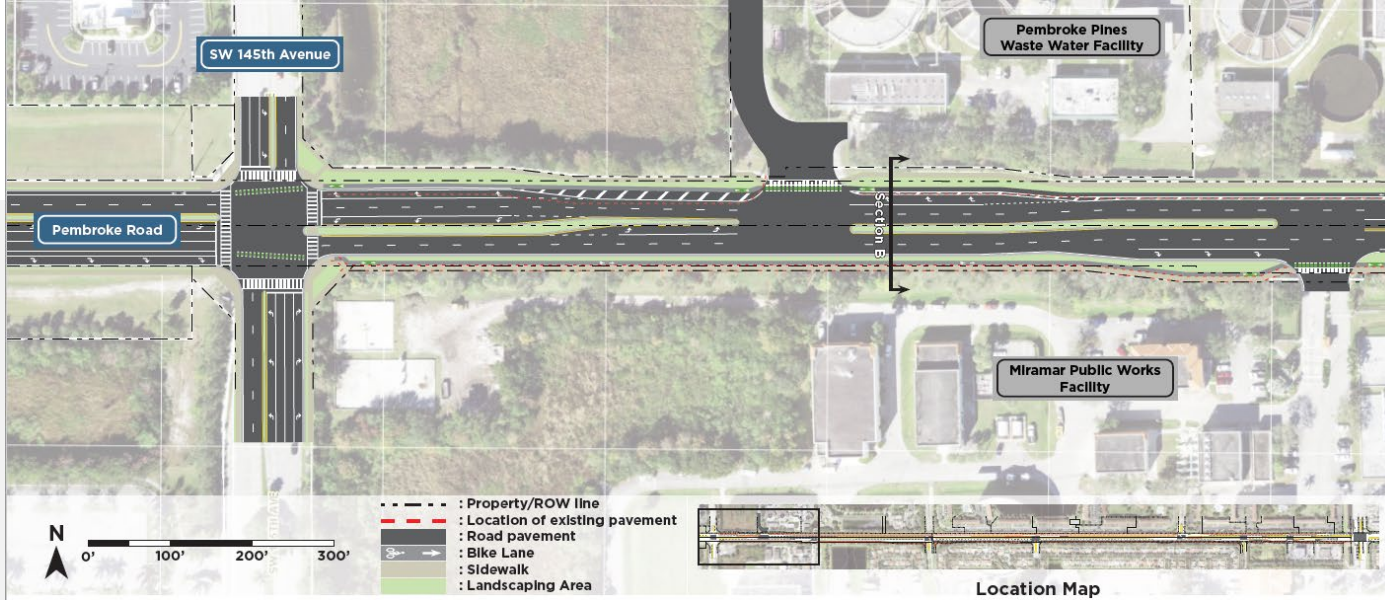
Alternate 1 – Section A

(Pembroke road east of SW 145th Avenue)



Proposed Alternate 2, Section A

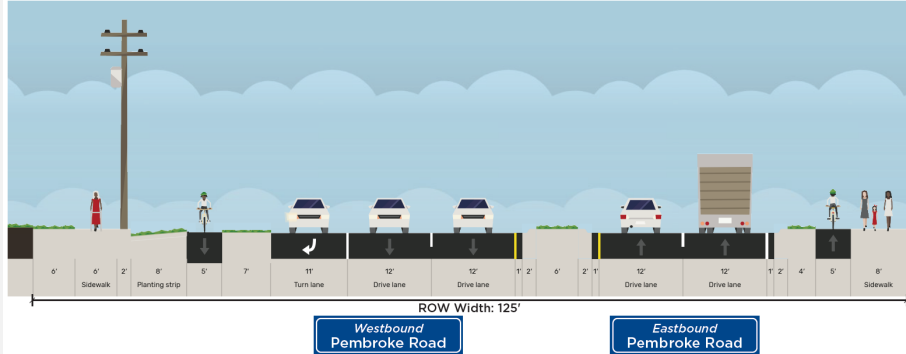
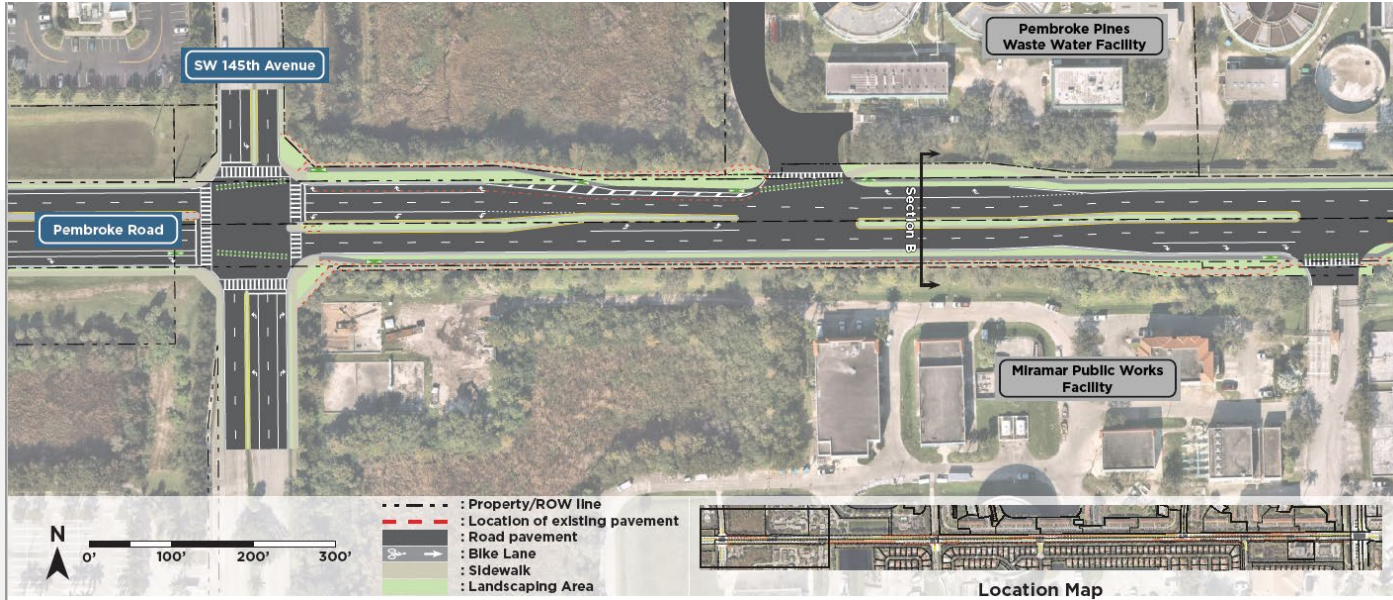
Pembroke Road | 2023 | **Community Meeting**
Alternate 2 – Section A
(Pembroke road east of SW 145th Avenue)



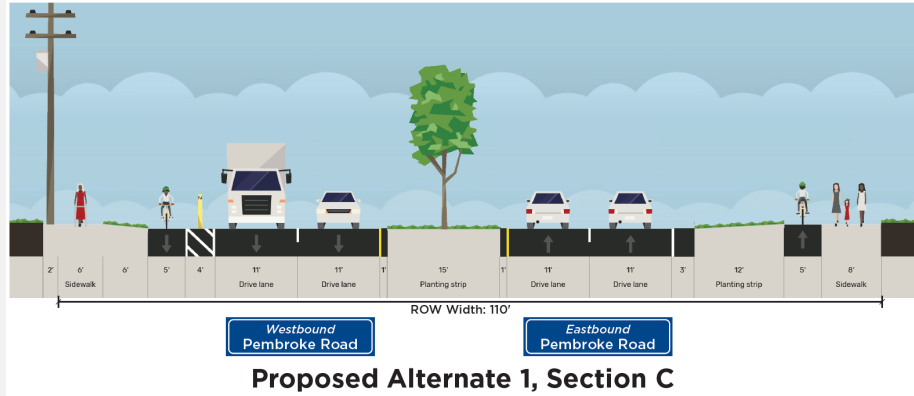
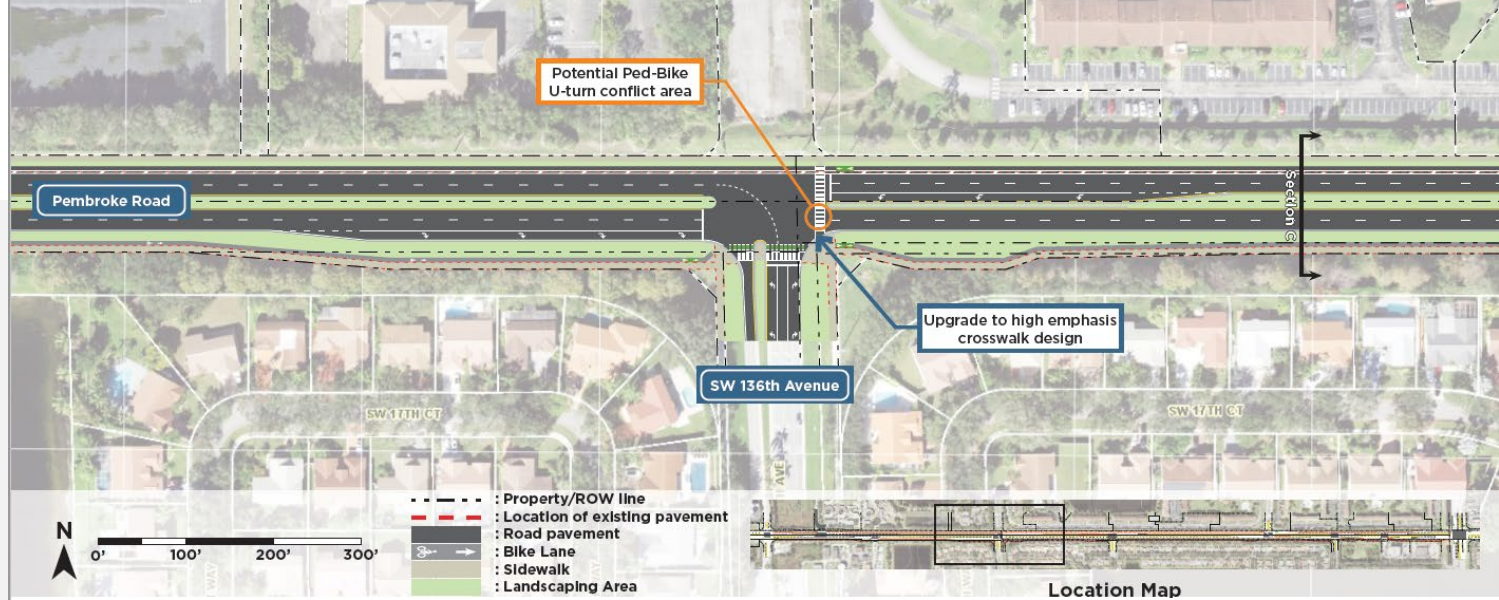
Proposed Alternate 1, Section B

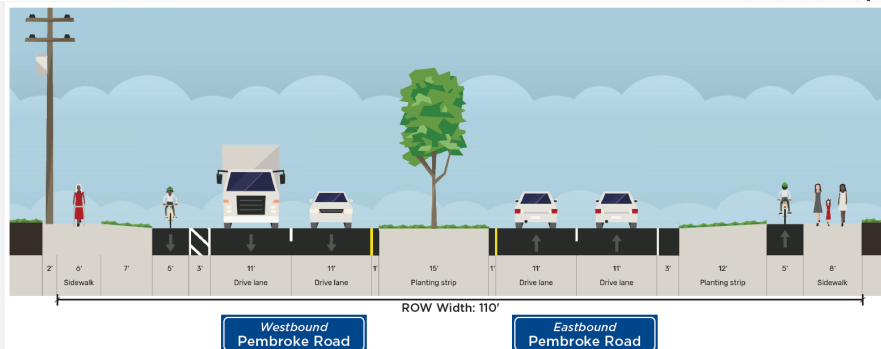
Pembroke Road | 2023 | Community Meeting

Alternate 1 – Section B
(Pembroke Road east of SW 145th Avenue)

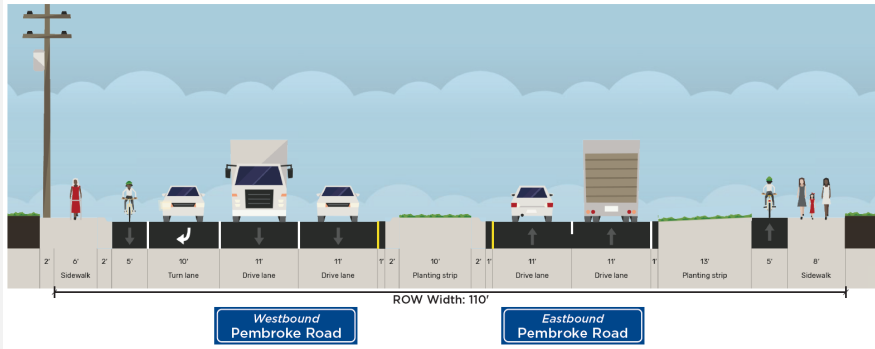
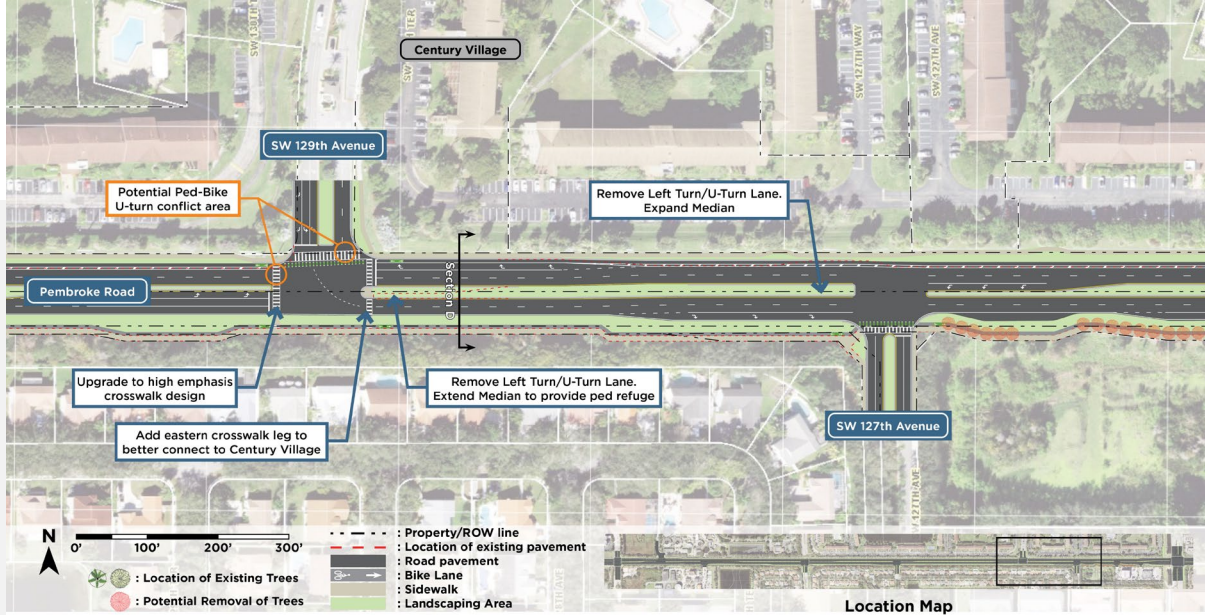


Proposed Alternate 2, Section B





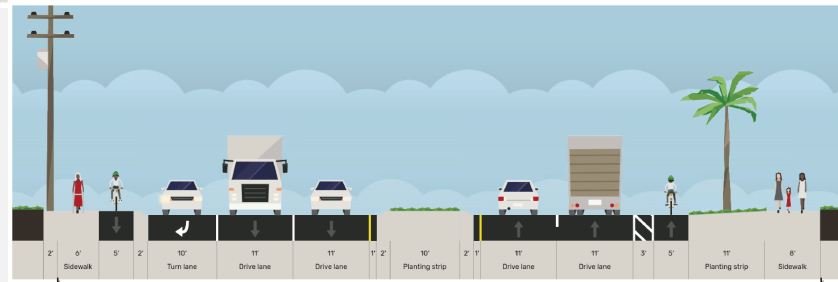
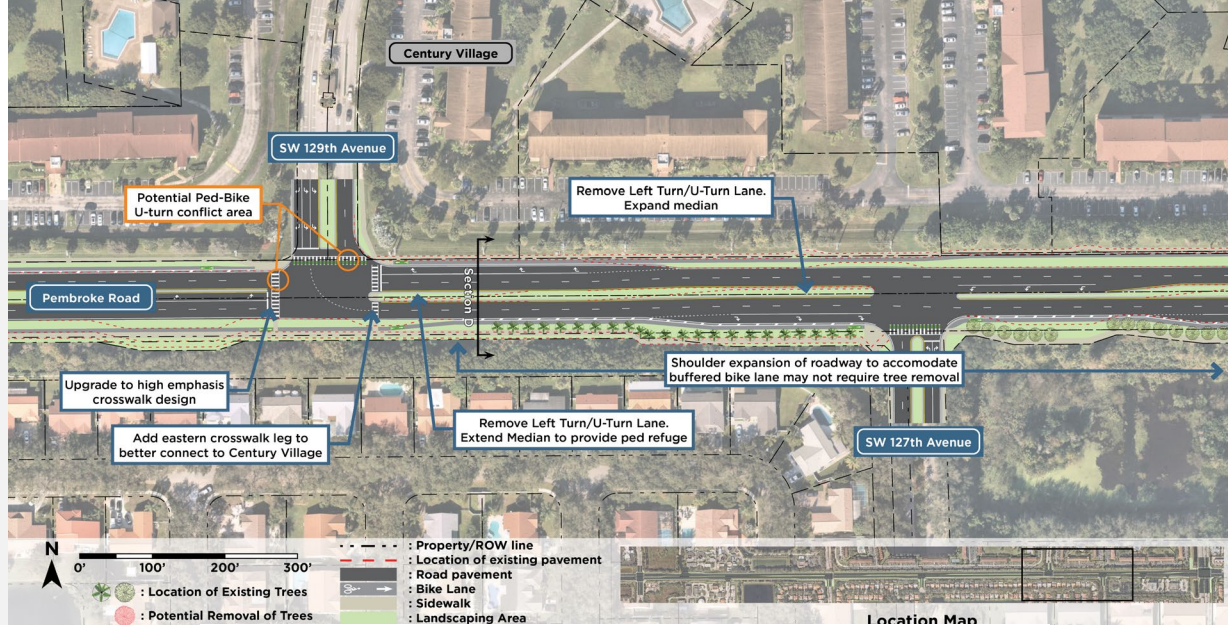
Proposed Alternate 2, Section C



Proposed Alternate 1, Section D

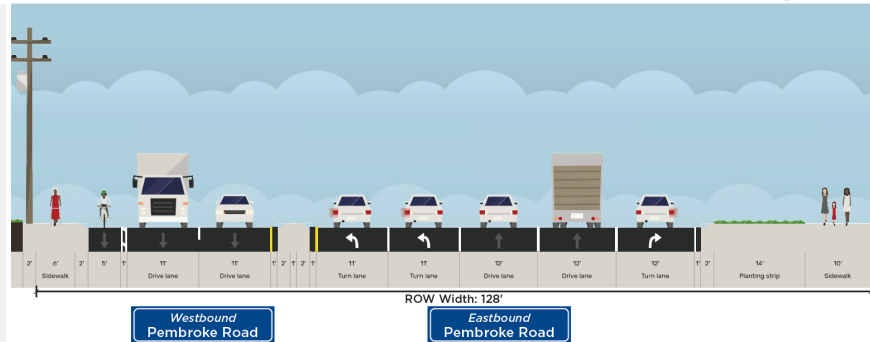
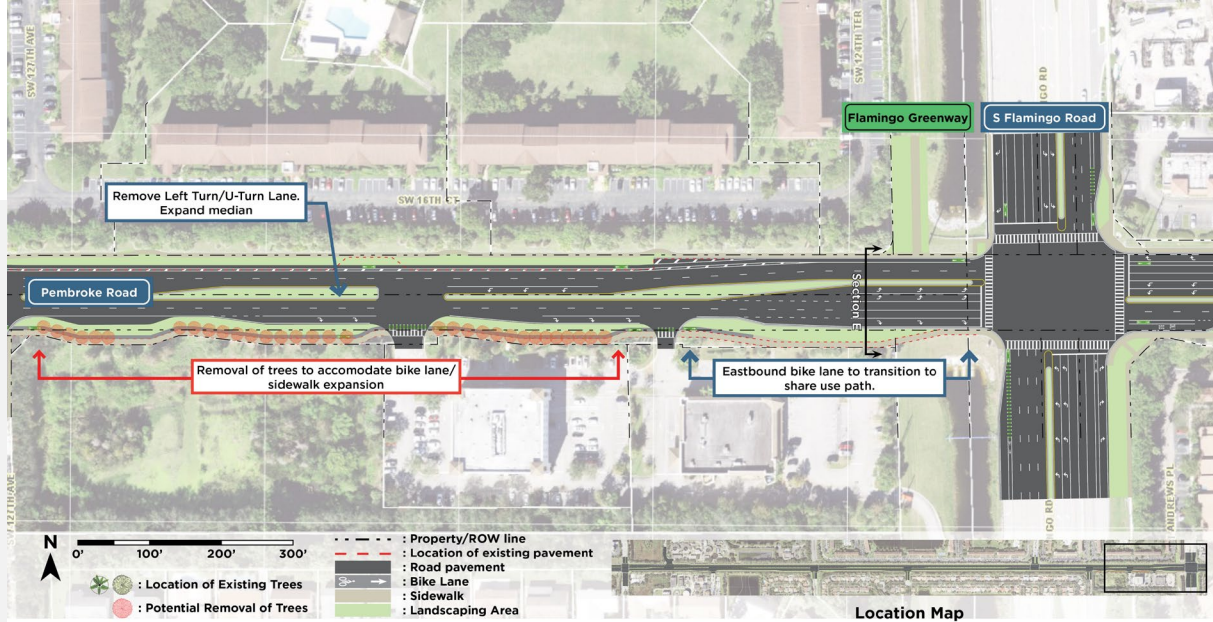
Pembroke Road | 2023 | Community Meeting

Alternate 1 – Section D (Pembroke Road east of SW 129th Avenue)



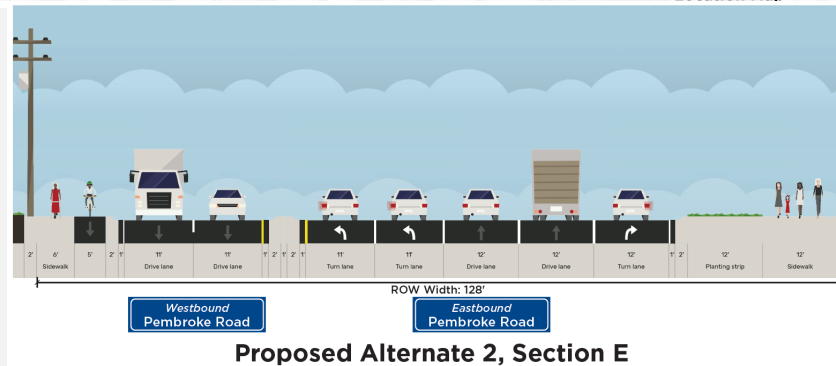
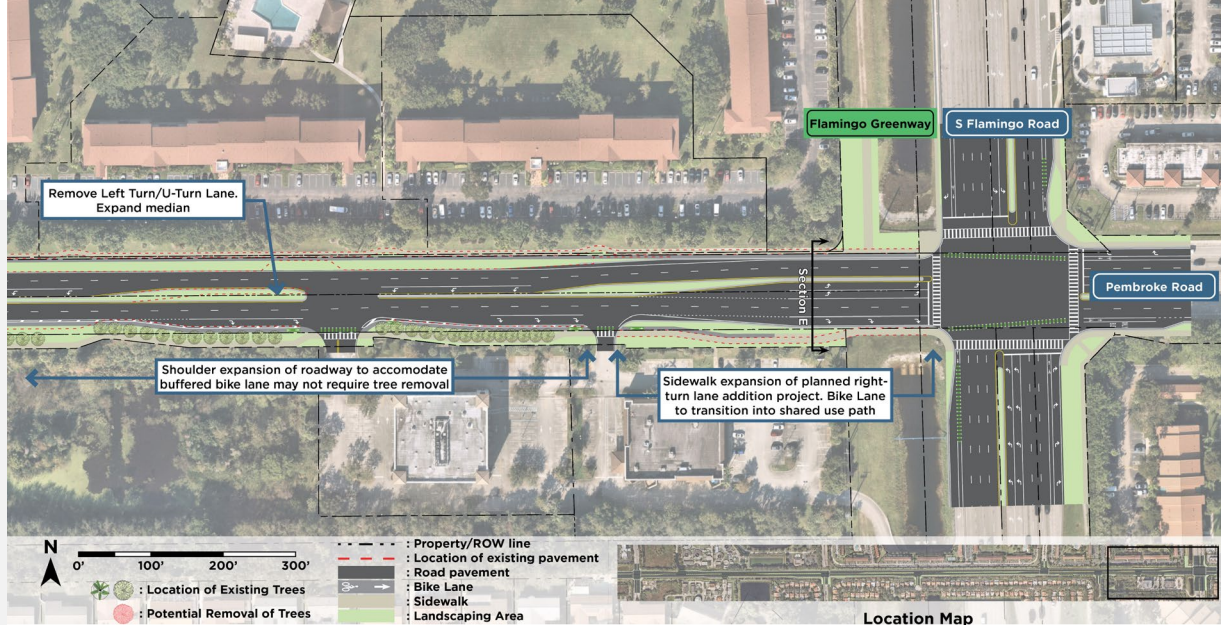
Westbound Pembroke Road
Eastbound Pembroke Road
Proposed Alternate 2, Section D

Pembroke Road | 2023 | Community Meeting
Alternate 2 – Section D
(Pembroke Road east of SW 129th Avenue)



Proposed Alternate 1, Section E

Pembroke Road | 2023 | Community Meeting
Alternate 1 – Section E
(Pembroke Road west of S Flamingo Road)



Proposed Alternate 2, Section E

Pembroke Road | 2023 | **Community Meeting**
Alternate 2 – Section E
(Pembroke Road west of S Flamingo Road)

Schedule

- Design funding in 2025
- Construction funding in 2028

Phase	Fund Source	2024	2025	2026	2027	2028	Total
PEMBROKE RD FROM SW 145TH AVE TO FLAMINGO ROAD - FM# 4496901						Length: 1.532	*Non-SIS*
Type of Work: BIKE LANE/SIDEWALK						Lead Agency: CITY OF PEMBROKE PINES	
2023 MPO CSMP PRIORITY #7 PROTECTED BICYCLE LANES AND WIDER SIDEWALKS LAP PROJECT WITH PEMBROKE PINES						MTP Pg.: 5-30	
PE	SU	0	253,948	0	0	0	253,948
PE	TALU	0	711,337	0	0	0	711,337
CST	SU	0	0	0	0	7,495,223	7,495,223
Total		0	965,285	0	0	7,495,223	8,460,508
<i>Prior Years Cost</i>			<i>Future Years Cost</i>			<i>Total Project Cost</i>	
						8,460,508	



Next Steps

- Compile feedback, questions and comments from this meeting.
- Refine planning-level cost estimates
- Prepare plans with specific renderings of recommended improvements.
- Present preferred alternative at a later meeting.
- [Pembroke Road \(browardmpo.org\)](http://browardmpo.org)

MPO Project Contact:

Fazal Qureshi

(qureshif@browardmpo.org)

