



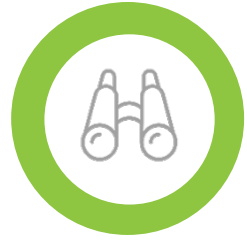
Move People & Goods | Create Jobs | Strengthen Communities

DRAFT

Municipal Surtax Workshop Draft Project Prioritization Criteria

October 23, 2019

Workshop Agenda



Overview



Draft Criteria



Work Mix



Questions

Broward MPO's Municipal Surtax Responsibilities

- According to the Interlocal Agreement (ILA) between Broward County and the MPO: the Technical Advisory Committee (TAC), Citizens Advisory Committee (CAC) and the MPO Board are **not** required to take any action on the prioritization efforts by the MPO Surtax Services staff.
- The ILA requires the MPO Surtax Services staff to brief the MPO Board at least twice per year and the TAC/CAC at least four times per year on the **status** of the MPO's work to review, rank, and prioritize municipal projects.

Broward MPO's Municipal Surtax Role

Review

Rank

Prioritize














Municipal Project Prioritization Process (MP3)

- Alleviate Congestion
- Enhance Connectivity

**Broward County
Transportation
Surtax Ordinance**

- Project Readiness (“Shovel Readiness”)

Draft Municipal Project Prioritization Criteria

Criteria	Alleviate Congestion	Enhance Connectivity	Interlocal Agreement	Community Emphasis
Employment / Population Density				
Roadway Level of Service				
Access / Support to Transit Service				
Connection to existing facilities				
Incident Delay				
Project Performance				
Equity				
Resiliency				

Draft Municipal Project Prioritization Criteria

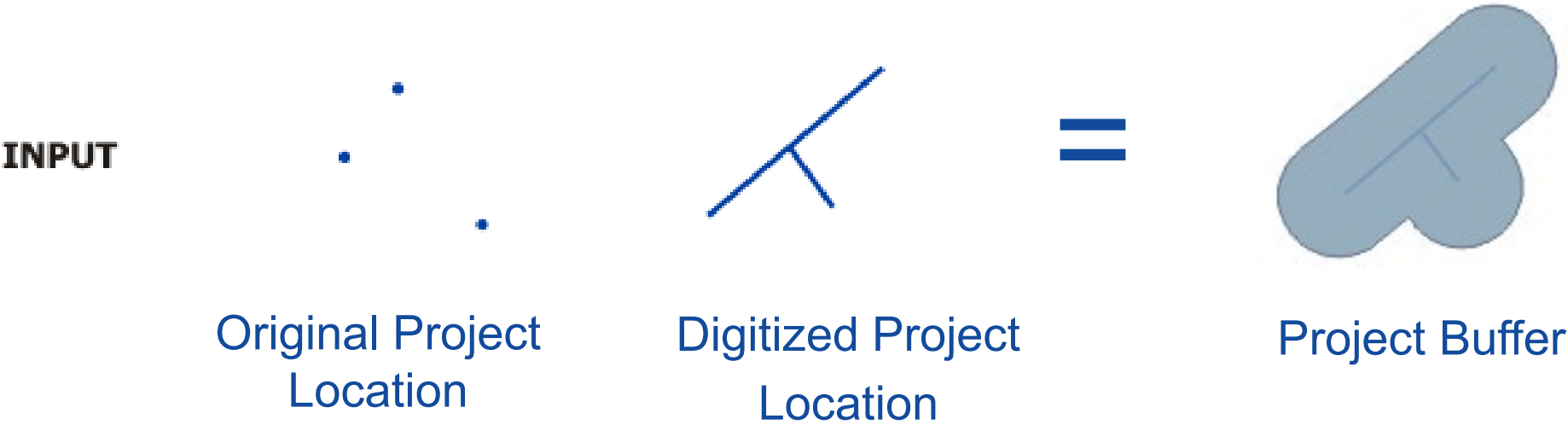


Erin Emmons, GISP

Kimley-Horn

Surtax Services Consultant to the Broward MPO

Geographical Ranking Approach



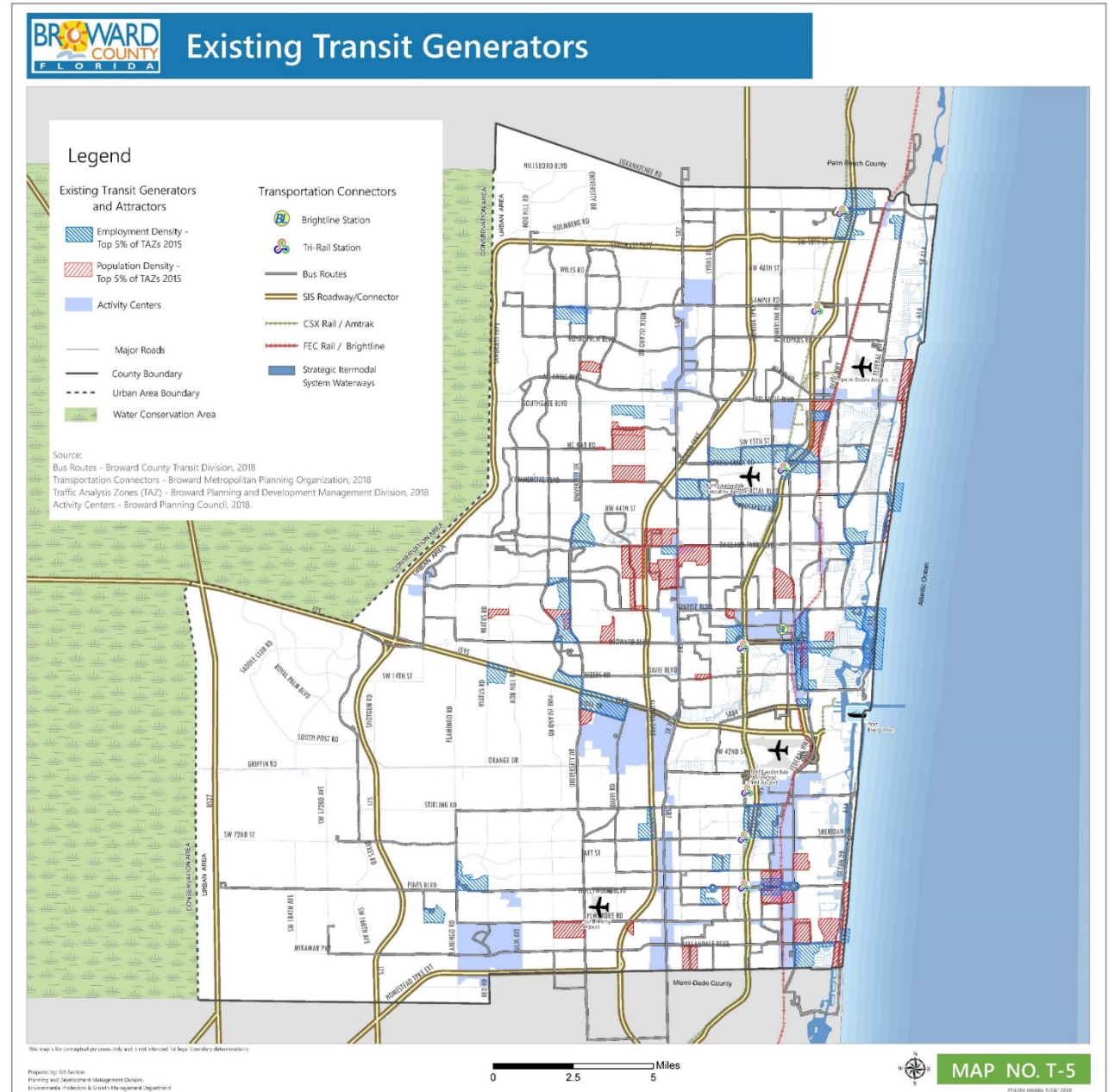
Employment – Population Density

Assessment Buffer: ¼ mile

Project Evaluation: Connection to or adjacent to one or more Traffic Analysis Zones (TAZs) with the top 5% employment and/or population density areas, identified by Broward County.

Support of Ordinance: Alleviate Congestion & Enhance Connectivity

Source: Broward County Planning and Development Management Division



Roadway Level of Service (LOS)

Assessment Buffer: 200 ft

Project Evaluation: Based on Level of Service (LOS) of connected roadway network.

Support of Ordinance: Alleviate Congestion

Source: *FDOT D4 LOS Assessment Report / FDOT LOS Map Package*



Access / Support to Transit Service

Assessment Buffer: ¼ mile

Project Evaluation: Access / support to existing transit services and multimodal connections.

Support of Ordinance: Alleviate Congestion & Enhance Connectivity

**Source: Broward County Transit Routes
SFRTA / Tri-Rail**



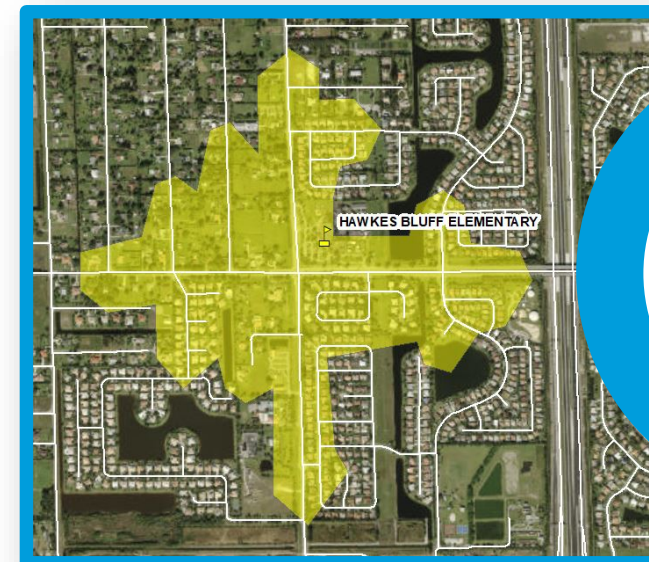
Connection to Existing Facilities

Assessment Buffer: 200 ft. / *½ mile

Project Evaluation: Connections to an existing, like or supporting facility / *Proximity to Public Schools

Support of Ordinance: Enhance Connectivity

Source: Based on scope and project description and Broward County Public Schools GIS layer



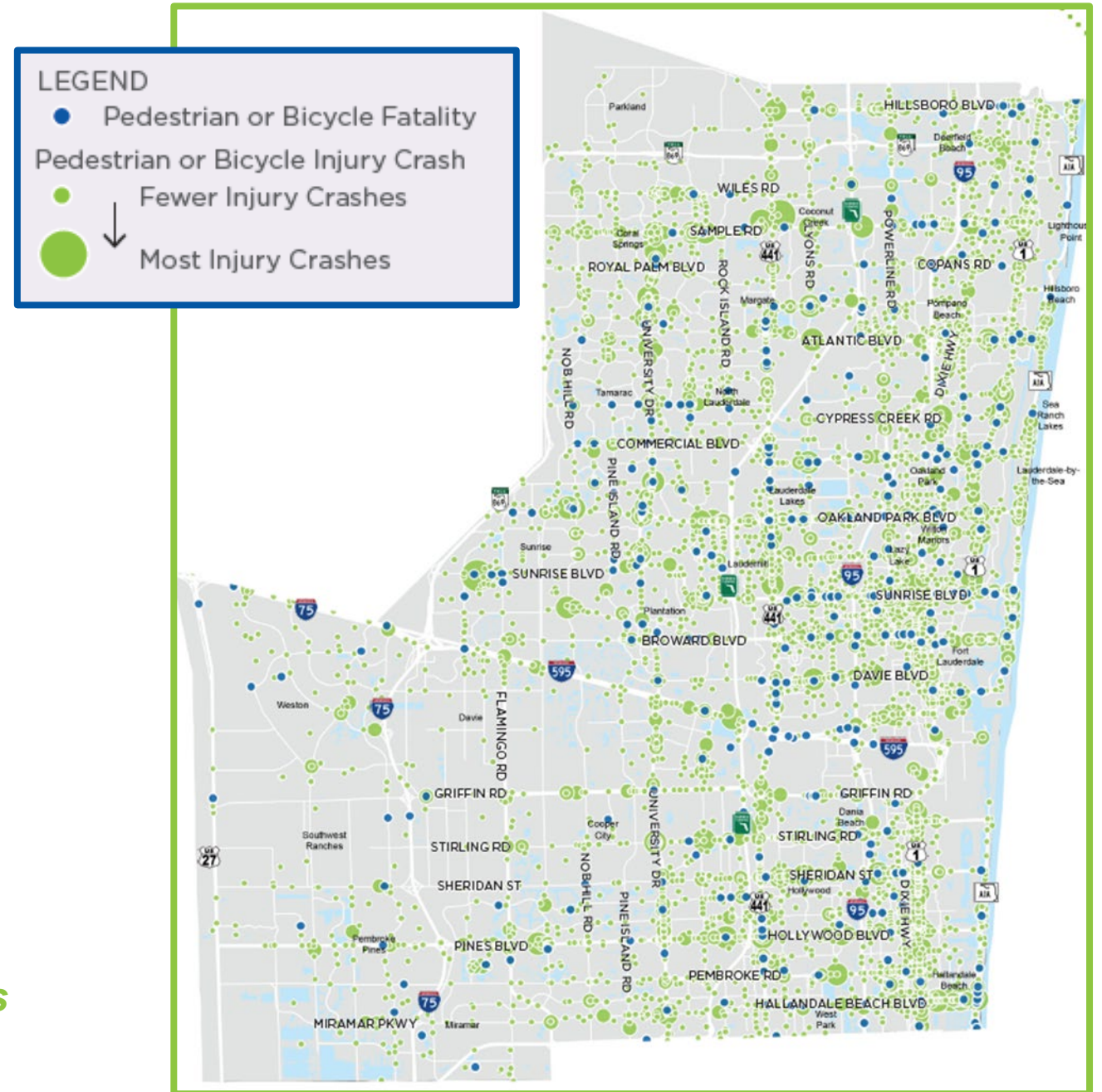
Incident Delay

Assessment Buffer: 200 ft

Project Evaluation: Based on their proximity to identified high density crash / incident corridors.

Support of Ordinance: Alleviate Congestion & Enhance Connectivity

*Source: Signal Four Crash Data for all modes
(University of Florida)*



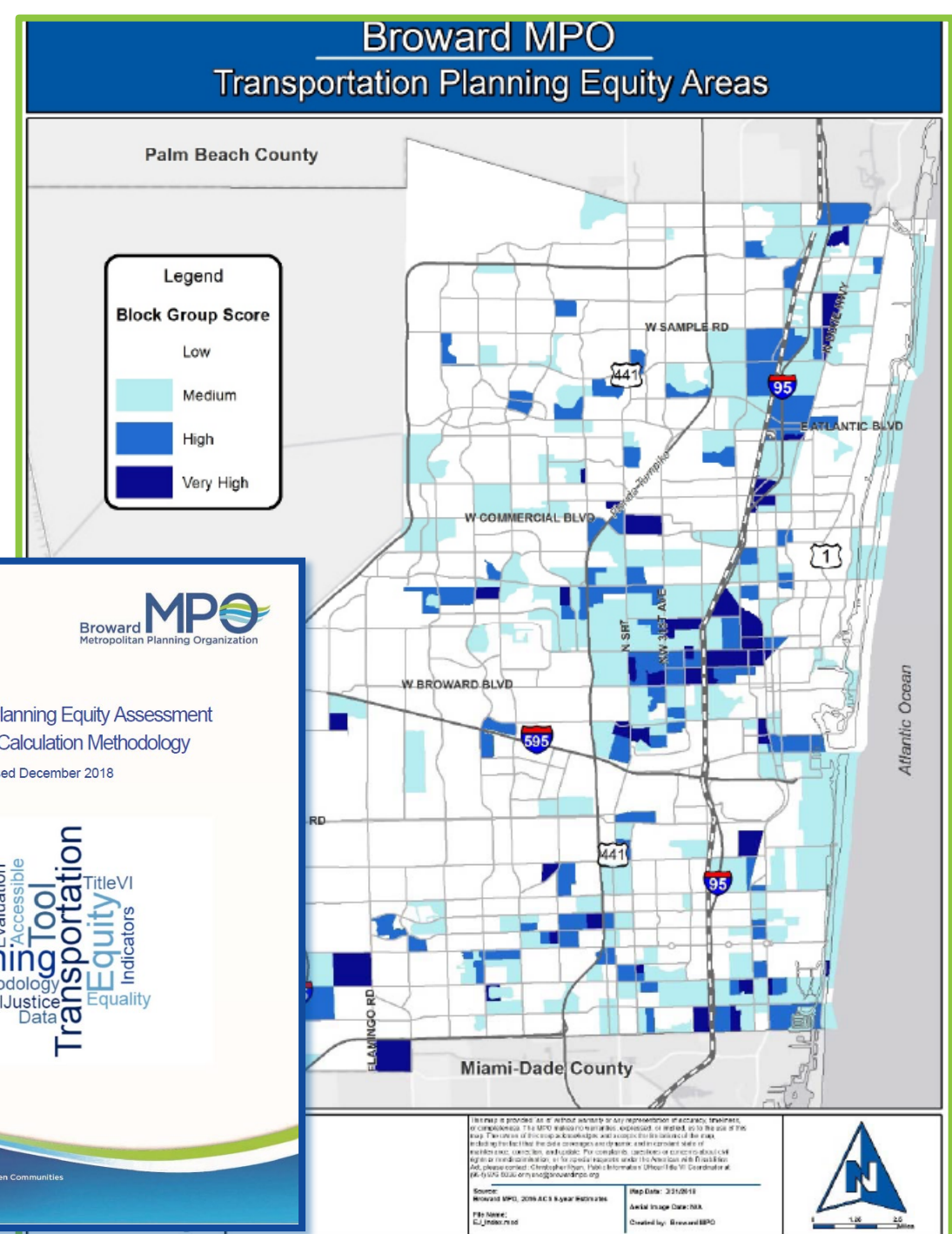
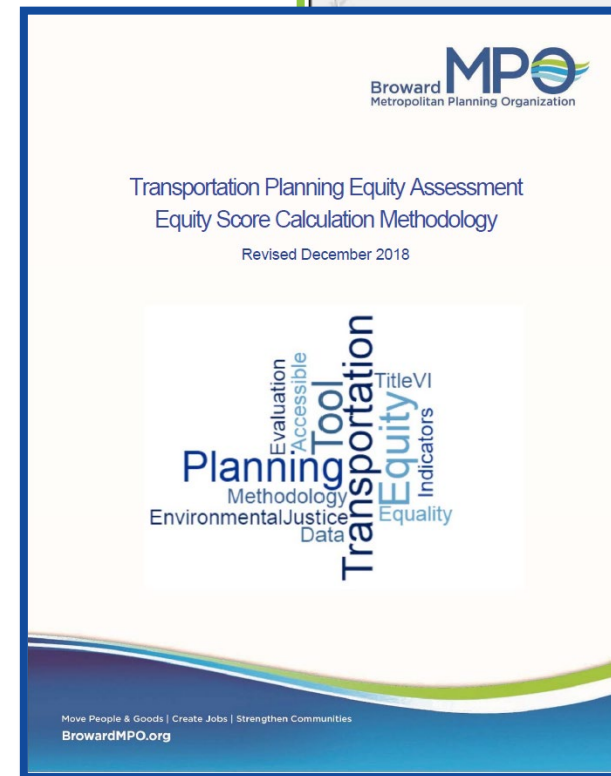
Equity

Assessment Buffer: ¼ mile

Project Evaluation: Based on the average equity indicator score calculated within a ¼ mile buffer of the proposed project limits.

- Population with a disability
- Racial Minority
- Population below poverty
- Ethnic minority
- Limited English Proficient
- Youth (10-17)
- Older adults (65+)

Source: Broward MPO Transportation Planning Equity Assessment methodology



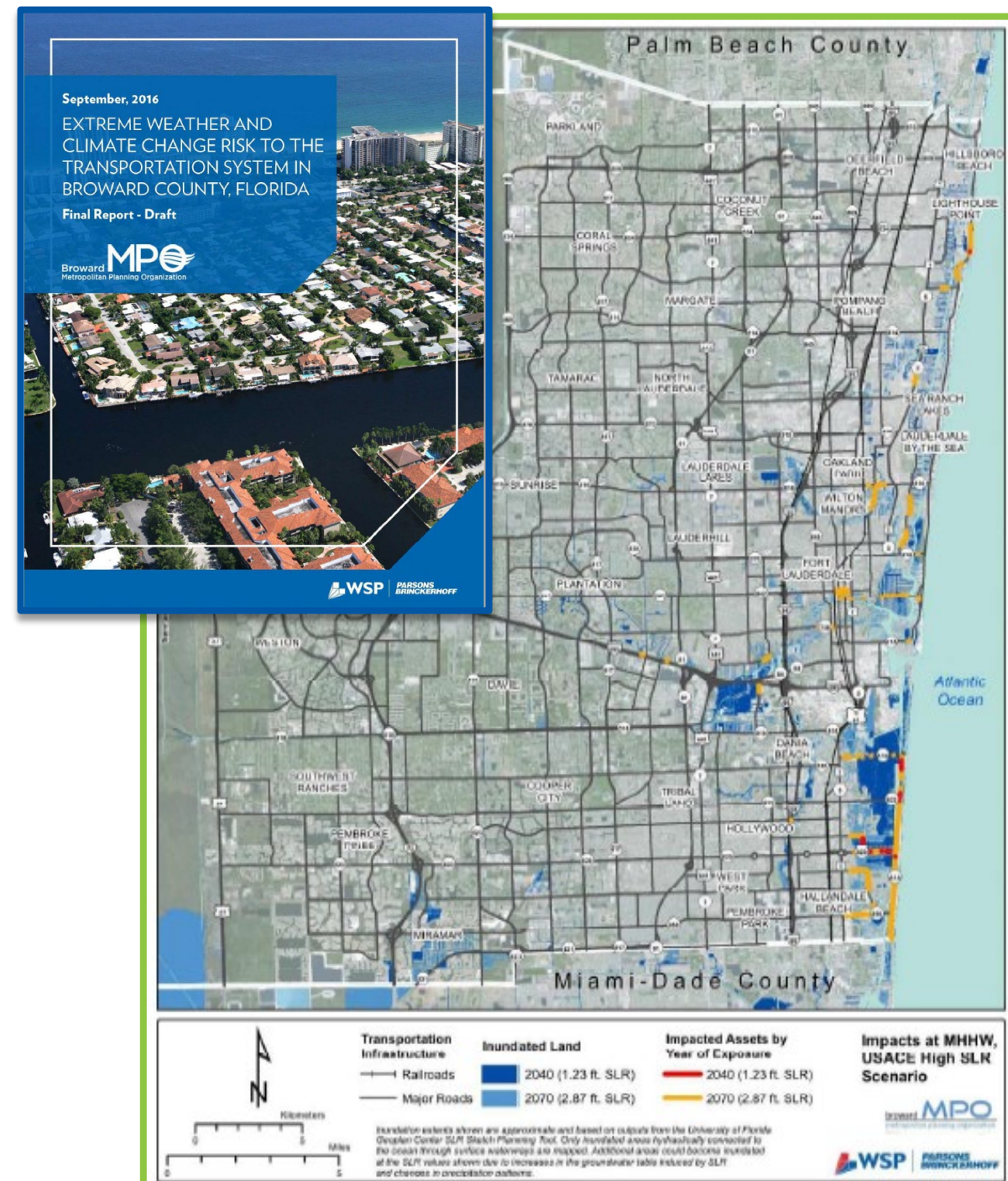
Resiliency

Assessment Buffer: 200 ft

Project Evaluation: How project improves or addresses an identified resiliency issue.

Examples of resiliency projects can include, but is not limited to, addressing sea level rise / flooding issues and the conversion of existing infrastructure to be wind/storm resistant.

Source: Broward MPO – Map files from the “Extreme Weather and Climate Change Risk to the Transportation System in Broward County” study



Project Performance

Projects awarded Surtax funding from previous years will be evaluated on their implementation performance.

All projects within the initial years of programing will be awarded the same score of '0'.

***Source: Broward County Mobility
Advancement Program Administrator***

Project Delivery

Project
Schedule



Budget



CBE Goal



Work Mix

Alleviate Congestion & Enhance Connectivity





Move People & Goods | Create Jobs | Strengthen Communities

Questions?

Andrew Riddle

Manager of Surtax Services

Riddlea@browardmpo.org

(954) 876-0067

Kerrie MacNeil

Surtax Services Project Manager

MacNeilk@browardmpo.org

(954) 876-0072