

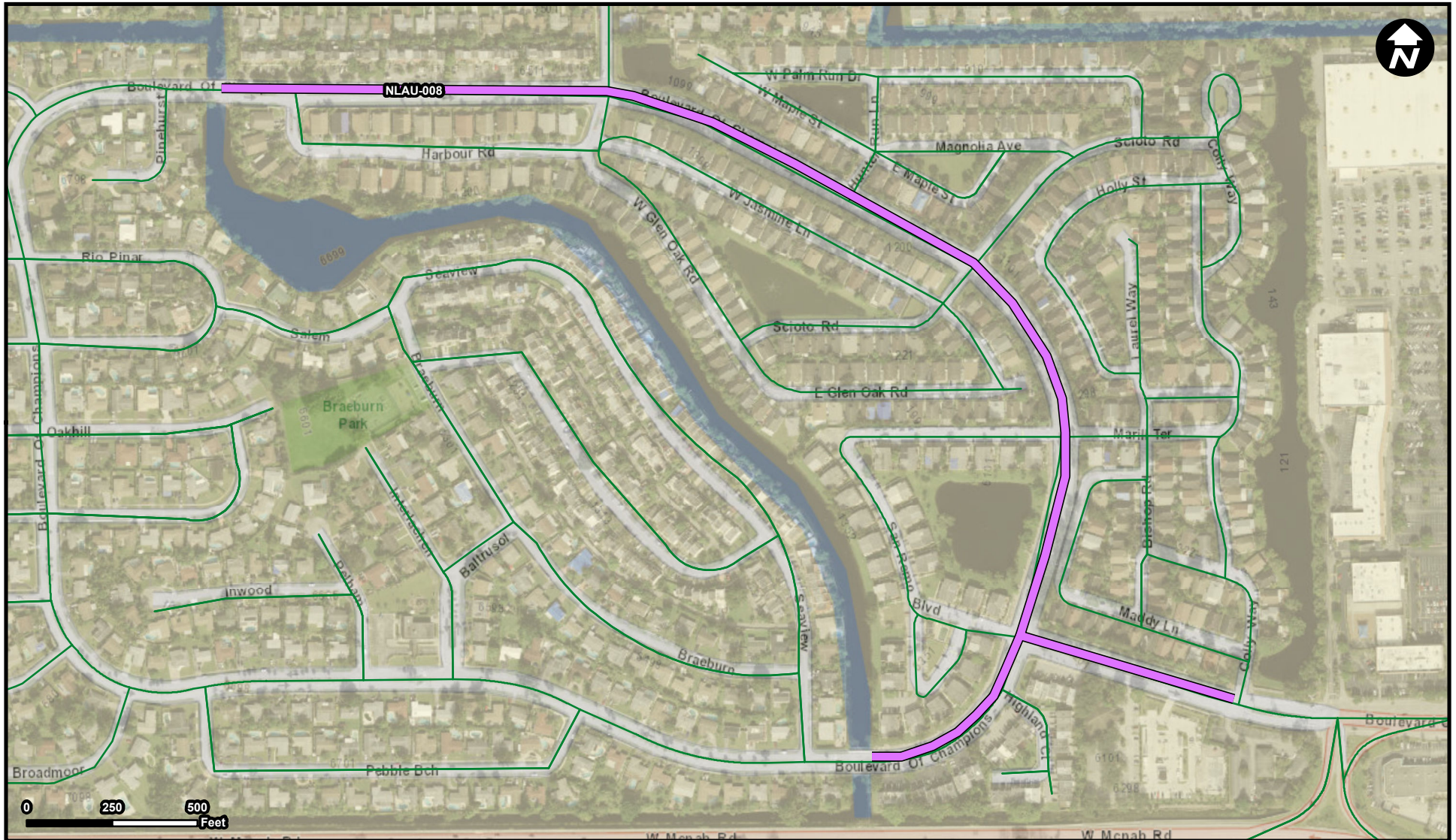
Suggested Work Mix: Traffic Circle, Speed Tables, Intersection Improvement
Primary Work Mix: Safety Project
Secondary Work Mix: Signing/Pavement

FROM:
TO:




Project Description & Project Scope

- Evaluation and construction of neighborhood traffic calming devices such as traffic circles, speed humps, and pedestrian crosswalks.

Includes improvements to three roadways; installation of traffic circles on SW 81st Ave and Kimberly Boulevard, lane reduction on Kimberly Boulevard, installation speed humps, bike lanes, and median enhancements on Tam O'Shanter Boulevard.



Legend

-  NLAU-008
 Municipality
 Unincorporated

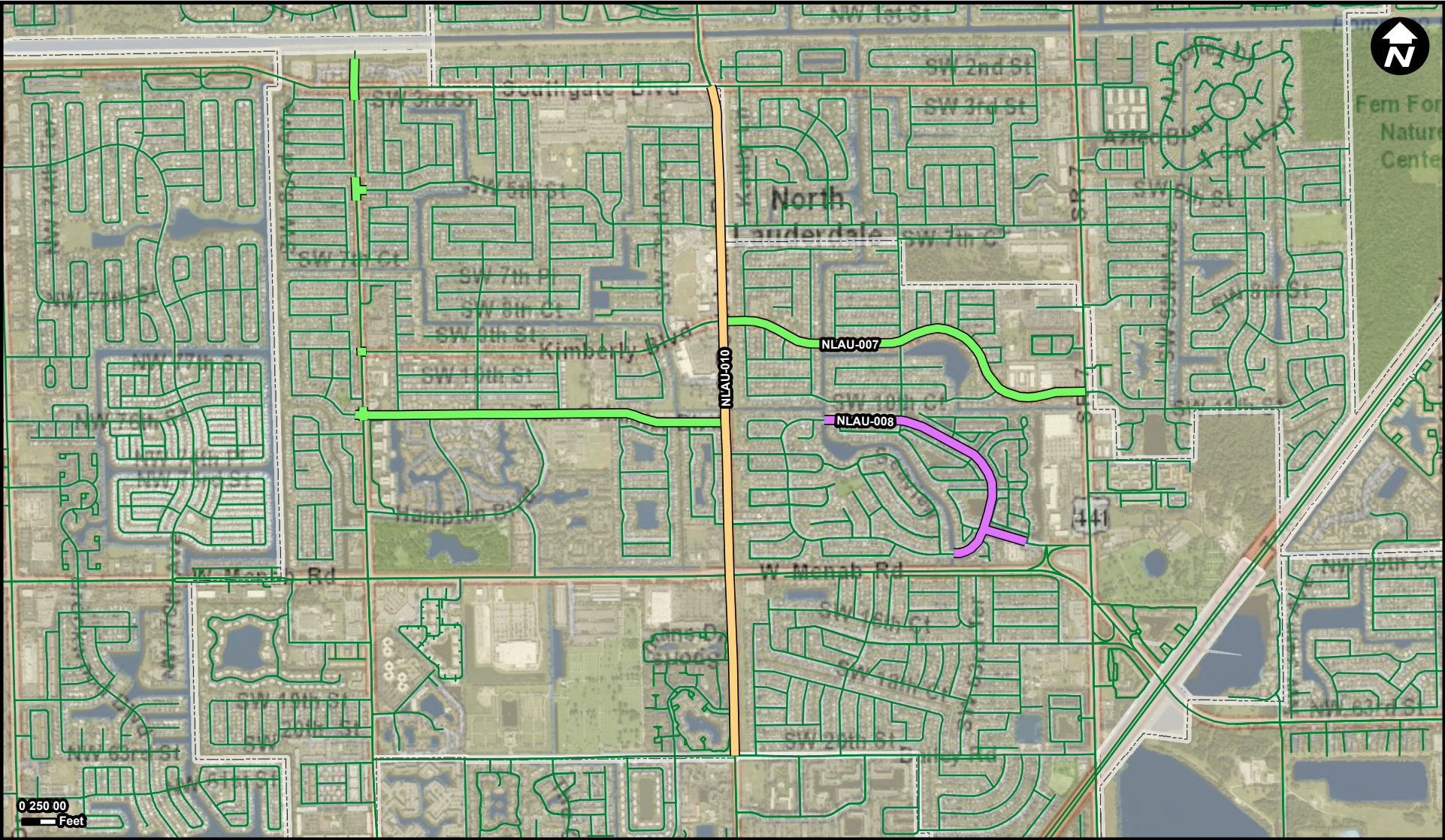
Suggested Work Mix: Bicycle Pedestrian Infrastructure
Primary Work Mix: Safety Project
Secondary Work Mix: Signing/Pavement

FROM: Glen Oak Road
TO: Sw 64th Terrace

Project Description & Project Scope

• Addition of the standard City sound walls along two highly travelled roadways in the City.

Install 6 foot sound wall, replace sidewalks, install safety barrier wall, increase lighting, provide for tree removal and mitigation. Add Raised intersection with crosswalk, pedestrian signal at BOC and BOC to improve traffic circulation and pedestrian



Legend

- NLAU-007
- NLAU-008
- NLAU-010
- Municipality
- Unincorporated

Suggested Work Mix: Landscaping, Hardscape, Signage, Lighting

Primary Work Mix: Lighting

Secondary Work Mix: Safety Project

Project Description & Project Scope

Addition of the standard City sound walls along two highly travelled roadways in the City.

Install 40 lights on East side of Rock Island Rd from Bailey to Southgate. Improve crosswalks at Kimberly and Forest

FROM: Bailey Road

TO: Southgate