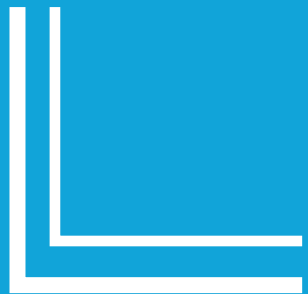




FISCAL YEAR  
**2020**

**MUNICIPAL SURTAX**  
CAPITAL PROJECTS PRIORITIES



**Legend:**

Project Ranking - #1-110 represent MPO Surtax Services recommendations for fiscal year 2020 and consider construction readiness and utilized “rounds” to ensure equity among municipalities. Project #111-510 have not been evaluated for funding readiness and require additional evaluation and analysis. They also include city requested “holds” and “swaps.”

Municipality – requesting / sponsor municipality.

Project Number -a unique project identifier. Projects with numbers that include “.x” reflect multi-part projects.

Project Name - provided by municipality.

Work Mix - primary type of work.

Phase - Municipality identified first phase of work (Planning, Design, Right-of-way, or Construction) required.

Fiscal Year 2020 Recommendation - indicates recommend year and phase of work being recommended. Projects identified as Rank, Swap or Hold have not been reviewed for funding readiness and require additional analysis before being recommended for funding in future fiscal years.

Surtax Plan Estimate - cost estimate provided by municipality to County when originally submitting project for inclusion in the Surtax Financial Plan.

Recommended Phase Funding - dollar amount being recommended for funding based upon the Phase required (see notes on calculations) and latest cost estimates provided by municipalities. This amount does not fully fund projects except in the case of construction phase projects.

**Notes:**

- (1) The Municipal Surtax Capital Projects Priorities (Fiscal Year 2020) was developed by the Broward MPO Surtax Services in partnership with the municipalities in Broward County. All project information was provided by the municipalities.
- (2) All projects were provided by Broward County and were contained in the Surtax Plan approved by the voters in November 2018.
- (3) The Municipal Surtax Capital Projects Priorities (Fiscal Year 2020), consistent with the Surtax Ordinance, the Tri-Party Interlocal Agreement, and Bi-Party Interlocal Agreement, is the output of the data-driven ranking tool utilizing the evaluation criteria, point distribution, and program readiness approach established in coordination with the municipalities.
- (4) Projects with numbers that include “.x” reflect multi-part projects.
- (5) As directed by Broward County, the following percentages are used to calculate the recommended phase funding since the projects in the Surtax Plan are assumed to be the total cost of the required phase(s) to complete the project:
  - Planning: 3% of the total cost of the project in the Surtax Plan.
  - Design: 12% of the total cost of the project in the Surtax Plan.
  - Construction (includes CEI): 85% of the total cost of the project in the Surtax Plan.
  - Right-of-way phase costs are project specific.
- (6) The Broward MPO Surtax Services selected the Cycle 1 (Fiscal Year 2020) funding goal of \$70 - \$80 million of the total \$120 million available (30-Year Surtax Financial Plan) since the County did not provide specific guidance. This goal was selected to allow for adequate funds for Community Shuttle Bus and Rehabilitation and Maintenance projects to be funded by the County.

Project Ranking	Municipality	Project Number	Project Name	Work Mix	Phase	Fiscal Year 2020 Recommendation	Surtax Plan Estimate	Recommended Phase Funding
61	Margate	MARG-002	Winfield Blvd. Improvements	Bicycle Pedestrian Infrastructure	Design	YEAR 1-Design	\$174,000	\$20,880
83	Margate	MARG-047	City Bicycle/Pedestrian Greenway System	Bicycle Pedestrian Infrastructure	Design	YEAR 1-Design	\$1,000,000	\$120,000
107	Margate	MARG-033	Firefighters Pk-Winfield Blvd. Bridge	Bicycle Pedestrian Infrastructure	Design	YEAR 1-Design	\$200,000	\$24,000
334	Margate	MARG-021	Traffic Calming Circle	Traffic Circle, Speed Tables, Intersection Improvement	Design	SWAP	\$500,000	
349	Margate	MARG-022	Traffic Calming Circle	Traffic Circle, Speed Tables, Intersection Improvement	Design	SWAP	\$500,000	
404	Margate	MARG-020	Sidewalk Additions (Various)	Bicycle Pedestrian Infrastructure	NA	SWAP	\$500,000	
423	Margate	MARG-001	Colonial Drive Improvements	Traffic Circle, Speed Tables, Intersection Improvement	NA	SWAP	\$40,000	



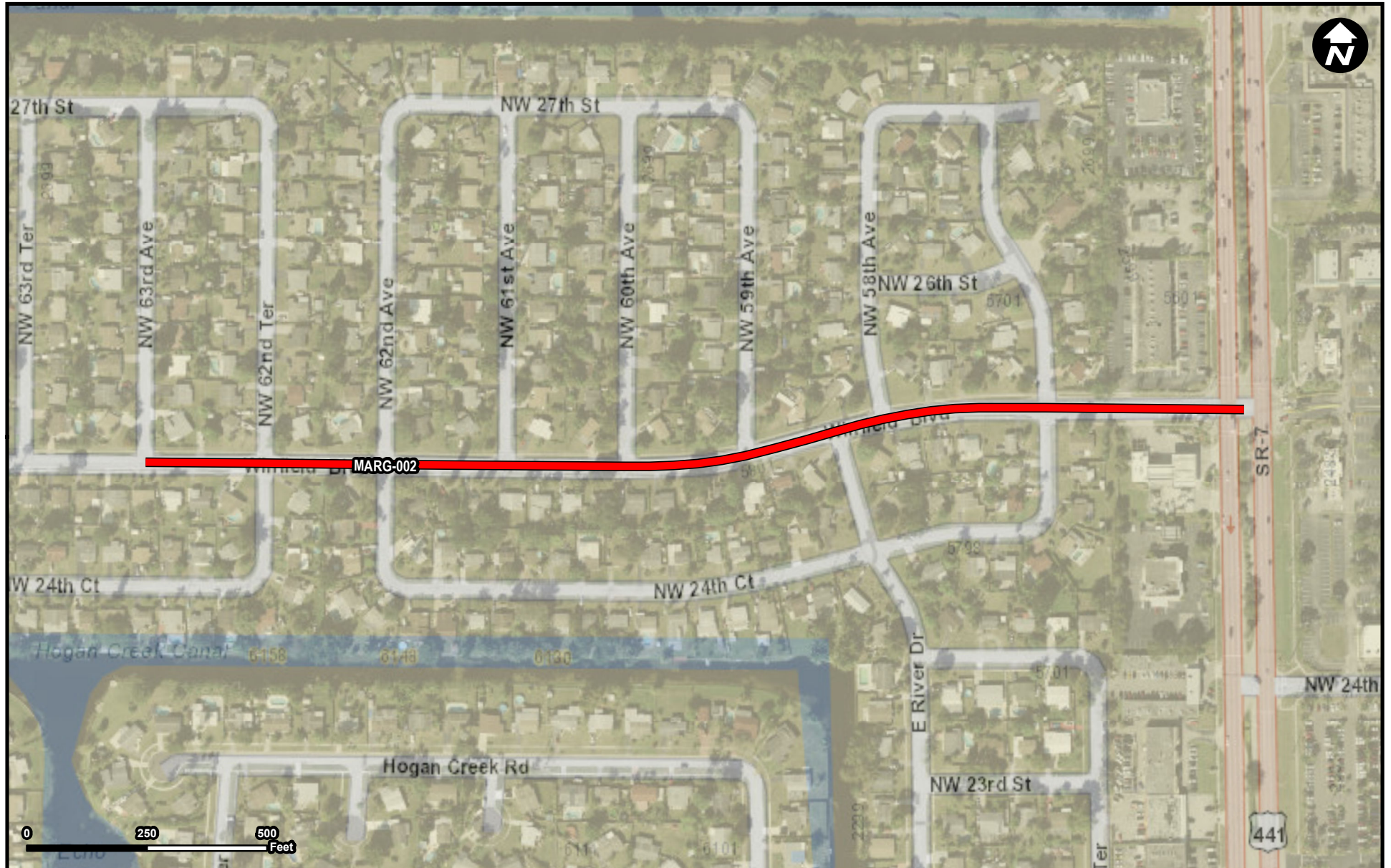
**RANK** Projects requested by municipalities to be ranked for funding.  
**HOLD** Projects requested by municipalities to be put on hold from funding for various reasons.  
**SWAP** Projects requested by municipalities to be swapped out in February 2021.  
**YEAR 1** Projects that are recommended for funding in Fiscal Year 2020.

**Notes:**




- (1) The Municipal Surtax Capital Projects Priorities (Fiscal Year 2020) was developed by the Broward MPO Surtax Services in partnership with the municipalities in Broward County. All project information was provided by the municipalities.
- (2) All projects were provided by Broward County and were contained in the Surtax Plan approved by the voters in November 2018.
- (3) The Municipal Surtax Capital Projects Priorities (Fiscal Year 2020), consistent with the Surtax Ordinance, the Tri-Party Interlocal Agreement, and Bi-Party Interlocal Agreement, is the output of the data-driven ranking tool utilizing the evaluation criteria, point distribution, and program readiness approach established in coordination with the municipalities.
- (4) Projects with numbers that include ".x" reflect multi-part projects.
- (5) As directed by Broward County, the following percentages are used to calculate the recommended phase funding since the projects in the Surtax Plan are assumed to be the total cost of the required phase(s) to complete the project:
  - Planning: 3% of the total cost of the project in the Surtax Plan.
  - Design: 12% of the total cost of the project in the Surtax Plan.
  - Construction (includes CEI): 85% of the total cost of the project in the Surtax Plan.
  - Right-of-way phase costs are project specific.
- (6) The Broward MPO Surtax Services selected the Cycle 1 (Fiscal Year 2020) funding goal of \$70 - \$80 million of the total \$120 million available (30-Year Surtax Financial Plan) since the County did not provide specific guidance. This goal was selected to allow for adequate funds for Community Shuttle Bus and Rehabilitation and Maintenance projects to be funded by the County.

<b>Municipality</b>	<b>Margate</b>
<b>Project ID</b>	<b>MARG-002</b>
<b>Project Name</b>	<b>Winfield Blvd. Improvements</b>
<b>From Location</b>	<b>NW 63rd Ave</b>
<b>To Location</b>	<b>Sate Road 7 (US 441)</b>
<b>Work Mix</b>	<b>Bicycle Pedestrian Infrastructure</b>
<b>Phase</b>	<b>Design</b>
<b>Fiscal Year 2020 Recommendation</b>	<b>YEAR 1 - Design</b>
<b>Recommended Phase Funding</b>	<b>\$20,880</b>
<b>City Submitted Information</b>	
<b>Project Description</b>	Improvements to Winfield Blvd. include sidewalks, crosswalks, and landscaping. Landscaping will be enhanced in the median located at the eastern section of the roadway. In addition, entrance signs and trees will be added as appropriate.
<b>Project Scope</b>	This project aims to create traffic calming and pedestrian improvements as a means to increase pedestrian safety along Winfield Blvd. This project includes additional sidewalks and crosswalks to create connectivity for pedestrians. The project also incorporates intersection and median improvements to calm traffic on this one mile road.
<b>Project Objective</b>	Winfield Blvd is a local street that is connected to SR 7 and is just over one mile in length. Due to the geometry of the road and no traffic calming devices, Winfield Blvd is a prime location for speeding vehicles which is high pedestrian safety risk. The single family homes surrounding Winfield Blvd are primarily school age children who are not eligible for transportation and must walk/ bike to the local schools: Margate Elementary, Margate Middle, and Coral Springs High School.
<b>Estimated Project Cost</b>	\$174,000
<b>Project Type</b>	Complete Streets, Safety
<b>Primary Work Mix</b>	Safety Project
<b>Secondary Work Mix</b>	Intersection
<b>Has design been completed?</b>	Yes
<b>If Design completed, what percent?</b>	90
<b>Is right-of-way required?</b>	
<b>Has right-of-way/utility relocation coordination occurred?</b>	
<b>Point of Contact - First Name</b>	Sierra
<b>Point of Contact - Last Name</b>	Marrero
<b>Point of Contact - Phone</b>	9548843655
<b>Point of Contact - Email</b>	smarrero@margatefl.com

The Municipal Surtax Capital Project Overview was prepared by the Broward MPO in partnership with the municipalities in Broward County. All project information was provided by the municipalities. Projects were provided by Broward County and were contained in the Surtax Plan approved by the voters in November 2018. Project review comments were based on the information provided by the municipalities.



### Legend

-  MARG-002
-  Municipality
-  Unincorporated

**Municipality:** Margate

**FROM:** NW 63rd Ave  
**TO:** Sate Road 7 (US 441)

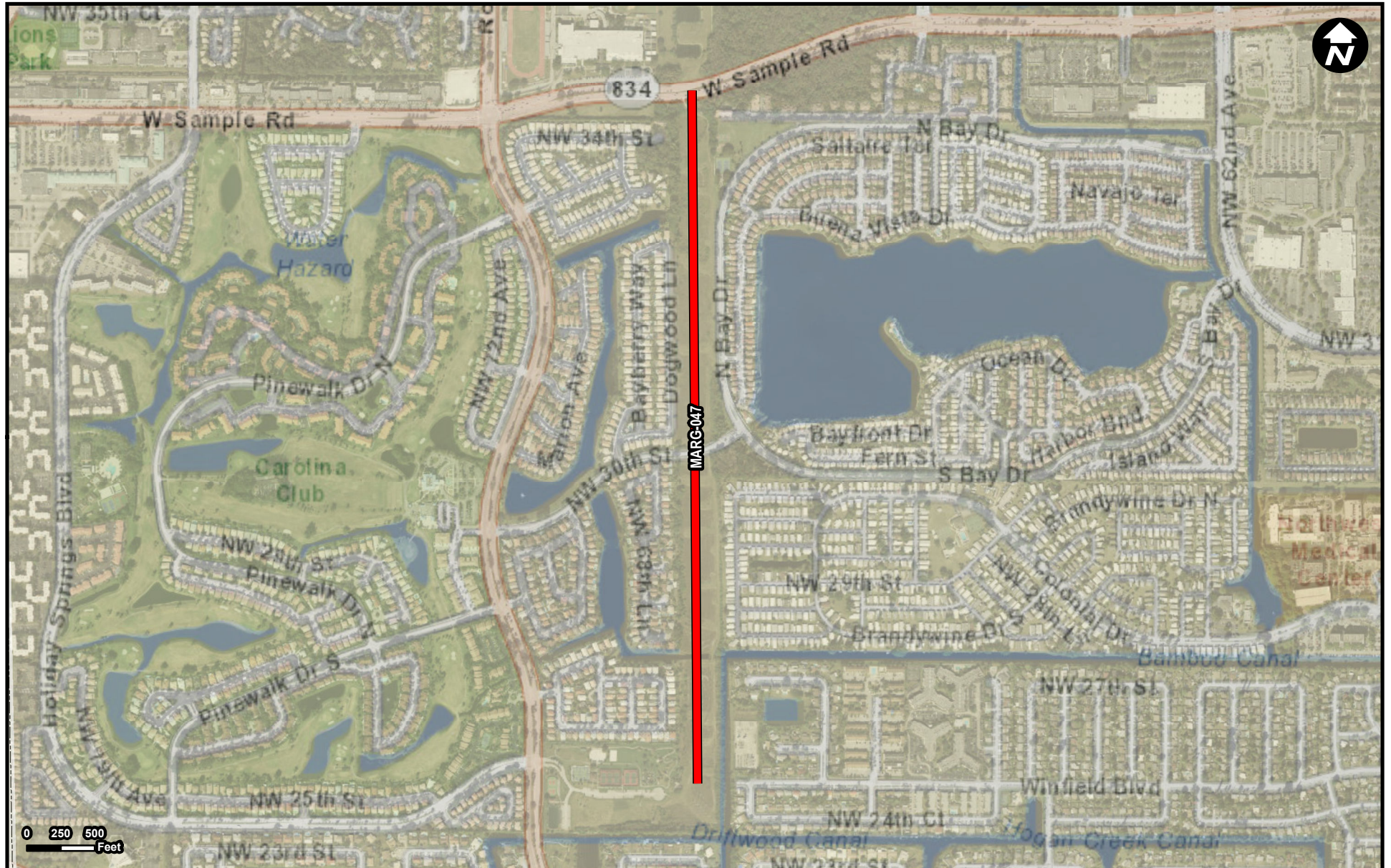
Note: The Municipal Surtax Capital Project Map was prepared by the Broward MPO Surtax Services. The project location information was provided by the municipality.

<b>Municipality</b>	<b>Margate</b>
<b>Project ID</b>	<b>MARG-047</b>
<b>Project Name</b>	<b>City Bicycle/Pedestrian Greenway System</b>
<b>From Location</b>	<b>The eastern most portion of Firefighters Park - 2500 Rock Island Rd, Margate, FL 33063</b>
<b>To Location</b>	<b>Sample Road</b>
<b>Work Mix</b>	<b>Bicycle Pedestrian Infrastructure</b>
<b>Phase</b>	<b>Design</b>
<b>Fiscal Year 2020 Recommendation</b>	<b>YEAR 1 - Design</b>
<b>Recommended Phase Funding</b>	<b>\$120,000</b>
<b>City Submitted Information</b>	
<b>Project Description</b>	Construct bicycle/pedestrian greenways in order to foster safe off-road passageways for bicyclists and pedestrians in the City.
<b>Project Scope</b>	The Greenway project will consist of the construction of a multi-use path to allow pedestrians and bicyclists as safe passage to Sample Road. The length of the project will include bioswales, recycling containers, energy-efficient lighting, solar operated call stations, and benches or exercise stations.
<b>Project Objective</b>	The proposed Greenway will connect the eastern most portion of Fire Fighters Park to Sample Road. This multi-use facility will provide a safe route to school for the children of Margate going to Coral Springs High School, Margate Middle School or Margate Elementary School. This project also encourages a healthy, active community by making biking and walking a safe, easy, and comfortable choice.
<b>Estimated Project Cost</b>	\$1,000,000
<b>Project Type</b>	Greenways
<b>Primary Work Mix</b>	Bike Lane Sidewalk
<b>Secondary Work Mix</b>	Safety Project
<b>Has design been completed?</b>	No
<b>If Design completed, what percent?</b>	
<b>Is right-of-way required?</b>	No
<b>Has right-of-way/utility relocation coordination occurred?</b>	
<b>Point of Contact - First Name</b>	Sierra
<b>Point of Contact - Last Name</b>	Marrero
<b>Point of Contact - Phone</b>	9548843655
<b>Point of Contact - Email</b>	smarrero@margatefl.com




The Municipal Surtax Capital Project Overview was prepared by the Broward MPO in partnership with the municipalities in Broward County. All project information was provided by the municipalities. Projects were provided by Broward County and were contained in the Surtax Plan approved by the voters in November 2018. Project review comments were based on the information provided by the municipalities.

# MARG-047

Project Name  
City Bicycle/Pedestrian Greenway System



## Legend

-  MARG-047
-  Municipality
-  Unincorporated

Municipality: Margate

**FROM:** The eastern most portion of Firefighters Park - 2500 Rock Island Rd, Margate, FL 33063

**TO:** Sample Road

Note: The Municipal Surtax Capital Project Map was prepared by the Broward MPO Surtax Services. The project location information was provided by the municipality.




<b>Municipality</b>	<b>Margate</b>
<b>Project ID</b>	<b>MARG-033</b>
<b>Project Name</b>	<b>Firefighters Pk-Winfield Blvd. Bridge</b>
<b>From Location</b>	<b>Eastern most portion of Firefighters Park -2500 Rock Island Rd, Margate, FL 33063</b>
<b>To Location</b>	<b>Just east of the One Mile Canal connecting to Winfield Blvd.</b>
<b>Work Mix</b>	<b>Bicycle Pedestrian Infrastructure</b>
<b>Phase</b>	<b>Design</b>
<b>Fiscal Year 2020 Recommendation</b>	<b>YEAR 1 - Design</b>
<b>Recommended Phase Funding</b>	<b>\$24,000</b>
<b>City Submitted Information</b>	
<b>Project Description</b>	Construct a pedestrian bridge connecting the homes on and around Winfield Blvd. to Firefighters Park.
<b>Project Scope</b>	The pedestrian bridge will connect from Winfield Blvd to the eastern most portion of Fire Fighters Park. Firefighters Park is adjacent to an FPL easement which runs the entire length of Rock Island Road to Sample Road thus creating a safe route to school for children who must currently use SR7. Coral Springs High School is on the North East Corner of Sample Road and Rock Island Road.
<b>Project Objective</b>	The boundaries for Coral Springs High school incorporates a large percentage of Margate children who are not eligible for transportation due to the school's proximity. Based on the current configuration of the pedestrian travel ways, the only route to school for the children on the east side of the One Mile Canal is SR 7. SR 7 is a critical area of concern due to frequent pedestrian fatalities. The construction of a pedestrian bridge over the One Mile Canal will provide a safe route to school.
<b>Estimated Project Cost</b>	\$200,000
<b>Project Type</b>	Connectivity
<b>Primary Work Mix</b>	Bridge
<b>Secondary Work Mix</b>	Safety Project
<b>Has design been completed?</b>	No
<b>If Design completed, what percent?</b>	
<b>Is right-of-way required?</b>	No
<b>Has right-of-way/utility relocation coordination occurred?</b>	
<b>Point of Contact - First Name</b>	Sierra
<b>Point of Contact - Last Name</b>	Marrero
<b>Point of Contact - Phone</b>	9548843655
<b>Point of Contact - Email</b>	smarrero@margatefl.com

The Municipal Surtax Capital Project Overview was prepared by the Broward MPO in partnership with the municipalities in Broward County. All project information was provided by the municipalities. Projects were provided by Broward County and were contained in the Surtax Plan approved by the voters in November 2018. Project review comments were based on the information provided by the municipalities.





### Legend

-  MARG-033
-  Municipality
-  Unincorporated

**Municipality:** Margate

**FROM:** Eastern most portion of Firefighters Park -2500 Rock Island Rd, Margate, FL 33063  
**TO:** Just east of the One Mile Canal connecting to Winfield Blvd.

Note: The Municipal Surtax Capital Project Map was prepared by the Broward MPO Surtax Services. The project location information was provided by the municipality.