



MTP Project Prioritization – Part I

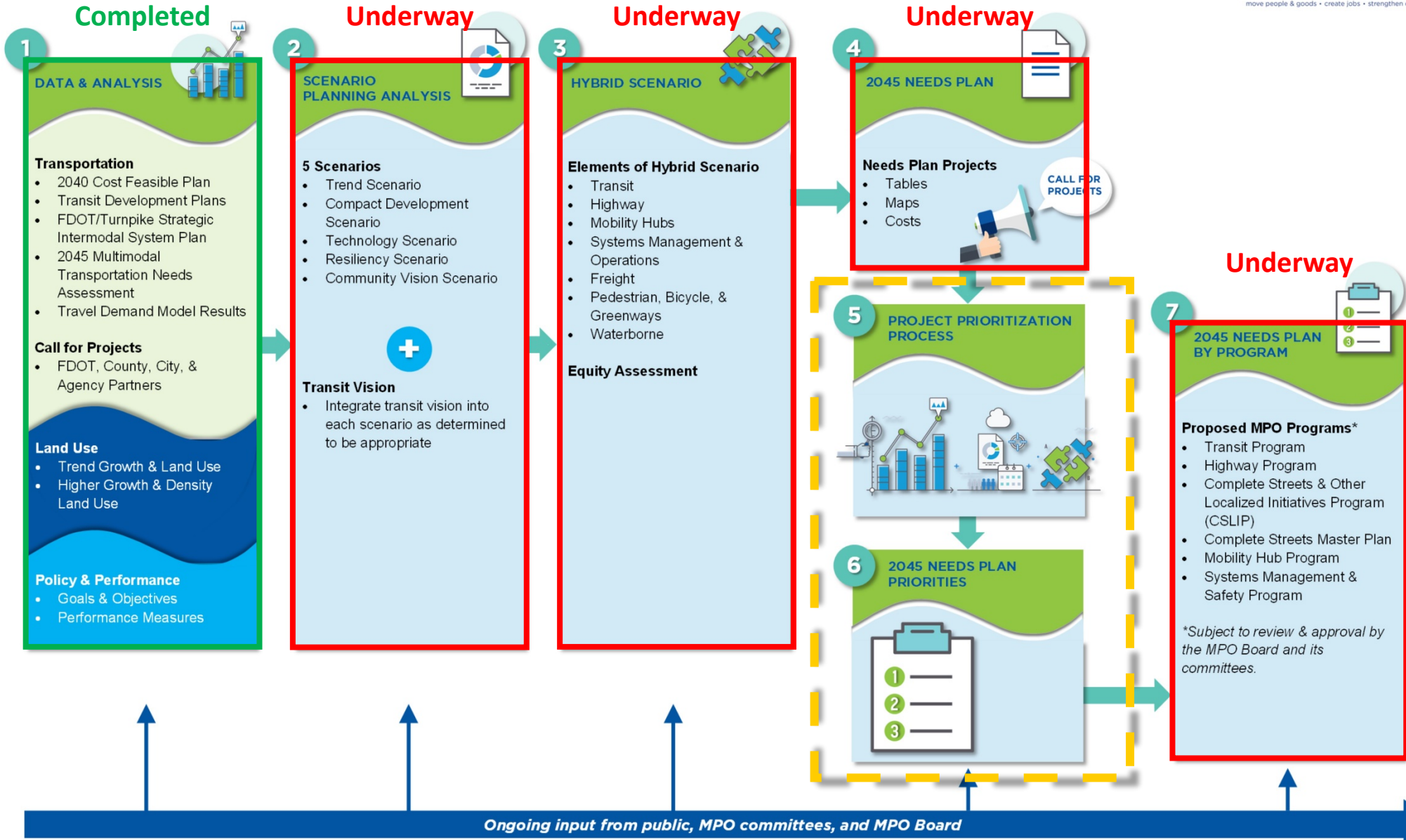
Broward MPO Board

Peter Gies, Strategic Planning Manager

October 11, 2018

DRAFT

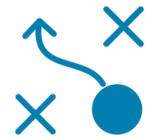
Broward MPO Commitment 2045 Metropolitan Transportation Plan Needs Assessment Process



PROJECT PRIORITIZATION: OBJECTIVES



Provide decision makers with the best information available



Align system-level planning goals, performance measures, corridor needs, and project impacts

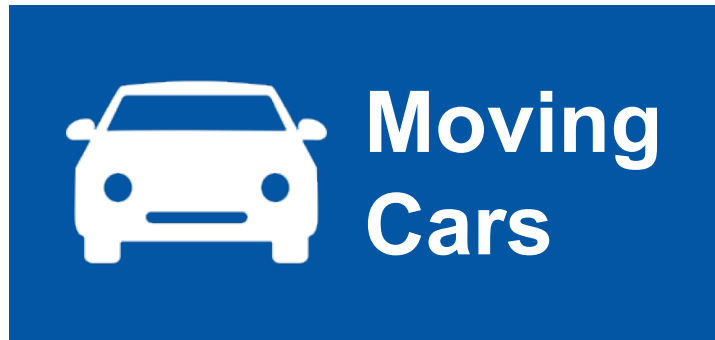


Adapt to changing demographics, policies, and budgetary constraints



Guide investment through a “mode-neutral” assessment process

MODE-NEUTRAL PARADIGM SHIFT



PROJECT PRIORITIZATION: OVERVIEW

The project prioritization framework is intended to assist the MPO and its partner agencies in determining how well each transportation project (regardless of mode) reflects the planning factors, goals and values of our regional transportation vision.

Structured Decision Making Process

Replicable Evaluation & Assessment

Clear & Comprehensive Criteria

Objective & Quantitative Scoring

Tied to Performance Measurement

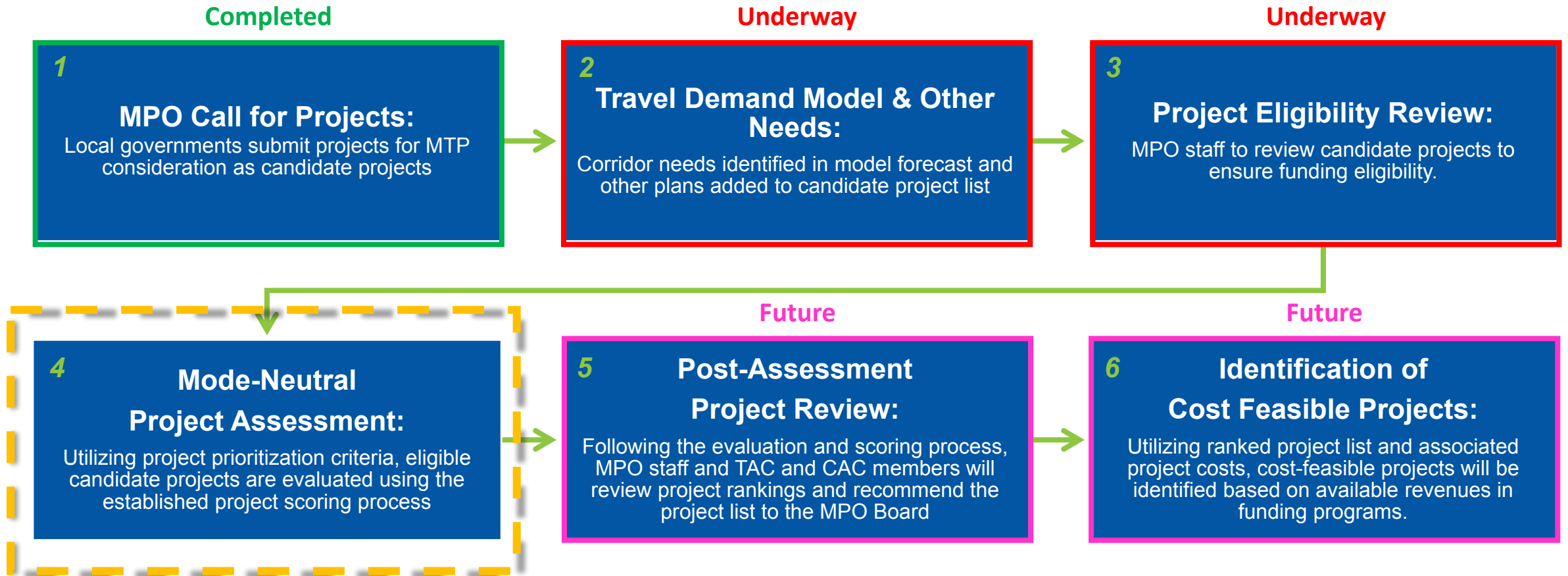
PLANNING & PRIORITIZATION FACTORS

An approach to group and categorize project scoring criteria based on the MTP's broader scenario planning themes, new Federal Planning Factors, and connects adopted MTP Goals & Objectives to Project Investment Decisions.

These include:

- **Mobility** – Providing high speed and reliable travel between places; tend to be longer trips.
- **Accessibility** – Providing access and circulation within higher density, mixed use places; tend to be shorter trips.
- **Safety** – Reducing the number and severity of crashes.
- **Equity** – Ensuring that benefits and impacts are shared among Broward's population.
- **Environmental Stewardship** – Protecting the natural and built environment.
- **Economic Vitality** – Supporting economic activity and businesses.

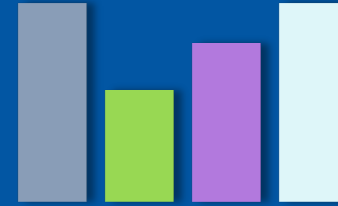
PROJECT PRIORITIZATION: PROCESS



PROJECT PRIORITIZATION: FRAMEWORK

Simple Scoring

Guidelines to be established to ensure replicable scoring process.
Scoring is additive for planning factors



Normalization

Accounts for variance in max. points awarded in each factor category



Weighting

Represents overall preference of factors in relation to one another



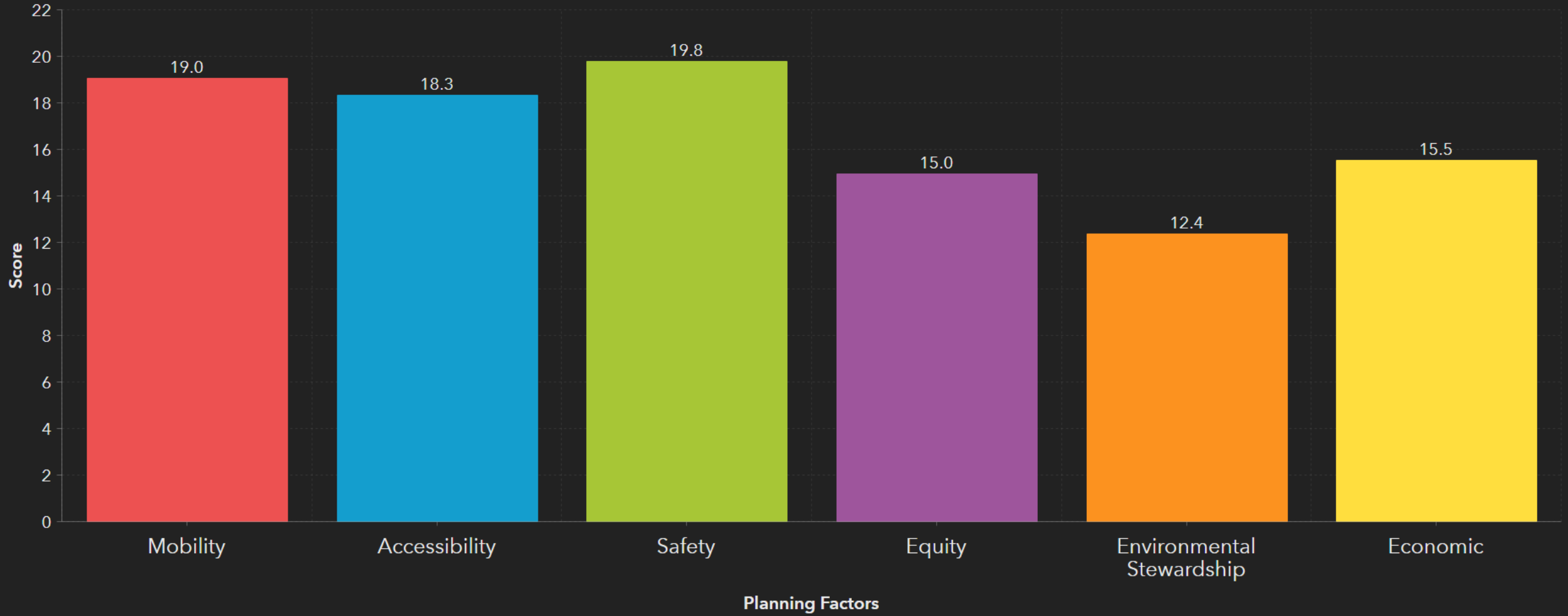
PROJECT PRIORITIZATION: WEIGHTING EXERCISE

***NOTE* THE RESULTS FROM THIS EXERCISE WILL BE USED TO INFORM THE MTP TEAM IN THE DEVELOPMENT OF THE FINAL PLANNING FACTOR WEIGHTING AND WILL BE SHARED WITH THE MPO BOARD**

PROJECT PRIORITIZATION: WEIGHTING

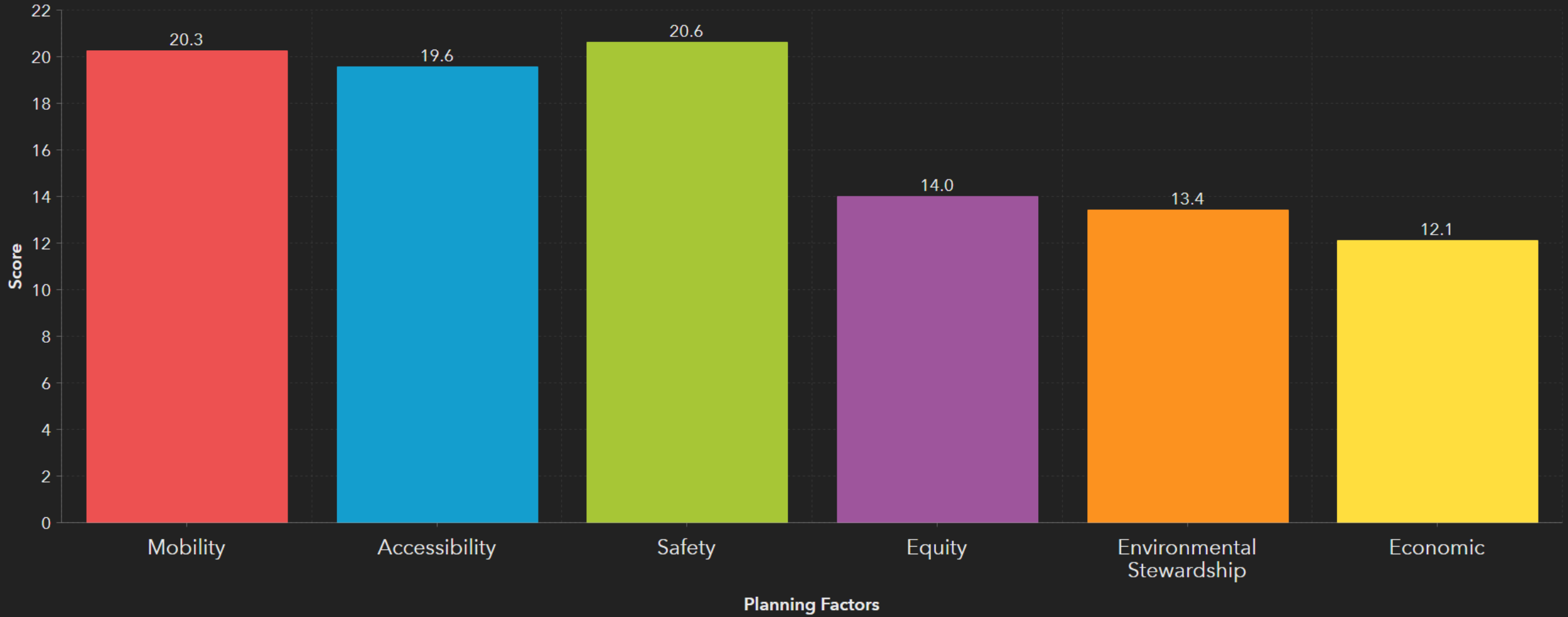
Planning Factors	Weighting
<p><u>Mobility</u> <i>Providing high speed and reliable travel between places; tend to be longer trips.</i></p>	
<p><u>Accessibility</u> <i>Providing access and circulation within higher density, mixed use places; tend to be shorter trips.</i></p>	
<p><u>Safety</u> <i>Reducing the number and severity of crashes.</i></p>	
<p><u>Equity</u> <i>Ensuring that benefits and impacts are shared among Broward's population.</i></p>	
<p><u>Environmental Stewardship</u> <i>Protecting the natural and built environment.</i></p>	
<p><u>Economic Vitality</u> <i>Supporting economic activity and businesses.</i></p>	
Total	100%

Planning Factors by Submission (TAC)



*Values are based on the average score for each factor.

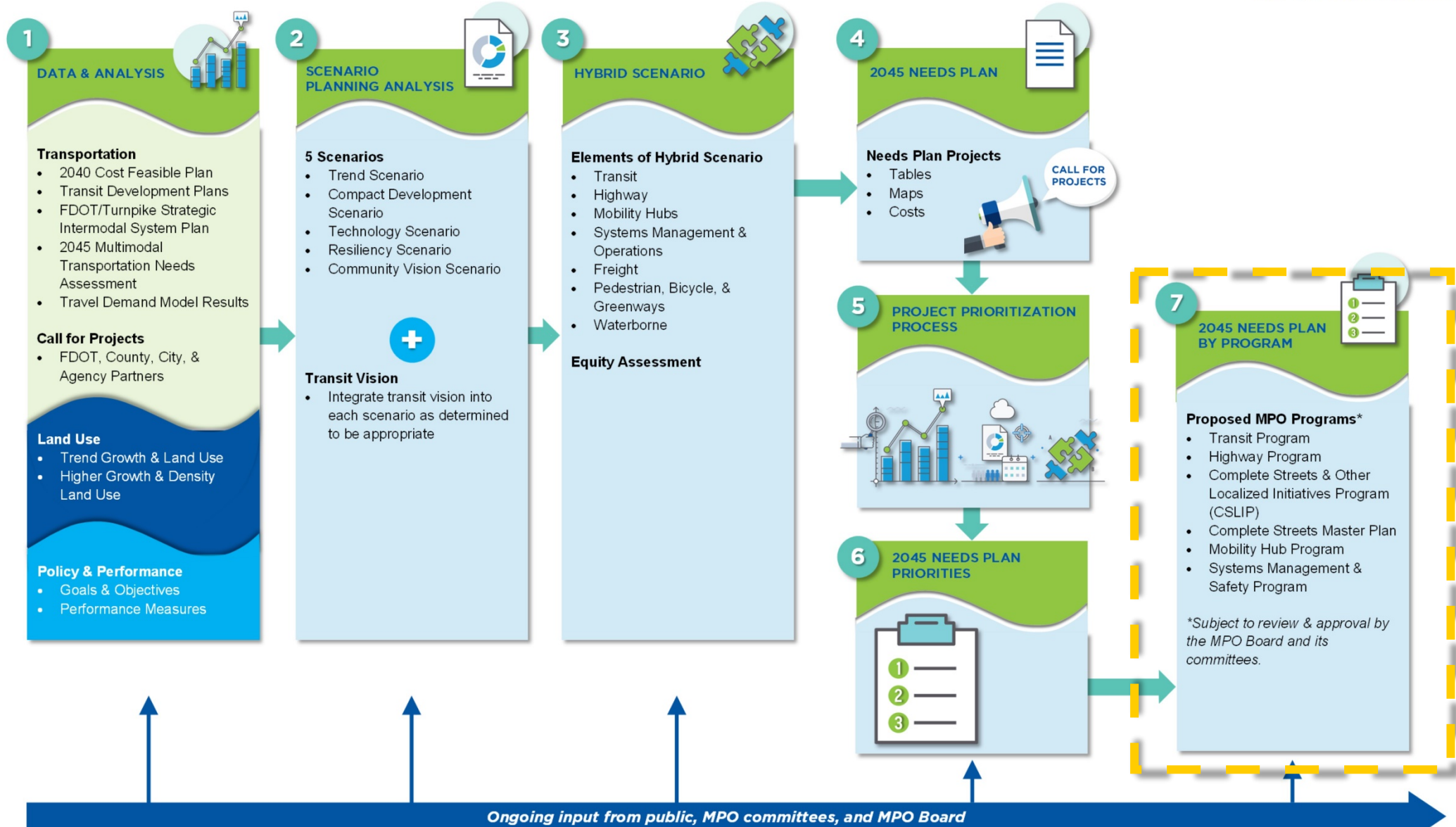
Planning Factors by Submission (CAC)



*Values are based on the average score for each factor.

DRAFT

Broward MPO Commitment 2045 Metropolitan Transportation Plan Needs Assessment Process



NEEDS ASSESSMENT PROCESS: FUNDING PROGRAMS

- 6 Proposed Programs
 - 3 New Programs
 - 3 Existing Programs
- Project Prioritization will only apply to the 3 New Programs
- Funding Allocation Options to be Developed
- MPO Board Consideration of Funding Allocation Options



NEXT STEPS

- Refine process and scoring based on feedback
- Present scoring criteria to TAC/CAC and MPO Board and seek endorsement in October/November 2018
- Project-level data gathering
- Begin initial assessment and scoring process

