



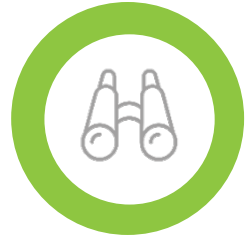
Move People & Goods | Create Jobs | Strengthen Communities

# Municipal Surtax Workshop

## Draft Project Prioritization Criteria

October 23, 2019

# Workshop Agenda



Overview



Draft Criteria



Work Mix



Questions

# Broward MPO's Municipal Surtax Responsibilities

- According to the Interlocal Agreement (ILA) between Broward County and the MPO: the Technical Advisory Committee (TAC), Citizens Advisory Committee (CAC) and the MPO Board are **not** required to take any action on the prioritization efforts by the MPO Surtax Services staff.
- The ILA requires the MPO Surtax Services staff to brief the MPO Board at least twice per year and the TAC/CAC at least four times per year on the **status** of the MPO's work to review, rank, and prioritize municipal projects.

# Broward MPO's Municipal Surtax Role

Review



Rank



Prioritize



# Municipal Project Prioritization Process (MP3)

- Alleviate Congestion
- Enhance Connectivity

**Broward County  
Transportation  
Surtax Ordinance**

- Project Readiness (“Shovel Readiness”)

# Draft Municipal Project Prioritization Criteria

Criteria	Alleviate Congestion	Enhance Connectivity	Interlocal Agreement	Community Emphasis	CSLIP
Employment / Population Density	●	●			●
Roadway Level of Service	●				●
Access / Support to Transit Service	●	●			●
Connection to existing facilities		●			●
Incident Delay	●	●			●
Project Performance			●		●
Equity				●	●
Resiliency				●	

# Draft Municipal Project Prioritization Criteria



**Erin Emmons, GISP**

Kimley-Horn

Surtax Services Consultant to the Broward MPO

# Geographical Approach

**INPUT**



=





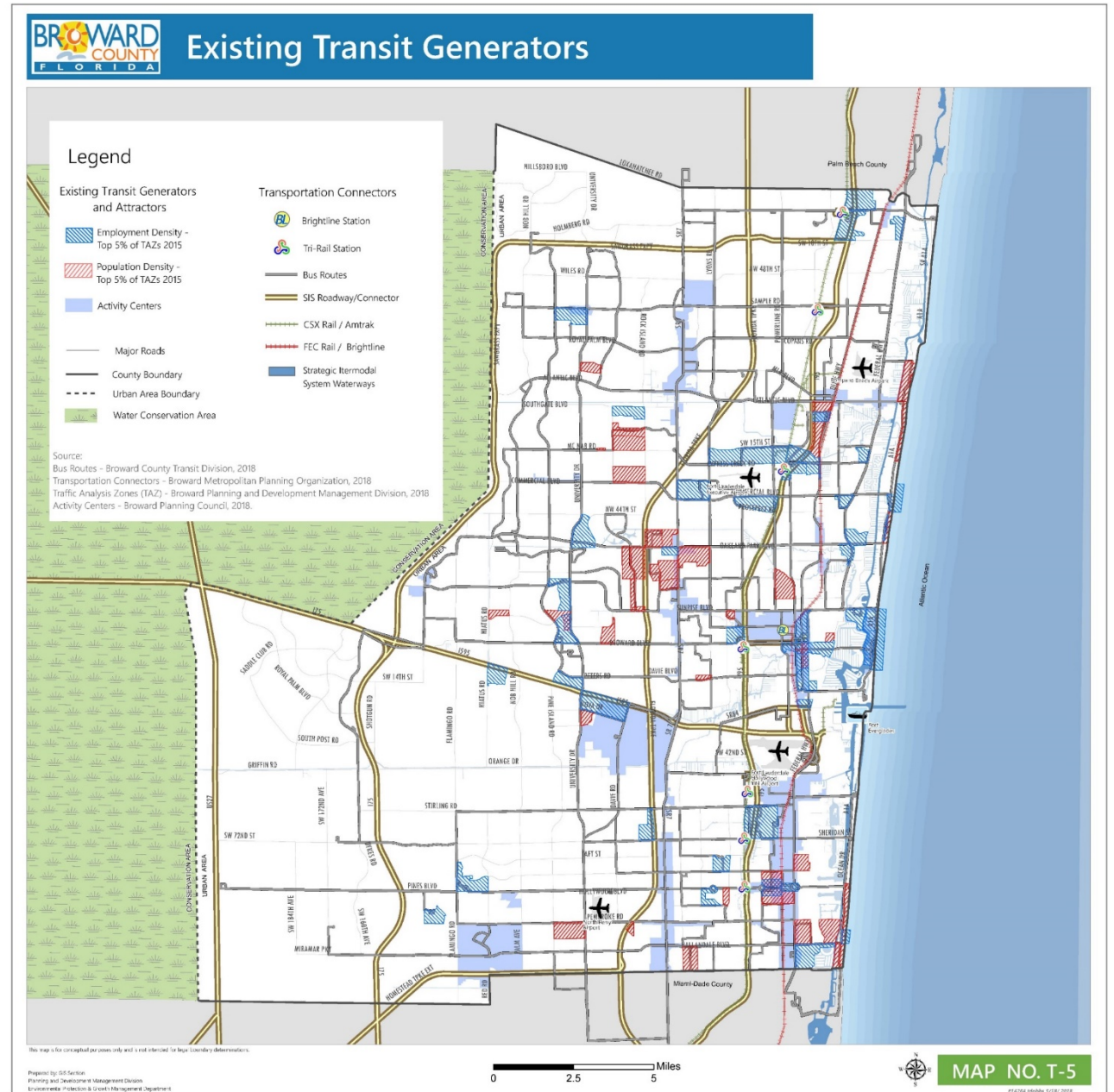
# Employment – Population Density

Assessment Buffer: ¼ mile

Project Evaluation: Connection to or adjacent to one or more Traffic Analysis Zones (TAZs) with the top 5% employment and/or population density areas, identified by Broward County.

Support of Ordinance: Alleviate Congestion & Enhance Connectivity

*Source: Broward County Planning and Development Management Division*



# Roadway Level of Service (LOS)

Assessment Buffer: 200 ft

Project Evaluation: Based on Level of Service (LOS) of connected roadway network.

Support of Ordinance: Alleviate Congestion

**Source: FDOT D4 LOS Assessment Report / FDOT LOS Map Package**



# Access / Support to Transit Service

Assessment Buffer: ¼ mile

Project Evaluation: Access / support to existing transit services and multimodal connections.

Support of Ordinance: Alleviate Congestion & Enhance Connectivity

**Source: Broward County Transit Routes SFRTA / Tri-Rail**



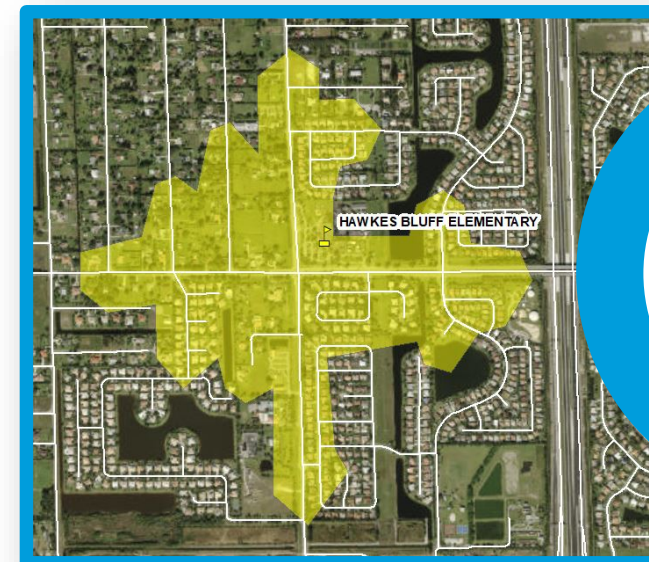
# Connection to Existing Facilities

Assessment Buffer: 200 ft. / \*½ mile

Project Evaluation: Connections to an existing, like or supporting facility / \*Proximity to Public Schools

Support of Ordinance: Enhance Connectivity

*Source: Based on scope and project description and Broward County Public Schools GIS layer*



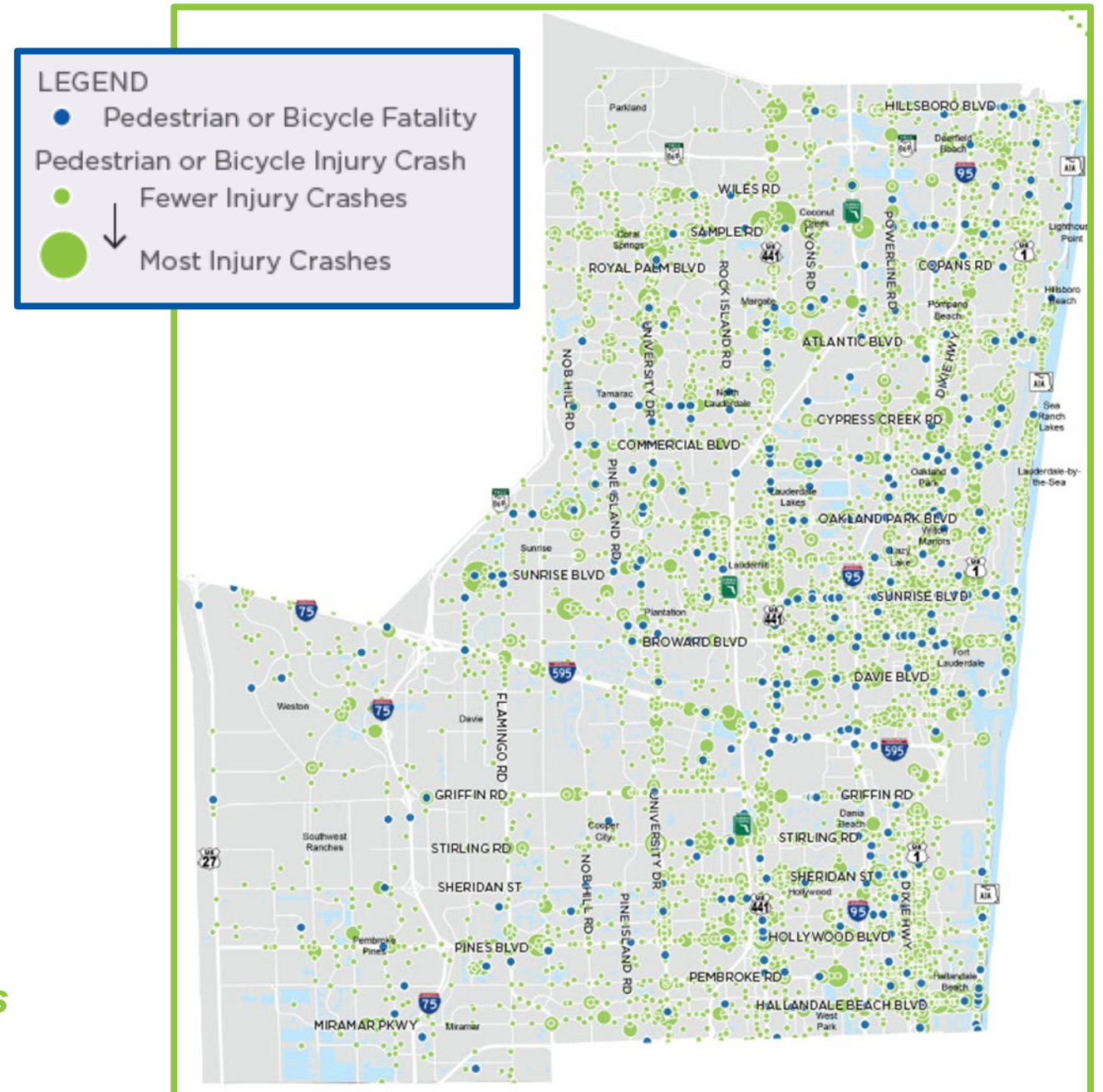
# Incident Delay

Assessment Buffer: 200 ft

Project Evaluation: Based on their proximity to identified high density crash / incident corridors.

Support of Ordinance: Alleviate Congestion & Enhance Connectivity

*Source: Signal Four Crash Data for all modes (University of Florida)*



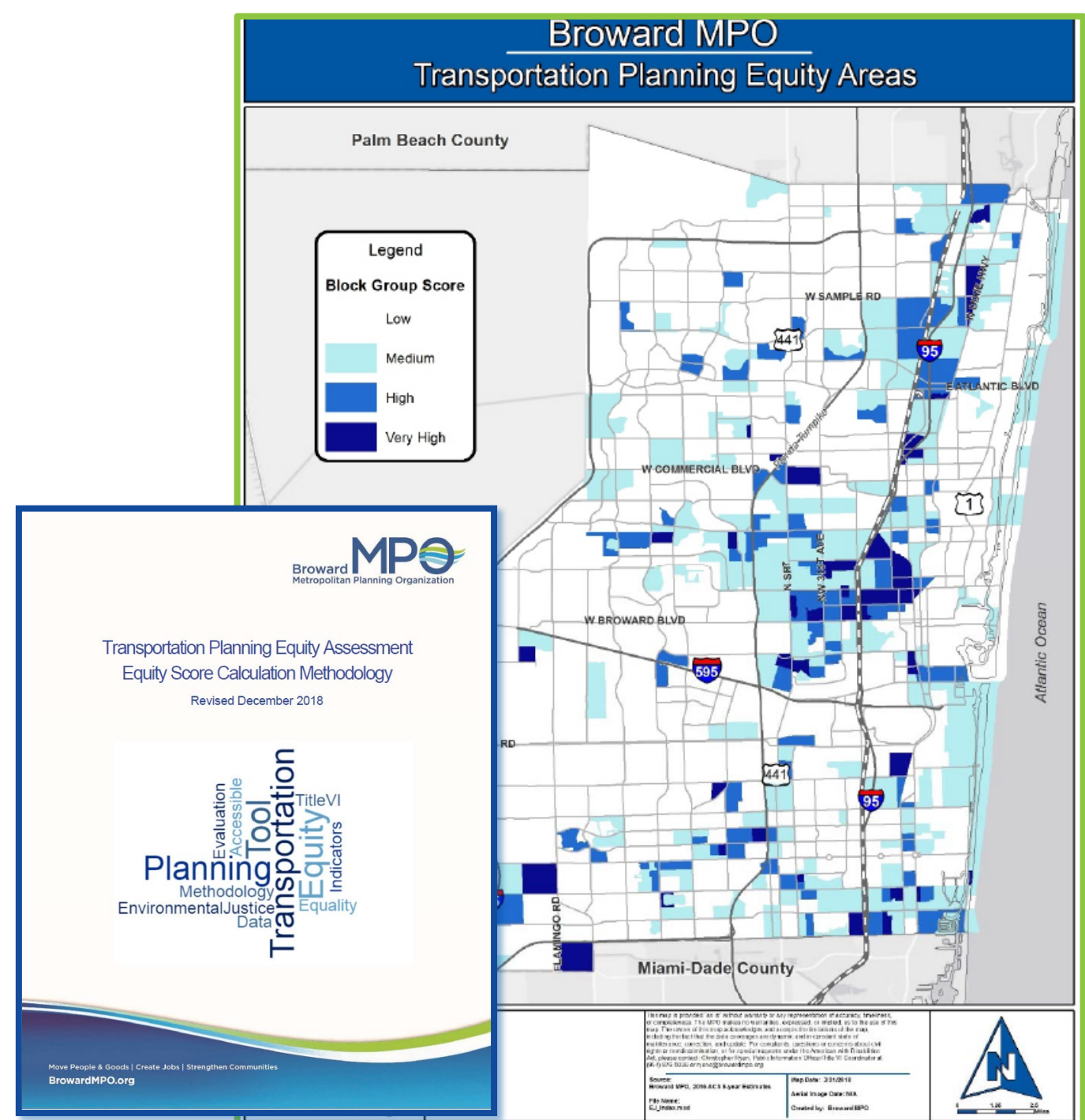
# Equity

Assessment Buffer: ¼ mile

Project Evaluation: Based on the average equity indicator score calculated within a ¼ mile buffer of the proposed project limits.

- Population with a disability
- Racial Minority
- Population below poverty
- Ethnic minority
- Limited English Proficient
- Youth (10-17)
- Older adults (65+)

**Source: Broward MPO Transportation Planning Equity Assessment methodology**



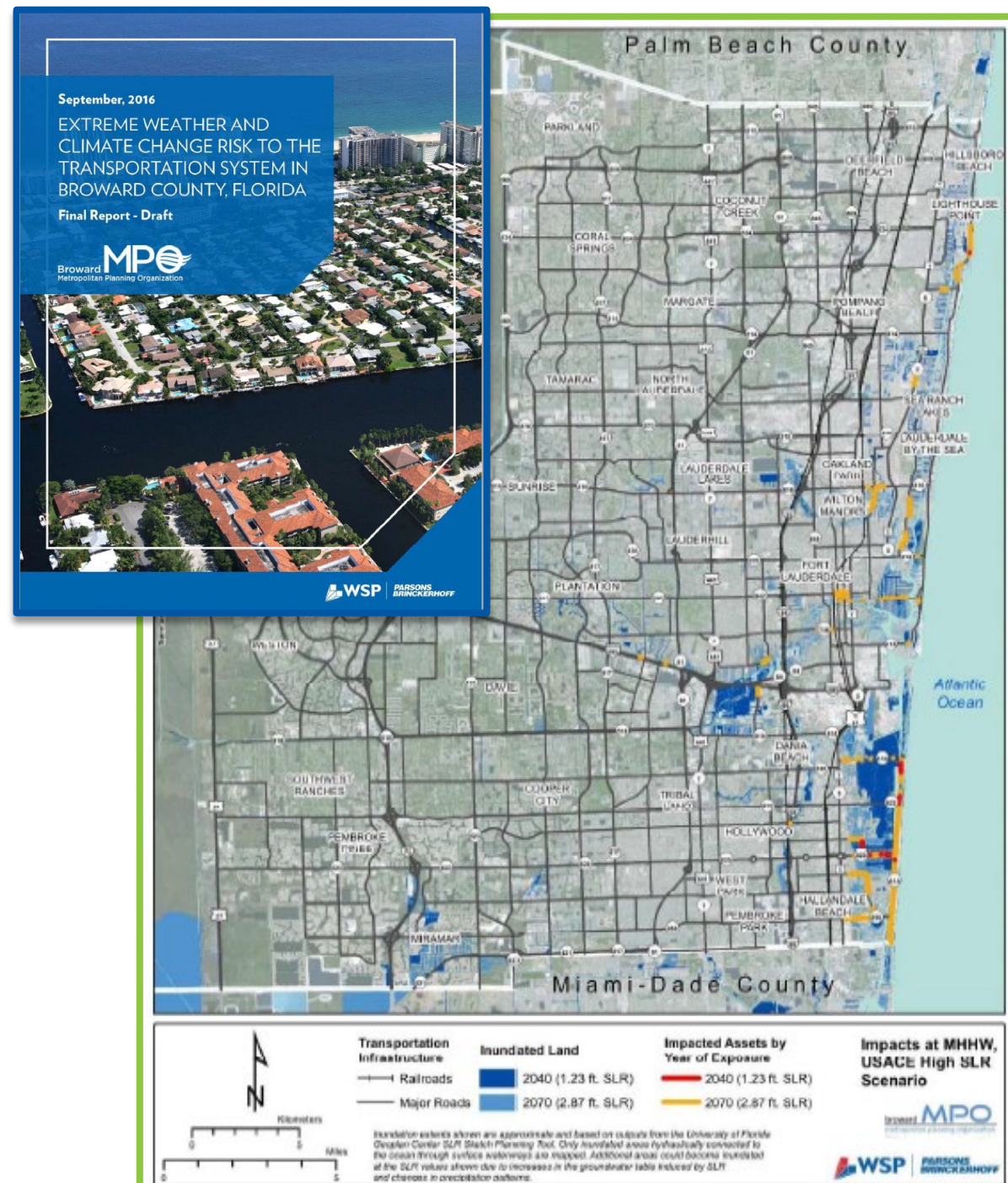
# Resiliency

Assessment Buffer: 200 ft

Project Evaluation: How project improves or addresses an identified resiliency issue.

Examples of resiliency projects can include, but is not limited to, addressing sea level rise / flooding issues and the conversion of existing infrastructure to be wind/storm resistant.

*Source: Broward MPO – Map files from the “Extreme Weather and Climate Change Risk to the Transportation System in Broward County” study*



# Project Performance

Projects awarded Surtax funding from previous years will be evaluated on their implementation performance.

*All projects within the initial years of programing will be awarded the same score of '0'.*

## Project Delivery

Project Schedule



Budget



CBE Goal



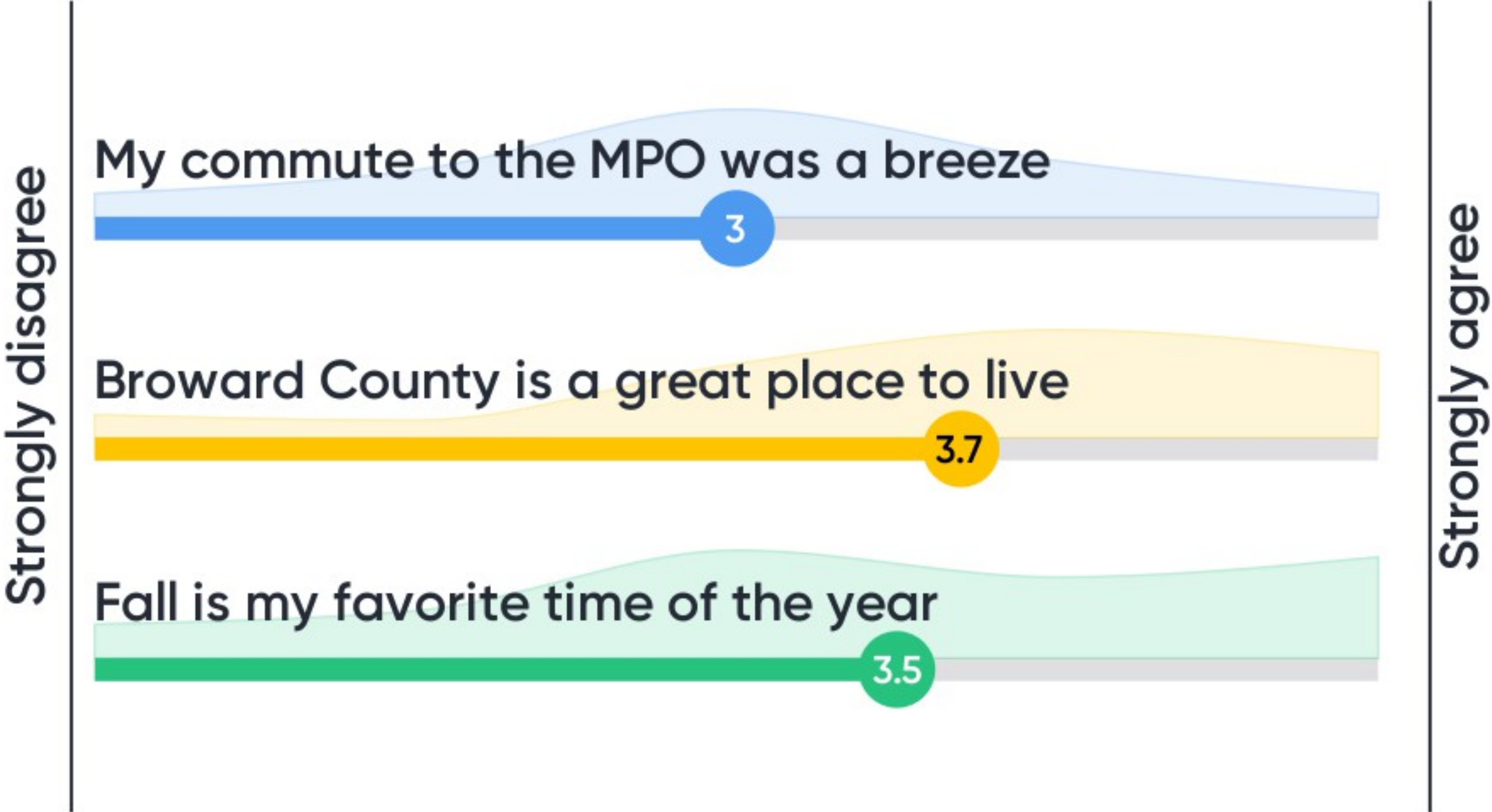


# Work Mix

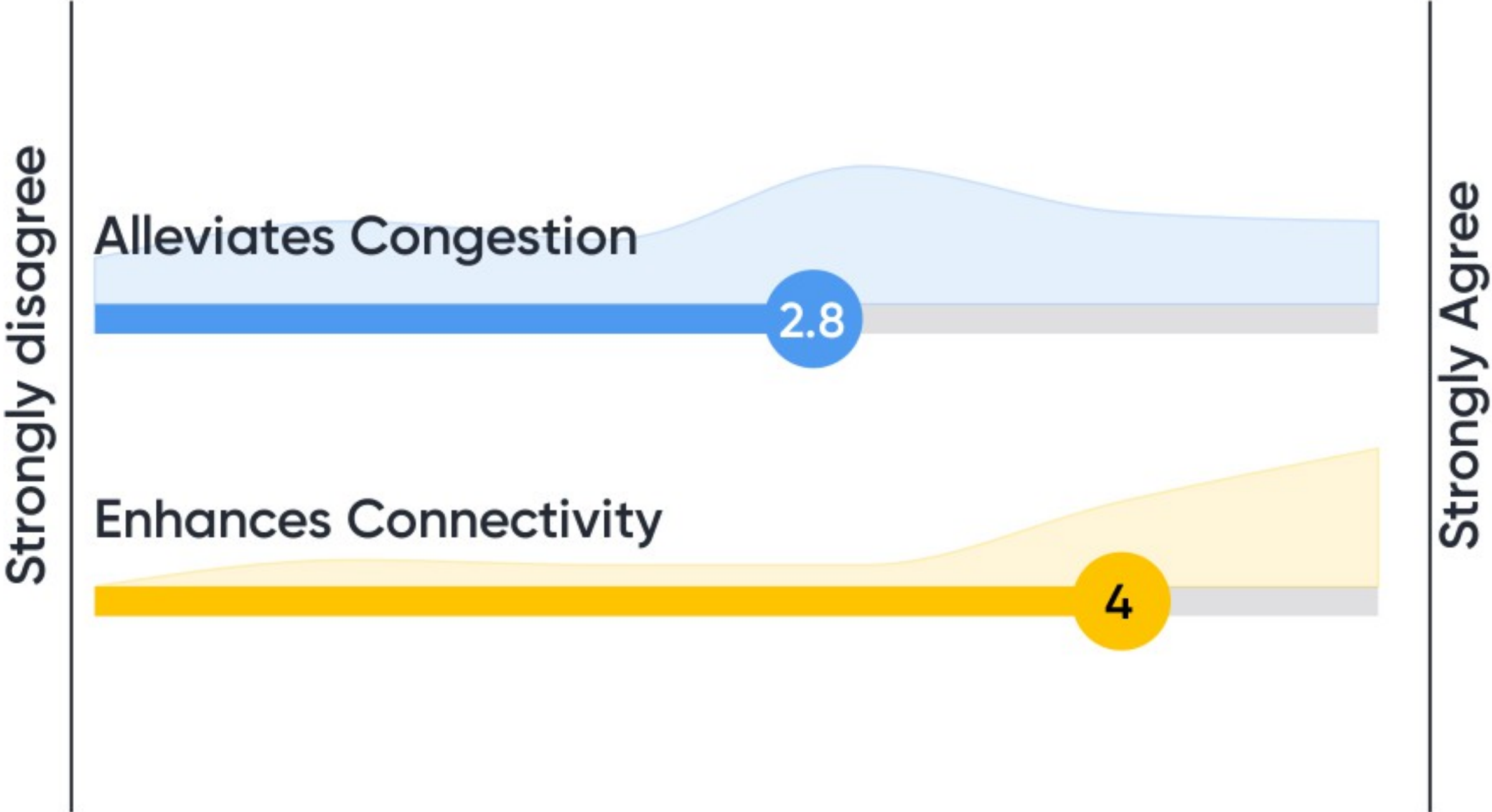
## Alleviate Congestion & Enhance Connectivity



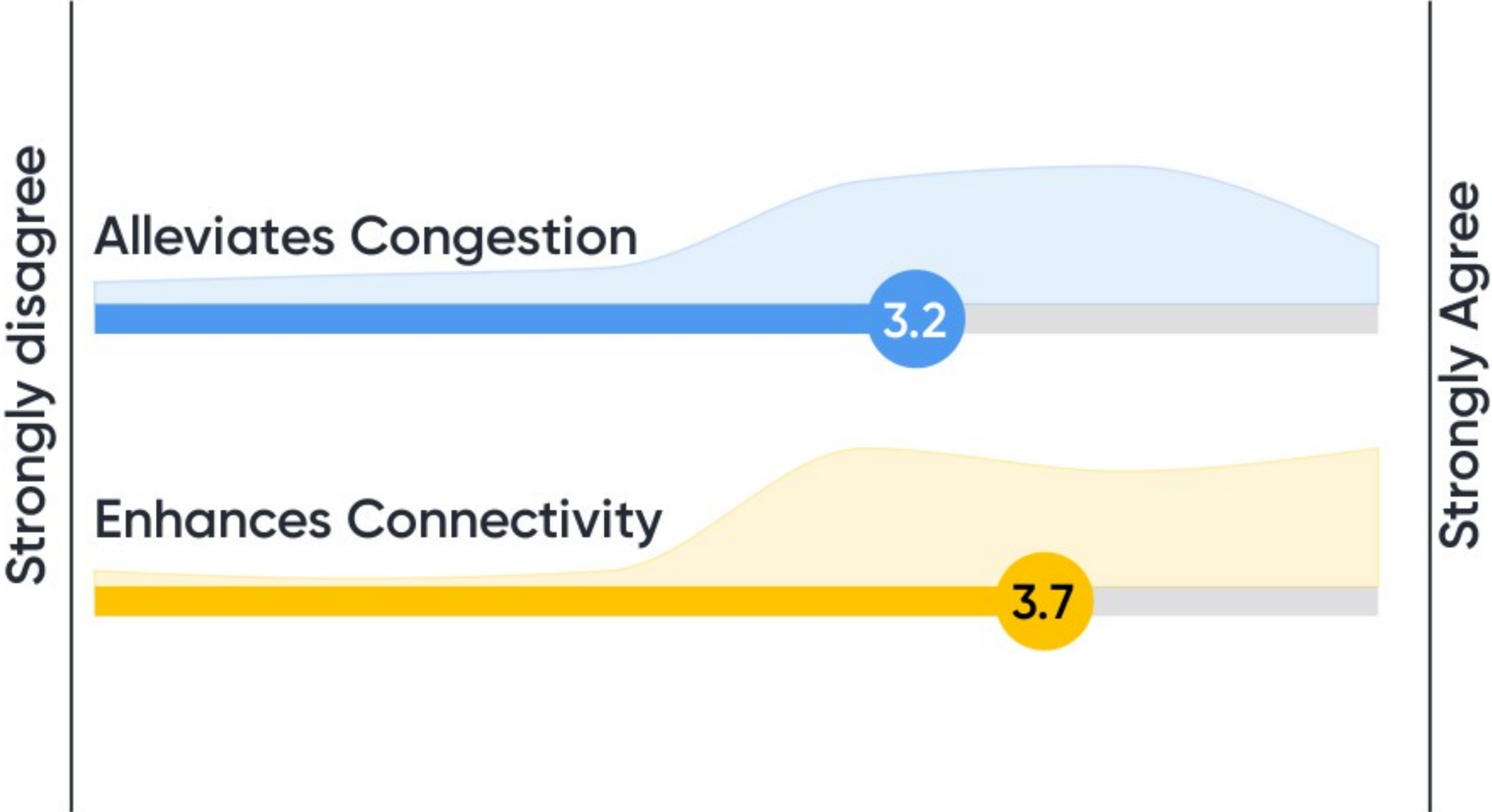
# Example Questions



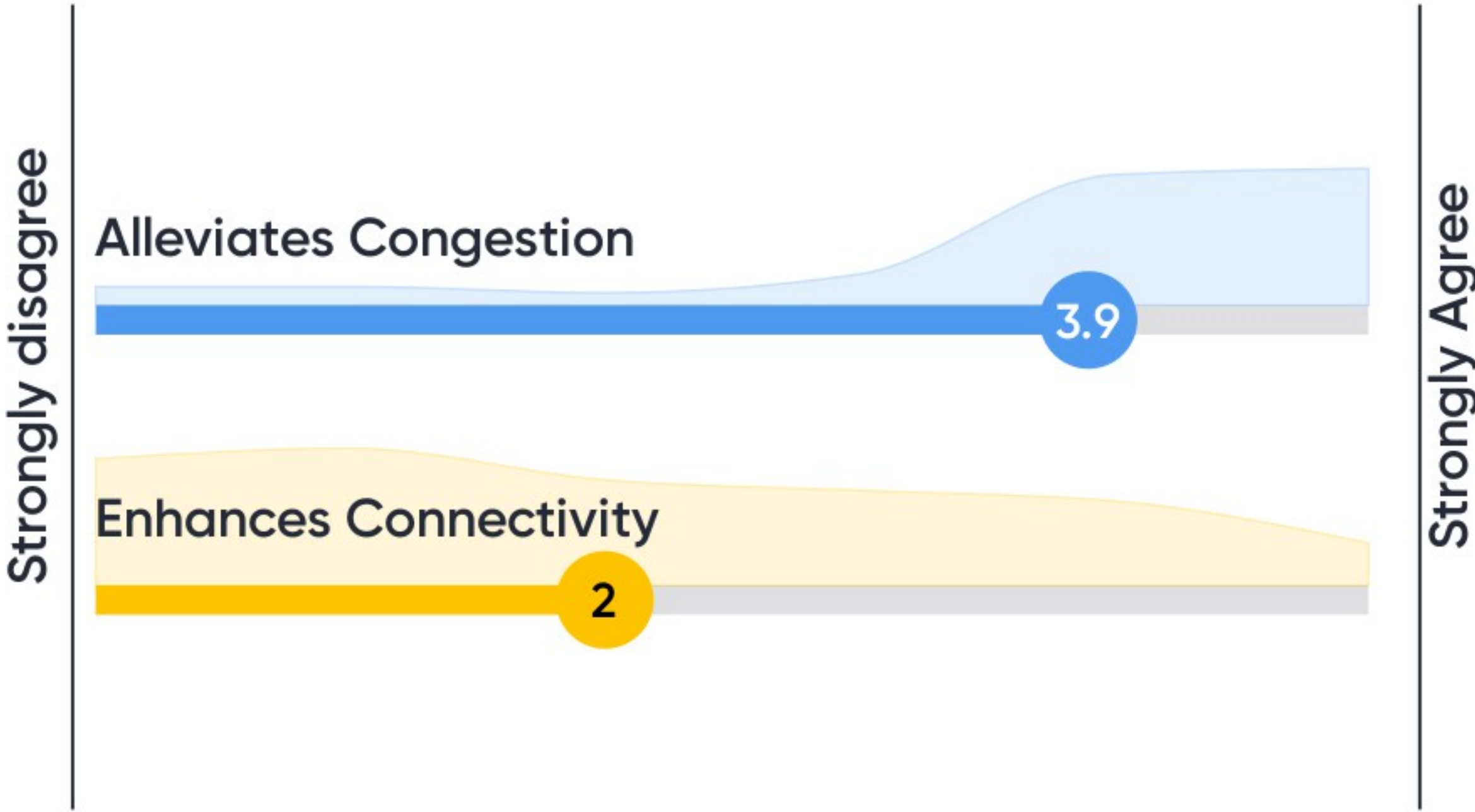
# Bike/Pedestrian Infrastructure



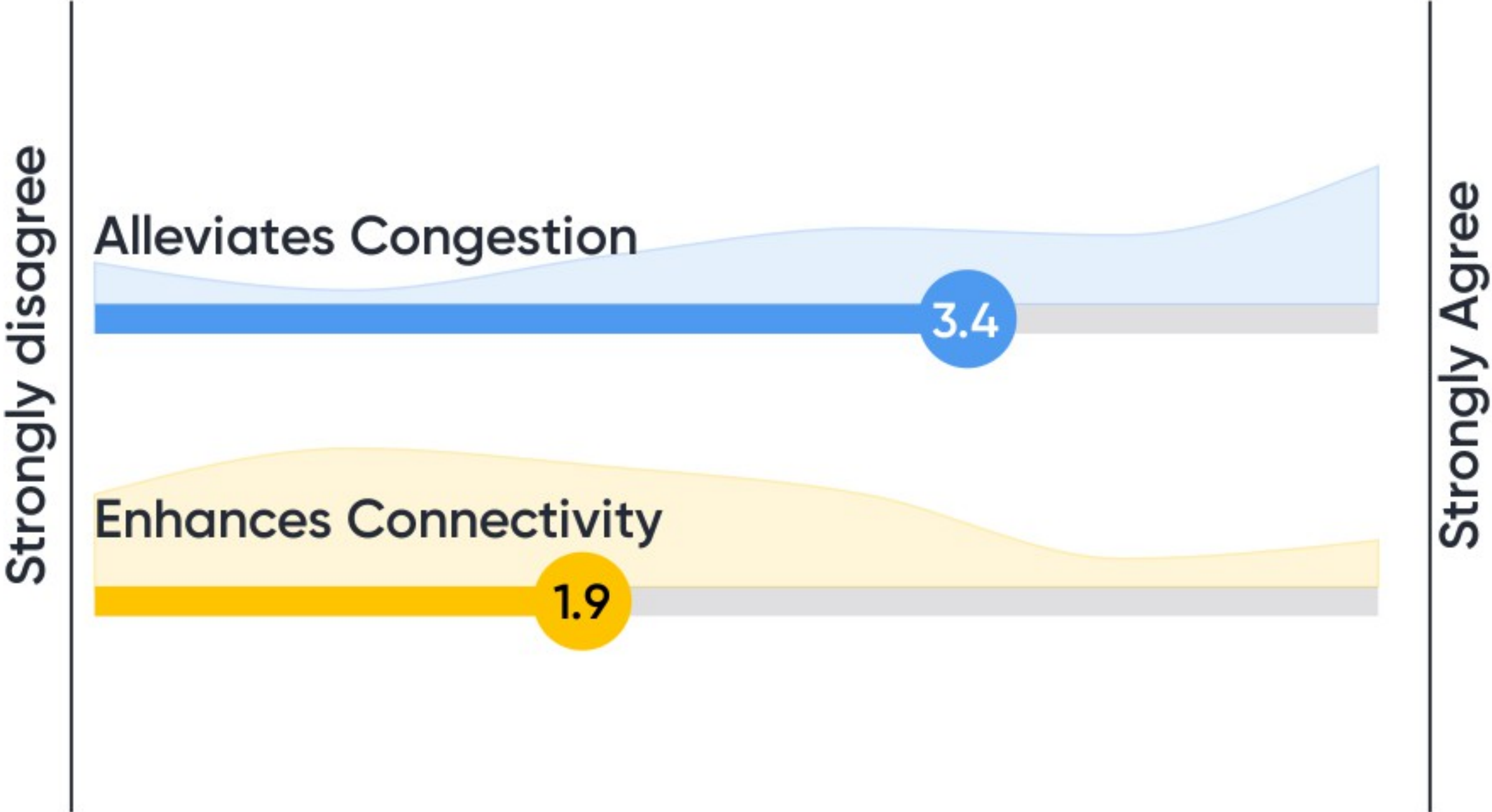
# Transit Routing/Microtransit



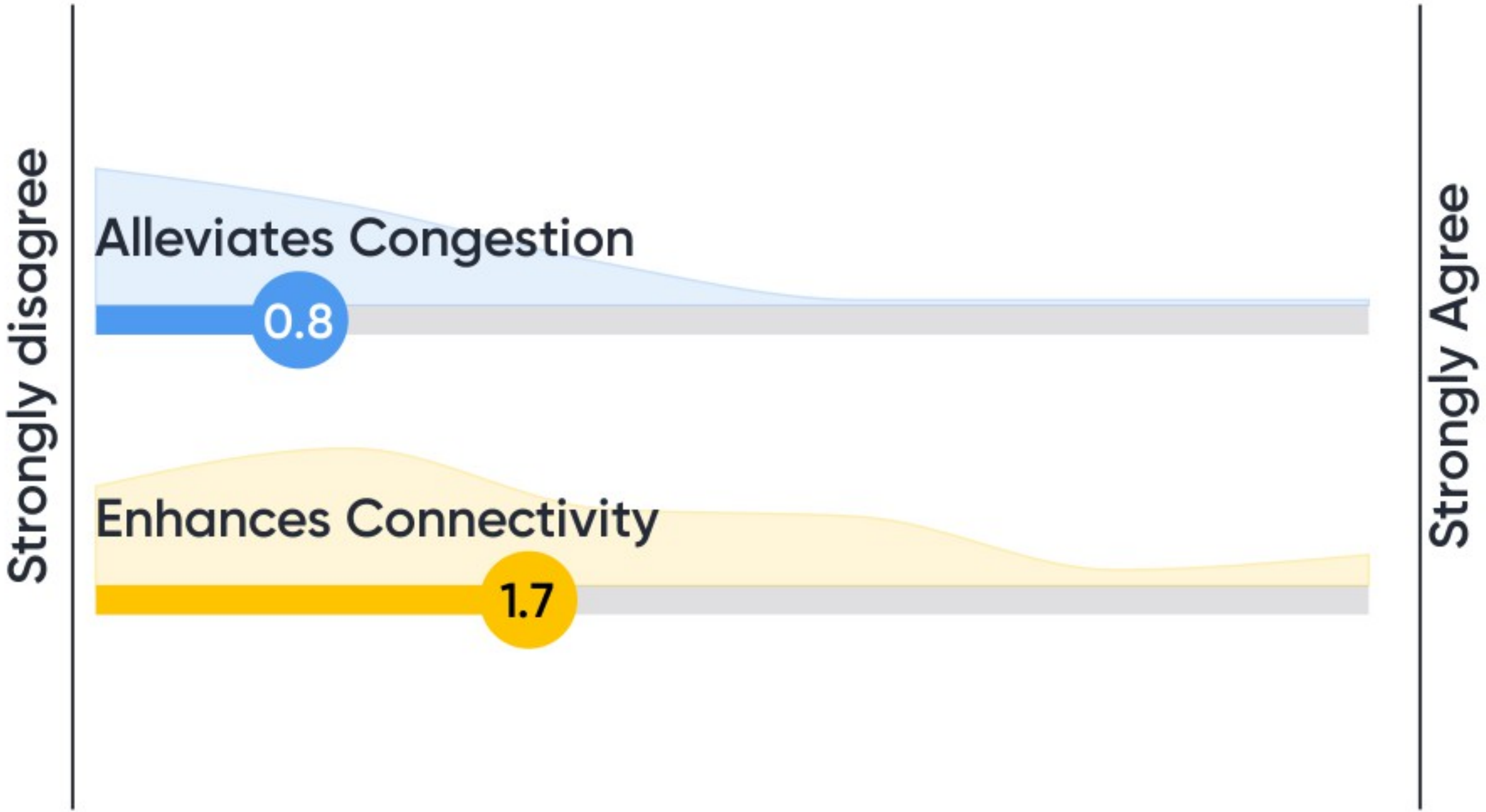
# Signal Enhancement



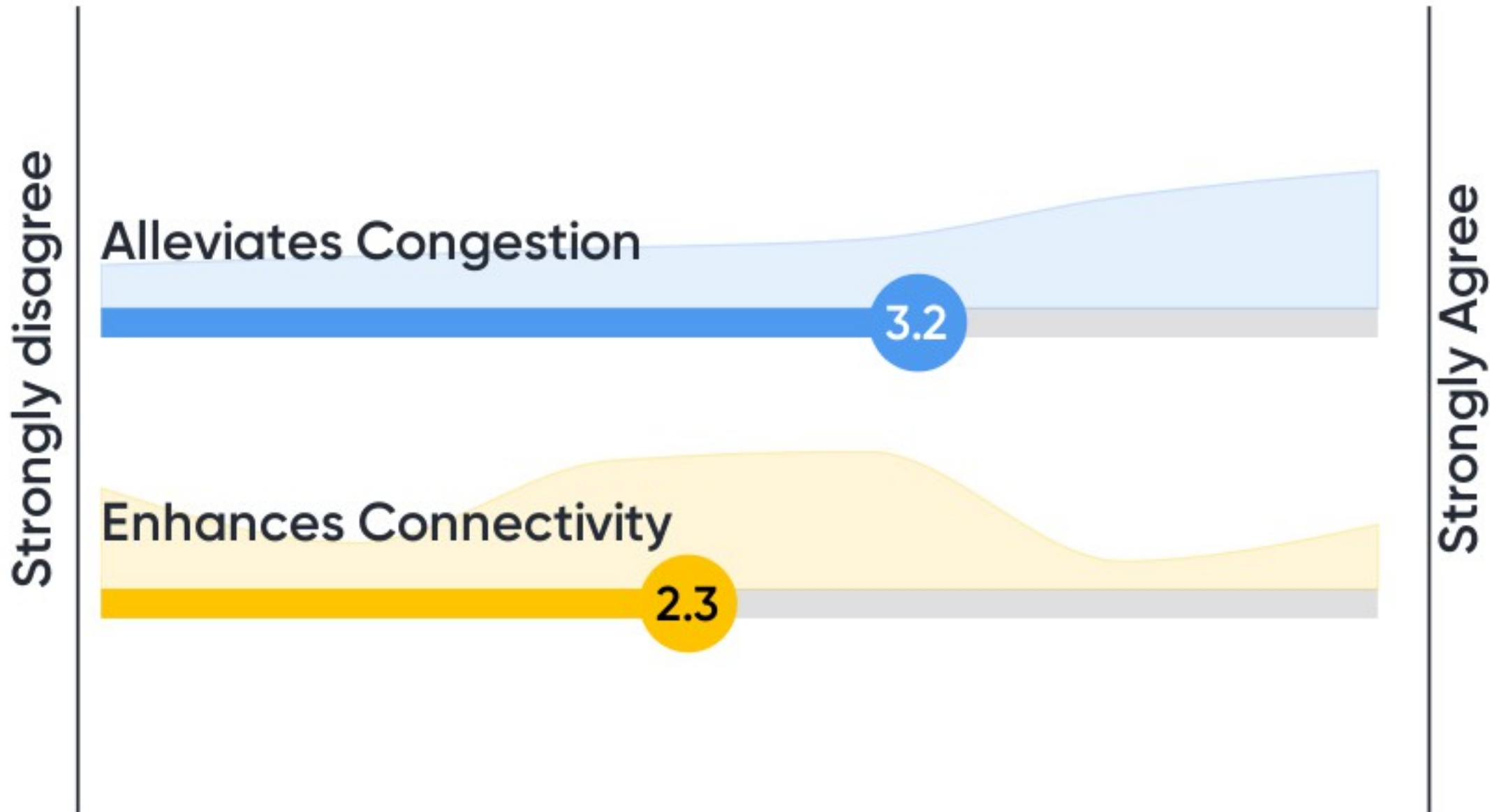
# Capacity Increase/Widening



# Landscaping/Hardscape/Gateway

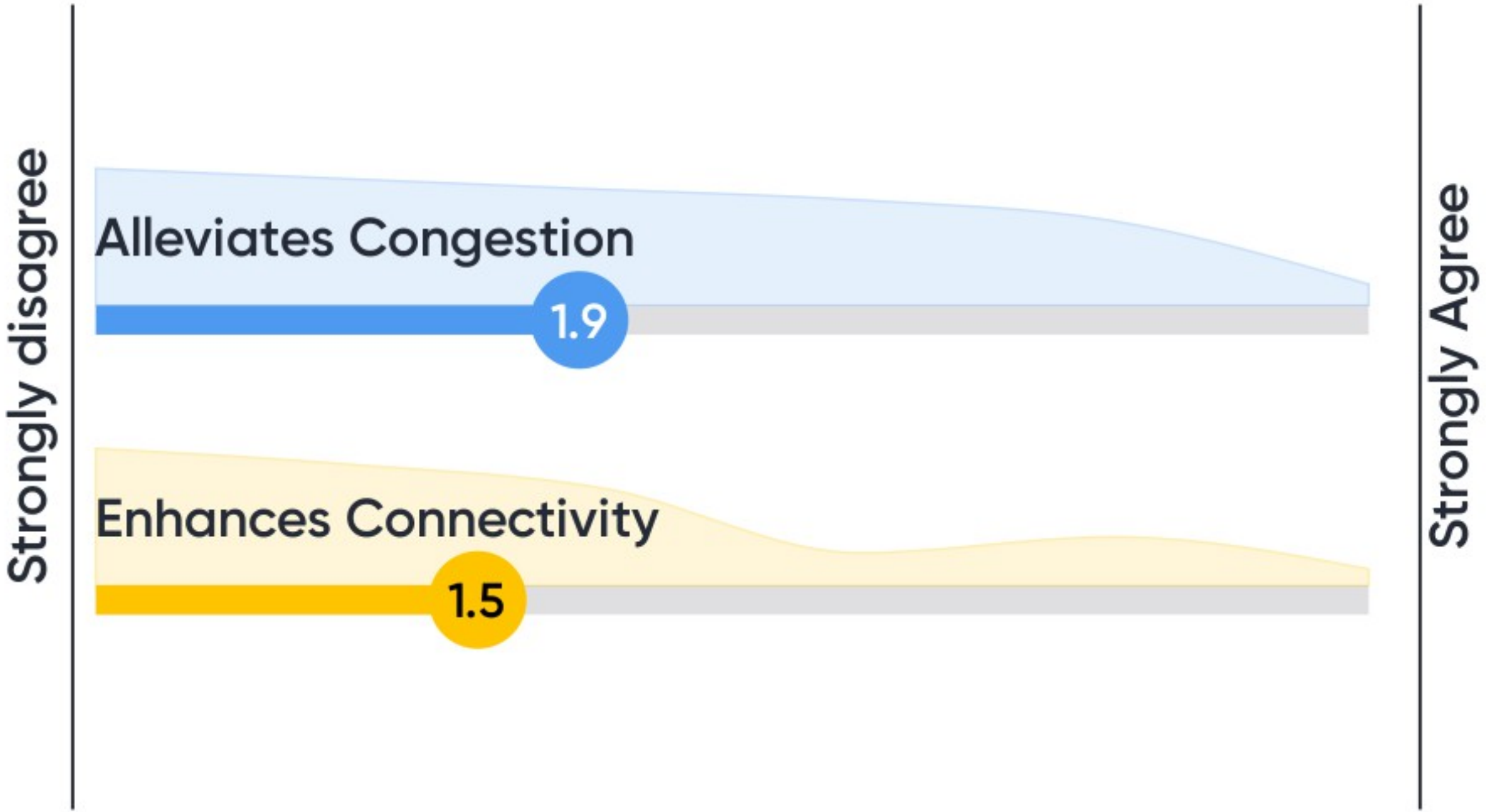


# Traffic Circles/Speed Tables/Intersection Improvements

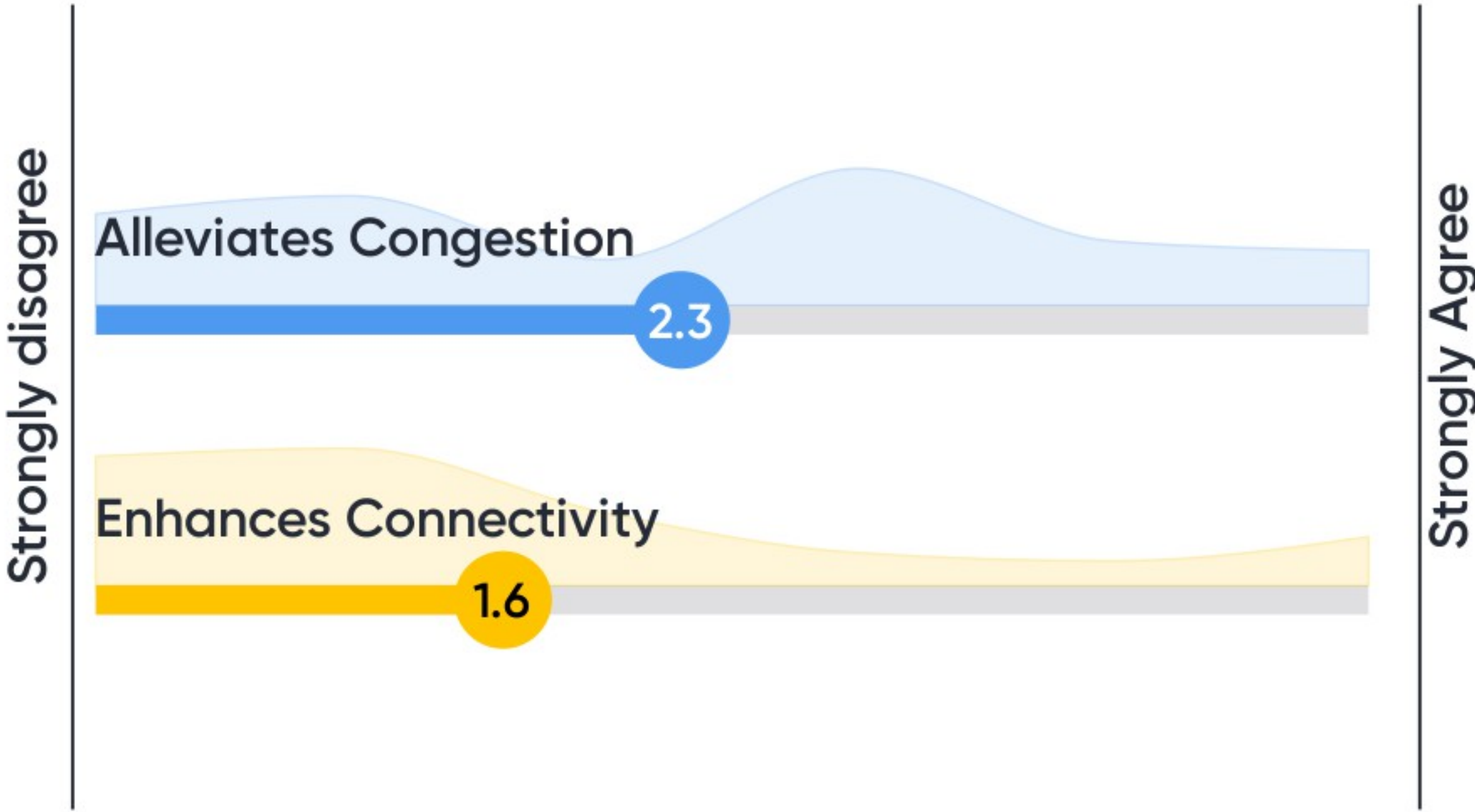




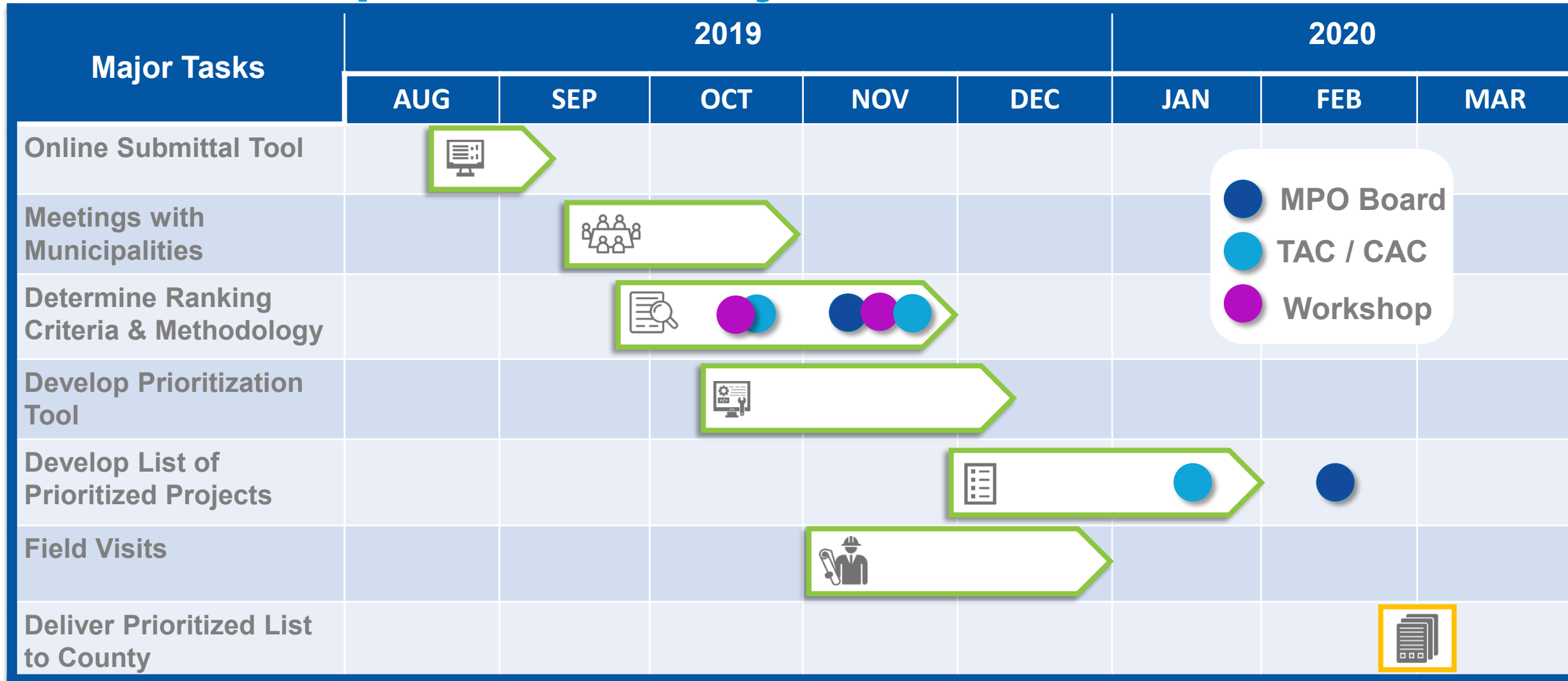
# Resiliency Improvements



# Fiber



# Draft Municipal Surtax Projects Schedule





Move People & Goods | Create Jobs | Strengthen Communities

## Questions?

### **Andrew Riddle**

Manager of Surtax Services

[Riddlea@browardmpo.org](mailto:Riddlea@browardmpo.org)

(954) 876-0067

### **Kerrie MacNeil**

Surtax Services Project Manager

[MacNeilk@browardmpo.org](mailto:MacNeilk@browardmpo.org)

(954) 876-0072