



# Community Oversight Advisory Team

## March 31, 2016

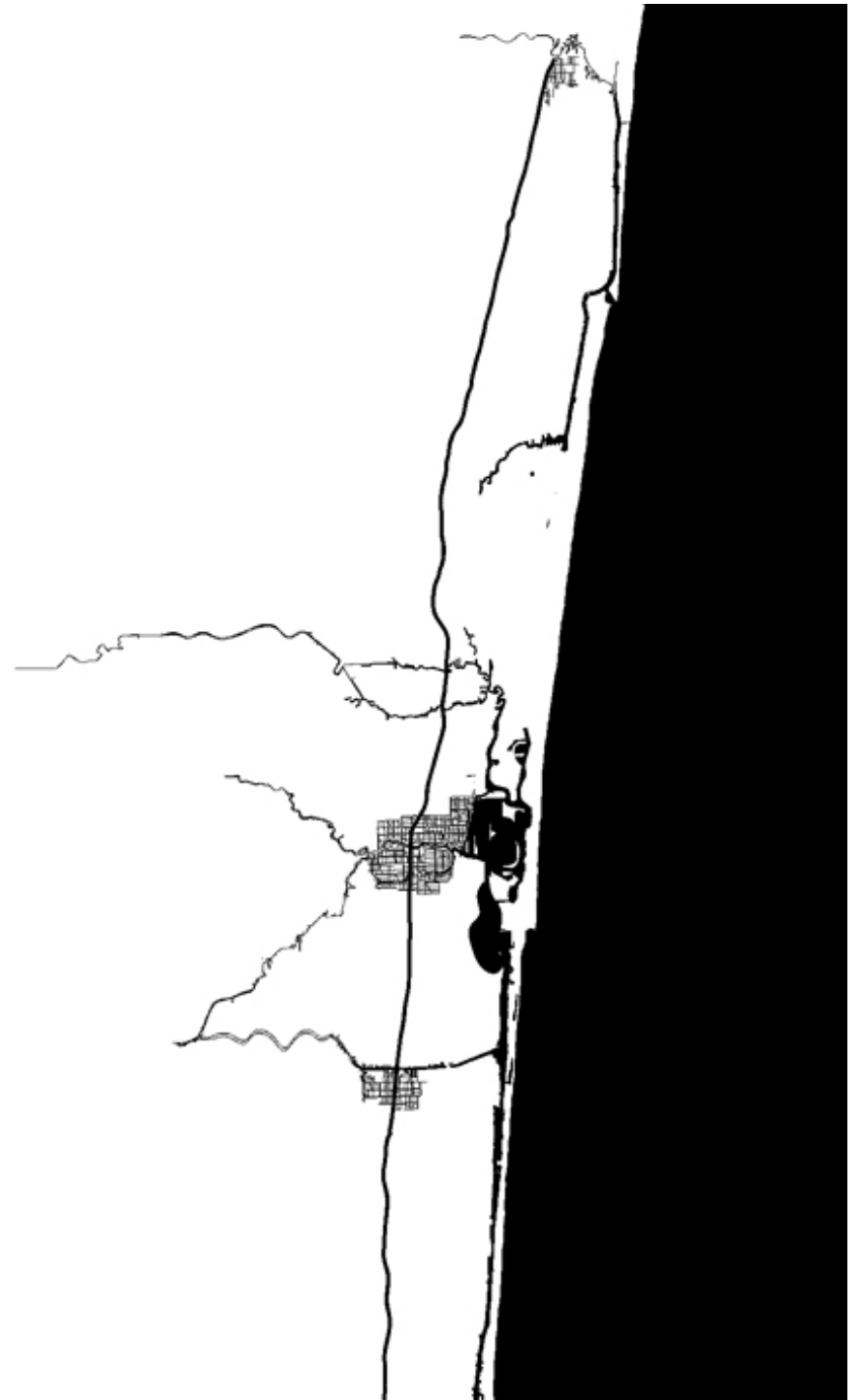
Barbara Blake Boy, Executive Director  
Broward County Planning Council



DEVELOPMENT OVER TIME

DEVELOPMENT OVER TIME

1915



---

1924



---

# 1940

Population ■ 39,794



1965



---

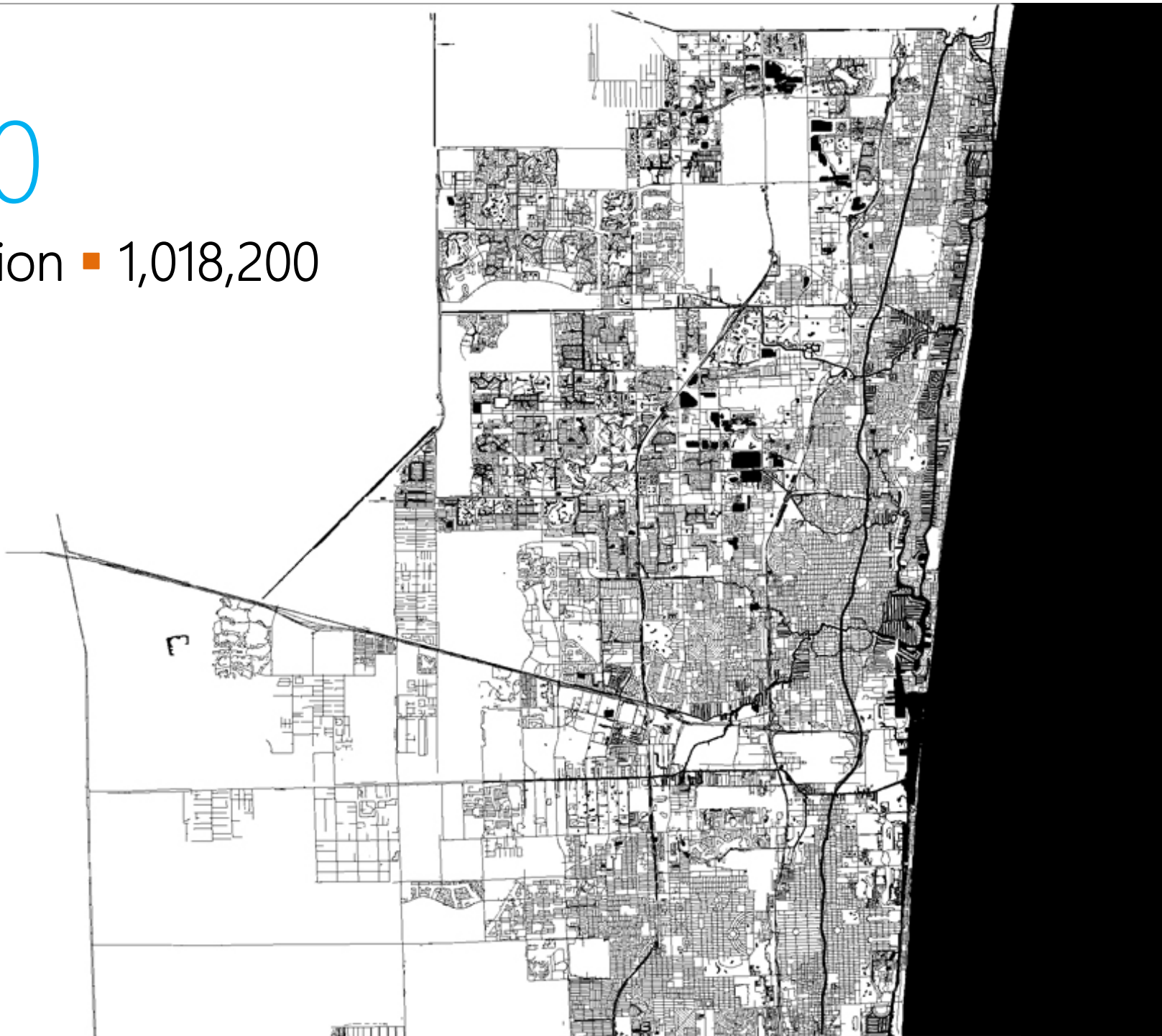
# 1970

Population ■ 620,100



# 1980

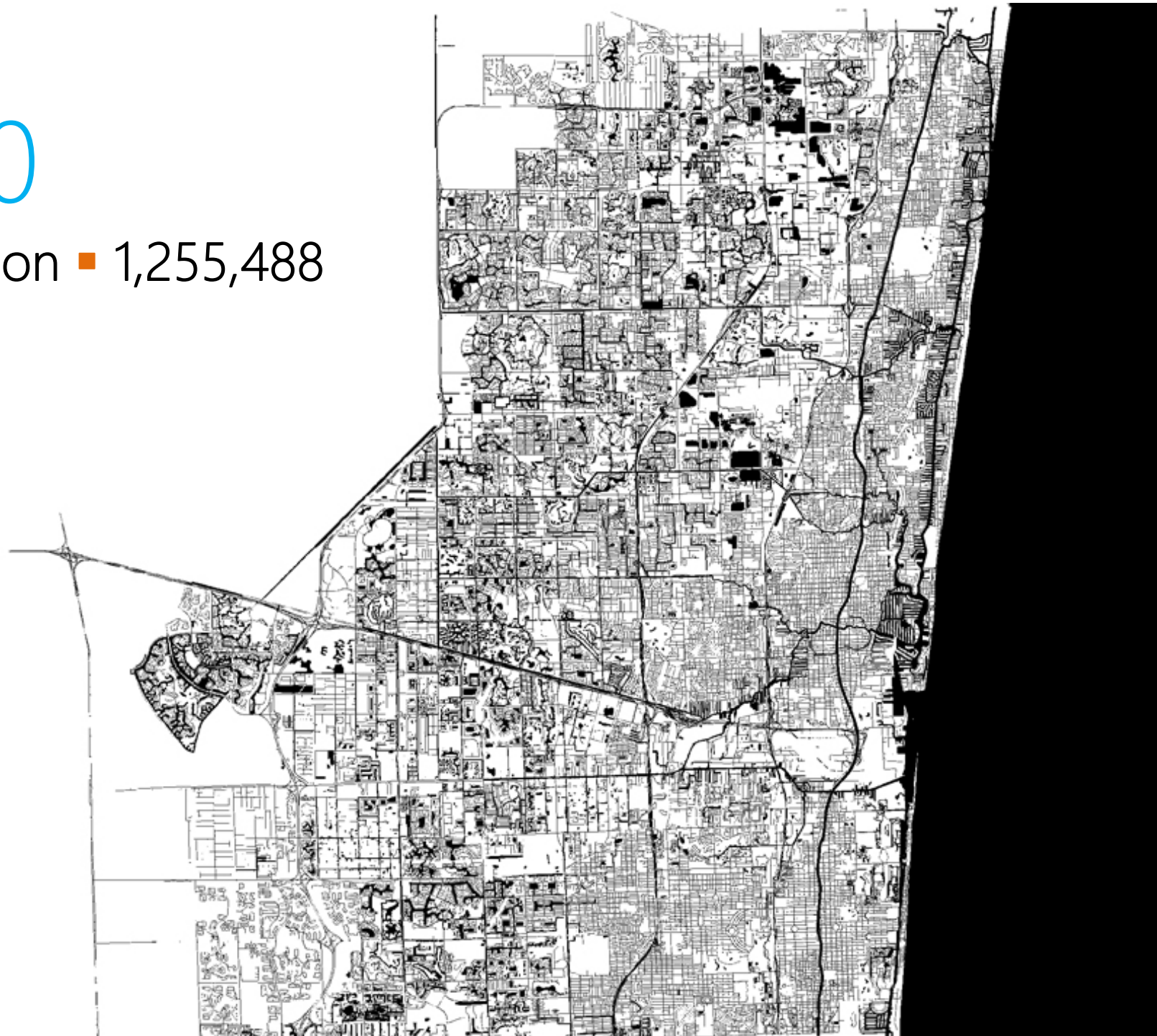
Population ■ 1,018,200





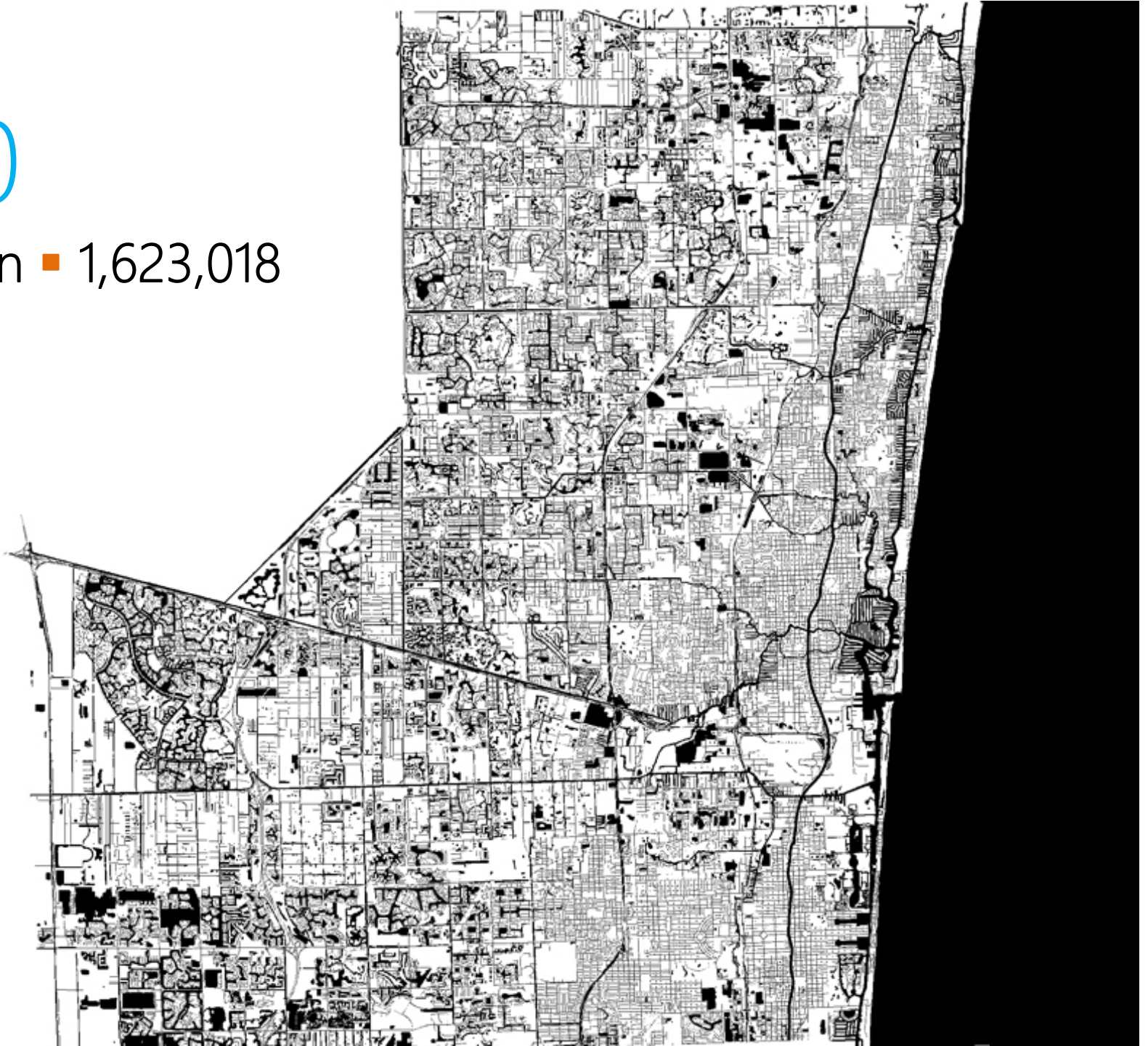
# 1990

Population ■ 1,255,488



# 2000

Population ■ 1,623,018

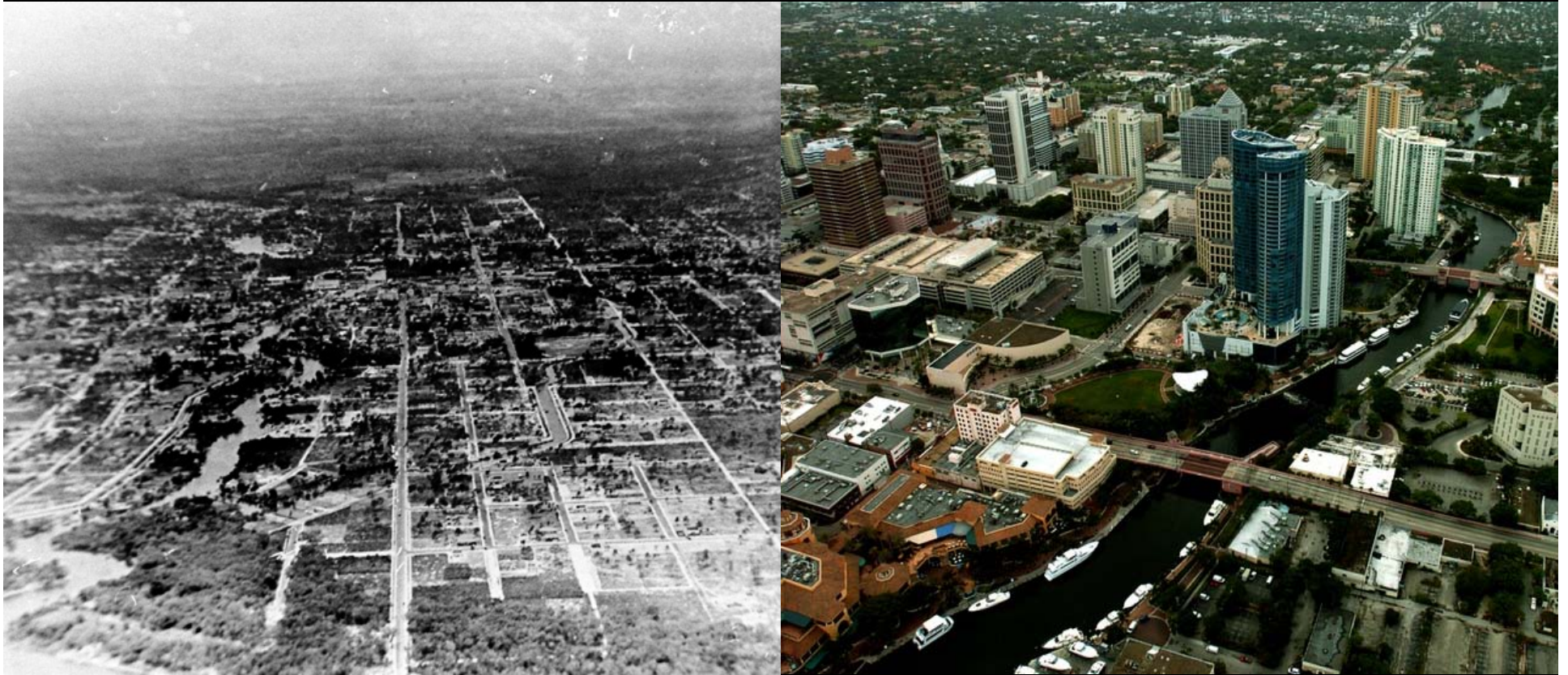


# 2015

Population ■ 1.8 million +



# Downtown Fort Lauderdale



1920s 2000s

Credit this photo:

State Archives of Florida, *Florida Memory*, <http://floridamemory.com/items/show/28584> & sunny.org

# Pompano Beach Bridge



1953 2013

Credit this photo:

State Archives of Florida, *Florida Memory*, <http://floridamemory.com/items/show/104212> & A. Meyer

# Fort Lauderdale-Hollywood International Airport



1988 2014

Credit this photo:

State Archives of Florida, *Florida Memory*, <http://floridamemory.com/items/show/244498> & Aviation Dept.

# Port Everglades



1930s 2016

Credit this photo:

State Archives of Florida, *Florida Memory*, <http://floridamemory.com/items/show/1188> & FPL

# The County's Role in Planning

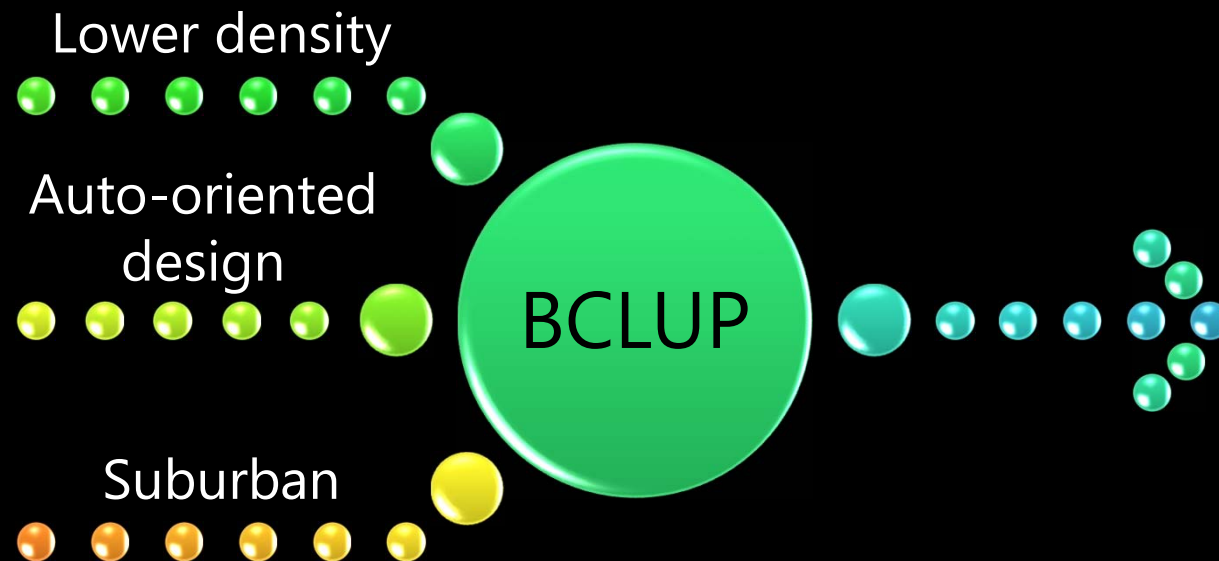
Late 1970's and Early 1980's

- ➔ Broward County Charter
- ➔ Broward County Land Use Plan
- ➔ Broward County Comprehensive Plan

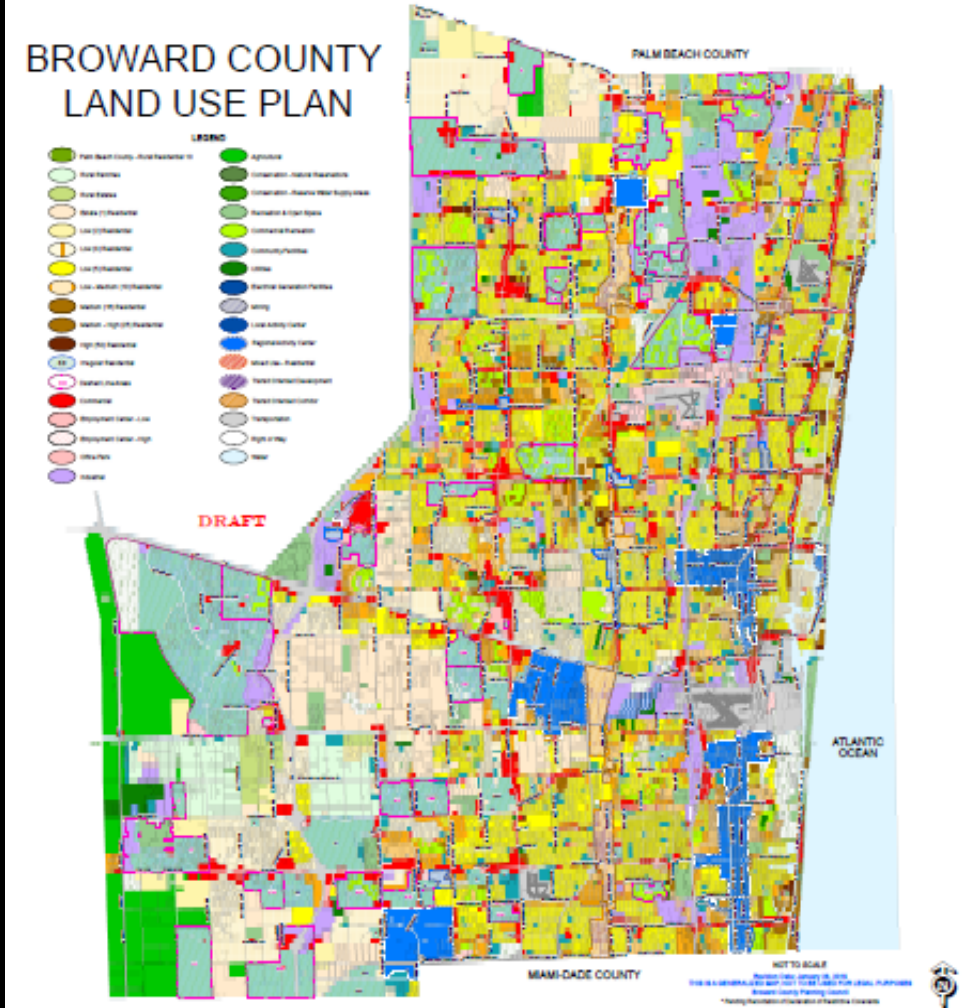


# Broward County Charter

⇒ Since the 1970's, Broward County has a countywide role in land use planning.



# What is the Broward County Land Use Plan?



1977 BCLUP



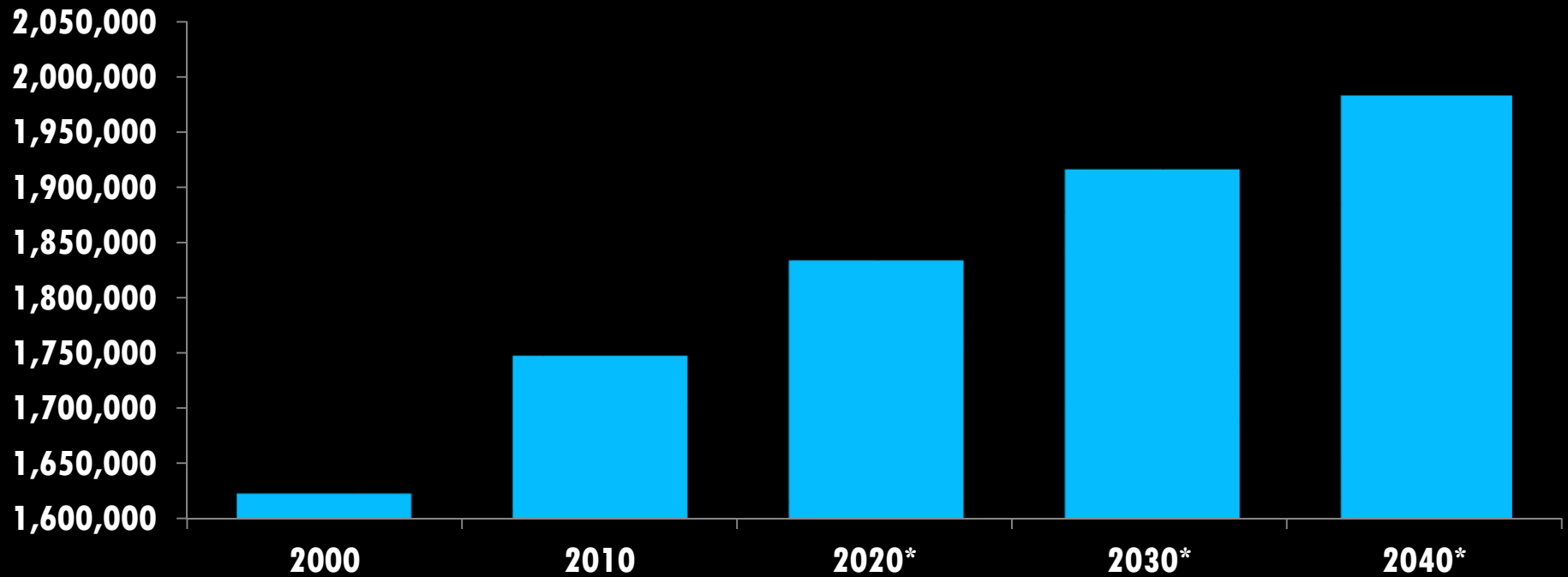
1989 BCLUP



Today



# Future Growth

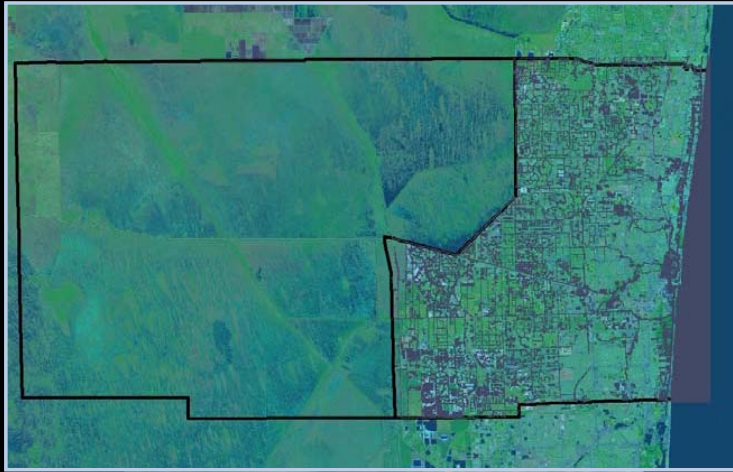


By 2040, Broward will have

**250,000**

new residents.

# Today



With the undevelopable Everglades to the west and Atlantic Ocean to the east, Broward County is almost built out.



# Transportation/Land Use Connection

# General Overview

- County development pattern: lower density, auto oriented, suburban model
- Urbanized area substantially built out
- Support a full range of multi-modal transportation options and adequately serve the County's current and future residents, businesses and visitors and strengthen the local economy

# **Make the Best Use of the Transportation Network to Move People, Goods and Services safely and efficiently while Incorporating and Promoting Complete Streets Principles where Appropriate**

## **Potential Implementation Measures/Considerations**

- Accommodating Complete Streets features into County-maintained roadways where practical and financially feasible, capitalize on intergovernmental coordination and technical assistance opportunities to identify and achieve efficient interconnected multi-modal networks throughout the County
- Supporting municipal and State Complete Streets projects



## Recognize and Address the Transportation and Housing Connection

### Potential Implementation Measures/Considerations

- Promote and direct redevelopment and mixed use opportunities towards major transportation hubs and corridors
- Support residential attainable housing bonus densities towards major transportation corridors, stations, and redevelopment areas

## **Promote and Support a Sustainable Funding Source for Countywide Transit Needs**

### **Potential Implementation Measures/Considerations**

- Identification, support and approval of a sustainable transportation funding source
- Identify and adopt minimum acceptable standards for the quality and quantity of transit service
- Promote mixed use development along major transit corridors
- The creation of additional capacity for other types of mobility by better utilization of existing rights-of-way, including transit, pedestrians and bicycles.

# Identify and Implement a Multi-Modal Level of Service Standard for Redevelopment Proposals

## Potential Implementation Measures/Considerations

- Evolve from Roadway Level of Service
- Implement credits for trip reductions due to pedestrian, bicycle and transit improvements
- Encourage true multi-modal implementation in redevelopment proposals

# Questions

**THANK YOU**