



# Broward Complete Streets Advisory Committee (CSAC) Meeting

Monday, May 8, 2017



# HOUSEKEEPING

- Please make sure you have signed in and have an agenda.
- This meeting is being recorded.
- Please introduce yourself and the organization(s) you represent.



# INTERACTIVE MEETING POLLING

- Looking for your feedback during the meeting today
- Event code: P141

The screenshot shows a web interface for a live poll. The top navigation bar includes a menu icon, the text "CSAC March 2017 Meeti...", and tabs for "Questions" and "Polls". The main content area is titled "Live poll" and contains an "Intro Question": "I like to sing 80s pop music in the car (or when I walk, ride, or take transit)." Below the question are four radio button options: "Strongly Disagree", "Disagree", "Agree", and "Strongly Agree". A "Send" button is located at the bottom right of the poll form. On the left side of the interface, there is a sidebar with a home icon and "Live" button, and a profile icon with "My profile" text.

# MPO CURRENT EFFORTS

- Safe Streets Summit 2017 – Centerpiece Competition
- Let's Go Biking! 2017 – Summary
- Groundbreaking Events
- Complete Streets Master Plan



# SAFE STREETS SUMMIT 2017 – Centerpiece Competition

- Scott Brunner
- Lauderdale Lakes Commissioner Sandra Davey
- Lauderdale Lakes Vice Mayor Veronica Edwards Phillips
- Lauderdale Lakes Commissioner Beverly Williams



# SAFE STREETS SUMMIT 2017 – Centerpiece Competition



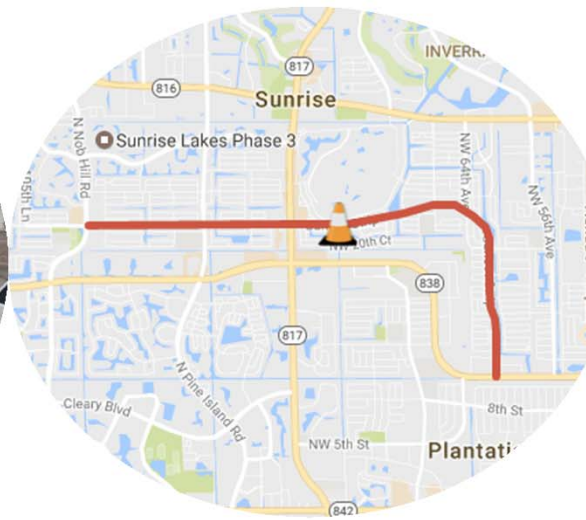
# LET'S GO BIKING! 2017



# RIBBON CUTTING AND GROUNDBREAKING EVENTS



Hollywood Blvd



Sunset Strip



SW 4<sup>th</sup> Ave



# COMPLETE STREETS MASTER PLAN

- Goal
  - To develop a prioritized list of Complete Streets projects to be programmed into the Broward MPO's Transportation Improvement Program (TIP).
- Project Advisory Committee (PAC)
  - Will meet periodically to guide the development of the Complete Streets Master Plan.
- Public Involvement will start in June.

# Cycling success: 10 U.S. cities pushing biking forward

12 

*New infrastructure, better bikesharing, and safer streets*

BY **PATRICK SISSON** | APR 18, 2017, 10:58AM EDT

<https://www.curbed.com/2017/4/18/15333796/best-cities-bike-commute-us-cycling>

## Broward County, Florida: Promoting safety on cycle-averse streets

Roadways in the Sunshine State have a bad track record when it comes to protecting cyclists and pedestrians. According a 2017 [Smart Growth America report](#) on street safety and design, nine of the 15 most dangerous cities for walkers are in Florida, a sad testament to the state's lack of pedestrian infrastructure. That backdrop makes the work of the Broward County Metropolitan Transportation Organization (MPO) more impressive.

With the help of a Centers for Disease Control grant, planners developed, adopted, and promoted a set of [Complete Streets](#) guidelines that gives cities a robust encyclopedia of options for safer, more pedestrian-friendly roadways. And, thanks to a [\\$11.4 million transportation grant](#) from the federal government, the MPO has [five complete streets projects](#) in the works. It even held a Safe Streets Summit to organize around the issue of pedestrian safety. It's no biking mecca, but it's diagnosed a problem and shown how similar areas can start shifting their planning mindset. "It's particularly admirable that Broward is pushing forward the way it is," says Dodds.



# Equitable Healthography and Complete Streets

Presented by:

**Anthony Olivieri**

MURP founder of FHEED, LLC

TOUCH Partner

# Equitable Healthography and Complete Streets

**Anthony Olivieri, MURP**

Technical Advisor for TOUCH: Partnerships Transforming Our Community's Health

Complete Streets Advisory Committee

May 8th, 2017

Broward Regional Health Planning Council



This presentation was supported by Cooperative Agreement Number, 1U58DP005790-02 funded by the Centers for Disease Control and Prevention. Its contents are solely the responsibility of the authors and do not necessarily represent the official views of the Centers for Disease Control and Prevention or the Department of Health and Human Services.

# Partnerships Transforming Our Community's Health



- True collaborative over 30 Partners
- Funded nationally by the CDC
- Funded locally by the Health Foundation of South Florida and Community Foundation of Broward
- Strategies fostered by TOUCH are funded by USDA, Humana, and the United Way of Broward County



**Collective  
Impact**



# TOPICS

- I. Healthography, Equity vs. Equality
- II. Place, Policy and Health
- III. Healthography Inequities in Broward County

# HEALTHOGRAPHY

“Studies show that where you live and the environment in which you grew up can have a significant impact on one’s overall health.” –CSAC minutes, 3/13/17

## **Healthography=Health + Place**

- Health outcomes are not randomly distributed across space.
- In urban areas, where there are great social inequities across space, health inequities follow.

# Equality vs. Equity

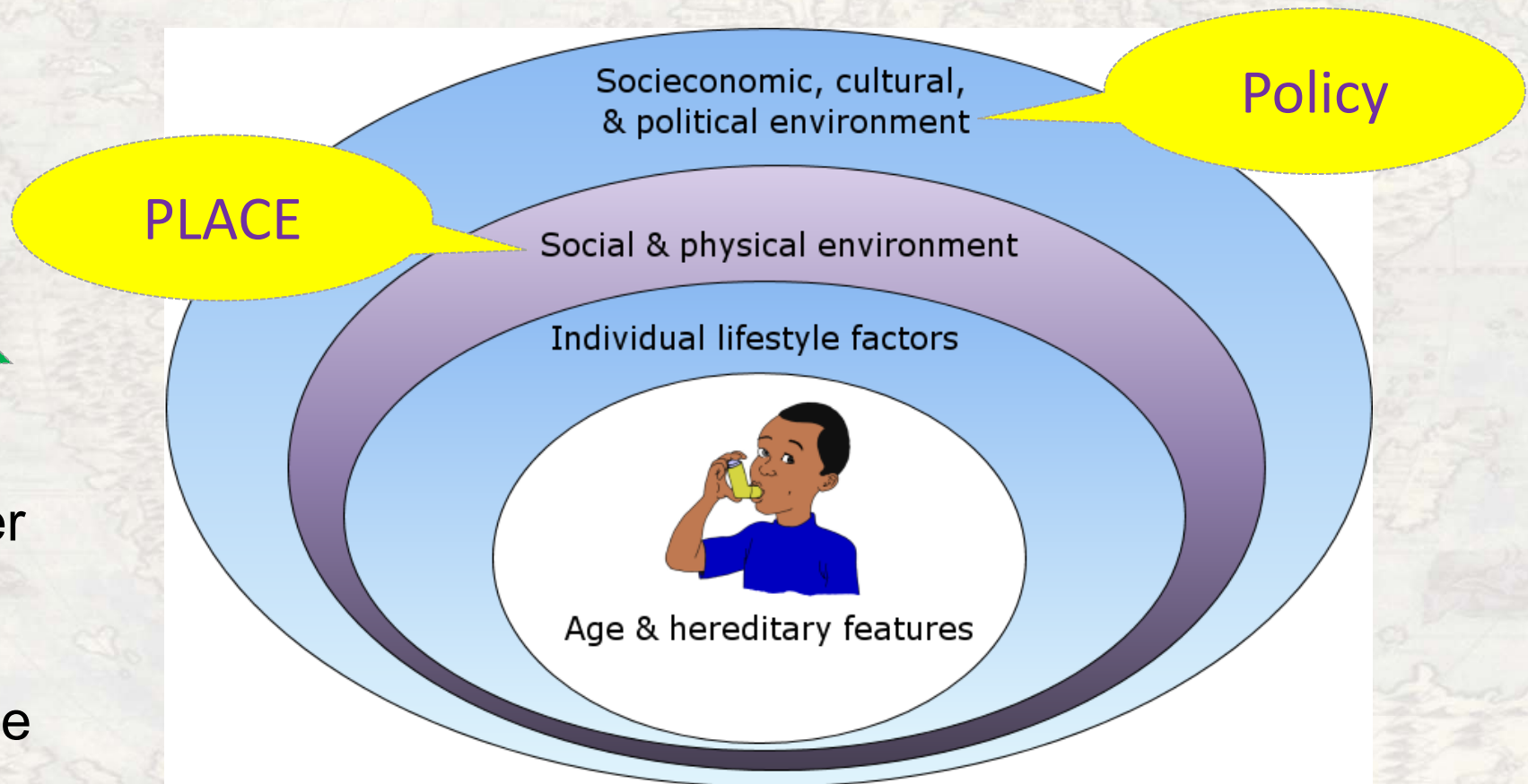




# Place & Policy: Determinants of Health

“The complex, integrated factors that contribute to a person's current state of health.”

  
Greater  
Power  
For  
Change



# Health Disparities

**Health Disparities** are ““differences in rates of illness, disease, or conditions among different populations.”

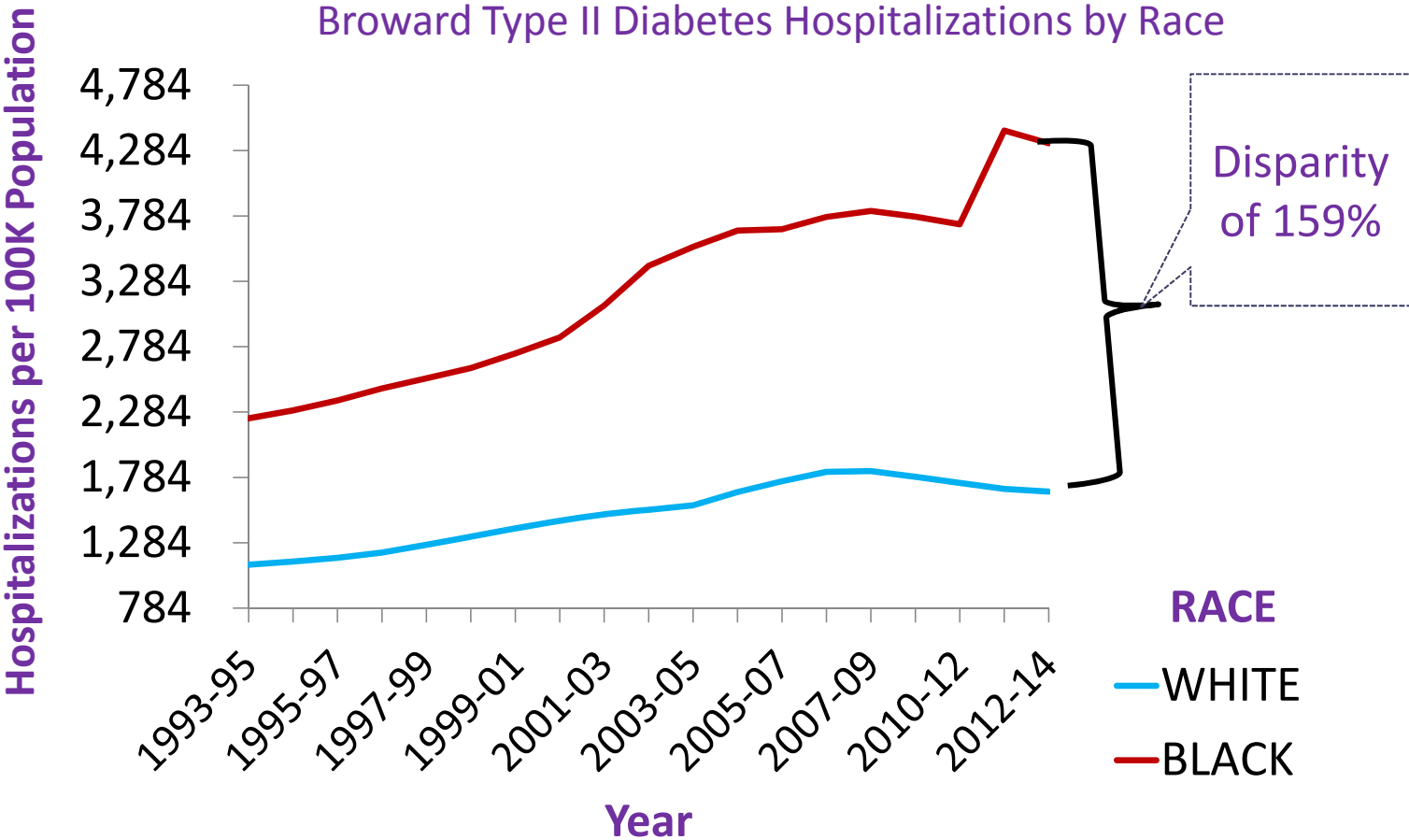
—Robert Wood Johnson &  
National Association of County and City Health Officials

# Health Inequities

**Health inequities** are “differences in health which are not only unnecessary and **avoidable** but, in addition, are considered **unfair and unjust.**”

—Margaret Whitehead  
Department of Public Health  
University of Liverpool

# Broward Diabetes Disparities by Race

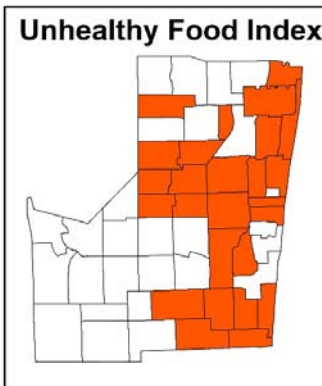


Data: Florida Agency for Health Care Administration (AHCA) via FloridaCharts.com

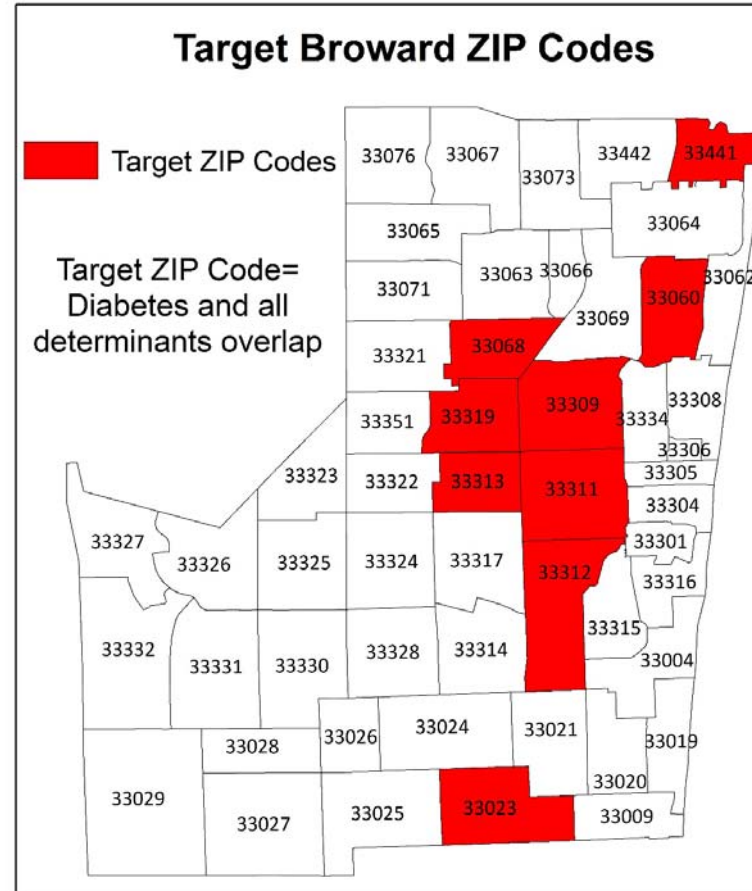
# Converging Above County Rates of Diabetes and Health Determinants in Broward County, 2012



**Diabetes Crude Rate = 155 per 100,000**



**Unhealthy Food Index Denominator = 1,098**

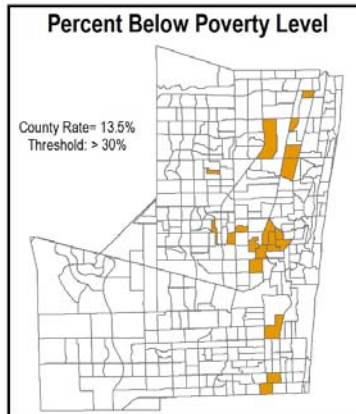


**Black Population = 26%**

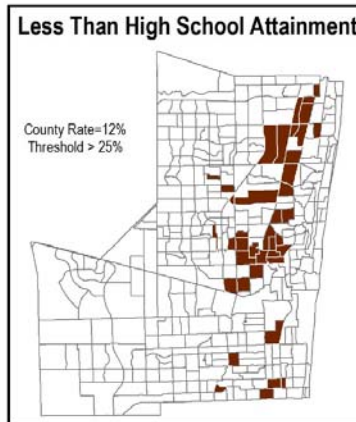


**EITC = 21%**  
10 Miles

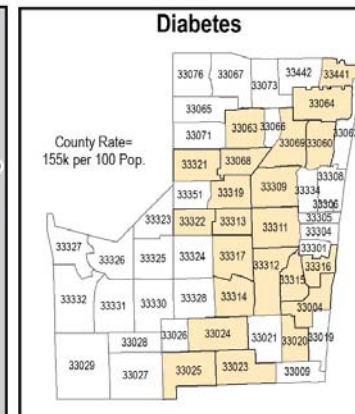
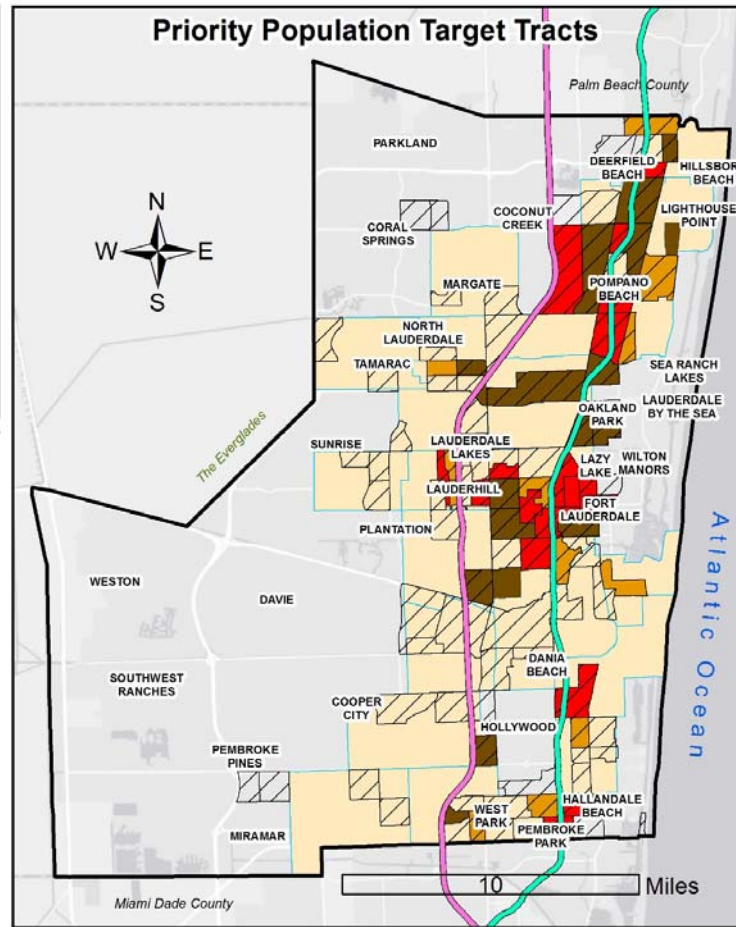
# Broward County Priority Population Target Tracts: Converging Health Determinants



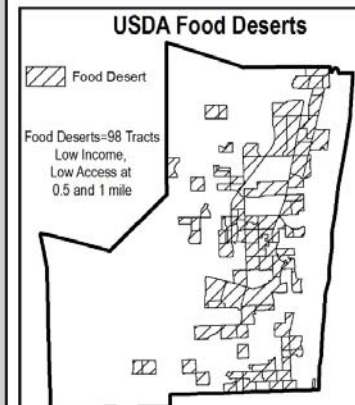
Source: U.S. Census, ACS 2012, 5 year summary, S1701 Poverty Status



Source: U.S. Census, ACS 2012, 5 year summary, B15003 Educational Attainment, Population 25 years and older.



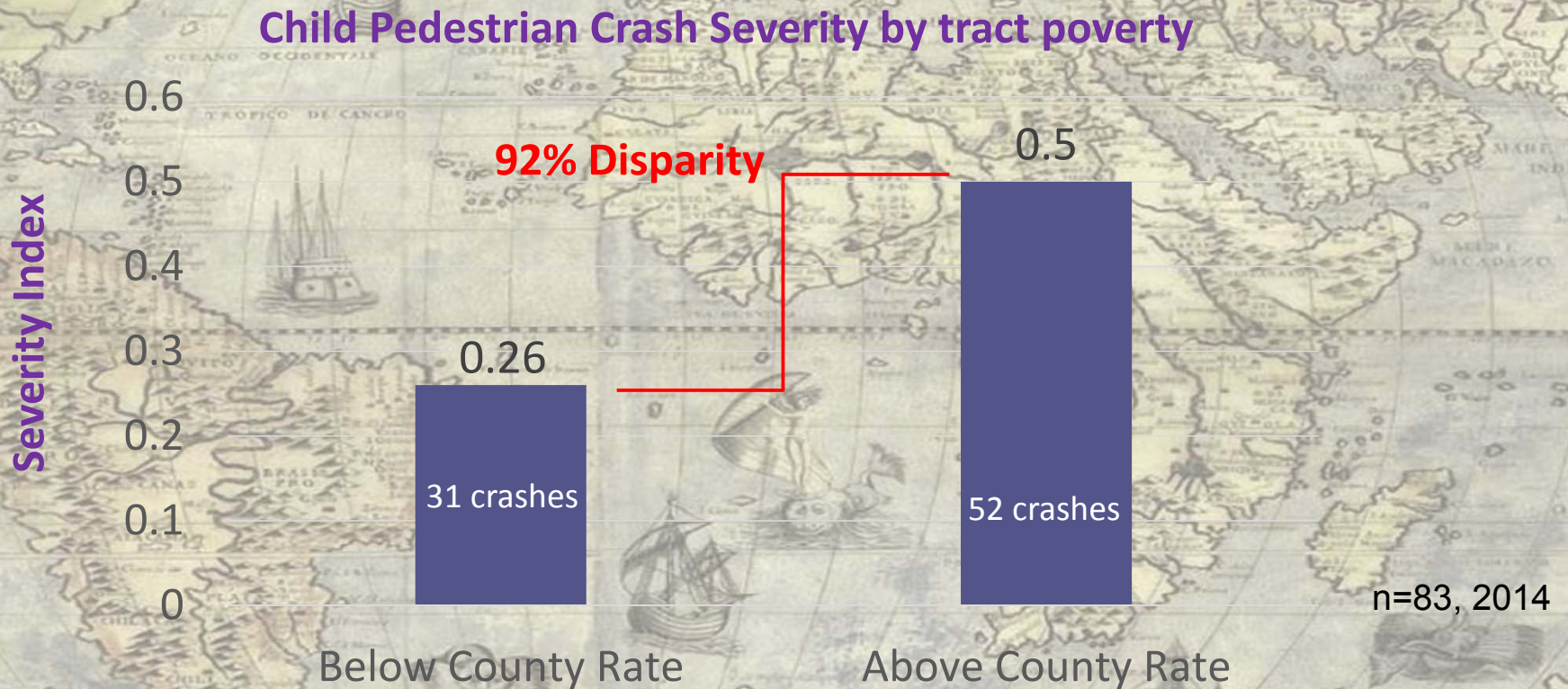
Source: Broward Regional Health Planning Council Data Warehouse, Prevention Quality Indicator #3, Long Term Diabetes by ZIP Code, 2010



Source: USDA ERS - Food Access Research Atlas, 2013

- Below Poverty > 30%
- Poverty and Education Overlap
- Diabetes
- Highways**
- Less than HS Attainment > 25%
- Food Deserts
- Broward County Boundary
- I-95
- TURNPIKE

# Child Pedestrian Injury Disparities by Poverty



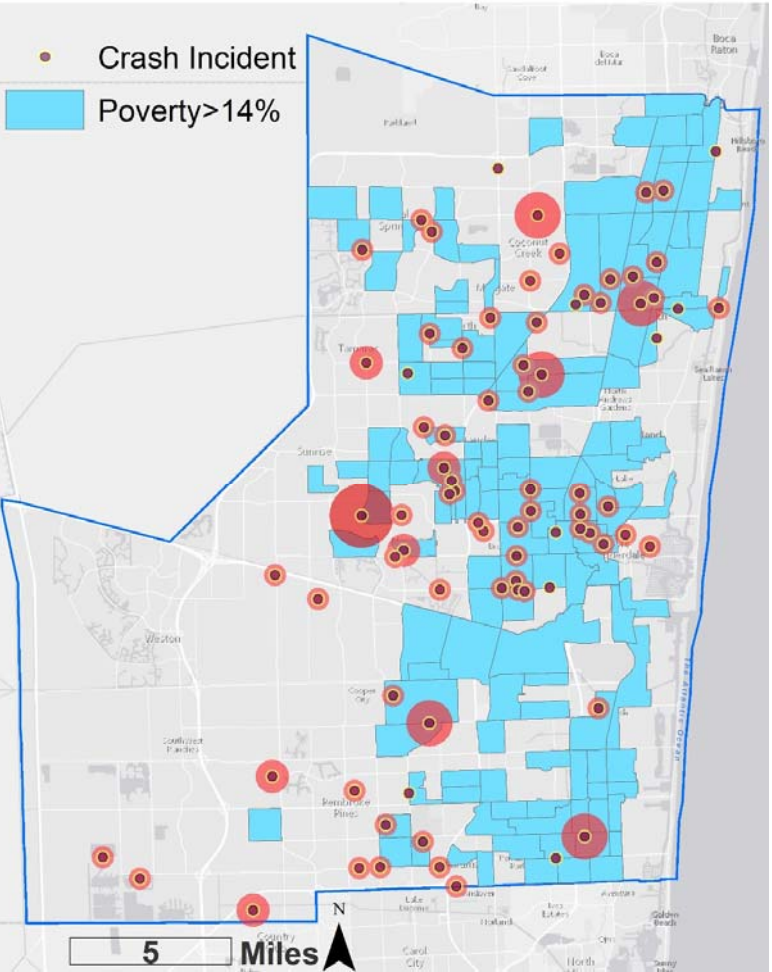
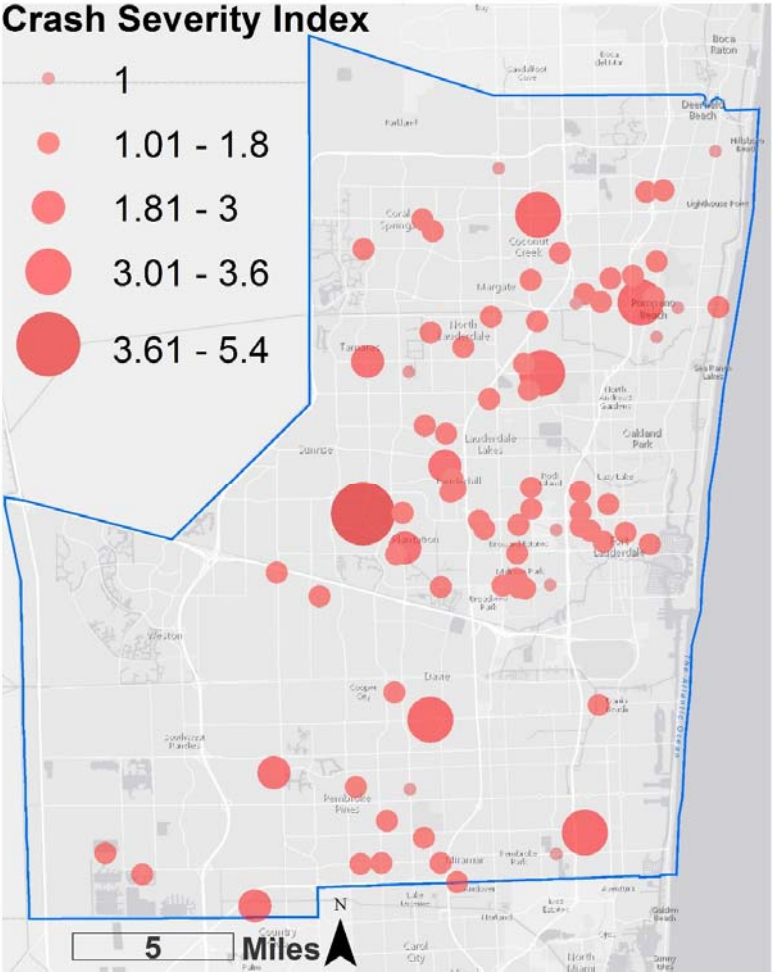
Crash Data Source: Signal Four Analytics from August 2011 and July 2015 via Katrina Lopez, WalkSafe® Statewide Coordinator, Florida. August 2011- July 2014 for children ages 5-14.

**County Poverty: 14%**  
(ACS 2008-2012)

# Geographic Pedestrian Injury Disparities

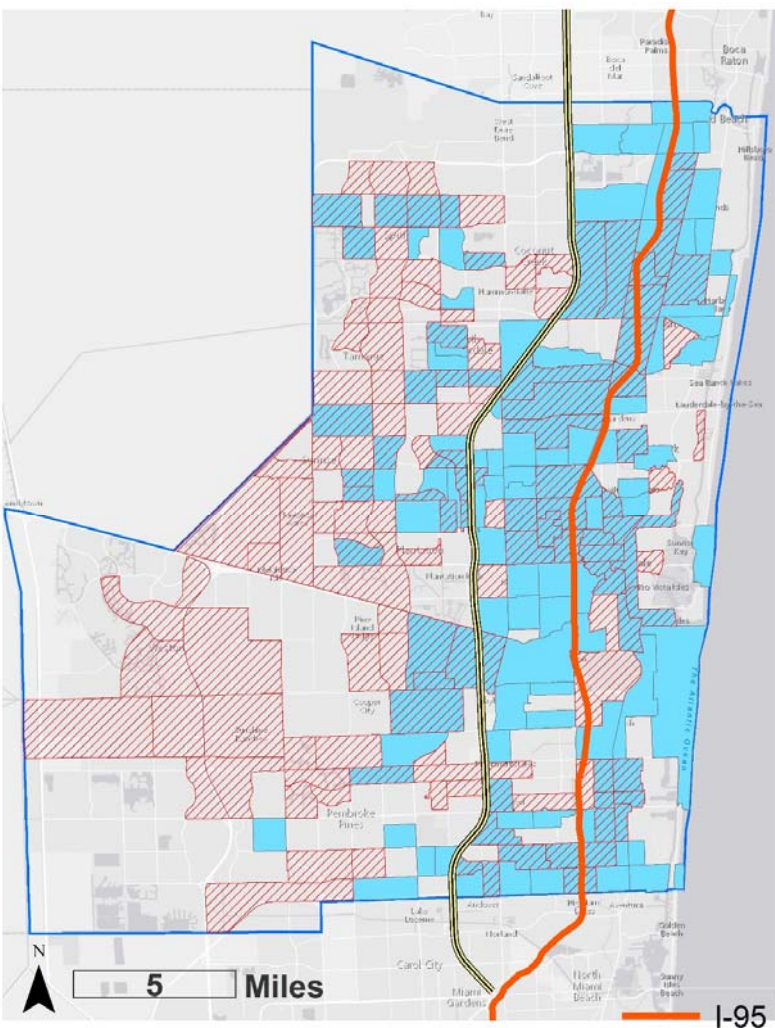
**Crash Severity Index**

- 1
- 1.01 - 1.8
- 1.81 - 3
- 3.01 - 3.6
- 3.61 - 5.4

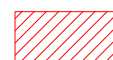




# Severe Injury Crash Disparities

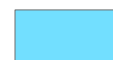


— I-95



Severe Injury Crashes above mean (42)

== TURNPIKE



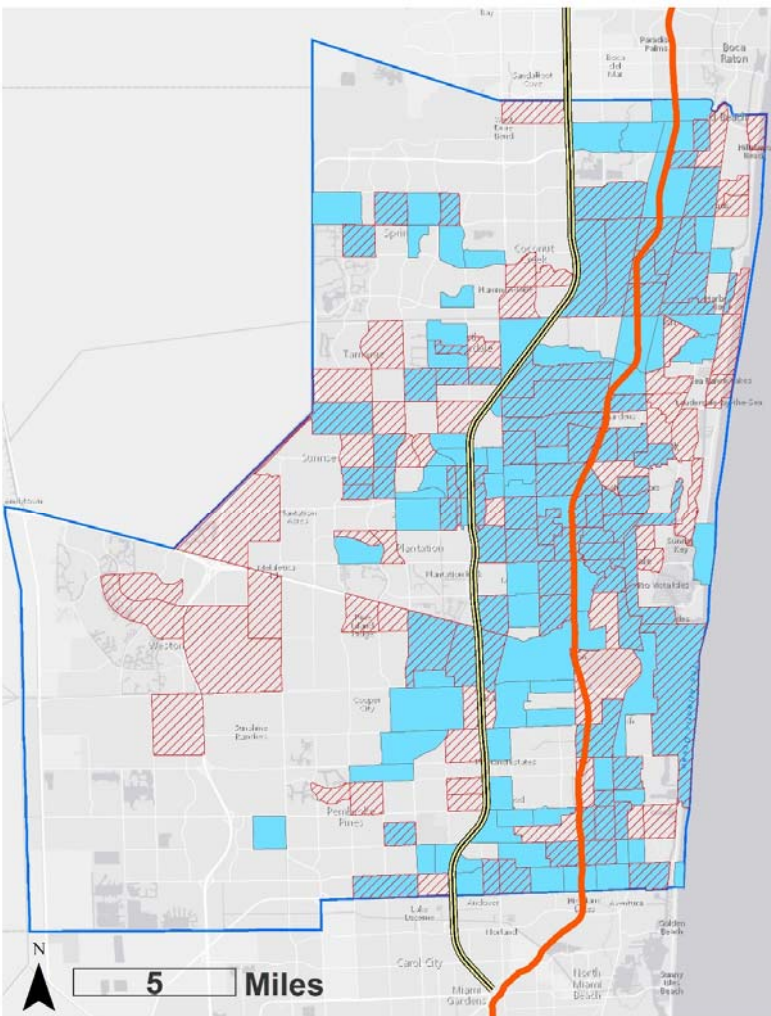
Poverty above mean (15%)

Table 1	SEVERE INJURIES		
	Low Poverty	High Poverty	Disparity
Mean	35.2	53.3	+51% *
Tracts	211	149	
Severe Injury Tract Overlap	31%	48%	

\*=Significant at alpha 0.05, p-val<0.000

Injury rate for 10,000 population per tract. n=7,526 severe injuries, 2014  
Data courtesy of Lisa Juan, Kimley-Horn via the FDOT Unified Basemap Repository, 2014

# Pedestrian Injury Crash Disparities



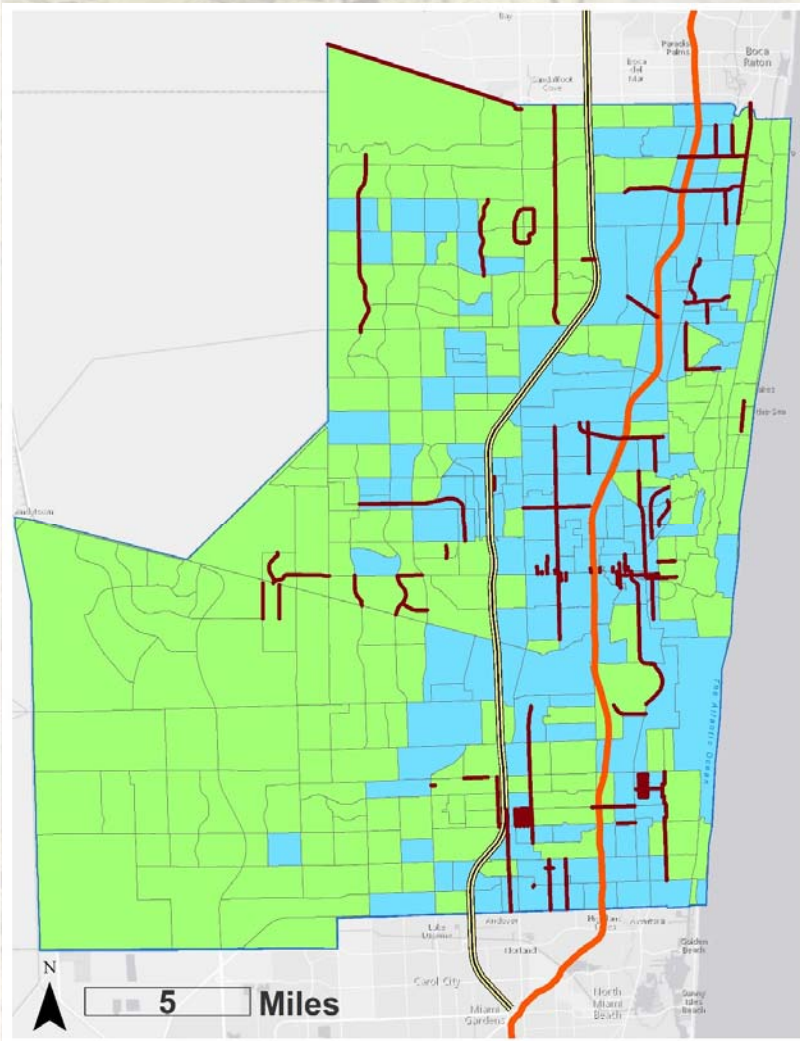
- I-95
- == TURNPIKE
- Pedestrian Injury Crashes above mean (2.46)
- Poverty above mean (15%)

<i>Table 2</i>	<b>PEDESTRIAN INJURIES</b>		
	<b>Low Poverty</b>	<b>High Poverty</b>	<i>Disparity</i>
Mean	1.5	3.8	+145% *
Tracts	211	149	
Pedestrian Injury Tract Overlap	25%	52%	

\*=Significant at alpha 0.05, p-val<0.000

*Injury rate for 10,000 population per tract. n=408 injuries, 2014*  
 Data courtesy of Lisa Juan, Kimley-Horn via the FDOT Unified Basemap Repository, 2014

# Complete Streets Projects and Poverty



- Mobility Projects 2016
- I-95
- = TURNPIKE
- Poverty below mean (15%)
- Poverty above mean (15%)

Measure	Low Poverty Tracts	High Poverty Tracts
Percent of Tracts with a Project	27%	48%
Total Miles of Projects	187	226
Mean Project Miles	0.88	1.51

# Conclusions

- There are alarming, preventable health inequities in Broward County, which appear to be associated with community-level poverty and disinvestment.
- Patterns of pedestrian injuries appear to be more frequent and severe in tracts with greater poverty .
- Currently, the number and length of Complete Streets projects appear to be implemented with equity in mind.
- However, are we building community capacity in higher poverty neighborhoods to fully benefit from Complete Streets Projects?

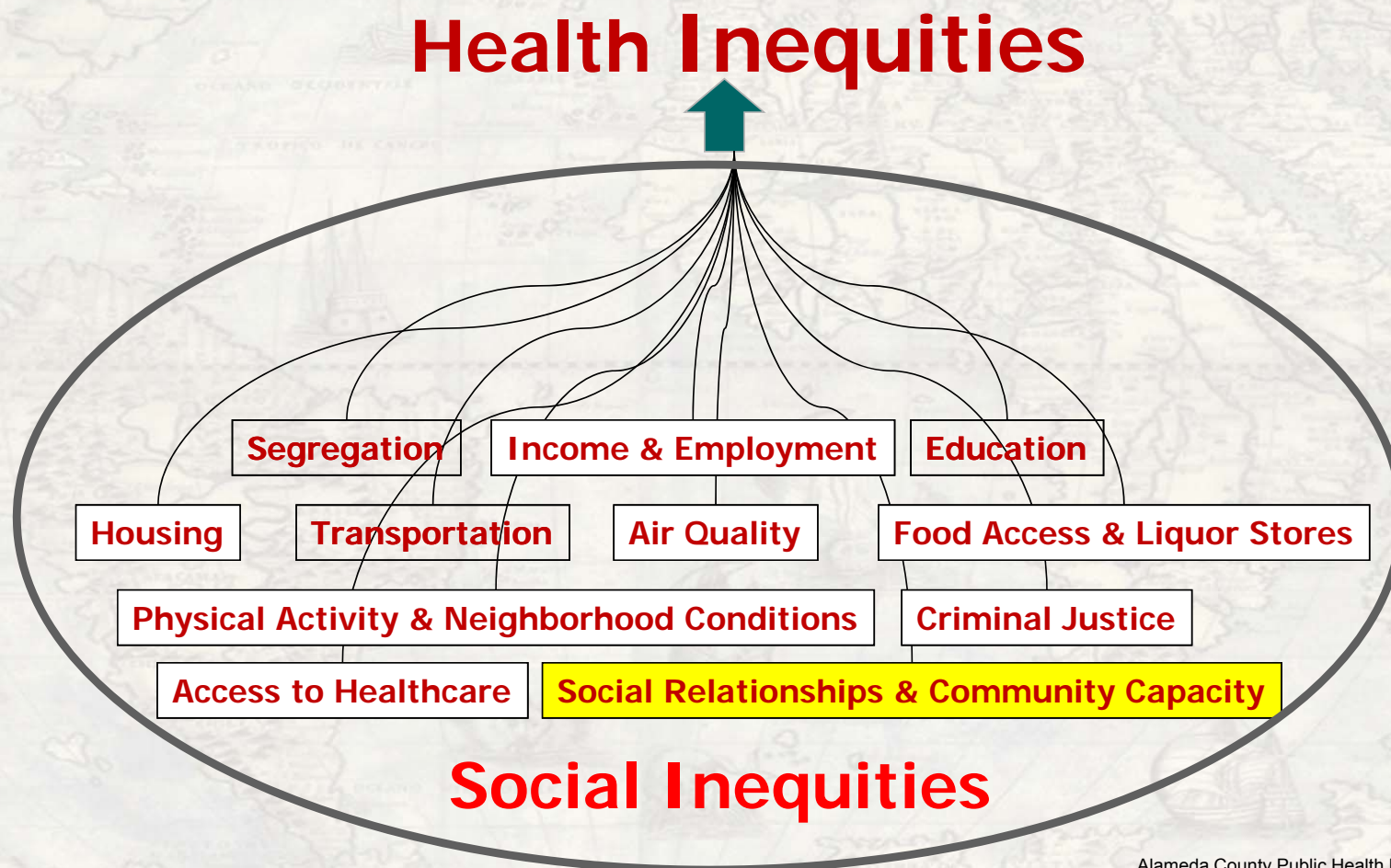
A historical map of the world, likely a 17th-century edition of Willem Blaeuw's world map, serves as the background. The map is rendered in a muted, aged color palette of browns, yellows, and greys. It features a grid of latitude and longitude lines, with various geographical features and sea monsters depicted. A dark grey horizontal banner is positioned at the top of the image, containing the text 'Thank you!'.

Thank you!

**Anthony Olivieri**  
Anthony@FHEED.com

[www.TouchBroward.org](http://www.TouchBroward.org)

# The Root Causes of Health Inequities





# Bike Safety and Awareness

Presented by:

**Richard Cahlin**

Bicycle Action Committee



# High Visibility Enforcement Campaign: Targeting Jaywalkers

Presented by:

**Sgt. Brandi DelVecchio and Officer David Morales**  
City of Coconut Creek Police Department



# MEMBER UPDATES



# MEMBER UPDATES

- TOUCH Healthy Community Zone Workshop
- Emphasizing Healthy and Equity through Tactical Urbanism and Placemaking Strategies
- May 11 2017 – 8:30 am to 11:00 am
- Urban League of Broward County

## HEALTHY COMMUNITY ZONES

Join us for our May 11, 2017 Gathering!



### Emphasizing Health and Equity through Tactical Urbanism and Placemaking Strategies

**WHO:**

All Healthy Community Zone (HCZ) partners and stakeholders who are working collaboratively and collectively toward a healthier Broward in Broward Municipal Services District, Dania Beach, Hallandale Beach Fort Lauderdale's Sistrunk Corridor, and Lauderdale Lakes.

**WHAT:**

Join us for a HCZ workshop and gain a deeper understanding of how tactical urbanism and place-making strategies can advance the health and equity goals of each zone. The meeting will also yield a series of potential projects per HCZ.

**WHEN:**

**Thursday, May 11, 2017, 8:30 to 11:00 am**  
8:30 to 9:00 am: Registration, light refreshments and networking  
9:00 to 11:00 am: Workshop

**WHERE:**

The Urban League of Broward County  
560 NW 27th Ave, Fort Lauderdale, FL. 33311



**HOW:**

Please RSVP at: [www.touchbroward.org/hcz/GatheringRSVP](http://www.touchbroward.org/hcz/GatheringRSVP)  
by email at: [info@urbanhs.com](mailto:info@urbanhs.com), or via phone at: 786-224-2309.



This publication was supported by the Cooperative Agreement Number: 1U58DP005790-02 funded by the Centers for Disease Control and Prevention (CDC). Its contents are solely the responsibility of the authors and do not necessarily represent the official views of the CDC or the Department of Health and Human Services.

# THANK YOU!

- Any Final Questions?
- Next CSAC Meeting – July 10, 2017
- Don't Forget to Visit the Complete Streets webpage at:  
[www.browardmpo.org/projects-studies/complete-streets](http://www.browardmpo.org/projects-studies/complete-streets)
- If you have any questions or comments, please contact Ricardo Gutierrez at 954.876.0044

